

Operating Instructions • Warning Information
• Parts Breakdown



! WARNING



ALWAYS READ INSTRUCTIONS BEFORE USING POWER TOOLS



ALWAYS WEAR SAFETY GOGGLES



ALWAYS WEAR HEARING PROTECTION



AVOID PROLONGED EXPOSURE TO VIBRATION

! WARNING

Some dust created by power sanding, sawing, grinding, drilling, and other construction activities contains chemicals known to cause cancer, birth defects or other reproductive harm. Some examples of these chemicals are:

- lead from lead-based paints,
- crystalline silica from bricks and cement and other masonry products, and
- arsenic and chromium from chemically-treated lumber.

Your risk from these exposures varies, depending on how often you do this type of work. To reduce your exposure to these chemicals: work in a well ventilated area, and work with approved safety equipment, such as those dust masks that are specially designed to filter out microscopic particles.

SPECIFICATIONS

Free Speed	190 RPM
Maximum Torque	90 ft. lbs.
Air Consumption	4 CFM
Air Inlet	1/4" NPT
Recommended Hose Size	3/8" I.D.
Recommended Air Pressure	90 psig
Length	10.83"
Net Weight	2.82 lbs.
Sound Pressure Level.	99 dbA

CAT5500HD
3/8" Air Ratchet

WARNING

FAILURE TO OBSERVE THESE WARNINGS COULD RESULT IN INJURY.

THIS INSTRUCTION MANUAL CONTAINS IMPORTANT SAFETY INFORMATION.

READ THIS INSTRUCTION MANUAL CAREFULLY AND UNDERSTAND ALL INFORMATION BEFORE OPERATING THIS TOOL.



- It is the responsibility of the owner to make sure all personnel read this manual prior to using the device. It is also the responsibility of the device owner to keep this manual intact and in a convenient location for all to see and read. If the manual or product labels are lost or not legible, contact Cornwell for replacements. If the operator is not fluent in English, the product and safety instructions shall be read and discussed with the operator in the operator's native language by the purchaser/owner or his designee, making sure that the operator comprehends its contents.

- Always operate, inspect and maintain this tool in accordance with American National Standards Institute Safety Code of Portable Air Tools (ANSI B186.1) and any other applicable safety codes and regulations.
- For safety, top performance and maximum durability of parts, operate this tool at 90 psig: 6.2 bar max air pressure with 3/8" diameter air supply hose.
- Always wear impact-resistant eye and face protection when operating or performing maintenance on this tool (users and bystanders). Always wear hearing protection when using this tool.
- High sound levels can cause permanent hearing loss. Use hearing protection (users and bystanders) as recommended by your employer or OSHA regulation.
- Keep the tool in efficient operating condition.
- Operators and maintenance personnel must be physically able to handle the bulk, weight and power of this tool.
- Keep tool out of reach of children.

- Air under pressure can cause severe injury. Never direct air at yourself or others. Always turn off the air supply, drain hose of air pressure and detach tool from air supply before installing, removing or adjusting any accessory on this tool, or before performing any maintenance on this tool. Failure to do so could result in injury. Whip hoses can cause serious injury. Always check for damaged, frayed or loose hoses and fittings, and replace immediately.
- Do not operate a damaged or worn tool. Do not use quick detach couplings at tool. See instructions for correct set-up.

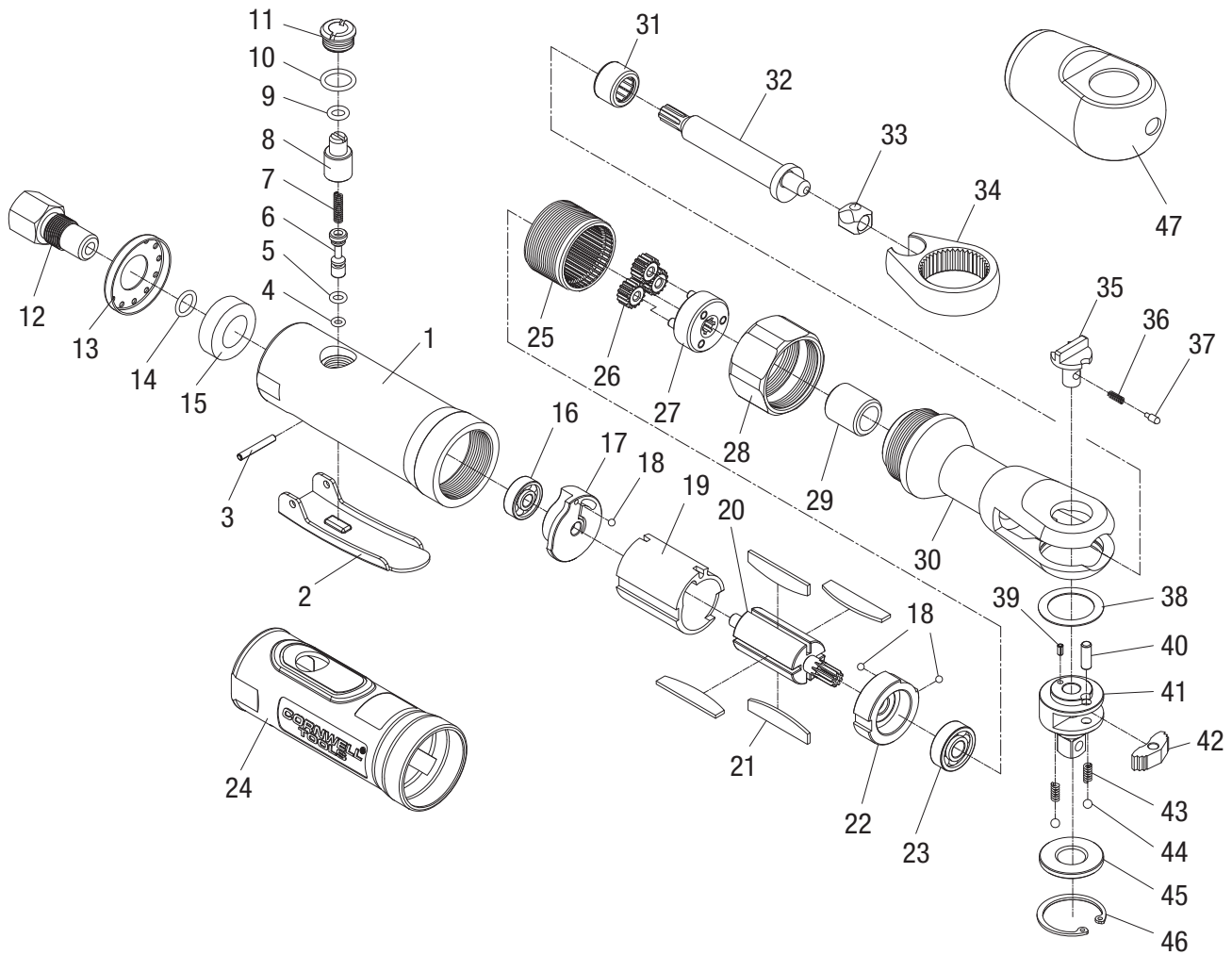
- Air powered tools can vibrate during use. Vibration, repetitive motions or uncomfortable positions over extended periods of time may be harmful to your

hands and arms. Discontinue use of tool if discomfort, tingling feeling or pain occurs. Seek medical advice before resuming use.

- Place the tool on the work before starting the tool. Do not point or indulge in any horseplay with this tool.
- Slipping, tripping and/or falling while operating air tools can be a major cause of serious injury or death. Be aware of excess hose left on the walking or work surface.
- Keep body working stance balanced and firm. Do not overreach when operating the tool.
- Anticipate and be alert for sudden changes in motion during start up and operation of any power tool.
- Do not carry tool by the hose. Protect the hose from sharp objects and heat.
- Note direction of rotation BEFORE operating this tool.
- Tool shaft may continue to rotate briefly after throttle is released. Avoid direct contact with accessories during and after use. Gloves will reduce the risk of cuts or burns.
- Keep away from rotating end of tool. Do not wear jewelry or loose clothing. Scalping can occur if hair is not kept away from tool and accessories. Choking can occur if neckwear is not kept away from tool and accessories.
- This tool is not insulated against electric shock.
- This tool must not be used in explosive atmospheres.
- Do not lubricate tools with flammable or volatile liquids such as kerosene, diesel or jet fuel.
- Use only impact wrench sockets and accessories on this tool. Do not use hand sockets and accessories.**
- Do not force tool beyond its rated capacity.
- Do not remove any labels. Replace any damaged labels.
- Use replacement parts and accessories recommended by Cornwell Tools.
- Servicing and repairs should only be made by an authorized service center.
- Do not use (or modify) the tool for any other purpose than that for which it was designed without consulting the manufacturer's authorized representative.
- This product may contain chemicals known to the State of California to cause cancer and birth defects or other reproductive harm. *Wash hands thoroughly after handling.*
- Failure to heed these warnings may result in serious or fatal personal injury and/or property damage.

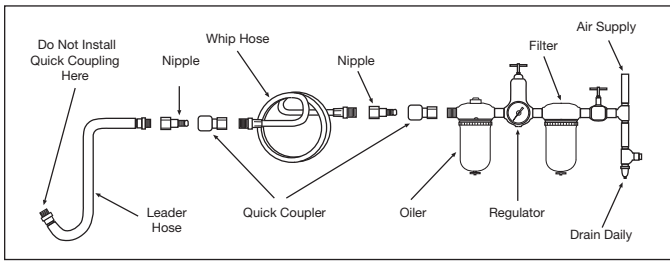


PARTS BREAKDOWN - CAT5500HD



REF. #	ITEM #	DESCRIPTION	QTY.	REF. #	ITEM #	DESCRIPTION	QTY.
1	RS50161	Motor Housing with Bushing	1	26	RS50166	Planet Gear	3
2	RS4000SDR02	Lever	1	27	RS50167	Planet Gear Carrier	1
3	RS706132	Pin	1	28	RS50168	Clamp Nut	1
4	RS305A04	O-Ring (3.5 x 1.5)	1	29	RS50169	Bushing	1
5	RS305A05	O-Ring (4.5 x 1.7)	1	30	RS50170	Ratchet Housing	1
6	RS283506	Throttle Pin	1	31	RS281428	Needle Bearing	1
7	RS305A07	Spring	1	32	RS50171	Crank Shaft	1
8	RS113208	Air Regulator	1	33	RS8000BP29	Drive Bushing	1
9	RS305A09	O-Ring (6 x 2)	1	34	RS50172	Ratchet Yoke	1
10	RS305A10	O-Ring (12 x 2)	1	35	RS50135	Reverse Button	1
11	RS250ARR11	Valve Plug	1	36	RS50136	Spring	1
12	RS50162	Air Inlet	1	37	RS50137	Lock Pin	1
13	RS50113	Muffler	1	38	RS50138	Washer	1
14	RS305A15	O-Ring (9.5 x 1.85)	1	39	RS50139	Roll Pin	1
15	RS50115	Felt	1	40	RS50140	Pin	1
16	RS21114	Ball Bearing (626ZZ)	1	41	RS50173	3/8" Anvil	1
17	RS32318	Rear End Plate	1	42	RS50174	Ratchet Pawl	1
18	RS26216	Steel Ball	3	43	RS50143	Spring	2
19	RS32322	Cylinder	1	44	RS50144	Steel Ball	2
20	RS50163	Rotor	1	45	RS50145	Thrust Washer	1
21	RS50121	Rotor Blade	4	46	RS50146	Retaining Ring	1
22	RS50164	Front End Plate	1	47	RS50150	Head Boot	1
23	RS30524	Ball Bearing (608ZZ)	1		RSCAT5500HDWL	Warning Label (not shown)	1
24	RS50124	Comfort Grip	1		CAT5500HDRHK	Ratchet Head Repair Kit (not shown)	1
25	RS50165	Internal Gear	1				

Operating Instructions • Warning Information • Parts Breakdown



AIR SUPPLY

Tools operate on a wide range of air pressures. It is recommended that air pressure measures 90 psig at the tool with the trigger fully depressed and no load applied to the tool. Higher pressure (over 90 psig; 6.2 bar) raises performance beyond the rated capacity of the tool, which will shorten tool life and could cause injury.

Always use clean, dry air. Dust, corrosive fumes and/or water in the air line will cause damage to the tool. Drain water from air lines and compressor prior to running tool. Clean the air inlet filter screen weekly. The recommended hookup procedure can be viewed in the above figure.

The air inlet used for connecting air supply has standard 1/4" NPT. Line pressure should be increased to compensate for unusually long air hoses (over 25 feet). Minimum hose diameter should be 3/8" I.D. and fittings should have the same inside dimensions and be tightly secured.

Ensure an accessible emergency shut off valve has been installed in the air supply line and make others aware of its location.

OPERATION

This ratchet wrench is rated at 3/8" USS bolt size. Rating must be down graded for spring U bolts, tie bolts, long cap screws, double depth nuts, badly rusted conditions and spring fasteners as they absorb much of the impact power. When possible, clamp or wedge the bolt to prevent springback.

The forward/reversing button is used to change the direction of the tool. When the button is set to the right, the tool will turn in a right hand direction. When the button is set to the left, the tool will turn in a left hand direction.

NOTE: Actual torque on a fastener is directly related to joint hardness, tool speed, condition of socket and the time the tool is allowed to impact.

NOTE: Always shut off air supply, drain hose of air pressure and disconnect tool from air supply when not in use, before changing accessories or when making repairs.

Use the simplest possible tool-to-socket hook up. Every connection absorbs energy and reduces power.

LUBRICATION

Lubricate the air motor daily with high quality air tool oil. If no air line oiler is used, run 1/2 oz. teaspoon of oil through the tool. The oil can be squirted into the tool air inlet or into the hose at the nearest connection to the air supply, then run the tool. A rust inhibitive oil is acceptable for air tools.

WARNING: After an air tool has been lubricated, oil will discharge through the exhaust port during the first few seconds of operation. The exhaust port must be covered with a towel before applying air pressure to prevent serious injury.

WARRANTY

Cornwell Quality Tools Company ("Cornwell") warrants this product against defects in material and workmanship for a period of ONE (1) YEAR from the date of original retail purchase. Subject to the conditions and limitations set forth below, Cornwell will, at its option, either repair or replace any part of the product(s) that proves defective by reason of improper workmanship or materials.

This warranty does not cover any damage to this product that results from accident, abuse, misuse, natural or personal disaster, or any unauthorized disassembly, repair, or modification. Repairs, disassembly and modification are only authorized to be made by Cornwell or a Cornwell Authorized Warranty Center.

WARRANTY SERVICE

In order to have your tool repaired, return the tool to any Cornwell Authorized Warranty Center, freight prepaid. Please include a copy of your proof of purchase and a brief description of the problem. The tool will be inspected and if any part or parts are found to be defective in material or workmanship, they will be repaired free of charge, and the repaired tool will be returned to you freight prepaid.

EXCLUSIONS AND LIMITATIONS

THIS WARRANTY AND THE REMEDIES SET FORTH ABOVE ARE EXCLUSIVE AND IN LIEU OF ALL OTHER WARRANTIES, REMEDIES AND CONDITIONS, WHETHER ORAL OR WRITTEN, EXPRESS OR IMPLIED. CORNWELL SPECIFICALLY DISCLAIMS ANY AND ALL IMPLIED WARRANTIES, INCLUDING, TO THE EXTENT PERMITTED BY APPLICABLE LAW, ANY WARRANTIES OF MERCHANTABILITY AND FITNESS FOR A PARTICULAR PURPOSE. IF CORNWELL CANNOT LAWFULLY DISCLAIM IMPLIED WARRANTIES UNDER THIS LIMITED WARRANTY, ALL SUCH IMPLIED WARRANTIES ARE LIMITED IN DURATION TO THE DURATION OF THIS WARRANTY.

IN NO EVENT SHALL CORNWELL BE LIABLE TO THE PURCHASER OR TO THE USER OF A CORNWELL PRODUCT FOR ANY SPECIAL, INCIDENTAL OR CONSEQUENTIAL DAMAGES BASED UPON BREACH OF WARRANTY, BREACH OF CONTRACT, NEGLIGENCE, TORT, OR ANY OTHER LEGAL THEORY. SUCH DAMAGES INCLUDE, WITHOUT LIMITATION, EXPENSES, LOST REVENUES, LOST SAVINGS, LOST PROFITS, OR ANY OTHER INCIDENTAL OR CONSEQUENTIAL DAMAGES ARISING FROM THE PURCHASE, USE OR INABILITY TO USE THE CORNWELL PRODUCT.

Some states do not allow the exclusion or limitation of incidental or consequential damages or exclusions or limitation on the duration of implied warranties or conditions, so the above limitations or exclusions may not apply to you. This warranty gives you specific legal rights, and you may also have other rights that vary by state.

Repair kits and replacement parts are available for many Cornwell products, regardless of whether or not the product is still covered by a warranty plan.