



!WARNING

Some dust created by power sanding, sawing, grinding, drilling, and other construction activities contains chemicals known to cause cancer, birth defects or other reproductive harm. Some examples of these chemicals are:

- lead from lead-based paints,
- crystalline silica from bricks and cement and other masonry products, and
- arsenic and chromium from chemically-treated lumber.

Your risk from these exposures varies, depending on how often you do this type of work. To reduce your exposure to these chemicals: work in a well ventilated area, and work with approved safety equipment, such as those dust masks that are specially designed to filter out microscopic particles.

!WARNING



**ALWAYS READ
INSTRUCTIONS
BEFORE USING
POWER TOOLS**



**ALWAYS WEAR
SAFETY GOGGLES**



**WEAR HEARING
PROTECTION**



**AVOID
PROLONGED
EXPOSURE TO
VIBRATION**

SPECIFICATIONS

Punch Hole Size.....	5MM
Air Inlet	1/4 NPT
Hose Size	3/8" I.D.
Air Pressure90 PSI
Air Consumption.....	4 CFM
Length	10"
Net Weight	3-1/2 Lbs.

CAT-50PFT

5MM

Punch Flange Tool

WARNING - FOLLOW THESE RULES FOR SAFE OPERATION!



This Instruction Manual Contains Important Safety Information.

Read THIS INSTRUCTION MANUAL Carefully and understand ALL INFORMATION Before Operating This Tool.

- Always operate, inspect and maintain this tool in accordance with American National Standards Institute Safety Code of Portable Air Tools (ANSI B186.1) and any other applicable safety codes and regulations.
- For safety, top performance and maximum durability of parts, operate this tool at 90 psig 6.2 bar max air pressure with 3/8" diameter air supply hose.
- Always wear impact-resistant eye and face protection when operating or performing maintenance on this tool. Always wear hearing protection when using this tool.
- High sound levels can cause permanent hearing loss. Use hearing protection as recommended by your employer or OSHA regulation.
- Keep the tool in efficient operating condition.
- Operators and maintenance personnel must be physically able to handle the bulk, weight and power of this tool.
- Air under pressure can cause severe injury. Never direct air at yourself or others. Always turn off the air supply, drain hose of air pressure and detach tool from air supply before installing, removing or adjusting any accessory on this tool, or before performing maintenance on this tool. Failure to do so could result in injury. Whip hoses can cause serious injury. Always check for damaged, frayed or loose hoses and fittings, and replace immediately. Do not use quick detach couplings at tool. See instructions for correct set-up.



- Air powered tools can vibrate in use. Vibration, repetitive motions or uncomfortable positions over extended periods of time may be harmful to your hands and arms. Discontinue use of tool if discomfort, tingling feeling or pain occurs. Seek medical advice before resuming use.
- Place the tool on the work before starting the tool.
- Slipping, tripping and/or falling while operating air tools can be a major cause of serious injury or death. Be aware of excess hose left on the walking or work surface.
- Keep body working stance balanced and firm. Do not overreach when operating the tool.
- Anticipate and be alert for sudden changes in motion during start up and operation of any power tool.
- Do not carry tool by the hose. Protect the hose from sharp objects and heat.
- Keep away from rotating end of tool. Do not wear jewelry or loose clothing. Secure long hair. Scalping can occur if hair is not kept away from tool and accessories. Choking can occur if neckwear is not kept away from tool and accessories.
- Do not lubricate tools with flammable or volatile liquids such as kerosene, diesel or jet fuel.
- Do not force tool beyond its rated capacity.
- Do not remove any labels. Replace damaged labels.

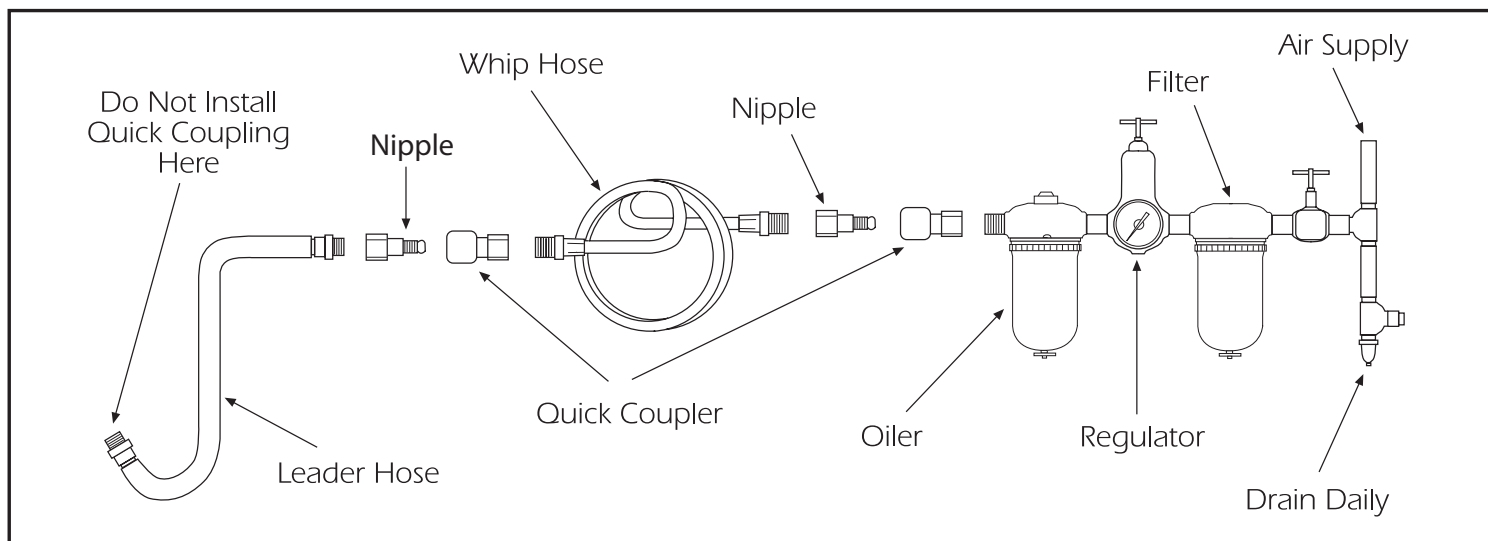


Figure 1

AIR SUPPLY

Tools of this class operate on a wide range of air pressures. It is recommended that air pressure of these tools measures 90 PSI at the tool while running free. Higher pressure and unclean air will shorten the tool's life because of faster wear and may create a hazardous condition.

Water in the air line will cause damage to the tool. Drain the air tank daily. Clean the air inlet filter screen on at least a weekly schedule. The recommended hook-up procedure can be viewed in Figure 1.

The air inlet used for connecting air supply has standard 1/4" NPT American Thread.

Line pressure should be increased to compensate for unusually long air hoses (over 25 feet). Minimum hose diameter should be 3/8" I.D. and fittings should have the same inside dimensions.

LUBRICATION

Lubricate the tool daily with a quality grade of air tool oil. If no air line oiler is used, run a 1/2 oz. of oil through the tool. The oil can be squirted into the tool air inlet or into the hose at the nearest connection to the air supply, then run the tool. A rust inhibitive oil is acceptable for air tools.

WARRANTY

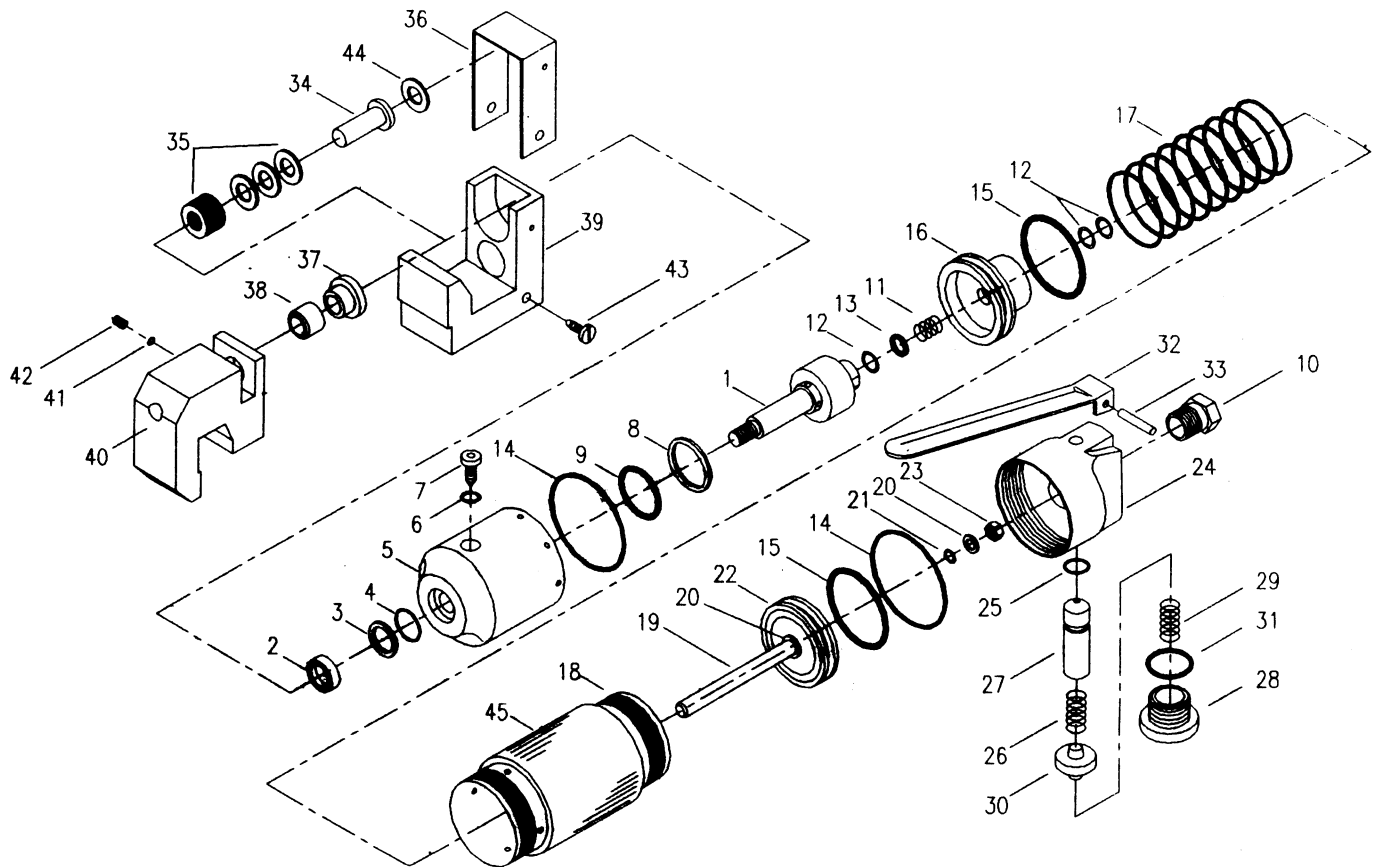
Cornwell warrants its air tools for a period of 1 year to the consumer. We will repair any air tool covered under this warranty which proves to be defective in material or workmanship during the warranty period. In order to have your tool repaired, return the tool to any Cornwell Authorized Warranty Center, freight prepaid. Please include a copy of your proof of purchase and a brief description of the problem. The tool will be inspected and if any part or parts are found to be defective in material or workmanship, they will be repaired free of charge and the repaired tool will be returned to you freight prepaid.

This warranty gives you specific rights. You may also have other rights which vary from state to state.

The foregoing obligation is Cornwell's sole liability under this or any implied warranty and under no circumstances shall Cornwell be liable for any incidental or consequential damages.

Note: Some states do not allow the exclusion or limitation of incidental or consequential damages so the above limitation or exclusion may not apply to you.

PARTS BREAKDOWN - CAT-50PFT



Ref #	Part #	Description	Qty.	Ref #	Part #	Description	Qty.
1	RS83701B	Piston (5mm)	1	24	RS83724	Air Valve Body	1
2	RS83702	Packing	1	25	RS83725	O-Ring	1
3	RS83703	Back-Up Ring	1	26	RS83726	Spring	1
4	RS83704	O-Ring	1	27	RS83727	Air Valve	1
5	RS83705	Cylinder	1	28	RS83728	Plug	1
6	RS83706	O-Ring	1	29	RS83729	Spring	1
7	RS83707	Oil Plug	1	30	RS3730	Valve Cover	1
8	RS83708	Back-Up Ring	1	31	RS83731	O-Ring	1
9	RS83709	O-Ring	1	32	RS83732	Trigger	1
10	RS83710	Air Inlet	1	33	RS83733	Pin	1
11	RS83711	Spring	1	34	RS83734B	Punch	1
12	RS83712	O-Ring	3	35	RS280SS	Cup Spring (set of 12)	1
13	RS83713	Back-Up Ring	1	36	RS83736B	Cover	1
14	RS83714	O-Ring	2	37	RS83737B	Guide Sleeve	1
15	RS83715	O-Ring	2	38	RS83738B	Punching Die	1
16	RS83716	Piston	1	39	RS3739B	Anvil Bed	1
17	RS83717	Spring	1	40	RS83740B	Punching Die Bed	1
18	RS83718	Cylinder	1	41	RS83741	Packing	1
19	RS83719	Piston Rod	1	42	RS83742	Screw	1
20	RS83720	Washer	2	43	RS83743	Screw	2
21	RS83721	O-Ring	1	44	RS83744B	Washer	1
22	RS83722	Piston	1	45	RS83745B	Plastic Wrap - Blue	1
23	RS83723	Lock Nut	1				