



CAT4282

1/2" bluePOWER® IMPACT WRENCH W/2" EXT. ANVIL

OPERATING MANUAL • WARNING INFORMATION • PARTS LIST



⚠ WARNING

Some dust created by power sanding, sawing, grinding, drilling, and other construction activities contains chemicals known to cause cancer, birth defects or other reproductive harm. Some examples of these chemicals are:

- lead from lead-based paints,
- crystalline silica from bricks and cement and other masonry products, and
- arsenic and chromium from chemically-treated lumber.

Your risk from these exposures varies, depending on how often you do this type of work. To reduce your exposure to these chemicals: work in a well ventilated area, and work with approved safety equipment, such as those dust masks that are specially designed to filter out microscopic particles.

SPECIFICATIONS

Tool Width	2.75"
Tool Length	9.06"
Tool Height	8.19"
Tool Weight	4.76 lb
Maximum Free Speed	8,300 RPM
Maximum Reverse Torque	825 ft-lbs
Breakaway Torque	1,350 ft-lbs
Sound Pressure Level	96.8 dBA
Vibration Level	8.84 m/s ²
Air Consumption	4.8 cfm
Recommended Hose Size	3/8" I.D.
Air Inlet Size	1/4" NPT

⚠ WARNING



ALWAYS READ INSTRUCTIONS BEFORE USING POWER TOOLS



ALWAYS WEAR SAFETY GOGGLES



ALWAYS WEAR HEARING PROTECTION



AVOID PROLONGED EXPOSURE TO VIBRATION

FAILURE TO OBSERVE THESE WARNINGS COULD RESULT IN INJURY



THIS INSTRUCTION MANUAL CONTAINS IMPORTANT SAFETY INFORMATION.

READ THIS INSTRUCTION MANUAL CAREFULLY AND UNDERSTAND ALL INFORMATION BEFORE OPERATING THIS TOOL.

- It is the responsibility of the owner to make sure all personnel read this manual prior to using this air tool. It is also the responsibility of the air tool owner to keep this manual intact and in a convenient location for all to see and read. If the manual or product labels are lost or not legible, contact Cornwell for replacements. If the operator is not fluent in English, the product and safety instructions shall be read to and discussed with the operator in the operator's native language by the purchaser/owner or his designee, making sure that the operator comprehends its contents.

- Always operate, inspect and maintain this tool in accordance with American National Standards Institute Safety Code of Portable Air Tools (ANSI B186.1) and any other applicable safety codes and regulations.

- For safety, top performance and maximum durability of parts, operate this tool at 90 psig: 6.2 bar max air pressure with 3/8" diameter air supply hose.

- Always wear impact-resistant eye protection when operating or performing maintenance on this tool (users and bystanders).

- Always wear hearing protection when using this tool (users and bystanders). High sound levels can cause permanent hearing loss. Use hearing protection as recommended by your employer or OSHA regulation.

- Keep the tool in efficient operating condition.

- Operators and maintenance personnel must be physically able to handle the bulk, weight and power of this tool.

- Keep tool out of reach of children.

- Air powered tools can vibrate during use. Vibration, repetitive motions or uncomfortable positions over extended periods of time may be harmful to your hands and arms. Discontinue use of tool if discomfort, tingling feeling or pain occurs. Seek medical advice before resuming use.

- Place the tool on the work before starting the tool. Do not point or indulge in any horseplay with this tool.

- Note direction of rotation BEFORE operating this tool.

- Air under pressure can cause severe injury. Never direct air at yourself or others. Always turn off the air supply, drain hose of air pressure and detach tool from air supply before installing, removing or adjusting any accessory on this tool, or before performing any maintenance on this tool. Failure to do so could result in injury.

- Whip hoses can cause serious injury. Always check for damaged, frayed or loose hoses and fittings, and replace immediately. Do not use quick detach couplings at tool. See instructions for correct set-up on page 3.



- Slipping, tripping and/or falling while operating air tools can be a major cause of serious injury or death. Be aware of excess hose left on the walking or work surface.

- Keep body working stance balanced and firm. Do not overreach when operating the tool.



- Anticipate and be alert for sudden changes in motion during start up and operation of any power tool.

- Do not carry tool by the hose. Protect the hose from sharp objects and heat.



- Note direction of rotation BEFORE operating this tool.

- Tool shaft may continue to rotate briefly after throttle is released. Avoid direct contact with accessories during and after use. Gloves will reduce the risk of cuts or burns.

- Keep away from rotating end of tool. Do not wear jewelry or loose clothing. Secure long hair. Scalping can occur if hair is not kept away from tool and accessories. Choking can occur if neckwear is not kept away from tool and accessories.

- Impact wrenches are not torque control devices. Fasteners with specific torque requirements must be checked with suitable torque measuring devices after installation with an impact wrench.



- This tool is not insulated against electric shock.

- This tool must not be used in explosive atmospheres.



- Do not lubricate tools with flammable or volatile liquids such as kerosene, diesel or jet fuel.



- Do not force tool beyond its rated capacity.

- **Use only impact sockets and accessories on this tool. Do not use hand sockets or accessories.**

- **Use accessories recommended by Cornwell Tools.**

- Do not use (or modify) the tool for any other purpose than that for which it was designed without consulting the manufacturer's authorized representative.

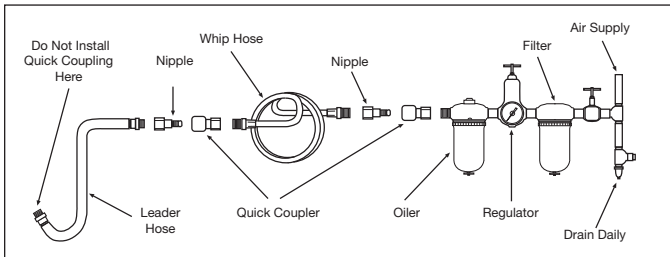
- Do not remove any labels. Replace any damaged labels.

- Failure to heed these warnings may result in serious or fatal personal injury and/or property damage.



WARNING: This product can expose you to chemicals including phthalates, which is known to the State of California to cause cancer and birth defects or other reproductive harm. For more information go to www.P65Warnings.ca.gov.





AIR SUPPLY

Tools operate on a wide range of air pressures. It is recommended that air pressure measures 90 psig at the tool with the trigger fully depressed and no load applied to the tool. Higher pressure (over 90 psig; 6.2 bar) raises performance beyond the rated capacity of the tool, which will shorten tool life and could cause injury.

Always use clean, dry air. Dust, corrosive fumes and/or water in the air line will cause damage to the tool. Drain water from air lines and compressor prior to running tool. Clean the air inlet filter screen weekly. The recommended hookup procedure can be viewed in the above figure.

The air inlet used for connecting air supply has standard 1/4" NPT. Line pressure should be increased to compensate for unusually long air hoses (over 25 feet). Minimum hose diameter should be 3/8" I.D. and fittings should have the same inside dimensions and be tightly secured.

Ensure an accessible emergency shut off valve has been installed in the air supply line and make others aware of its location.

LUBRICATION

Lubricate the air motor daily with high quality air tool oil. If no air line oiler is used, run 1/2 oz. of oil through the tool. The oil can be squirted into the tool air inlet or into the hose at the nearest connection to the air supply, then run the tool. A rust inhibitive oil is acceptable for air tools.

WARNING: After an air tool has been lubricated, oil will discharge through the exhaust port during the first few seconds of operation. The exhaust port must be covered with a towel before applying air pressure to prevent serious injury.

OPERATION

This tool is an impacting tool and not a torque meter. When specific torque is required, it must be checked with a torque meter after fitting the fastener with the impact. This impact wrench is rated at 1/2" SAE bolt size. Rating must be downgraded for spring U bolts, tie bolts, long cap screws, double depth nuts, badly rusted conditions and spring fastener, as they absorb much of the impact power. When possible, clamp or wedge the bolt to prevent spring back.

Soak rusted nuts in penetrating oil and break rust seal before removing with impact wrench. If nut does not start to move in three to five seconds, use a larger size impact wrench. Do not use impact wrench beyond rated capacity as this will drastically reduce tool life.

The reversing valve is used to change the direction of the tool. When the valve is out, the tool is in forward or right hand direction. When the valve is pushed in, the tool is in reverse or left hand direction.

NOTE: Always turn off the air supply, drain hose of air pressure and detach tool from air supply before installing, removing or adjusting any accessory on this tool, or before performing any maintenance on this tool.

NOTE: Actual torque on a fastener is directly related to joint hardness, tool speed, condition of socket and the time the tool is allowed to impact. Use the simplest possible tool to socket hook up. Every condition absorbs energy and reduces power.

NOTE: During operation, safety goggles must always be worn to guard against flying debris (users and bystanders).

TROUBLESHOOTING

Other factors outside the tool may cause loss of power or erratic action. Reduced compressor output, excessive drain on the air line, moisture or restrictions in air pipes or the use of hose connections of improper size or poor conditions may reduce air supply. Grit or gum deposits in the tool may cut power and may be corrected by cleaning the air strainer and flushing out the tool with gum solvent oil or an equal mixture of SAE #10 and kerosene. If outside conditions are in order, disconnect tool from hose and take tool to your nearest authorized service center.



WARRANTY COVERAGE

Cornwell Quality Tools Company ("Cornwell") warrants this product against defects in material and workmanship for a period of TWO (2) YEARS from the date of original retail purchase. Subject to the conditions and limitations set forth below, Cornwell will, at its option, either repair or replace any part of the product(s) that proves defective by reason of improper workmanship or materials.

This warranty does not cover any damage to this product that results from accident, abuse, misuse, natural or personal disaster, or any unauthorized disassembly, repair, or modification. Repairs, disassembly and modification are only authorized to be made by Cornwell or a Cornwell Authorized Warranty Center.

WARRANTY SERVICE

In order to have your tool repaired, return the tool to any Cornwell Authorized Warranty Center, freight prepaid. Please include a copy of your proof of purchase and a brief description of the problem. The tool will be inspected and if any part or parts are found to be defective in material or workmanship, they will be repaired free of charge, and the repaired tool will be returned to you freight prepaid.

EXCLUSIONS AND LIMITATIONS

THIS WARRANTY AND THE REMEDIES SET FORTH ABOVE ARE EXCLUSIVE AND IN LIEU OF ALL OTHER WARRANTIES, REMEDIES AND CONDITIONS, WHETHER ORAL OR WRITTEN, EXPRESS OR IMPLIED. CORNWELL SPECIFICALLY DISCLAIMS ANY AND ALL IMPLIED WARRANTIES, INCLUDING, TO THE EXTENT PERMITTED BY APPLICABLE LAW, ANY WARRANTIES OF MERCHANTABILITY AND FITNESS FOR A PARTICULAR PURPOSE. IF CORNWELL CANNOT LAWFULLY DISCLAIM IMPLIED WARRANTIES UNDER THIS LIMITED WARRANTY, ALL SUCH IMPLIED WARRANTIES ARE LIMITED IN DURATION TO THE DURATION OF THIS WARRANTY.

IN NO EVENT SHALL CORNWELL BE LIABLE TO THE PURCHASER OR TO THE USER OF A CORNWELL PRODUCT FOR ANY SPECIAL, INCIDENTAL OR CONSEQUENTIAL DAMAGES BASED UPON BREACH OF WARRANTY, BREACH OF CONTRACT, NEGLIGENCE, TORT, OR ANY OTHER LEGAL THEORY. SUCH DAMAGES INCLUDE, WITHOUT LIMITATION, EXPENSES, LOST REVENUES, LOST SAVINGS, LOST PROFITS, OR ANY OTHER INCIDENTAL OR CONSEQUENTIAL DAMAGES ARISING FROM THE PURCHASE, USE OR INABILITY TO USE THE CORNWELL PRODUCT.

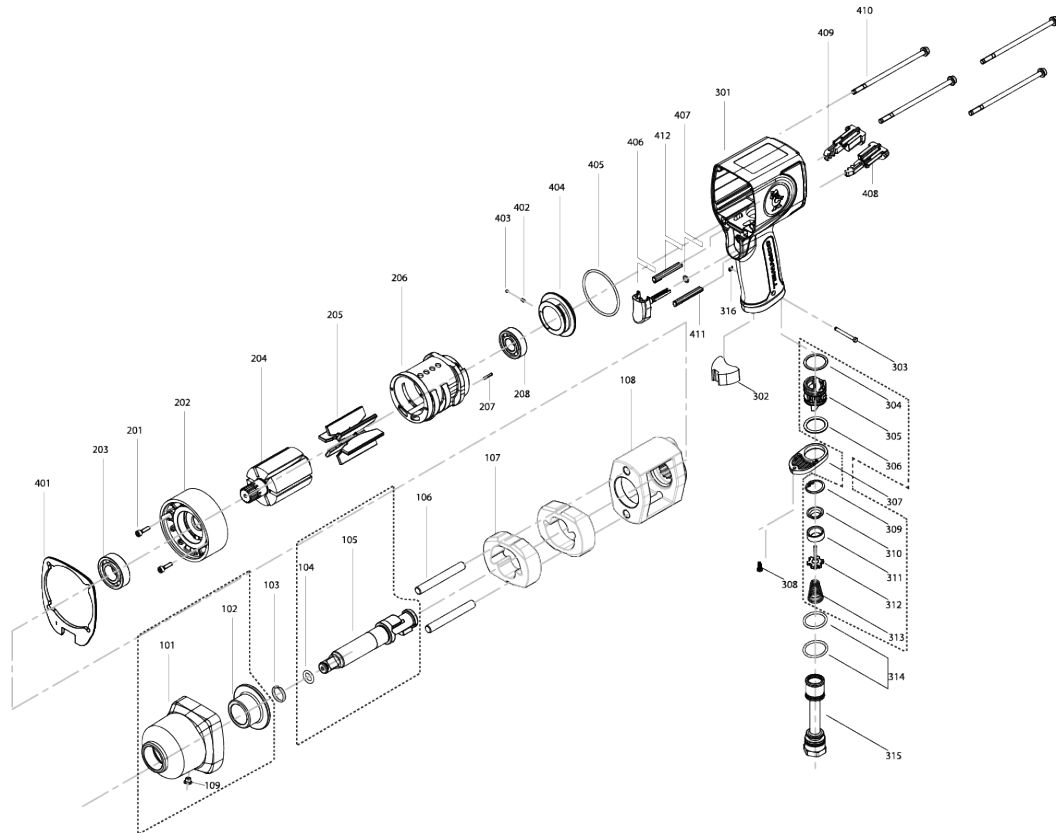
Some states do not allow the exclusion or limitation of incidental or consequential damages or exclusions or limitation on the duration of implied warranties or conditions, so the above limitations or exclusions may not apply to you. This warranty gives you specific legal rights, and you may also have other rights that vary by state.

Repair kits and replacement parts are available for many Cornwell products, regardless of whether or not the product is still covered by a warranty plan.

Cornwell Quality Tools Company
667 Seville Road • Wadsworth, OH 44281-1094



PARTS LIST



Item	Part No	Parts Description	Qty
101	RS428201	HAMMER CASE ASS'Y. (incl. 102 & 109)	1
102	RS428202	ANVIL BUSHING (incl. with 101)	1
103	RS428203	SOCKET RETAINER (incl. with 105)	1
104	RS428204	O-RING (7x2) (incl. with 105)	1
105	RS428205	2" ANVIL ASSEMBLY (incl. 103 and 104)	1
106	RS428206	HAMMER PIN (2 Pack)	1
107	RS428207	HAMMER (2 Pack)	1
108	RS428208	HAMMER FRAME	1
109	RS223809	GREASE FITTING (6x6Lx1.8) (incl. w/101)	1
201	RS428209	SCREW (M3x12)	2
202	RS428210	FRONT END PLATE	1
203	RS428211	BALL BEARING (6002ZZ)	1
204	RS428212	ROTOR	1
205	RS428213	ROTOR BLADE (6 Pack)	1
206	RS428214	CYLINDER ASSEMBLY	1
207	RS223812	SPRING PIN (2.5x8)	1
208	RS322515	BALL BEARING (6001ZZ)	1
301	RS428215C	HOUSING ASSEMBLY	1
302	RS428216	MUFFLER	1
303	RS223820	PIN (2.6mm)	1
304	*	O-RING (16.18x2.53)	1
305	*	REVERSE VALVE	1
306	*	O-RING (17.8x1.9)	1
307	RS223824	EXHAUST DEFLECTOR	1
308	RS223825	SCREW (M3x8L)	1

Item	Part No	Parts Description	Qty
309	* RS223826	C-RING (RTW#16)	1
310	*	STEM SEAL	1
311	*	STEM BUSHING	1
312	*	VALVE STEM	1
313	* RS223830	SPRING (14x8x20L)	1
314	RS223831	O-RING (17x2)	2
315	RS428218	AIR INLET	1
316	RS223833	E-RING (2.5)	1
401	RS428219	GASKET	1
402	RS223835	SPRING (2.5x5.2L)	1
403	RS223836	STEEL BALL (2.5MM)	1
404	RS223837	REGULATOR	1
405	RS223838	O-RING (42x2)	1
406	RS223839	TRIGGER	1
407	RS223840	O-RING (3.5x1.6)	1
408	RS428220	REVERSE BUTTON	1
409	RS428221	FORWARD BUTTON	1
410	RS428222	NYLOK SCREW (M4x90)	4
411	RS223844	SUPPORT BAR LEFT	1
412	RS223845	SUPPORT BAR RIGHT	1

* RSCAT4282WL PRODUCT WARNING LABEL
 * RS223846 THROTTLE REVERSE VALVE ASSEMBLY
 (Incl. 304, 305, 306, 309, 310, 311, 312, 313)