

SPECIFICATIONS

Breakaway Torque: 1,100 Ft./Lbs.
Maximum Applied Torque: 800 Ft./Lbs.
Working Torque Range: 50 - 550 Ft./Lbs.
Free Speed: 7,500 RPM
Avg. Air Consumption: 4.9 cfm
Overall Length: 8-7/8"
Weight: 4.3 lbs.
Sound Level: 97.3 dBA
Air Inlet (NPT): 1/4"
Recommended Hose Size: 3/8"



⚠ WARNING

**RATED RPM OF THE ACCESSORY
USED MUST EXCEED THE MAXIMUM
TOOL RPM SHOWN**



**ALWAYS READ
INSTRUCTIONS BEFORE
USING POWER TOOLS**



**ALWAYS WEAR
SAFETY GOGGLES**



**WEAR HEARING
PROTECTION**



**AVOID PROLONGED
EXPOSURE TO VIBRATION**



⚠ WARNING

Some dust created by power sanding, sawing, grinding, drilling, and other construction activities contains chemicals known to cause cancer, birth defects or other reproductive harm. Some examples of these chemicals are:

- lead from lead-based paints,
- crystalline silica from bricks and cement and other masonry products, and
- arsenic and chromium from chemically-treated lumber.

Your risk from these exposures varies, depending on how often you do this type of work. To reduce your exposure to these chemicals: work in a well ventilated area, and work with approved safety equipment, such as those dust masks that are specially designed to filter out microscopic particles.

CAT4152

Blue Power 1/2" Dr. Impact Wrench w/ 2" Anvil

Copyright © Professional Tool Products, 2011
All rights reserved

WARNING

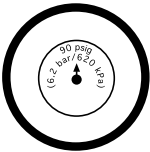
FAILURE TO OBSERVE THESE WARNINGS COULD RESULT IN INJURY.



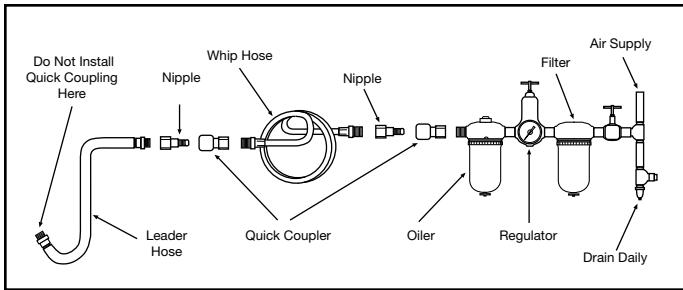
THIS INSTRUCTION MANUAL CONTAINS IMPORTANT SAFETY INFORMATION.

READ THIS INSTRUCTION MANUAL CAREFULLY AND UNDERSTAND ALL INFORMATION **BEFORE** OPERATING THIS TOOL.

- Always operate, inspect and maintain this tool in accordance with American National Standards Institute Safety Code of Portable Air Tools (ANSI B186.1) and any other applicable safety codes and regulations.
- For safety, top performance and maximum durability of parts, operate this tool at 90 psig 6.2 bar max air pressure with 3/8" diameter air supply hose.
- Always wear impact-resistant eye and face protection when operating or performing maintenance on this tool. Always wear hearing protection when using this tool.
- High sound levels can cause permanent hearing loss. Use hearing protection as recommended by your employer or OSHA regulation.
- Keep the tool in efficient operating condition.
- Operators and maintenance personnel must be physically able to handle the bulk, weight and power of this tool.
- Air under pressure can cause severe injury. Never direct air at yourself or others. Always turn off the air supply, drain hose of air pressure and detach tool from air supply before installing, removing or adjusting any accessory on this tool, or before performing any maintenance on this tool. Failure to do so could result in injury. Whip hoses can cause serious injury. Always check for damaged, frayed or loose hoses and fittings, and replace immediately. Do not use quick detach couplings at tool. See instructions for correct set-up.
- Air powered tools can vibrate in use. Vibration, repetitive motions or uncomfortable positions over extended periods of time may be harmful to your hands and arms. Discontinue use of tool if discomfort, tingling feeling or pain occurs. Seek medical advice before resuming use.



- Place the tool on the work before starting the tool.
- Slipping, tripping and/or falling while operating air tools can be a major cause of serious injury or death. Be aware of excess hose left on the walking or work surface.
- Keep body working stance balanced and firm. Do not overreach when operating the tool.
- Anticipate and be alert for sudden changes in motion during start up and operation of any power tool.
- Do not carry tool by the hose. Protect the hose from sharp objects and heat.
- Tool shaft may continue to rotate briefly after throttle is released. Avoid direct contact with accessories during and after use. Gloves will reduce the risk of cuts or burns.
- Keep away from rotating end of tool. Do not wear jewelry or loose clothing. Scalping can occur if hair is not kept away from tool and accessories. Choking can occur if neckwear is not kept away from tool and accessories.
- Impact wrenches are not torque control devices. Fasteners with specific torque requirements must be checked with suitable torque measuring devices after installation with an impact wrench.
- Use only impact wrench sockets and accessories on this tool. Do not use hand sockets and accessories.
- Do not lubricate tools with flammable or volatile liquids such as kerosene, diesel or jet fuel.
- Do not force tool beyond its rated capacity.
- Do not remove any labels. Replace any damaged labels.



AIR SUPPLY

Tools of this class operate on a wide range of air pressures. It is recommended that air pressure of these tools measures 90 PSI at the tool while running free. Higher pressure (over 90 psig; 6.2 bar) raises performance beyond the rated capacity of the tool which will shorten tool life because of faster wear and could cause injury.

Always use clean, dry air. Dust, corrosive fumes and/or water in the air line will cause damage to the tool. Drain the air tank daily. Clean the air inlet filter screen on at least a weekly schedule. The recommended hookup procedure can be viewed in the above figure.

The air inlet used for connecting air supply, has standard 1/4" NPT. Line pressure should be increased to compensate for unusually long air hoses (over 25 feet). Minimum hose diameter should be 3/8" I.D. and fittings should have the same inside dimensions and be tightly secured.

LUBRICATION

Lubricate the tool daily with quality air tool oil. If no air line oiler is used, run a half ounce of oil through the tool. The oil can be squirted into the tool air inlet or into the hose at the nearest connection to the air supply, then run the tool. Overfilling will cause a reduction in the power of the tool. A rust inhibitive oil is acceptable for air tools.

OPERATION

The air regulator can be used to adjust torque to the approximate tightness of a known fastener. To set the tool to desired torque, select a nut or screw of known tightness of the same size, thread pitch and thread condition as those on the job. Turn air regulator to low position, apply wrench to nut and gradually increase power (turn regulator to admit more air) until nut moves slightly in the direction it was originally set. The tool is now set to duplicate that tightness - Note regulator setting for future use. When tightening nuts not requiring critical torque values, run nut up flush and then tighten an additional one-quarter to one-half turn (slight additional turning is necessary if gaskets are being clamped). For additional power needed on disassembly work, turn regulator to its fully open position. This impact wrench is rated at 1/2" SAE bolt size. Rating must be down graded for spring U bolts, tie bolts, long cap screws, double depth nuts, badly rusted conditions and spring fasteners as they absorb much of the impact power. When possible, clamp or wedge the bolt to prevent springback.

Soak rusted nuts in penetrating oil and break rust seal before removing with impact wrench. If nut does not start to move in three to five seconds use a larger size impact wrench. Do not use impact wrench beyond rated capacity as this will drastically reduce tool life.

The reversing valve is used to change the rotation of the tool. When the valve is out, the tool is in a forward or right hand rotation. When the valve is pushed in, the rotation is reverse or left hand.

NOTE: Actual torque on a fastener is directly related to joint hardness, tool speed, condition of socket and the time the tool is allowed to impact.

Use the simplest possible tool-to-socket hook up. Every connection absorbs energy and reduces power.

WARRANTY COVERAGE

Cornwell Quality Tools Company ("Cornwell") warrants this product against defects in material and workmanship for a period of TWO (2) YEARS from the date of original retail purchase. Subject to the conditions and limitations set forth below, Cornwell will, at its option, either repair or replace any part of the product(s) that proves defective by reason of improper workmanship or materials.

This warranty does not cover any damage to this product that results from accident, abuse, misuse, natural or personal disaster, or any unauthorized disassembly, repair, or modification. Repairs, disassembly and modification are only authorized to be made by Cornwell or a Cornwell Authorized Warranty Center.

WARRANTY SERVICE

In order to have your tool repaired, return the tool to any Cornwell Authorized Warranty Center, freight prepaid. Please include a copy of your proof of purchase and a brief description of the problem. The tool will be inspected and if any part or parts are found to be defective in material or workmanship, they will be repaired free of charge, and the repaired tool will be returned to you freight prepaid.

EXCLUSIONS AND LIMITATIONS

THIS WARRANTY AND THE REMEDIES SET FORTH ABOVE ARE EXCLUSIVE AND IN LIEU OF ALL OTHER WARRANTIES, REMEDIES AND CONDITIONS, WHETHER ORAL OR WRITTEN, EXPRESS OR IMPLIED. CORNWELL SPECIFICALLY DISCLAIMS ANY AND ALL IMPLIED WARRANTIES, INCLUDING, TO THE EXTENT PERMITTED BY APPLICABLE LAW, ANY WARRANTIES OF MERCHANTABILITY AND FITNESS FOR A PARTICULAR PURPOSE. IF CORNWELL CANNOT LAWFULLY DISCLAIM IMPLIED WARRANTIES UNDER THIS LIMITED WARRANTY, ALL SUCH IMPLIED WARRANTIES ARE LIMITED IN DURATION TO THE DURATION OF THIS WARRANTY.

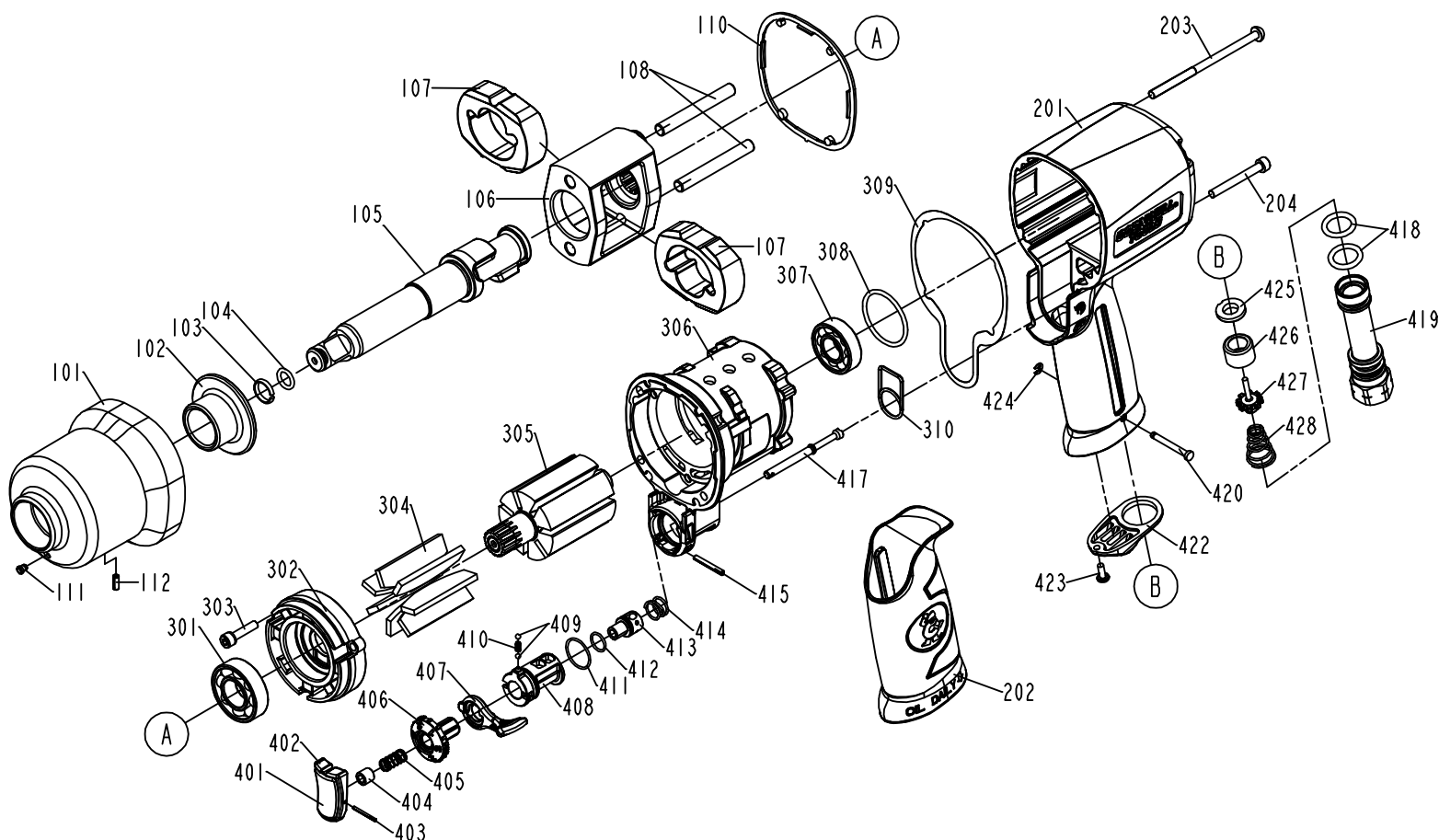
IN NO EVENT SHALL CORNWELL BE LIABLE TO THE PURCHASER OR TO THE USER OF A CORNWELL PRODUCT FOR ANY SPECIAL, INCIDENTAL OR CONSEQUENTIAL DAMAGES BASED UPON BREACH OF WARRANTY, BREACH OF CONTRACT, NEGLIGENCE, TORT, OR ANY OTHER LEGAL THEORY. SUCH DAMAGES INCLUDE, WITHOUT LIMITATION, EXPENSES, LOST REVENUES, LOST SAVINGS, LOST PROFITS, OR ANY OTHER INCIDENTAL OR CONSEQUENTIAL DAMAGES ARISING FROM THE PURCHASE, USE OR INABILITY TO USE THE CORNWELL PRODUCT.

Some states do not allow the exclusion or limitation of incidental or consequential damages or exclusions or limitation on the duration of implied warranties or conditions, so the above limitations or exclusions may not apply to you. This warranty gives you specific legal rights, and you may also have other rights that vary by state.

Repair kits and replacement parts are available for many Cornwell products, regardless of whether or not the product is still covered by a warranty plan.

Cornwell Quality Tools Company
667 Seville Road • Wadsworth, OH 44281-1094

PARTS BREAKDOWN - CAT-4152



ITEM	PARTS NO	PARTS NAME	QTY	ITEM	PARTS NO	PARTS NAME	QTY
101	RS4150101	HAMMER CASE	1	401	RS2125401	TRIGGER A	1
102	RS1761103	HAMMER CASE BUSHING	1	402	RS2125423	TRIGGER B	1
103	RS1761104	SOCKET RETAINER	1	403	RS2125402	SPRING PIN	1
104	RS4135104	O-RING	1	404	RS3125403	TRIGGER BUSHING	1
105	RS4152105	2" ANVIL	1	405	RS4150405	PUSHER SPRING	1
106	RS1761109	HAMMER FRAME	1	406	RS2125405	REGULATOR A	1
107	RS1761108	HAMMER	2	407	RS4135407	LEVER	1
108	RS1761107	HAMMER FRAME PIN	2	408	RS2125407	REVERSE VALVE	1
110	RS4135110	PACKING-HAMMER CASE	1	409	RS1735313	BALL	2
111	RS1837220	HAMMER CASE GREASE FITTING	1	410	RS1077410	SPRING	1
112	RS4135112	SPRING PIN	1	411	RS2125415	O-RING	1
201	RS4152201	HOUSING	1	412	RS1734414	O-RING	1
202	RS4150202	HANDLE GRIP	1	413	RS2125411	REGULATOR	1
203	RS4135203	HALF ROUND HD. HEX. BOLT	1	414	RS2125412	SPRING	1
204	RS2125204	HEX. SOC. HD. BOLT	4	415	RS4135415	SPRING PIN	1
301	RS221RA32	BEARING	1	417	RS4150417	TRIGGER TIP	1
302	RS4135302	FRONT BEARING PLATE	1	418	RS1735410	O-RING	2
303	RS4135303	BOLT ASSEMBLY	3	419	RS2125418	AIR INLET	1
304	RS4135304	BLADE	7	420	RS4150420	LATCH PIN	1
305	RS4135305	ROTOR	1	422	RS1735408	EXHAUST DEFLECTOR	1
306	RS4135306	CYLINDER UNIT	1	423	RS1735411	TAP BOLT	1
307	RS227B25	BEARING	1	424	RS4150424	E-RING	1
308	RS4135308	O-RING	1	425	RS1735403	SEAL	1
309	RS4135309	GASKET-CYLINDER	1	426	RS1735404	BUSHING	1
310	RS2125310	PACKING-CYLINDER	1	427	RS1735405	TIP VALVE	1
				428	RS4150428	SPRING	1

(Not Shown) - Tune-up kit, RS4150TK, including: 103, 104, 110, 304(7), 308, 309, 310, 411, 412, 418 (2), and 425.