

**Operating Instructions • Warning Information
• Parts Breakdown**



! WARNING

Some dust created by power sanding, sawing, grinding, drilling, and other construction activities contains chemicals known to cause cancer, birth defects or other reproductive harm. Some examples of these chemicals are:

- lead from lead-based paints,
- crystalline silica from bricks and cement and other masonry products, and
- arsenic and chromium from chemically-treated lumber.

Your risk from these exposures varies, depending on how often you do this type of work. To reduce your exposure to these chemicals: work in a well ventilated area, and work with approved safety equipment, such as those dust masks that are specially designed to filter out microscopic particles.

! WARNING



**ALWAYS READ
INSTRUCTIONS
BEFORE USING
POWER TOOLS**



**ALWAYS WEAR
SAFETY GOGGLES**



**ALWAYS WEAR
HEARING
PROTECTION**



**AVOID PROLONGED
EXPOSURE TO
VIBRATION**

SPECIFICATIONS

Breakaway Torque.....	1,200 Ft./Lbs.
Maximum Applied Torque.....	800 Ft./Lbs.
Working Torque Range50 - 550 Ft./Lbs.
Free Speed.....	7,500 RPM
Air Inlet	1/4" NPT
Minimum Hose Size.....	3/8" I.D.
Average Air Consumption.....	4.9 CFM
Overall Length6-7/8"
Weight4 Lbs
Sound Pressure Level	97.3 dBA

CAT4150 CAT4150G

**Super Duty
1/2" Dr. Composite
Impact Wrench**

Copyright © Professional Tool Products, 2018
All rights reserved

! WARNING

FAILURE TO OBSERVE THESE WARNINGS COULD RESULT IN INJURY.

THIS INSTRUCTION MANUAL CONTAINS IMPORTANT SAFETY INFORMATION.



READ THIS INSTRUCTION MANUAL CAREFULLY AND UNDERSTAND ALL INFORMATION BEFORE OPERATING THIS TOOL.

- It is the responsibility of the owner to make sure all personnel read this manual prior to using this air tool. It is also the responsibility of the air tool owner to keep this manual intact and in a convenient location for all to see and read. If the manual or product labels are lost or not legible, contact Cornwell for replacements. If the operator is not fluent in English, the product and safety instructions shall be read to and discussed with the operator in the operator's native language by the purchaser/owner or his designee, making sure that the operator comprehends its contents.

- Always operate, inspect and maintain this tool in accordance with American National Standards Institute Safety Code of Portable Air Tools (ANSI B186.1) and any other applicable safety codes and regulations.



- For safety, top performance and maximum durability of parts, operate this tool at 90 psig: 6.2 bar max air pressure with 3/8" diameter air supply hose.



- Always wear impact-resistant eye protection when operating or performing maintenance on this tool (users and bystanders).

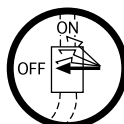


- Always wear hearing protection when using this tool (users and bystanders). High sound levels can cause permanent hearing loss. Use hearing protection as recommended by your employer or OSHA regulation.

- Keep the tool in efficient operating condition.

- Operators and maintenance personnel must be physically able to handle the bulk, weight and power of this tool.

- Keep tool out of reach of children.



- Air under pressure can cause severe injury. Never direct air at yourself or others. Always turn off the air supply, drain hose of air pressure and detach tool from air supply before installing, removing or adjusting any accessory on this tool, or before performing any maintenance on this tool. Failure to do so could result in injury. Whip hoses can cause serious injury. Always check for damaged, frayed or loose hoses and fittings, and replace immediately. Do not use quick detach couplings at tool. See instructions for correct set-up on page 4.



- Air powered tools can vibrate during use. Vibration, repetitive motions or uncomfortable positions over extended periods of time may be harmful to your hands and arms. Discontinue use of tool if discomfort,



CAT4150 / CAT4150G

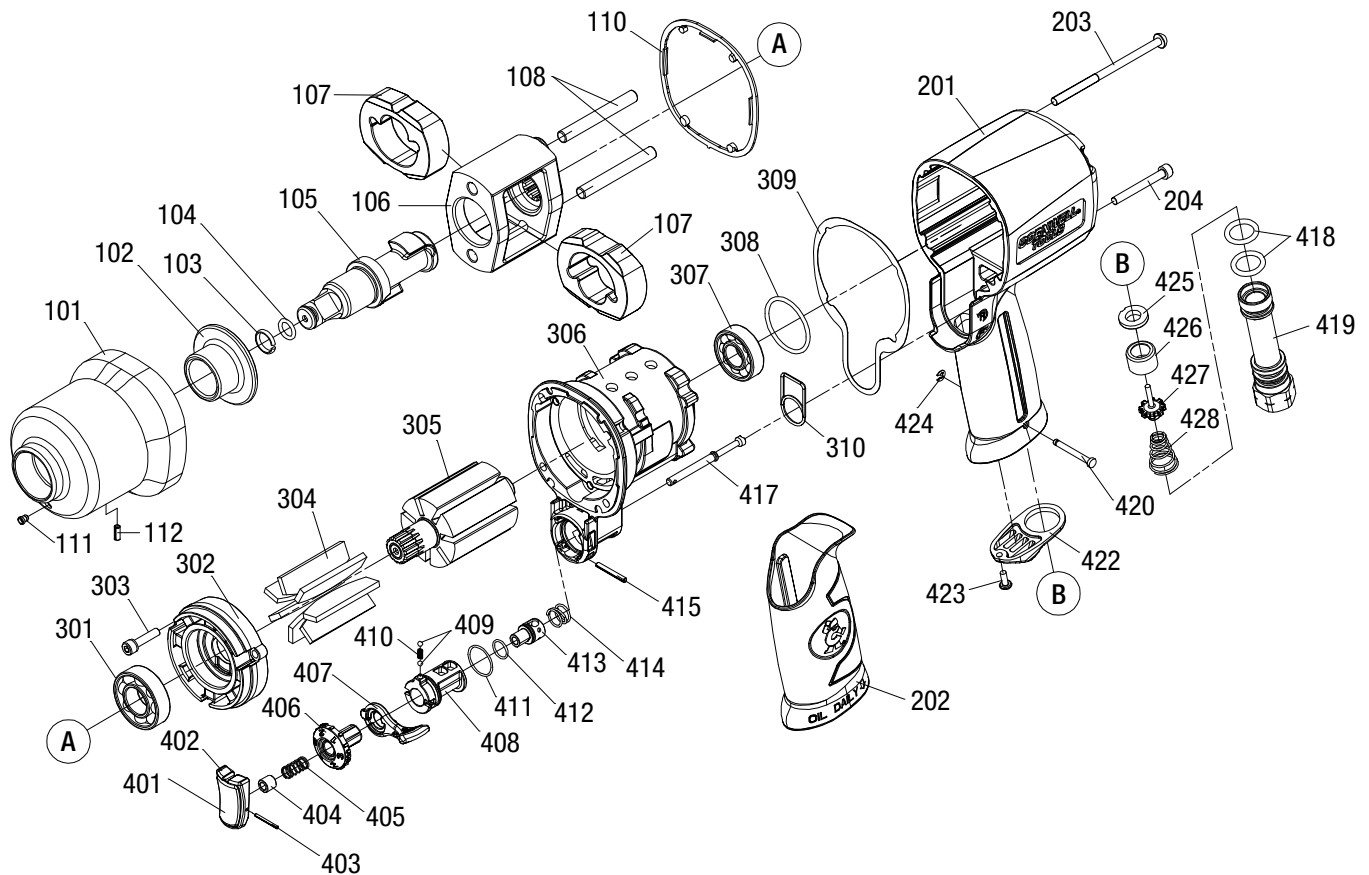


- tingling feeling or pain occurs. Seek medical advice before resuming use.
- Place the tool on the work before starting the tool. Do not point or indulge in any horseplay with this tool.
- Note direction of rotation BEFORE operating this tool.
- Slipping, tripping and/or falling while operating air tools can be a major cause of serious injury or death. Be aware of excess hose left on the walking or work surface.
- Keep body working stance balanced and firm. Do not overreach when operating the tool.
- Anticipate and be alert for sudden changes in motion during start up and operation of any power tool.
- Do not carry tool by the hose. Protect the hose from sharp objects and heat.
- Tool shaft may continue to rotate briefly after throttle is released. Avoid direct contact with accessories during and after use. Gloves will reduce the risk of cuts or burns.
- Keep away from rotating end of tool. Do not wear jewelry or loose clothing. Secure long hair. Scalping can occur if hair is not kept away from tool and accessories. Choking can occur if neckwear is not kept away from tool and accessories.
- Impact wrenches are not torque control devices. Fasteners with specific torque requirements must be checked with suitable torque measuring devices after installation with an impact wrench.
- Do not lubricate tools with flammable or volatile liquids such as kerosene, diesel or jet fuel.
- This tool is not insulated against electric shock.
- This tool must not be used in explosive atmospheres.
- Do not force tool beyond its rated capacity.
- Use only impact sockets or accessories. Do not use hand sockets or accessories.**
- Use accessories recommended by Cornwell Tools.**
- Do not use (or modify) the tool for any other purpose than that for which it was designed without consulting the manufacturer's authorized representative.
- Do not remove any labels. Replace any damaged labels.
- Failure to heed these warnings may result in serious or fatal personal injury and/or property damage.



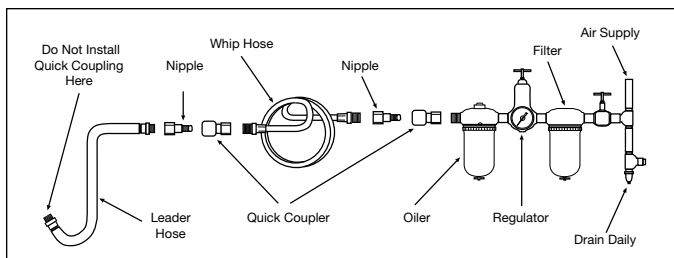
WARNING: This product can expose you to chemicals including nickel, which is known to the State of California to cause cancer and birth defects or other reproductive harm. For more information go to www.P65Warnings.ca.gov.

PARTS BREAKDOWN - CAT4150 / CAT4150G



REF. #	ITEM #	DESCRIPTION	QTY	REF. #	ITEM #	DESCRIPTION	QTY
101	RS4150101	Hammer Case	1	402	RS2125423	Trigger B	1
102	RS1761103	Hammer Case Bushing	1	403	RS2125402	Sprint Pin	1
103	RS1761104	Socket Retainer	1	404	RS3125403	Trigger Bushing	1
104	RS4135104	O-Ring	1	405	RS4150405	Pusher Spring	1
105	RS1761106	Anvil	1	406	RS2125405	Regulator A	1
106	RS1761109	Hammer Frame	1	407	RS4135407	Lever	1
107	RS1761108	Hammer	2	408	RS2125407	Reverse Valve	1
108	RS1761107	Hammer Frame Pin	2	409	RS1735313	Ball (2.5mm)	2
110	RS4135110	Packing-Hammer Case	1	410	RS1077410	Spring	1
111	RS1837220	Hammer Case Grease Fitting	1	411	RS2125415	O-Ring	1
112	RS4135112	Spring Pin	1	412	RS1734414	O-Ring	1
201	RS4150201	Housing - Blue	1	413	RS2125411	Regulator	1
201	RS4150201G	Housing - Green	1	414	RS2125412	Spring	1
202	RS4150202	Handle Grip	1	415	RS4135415	Spring Pin	1
203	RS4135203	Half Round Hd. Hex. Bolt	4	417	RS4150417	Trigger Tip	1
204	RS2125204	Hex. Soc. Hd. Bolt	1	418	RS1735410	O-Ring	2
301	RS221RA32	Bearing (6002ZZ)	1	419	RS2125418	Air Inlet	1
302	RS4135302	Front Bearing Plate	1	420	RS4150420	Latch Pin	1
303	RS4135303	Bolt Assembly	3	422	RS1735408	Exhaust Deflector	1
304	RS4135304	Rotor Blade	7	423	RS1735411	Tap Bolt	1
305	RS4135305	Rotor	1	424	RS4150424	E-Clip	1
306	RS4135306	Cylinder Unit	1	425	RS1735403	Seal	1
307	RS227B25	Bearing (6001ZZ)	1	426	RS1735404	Bushing	1
308	RS4135308	O-Ring	1	427	RS1735405	Tip Valve	1
309	RS4135309	Gasket-Cylinder	1	428	RS4150428	Spring	1
310	RS2125310	Packing-Cylinder	1		RSCAT4150PLK	Product Label Kit for CAT4150	1
401	RS2125401	Trigger A	1		RSCAT4150GPLK	Product Label Kit for CAT4150G	1

(Not Shown) - Tune-up kit, RS4150TK, including: 103, 104, 110, 304 (7), 308, 309, 310, 411, 412, 418 (2), and 425.



AIR SUPPLY

Tools operate on a wide range of air pressures. It is recommended that air pressure of these tools measures 90 psig at the tool with the trigger fully depressed and no load applied to the tool. Higher pressure (over 90 psig; 6.2 bar) raises performance beyond the rated capacity of the tool, which will shorten tool life and could cause injury.

Always use clean, dry air. Dust, corrosive fumes and/or water in the air line will cause damage to the tool. Drain water from air lines and compressor prior to running tool. Clean the air inlet filter screen weekly. The recommended hookup procedure can be viewed in the above figure.

The air inlet used for connecting air supply has standard 1/4" NPT. Line pressure should be increased to compensate for unusually long air hoses (over 25 feet). Minimum hose diameter should be 3/8" I.D. and fittings should have the same inside dimensions and be tightly secured.

Ensure an accessible emergency shut off valve has been installed in the air supply line and make others aware of its location.

LUBRICATION

Lubricate the air motor daily with high quality air tool oil. If no air line oiler is used, run 1/2 oz. of oil through the tool. The oil can be squirted into the tool air inlet or into the hose at the nearest connection to the air supply, then run the tool. A rust inhibitive oil is acceptable for air tools.

WARNING: After an air tool has been lubricated, oil will discharge through the exhaust port during the first few seconds of operation. The exhaust port must be covered with a towel before applying air pressure to prevent serious injury.

OPERATION

Always turn off the air supply, drain hose of air pressure and detach tool from air supply before installing, removing or adjusting any accessory on this tool, or before performing any maintenance on this tool.

This impact wrench is rated at 7/8" SAE bolt size. Rating must be down graded for spring U bolts, tie bolts, long cap screws, double depth nuts, badly rusted conditions and spring fasteners as they absorb much of the impact power. When possible, clamp or wedge the bolt to prevent springback.

Soak rusted nuts in penetrating oil and break rust seal before removing with impact wrench. If nut does not start to move in three to five seconds use a larger size impact wrench. Do not use impact wrench beyond rated capacity as this will drastically reduce tool life.

The reversing valve is used to change the direction of the tool. When the valve is out, the tool is in a forward or right hand direction. When the valve is pushed in, the direction is reverse or left hand.

NOTE: Actual torque on a fastener is directly related to joint hardness, tool speed, condition of socket and the time the tool is allowed to impact. Use the simplest possible tool-to-socket hook up. Every connection absorbs energy and reduces power.

TROUBLESHOOTING

Other factors outside the tool may cause loss of power or erratic action. Reduced compressor output, excessive drain on the air line, moisture or restrictions in air pipes or the use of hose connections of improper size or poor conditions may reduce air supply. Grit or gum deposits in the tool may cut power and may be corrected by cleaning the air strainer and flushing out the tool with gum solvent oil or an equal mixture of SAE #10 and kerosene. If outside conditions are in order, disconnect tool from hose and take tool to your nearest authorized service center.

WARRANTY

Cornwell Quality Tools Company ("Cornwell") warrants this product against defects in material and workmanship for a period of TWO (2) YEARS from the date of original retail purchase. Subject to the conditions and limitations set forth below, Cornwell will, at its option, either repair or replace any part of the product(s) that proves defective by reason of improper workmanship or materials.

This warranty does not cover any damage to this product that results from accident, abuse, misuse, natural or personal disaster, or any unauthorized disassembly, repair, or modification. Repairs, disassembly and modification are only authorized to be made by Cornwell or a Cornwell Authorized Warranty Center.

WARRANTY SERVICE

In order to have your tool repaired, return the tool to any Cornwell Authorized Warranty Center, freight prepaid. Please include a copy of your proof of purchase and a brief description of the problem. The tool will be inspected and if any part or parts are found to be defective in material or workmanship, they will be repaired free of charge, and the repaired tool will be returned to you freight prepaid.

EXCLUSIONS AND LIMITATIONS

THIS WARRANTY AND THE REMEDIES SET FORTH ABOVE ARE EXCLUSIVE AND IN LIEU OF ALL OTHER WARRANTIES, REMEDIES AND CONDITIONS, WHETHER ORAL OR WRITTEN, EXPRESS OR IMPLIED. CORNWELL SPECIFICALLY DISCLAIMS ANY AND ALL IMPLIED WARRANTIES, INCLUDING, TO THE EXTENT PERMITTED BY APPLICABLE LAW, ANY WARRANTIES OF MERCHANTABILITY AND FITNESS FOR A PARTICULAR PURPOSE. IF CORNWELL CANNOT LAWFULLY DISCLAIM IMPLIED WARRANTIES UNDER THIS LIMITED WARRANTY, ALL SUCH IMPLIED WARRANTIES ARE LIMITED IN DURATION TO THE DURATION OF THIS WARRANTY.

IN NO EVENT SHALL CORNWELL BE LIABLE TO THE PURCHASER OR TO THE USER OF A CORNWELL PRODUCT FOR ANY SPECIAL, INCIDENTAL OR CONSEQUENTIAL DAMAGES BASED UPON BREACH OF WARRANTY, BREACH OF CONTRACT, NEGLIGENCE, TORT, OR ANY OTHER LEGAL THEORY. SUCH DAMAGES INCLUDE, WITHOUT LIMITATION, EXPENSES, LOST REVENUES, LOST SAVINGS, LOST PROFITS, OR ANY OTHER INCIDENTAL OR CONSEQUENTIAL DAMAGES ARISING FROM THE PURCHASE, USE OR INABILITY TO USE THE CORNWELL PRODUCT.

Some states do not allow the exclusion or limitation of incidental or consequential damages or exclusions or limitation on the duration of implied warranties or conditions, so the above limitations or exclusions may not apply to you. This warranty gives you specific legal rights, and you may also have other rights that vary by state.

Repair kits and replacement parts are available for many Cornwell products, regardless of whether or not the product is still covered by a warranty plan.

Cornwell Quality Tools Company
667 Seville Road • Wadsworth, OH 44281-1094