

# Operating Instructions • Warning Information • Parts Breakdown



## ! WARNING

Some dust created by power sanding, sawing, grinding, drilling, and other construction activities contains chemicals known to cause cancer, birth defects or other reproductive harm. Some examples of these chemicals are:

- lead from lead-based paints,
- crystalline silica from bricks and cement and other masonry products, and
- arsenic and chromium from chemically-treated lumber.

Your risk from these exposures varies, depending on how often you do this type of work. To reduce your exposure to these chemicals: work in a well ventilated area, and work with approved safety equipment, such as those dust masks that are specially designed to filter out microscopic particles.

## ! WARNING

- MAXIMUM RPM OF 12,000
- MAX AIR PRESSURE:  
90 PSIG, 6.2 BAR
- RPM OF THE ACCESSORY  
MUST EXCEED TOOL RPM



ALWAYS READ  
INSTRUCTIONS  
BEFORE USING  
POWER TOOLS



ALWAYS WEAR  
SAFETY  
GOGGLES



WEAR HEARING  
PROTECTION



AVOID  
PROLONGED  
EXPOSURE TO  
VIBRATION

## SPECIFICATIONS

Free Speed: .....	12,000 RPM
Air Inlet: .....	1/4" NPT
Recommended Hose Size: .....	3/8" I.D.
Recommended Air Pressure: .....	90 PSIG
Air Consumption: .....	11 CFM
Length .....	8.07"
Shipping Weight .....	2.85 lbs

## CAT3320

3/32" Orbital  
Low Profile  
Sander

# WARNING

**FAILURE TO OBSERVE THESE WARNINGS COULD RESULT IN INJURY.**



**THIS INSTRUCTION MANUAL CONTAINS IMPORTANT SAFETY INFORMATION.**

**READ THIS INSTRUCTION MANUAL CAREFULLY AND UNDERSTAND ALL INFORMATION BEFORE OPERATING THIS TOOL.**

- Always operate, inspect and maintain this tool in accordance with American National Standards Institute Safety Code of Portable Air Tools (ANSI B186.1) and any other applicable safety codes and regulations.
- For safety, top performance and maximum durability of parts, operate this tool at 90 psig; 6.2 bar max air pressure with 3/8" diameter air supply hose.
- Always wear impact-resistant eye and face protection when operating or performing maintenance on this tool. Always wear hearing protection when using this tool.
- High sound levels can cause permanent hearing loss. Use hearing protection as recommended by your employer or OSHA regulation.
- Keep the tool in efficient operating condition.
- Operators and maintenance personnel must be physically able to handle the bulk, weight and power of this tool.
- Air under pressure can cause severe injury. Never direct air at yourself or others. Always turn off the air supply, drain hose of air pressure and detach tool from air supply before installing, removing or adjusting any accessory on this tool, or before performing any maintenance on this tool. Failure to do so could result in injury. Whip hoses can cause serious injury. Always check for damaged, frayed or loose hoses and fittings, and replace immediately. Do not use quick detach couplings at tool. See instructions for correct set-up.
- Air powered tools can vibrate during use. Vibration, repetitive motions or uncomfortable positions over extended periods of time may be harmful to your



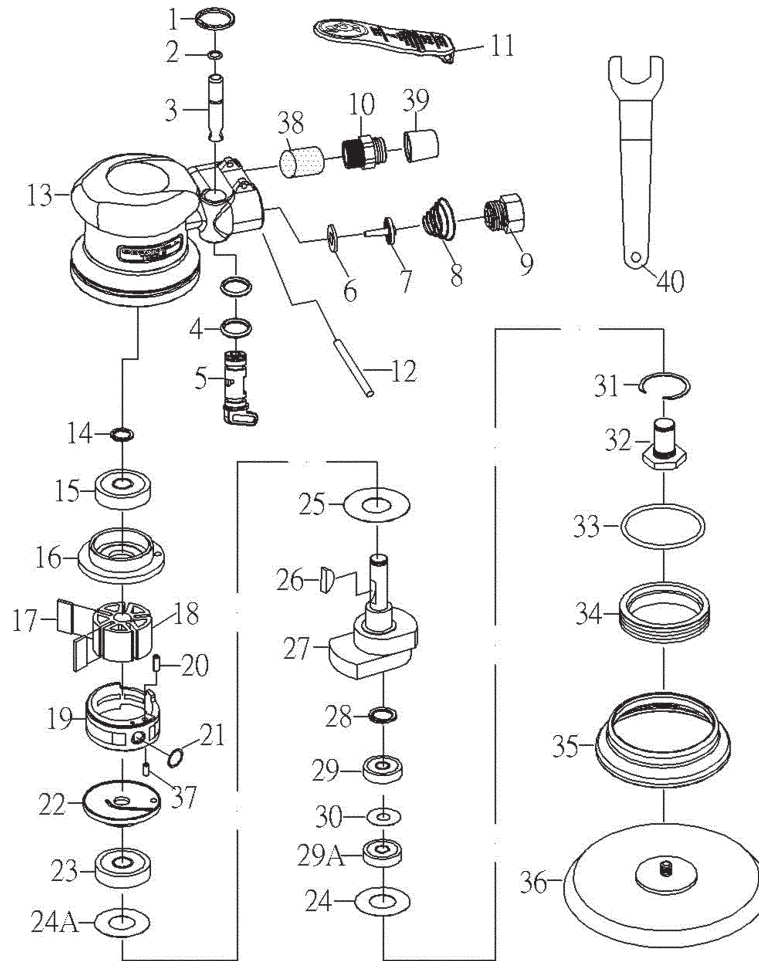
hands and arms. Discontinue use of tool if discomfort, tingling feeling or pain occurs. Seek medical advice before resuming use.

- Place the tool on the work before starting the tool.
- Slipping, tripping and/or falling while operating air tools can be a major cause of serious injury or death. Be aware of excess hose left on the walking or work surface.
- Keep body working stance balanced and firm. Do not overreach when operating the tool.
- Anticipate and be alert for sudden changes in motion during start up and operation of any power tool.
- Do not carry tool by the hose. Protect the hose from sharp objects and heat.
- Keep away from rotating end of tool. Do not wear jewelry or loose clothing. Secure long hair. Scalping can occur if hair is not kept away from tool and accessories. Choking can occur if neckwear is not kept away from tool and accessories.
- Do not lubricate tools with flammable or volatile liquids such as kerosene, diesel or jet fuel.
- Do not force tool beyond its rated capacity.
- Do not remove any labels. Replace any damaged labels.
- Use accessories recommended by Cornwell Tools.



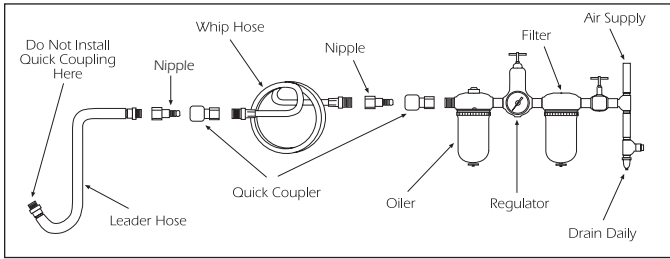
# PARTS BREAKDOWN - CAT3320

## 3/32" Orbital Low Profile Sander



Ref. #	Item #	DESCRIPTION	QTY	Ref. #	Item #	DESCRIPTION	QTY
1	RS246001	Snap Ring (ISTW13)	1	22	RS246024	Front Plate	1
2	RS246002	O-Ring (3.5x1.4)	1	23	RS221RA32	Bearing (6002ZZ)	1
3	RS316003	Valve Stem	1	24	RS246026	Washer	1
4	RS288302	O-Ring (P10)	2	24A	RS316024A	Washer	1
5	RS316005	Regulator	1	25	RS246027	Washer	1
6	RS246006	Washer	1	26	RS316026	Key	1
7	RS246007	Valve	1	27	RS332027	Motor Shaft Balancer (6")	1
8	RS246008	Spring	1	28	RS288304	Snap Ring (ISTW12)	1
9	RS246009	Air Inlet	1	29	RS316029	Bearing (6001LU)	1
10	RS246011	Exhaust	1	29A	RS227B25	Bearing (6001)	1
11	RS316011	Lever	1	30	RS316030	Shim	1
12	RS246014	Pin (3.3 x 26L)	1	31	RS246032	Snap Ring	1
13	RS332013	Housing	1	32	RS246033	Shaft	1
14	RS316014	Retaining Ring (STW10)	1	33	RS246034	O-Ring (G40)	1
15	RS10920	Bearing (6000ZZ)	1	34	RS316034	Lock Nut	1
16	RS246018	Rear Plate	1	35	RS246036	Shroud	1
17	RS246019	Rotor Blade	5	36	CAT6NVPAD1	Pad (N6)	1
18	RS316018	Rotor	1	37	RS246040	Pin (3x8)	1
19	RS316019	Cylinder	1	38	RS316038	Muffler Cotton	1
20	RS246022	Pin (3x13L)	1	39	RS246012	Sleeve	1
21	RS316021	O-Ring (S9)	1	40	RS316040	Stop Spanner	1

## Operating Instructions • Warning Information • Parts Breakdown



### AIR SUPPLY

Tools of this class operate on a wide range of air pressures. It is recommended that air pressure of these tools measures 90 PSI at the tool while running free. Higher pressure (over 90 psig; 6.2 bar) raises performance beyond the rated capacity of the tool, which will shorten tool life because of faster wear and could cause injury.

Always use clean, dry air. Dust, corrosive fumes and/or water in the air line will cause damage to the tool. Drain the air tank daily. Clean the air inlet filter screen on at least a weekly schedule. The recommended hookup procedure can be viewed in the above figure.

The air inlet used for connecting air supply has standard 1/4" NPT. Line pressure should be increased to compensate for unusually long air hoses (over 25 feet). Minimum hose diameter should be 3/8" I.D. and fittings should have the same inside dimensions and be tightly secured.

### TROUBLESHOOTING

Other factors outside the tool may cause loss of power or erratic action. Reduced compressor output, excessive drain on the air line, moisture or restrictions in air pipes or the use of hose connections of improper size or poor conditions may reduce air supply. If outside conditions are in order, disconnect tool from hose and take tool to your nearest Cornwell Tools authorized service center.

### LUBRICATION & MAINTENANCE

Lubricate the air motor daily with quality air tool oil. If no air line oiler is used, run 1/2 oz. of oil through the tool. The oil can be squirted into the tool air inlet or into the hose at the nearest connection to the air supply, then run the tool.

### WARRANTY

Cornwell Tools warrants its air tools for a period of 1 year to the consumer. We will repair any air tool covered under this warranty which proves to be defective in material or workmanship during the warranty period. In order to have your tool repaired, return the tool to any Cornwell Tools Authorized Warranty Center, freight prepaid. Please include a copy of your proof of purchase and a brief description of the problem. The tool will be inspected and if any part or parts are found to be defective in material or workmanship, they will be repaired free of charge and the repaired tool will be returned to you freight prepaid.

This warranty gives you specific rights. You may also have other rights which vary from state to state.

The foregoing obligation is Cornwell Tool's sole liability under this or any implied warranty and under no circumstances shall Cornwell Tools be liable for any incidental or consequential damages.

**Note:** Some states do not allow the exclusion or limitation of incidental or consequential damages, so the above limitation or exclusion may not apply to you.