

## Operating Instructions • Warning Information • Parts Breakdown



### **!WARNING**

Some dust created by power sanding, sawing, grinding, drilling, and other construction activities contains chemicals known to cause cancer, birth defects or other reproductive harm. Some examples of these chemicals are:

- lead from lead-based paints,
- crystalline silica from bricks and cement and other masonry products, and
- arsenic and chromium from chemically-treated lumber.

Your risk from these exposures varies, depending on how often you do this type of work. To reduce your exposure to these chemicals: work in a well ventilated area, and work with approved safety equipment, such as those dust masks that are specially designed to filter out microscopic particles.

### **!WARNING**

- **MAXIMUM AIR PRESSURE:**  
90 PSIG, 6.2 BAR



**ALWAYS READ  
INSTRUCTIONS  
BEFORE USING  
POWER TOOLS**



**ALWAYS WEAR  
SAFETY GOGGLES**



**WEAR HEARING  
PROTECTION**



**AVOID PROLONGED  
EXPOSURE TO  
VIBRATION**

### **SPECIFICATIONS**

Strokes per Minute: .....2,600 SPM  
Air Inlet: .....1/4" NPT  
Recommended Hose Size: .....3/8" I.D.  
Recommended Air Pressure: .....90 PSIG, 6.2 BAR  
Average Air Consumption: .....3 CFM  
Sound Pressure Level: .....85 dBA  
Length: .....7.6"  
Shipping Weight: .....1.9 lbs

## **CAT330AN** Air Nibbler

Copyright © Professional Tool Products, 2009  
All rights reserved

# !WARNING

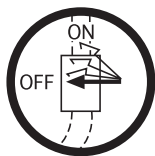
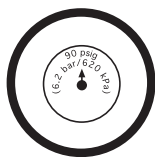
## FAILURE TO OBSERVE THESE WARNINGS COULD RESULT IN INJURY.



### THIS INSTRUCTION MANUAL CONTAINS IMPORTANT SAFETY INFORMATION.

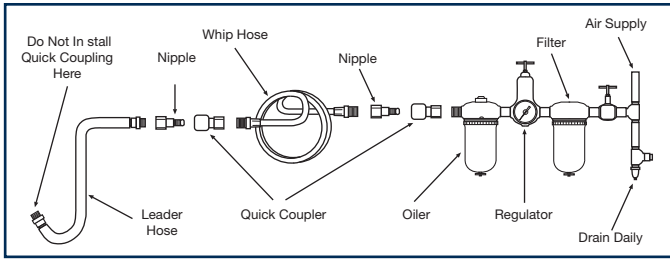
### READ THIS INSTRUCTION MANUAL CAREFULLY AND UNDERSTAND ALL INFORMATION BEFORE OPERATING THIS TOOL.

- Always operate, inspect and maintain this tool in accordance with American National Standards Institute Safety Code of Portable Air Tools (ANSI B186.1) and any other applicable safety codes and regulations.
- For safety, top performance and maximum durability of parts, operate this tool at 90 psig; 6.2 bar max air pressure with 3/8" diameter air supply hose.
- Always wear impact-resistant eye and face protection when operating or performing maintenance on this tool. Always wear hearing protection when using this tool.
- High sound levels can cause permanent hearing loss. Use hearing protection as recommended by your employer or OSHA regulation.
- Keep the tool in efficient operating condition.
- Operators and maintenance personnel must be physically able to handle the bulk, weight and power of this tool.
- Air under pressure can cause severe injury. Never direct air at yourself or others. Always turn off the air supply, drain hose of air pressure and detach tool from air supply before installing, removing or adjusting any accessory on this tool, or before performing any maintenance on this tool. Failure to do so could result in injury. Whip hoses can cause serious injury. Always check for damaged, frayed or loose hoses and fittings, and replace immediately. Do not use quick detach couplings at tool. See instructions for correct set-up.
- Air powered tools can vibrate during use. Vibration, repetitive motions or uncomfortable positions over extended periods of time may be harmful to your hands and arms. Discontinue use of tool if discomfort, tingling feeling or pain occurs. Seek medical advice before resuming use.



- Place the tool on the work before starting the tool.
- Do not indulge in any horseplay with this tool.
- Slipping, tripping and/or falling while operating air tools can be a major cause of serious injury or death. Be aware of excess hose left on the walking or work surface.
- Keep body working stance balanced and firm. Do not overreach when operating the tool.
- Anticipate and be alert for sudden changes in motion during start up and operation of any power tool.
- Do not carry tool by the hose. Protect the hose from sharp objects and heat.
- Tool shaft may continue to rotate briefly after throttle is released. Avoid direct contact with accessories during and after use. Gloves will reduce the risk of cuts or burns.
- Keep away from rotating end of tool. Do not wear jewelry or loose clothing. Secure long hair. Scalping can occur if hair is not kept away from tool and accessories. Choking can occur if neckwear is not kept away from tool and accessories.
- Avoid direct contact with accessory and work surface during and after work.
- Cutting edges and saw blades can become hot during use. Do not touch.
- Wear gloves to protect hands.
- Never force the tool to cut faster or through heavier gauge material than rated capacity.
- Do not lubricate tools with flammable or volatile liquids such as kerosene, diesel or jet fuel.
- Do not remove any labels. Replace any damaged labels.
- Use accessories recommended by Cornwell Tools.

# Operating Instructions • Warning Information • Parts Breakdown



## AIR SUPPLY

Tools of this class operate on a wide range of air pressures. It is recommended that air pressure of these tools measures 90 PSI at the tool while running free. Higher pressure (over 90 psig; 6.2 bar) raises performance beyond the rated capacity of the tool, which will shorten tool life because of faster wear and could cause injury.

Always use clean, dry air. Dust, corrosive fumes and/or water in the air line will cause damage to the tool. Drain the air tank daily. Clean the air inlet filter screen on at least a weekly schedule. The recommended hookup procedure can be viewed in the above figure.

The air inlet used for connecting air supply has standard 1/4" NPT. Line pressure should be increased to compensate for unusually long air hoses (over 25 feet). Minimum hose diameter should be 3/8" I.D. and fittings should have the same inside dimensions and be tightly secured.

## LUBRICATION

Lubricate this air tool daily with quality air tool oil. If no air line oiler is used, run 1/2 oz. of oil through the tool. The oil can be squirted into the tool air inlet or into the hose at the nearest connection to the air supply, then run the tool.

Overfilling will cause a reduction in the power of the tool.

## OPERATION

### Punch Replacement:

Disconnect air supply from tool.

1. Loosen nut (#41) from die.
2. Remove die (#40).
3. Remove screw (#39).
4. Replace punch.
5. Reverse above procedure, check screws for tightness before operating tool.

### Die Adjustment:

Disconnect air supply from tool.

Loosen nut (#41). Turn die to desired position. Tighten nut (#41).

### Warning:

- Cutting with this tool will create sharp edges. Wear gloves to protect hands.
- Avoid direct contact with work surface during and after work.
- Cutting edges can become hot during use. Do not touch.
- Never force the tool to cut faster or through heavier gauge material than rated capacity.

## WARRANTY

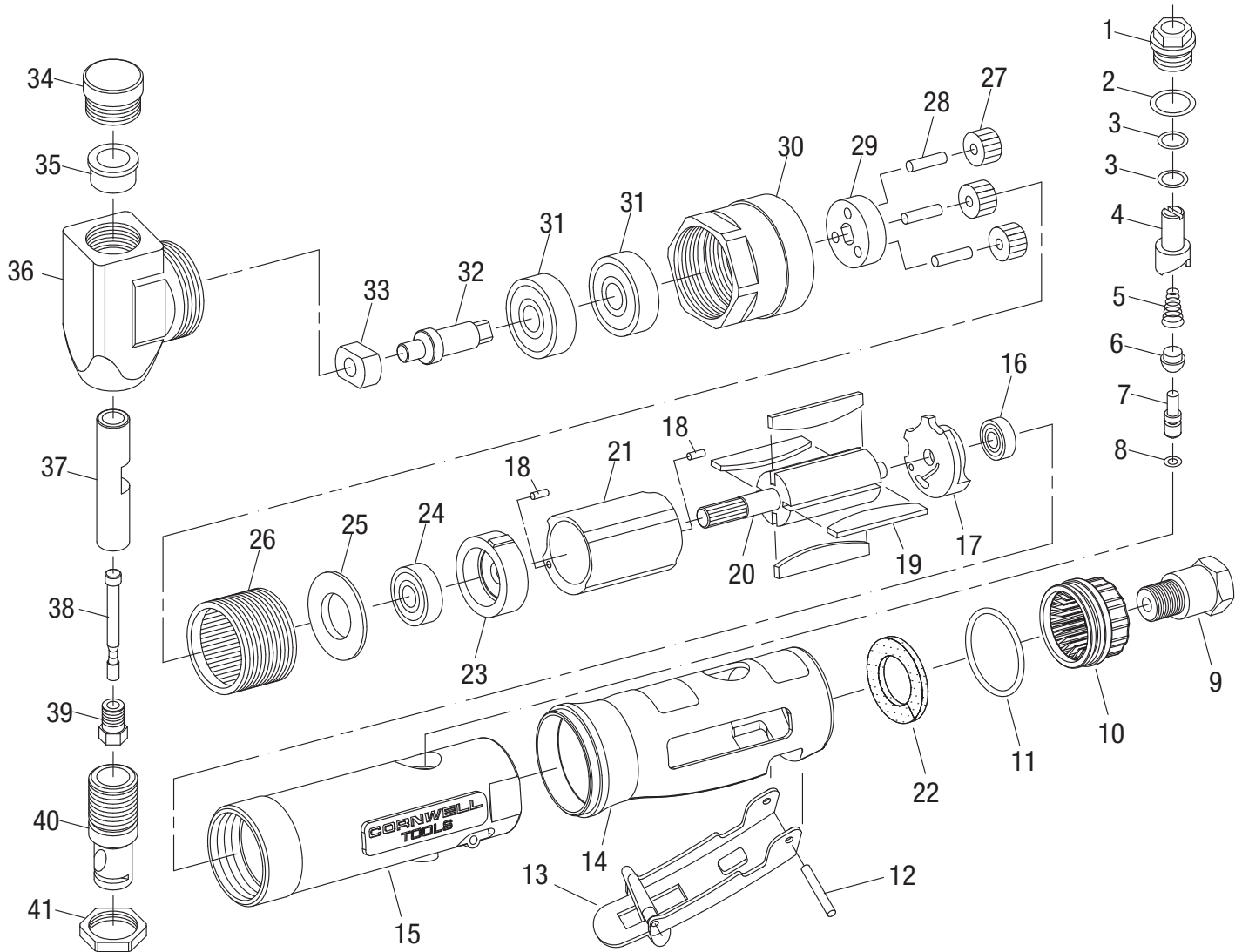
Cornwell warrants this air tool for a period of 1 year to the consumer. We will repair any CAT330AN covered under this warranty which proves to be defective in material or workmanship during the warranty period. In order to have your tool repaired, return the tool to any Cornwell Authorized Warranty Center, freight prepaid. Please include a copy of your proof of purchase and a brief description of the problem. The tool will be inspected and if any part or parts are found to be defective in material or workmanship, they will be repaired free of charge and the repaired tool will be returned to you freight prepaid.

This warranty gives you specific rights. You may also have other rights which vary from state to state.

The foregoing obligation is Cornwell's sole liability under this or any implied warranty and under no circumstances shall Cornwell be liable for any incidental or consequential damages.

**Note:** Some states do not allow the exclusion or limitation of incidental or consequential damages so the above limitation or exclusion may not apply to you.

# PARTS BREAKDOWN - CAT330AN



Ref. #	Item #	DESCRIPTION	QTY	Ref #	Item#	DESCRIPTION	QTY
1	RS31501	Screw	1	22	RS31522	Cone Muffler	1
2	RS31502	O-Ring (P12)	1	23	RS31523	Front Plate	1
3	RS31503	O-Ring (P8)	2	24	RS30524	Bearing (608ZZ)	1
4	RS31504	Air Regulator	1	25	RS330AN25	Washer	1
5	RS31505	Spring	1	26	RS330AN26	Thread Ring Gear (42T)	1
6	RS31506	Valve Stem Bushing	1	27	RS31527	Idler Gear (18T)	3
7	RS31507	Valve Stem	1	28	RS31528	Idler Gear Pin	3
8	RS246002	O-Ring (3.5x1.4)	1	29	RS330AN29	Gear Plate	1
9	RS31509	Air Inlet	1	30	RS330AN30	Clamp Nut	1
10	RS70010A	Exhaust Sleeve	1	31	RS29120	Bearing (6200ZZ)	2
11	RS31511	O-Ring (26.7x1.78)	1	32	RS330AN32	Crank Shaft	1
12	RS31512	Spring Pin	1	33	RS330AN33	Cam	1
13	RS20013CW	Lever	1	34	RS330AN34	Head Cap	1
14	RS2PST14	Housing Cover	1	35	RS330AN35	Bushing	1
15	RS330AN15	Housing	1	36	RS330AN36	Head	1
16	RS30516	Bearing (696ZZ)	1	37	RS330AN37	Slide Spindle	1
17	RS31517	Rear Plate	1	38	RS330AN38	Punch	1
18	RS31518	Pin	2	39	RS330AN39	Screw	1
19	RS31519	Rotor Blade	4	40	RS330AN40	Die	1
20	RS330AN20	Rotor (6T)	1	41	RS330AN41	Nut	1
21	RS31521	Cylinder	1				