

# Operating Instructions • Warning Information • Parts Breakdown



## ⚠ WARNING



RATED RPM OF THE  
ACCESSORY USED MUST  
EXCEED THE MAXIMUM  
TOOL RPM SHOWN



ALWAYS READ  
INSTRUCTIONS BEFORE  
USING POWER TOOLS



ALWAYS WEAR  
SAFETY GOGGLES



ALWAYS WEAR HEARING  
PROTECTION



ALWAYS WEAR  
BREATHING APPARATUS



AVOID PROLONGED  
EXPOSURE TO VIBRATION



## ⚠ WARNING

Some dust created by power sanding, sawing, grinding, drilling, and other construction activities contains chemicals known to cause cancer, birth defects or other reproductive harm. Some examples of these chemicals are:

- lead from lead-based paints,
- crystalline silica from bricks and cement and other masonry products, and
- arsenic and chromium from chemically-treated lumber.

Your risk from these exposures varies, depending on how often you do this type of work. To reduce your exposure to these chemicals: work in a well ventilated area, and work with approved safety equipment, such as those dust masks that are specially designed

## SPECIFICATIONS

Max. Free Speed .....	12,000 RPM
Recommended Air Pressure.....	90 PSIG
Recommended Air Hose Size .....	3/8"
Air Consumption .....	1.6 CFM (12 SCFM)
Vibration Level .....	0.8 (M/S^2)
Sound Level .....	80 dBA
Overall Length.....	5.3"
Overall Height .....	3.5"
Weight .....	1.3 Lbs.
Orbit .....	3/32"

## CAT325 3" 3/32" ORBIT PALM SANDER

Copyright © Professional Tool Products, 2016  
All rights reserved

# ! WARNING

## FAILURE TO OBSERVE THESE WARNINGS COULD RESULT IN INJURY.

### THIS INSTRUCTION MANUAL CONTAINS IMPORTANT SAFETY INFORMATION.



### READ THIS INSTRUCTION MANUAL CAREFULLY AND UNDERSTAND ALL INFORMATION BEFORE OPERATING THIS TOOL.

- It is the responsibility of the owner to make sure all personnel read this manual prior to using this air tool. It is also the responsibility of the air tool owner to keep this manual intact and in a convenient location for all to see and read. If the manual or product labels are lost or not legible, contact Cornwell for replacements. If the operator is not fluent in English, the product and safety instructions shall be read to and discussed with the operator in the operator's native language by the purchaser/owner or his designee, making sure that the operator comprehends its contents.

- Always operate, inspect and maintain this tool in accordance with American National Standards Institute Safety Code of Portable Air Tools (ANSI B186.1) and any other applicable safety codes and regulations.



- For safety, top performance and maximum durability of parts, operate this tool at 90 psig: 6.2 bar max air pressure with 3/8" diameter air supply hose.



- Always wear impact-resistant eye protection when operating or performing maintenance on this tool (users and bystanders).



- Always wear hearing protection when using this tool (users and bystanders). High sound levels can cause permanent hearing loss. Use hearing protection as recommended by your employer or OSHA regulation.



- Keep the tool in efficient operating condition.
- Always wear breathing apparatus.
- Operators and maintenance personnel must be physically able to handle the bulk, weight and power of this tool.



- Keep tool out of reach of children.
- Air under pressure can cause severe injury. Never direct air at yourself or others. Always turn off the air supply, drain hose of air pressure and detach tool from air supply before installing, removing or adjusting any accessory on this tool, or before performing any maintenance on this tool. Failure to do so could result in injury. Whip hoses can cause serious injury. Always check for damaged, frayed or loose hoses and fittings, and replace immediately. Do not use quick detach couplings at tool. See instructions for correct set-up on page 4.

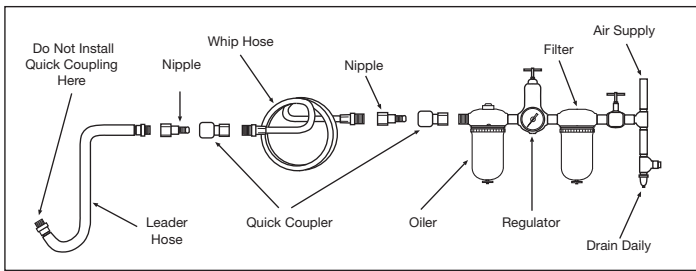


- Air powered tools can vibrate during use. Vibration, repetitive motions or uncomfortable positions over extended periods of time may be harmful to your hands and arms. Discontinue use of tool if discomfort,

tingling feeling or pain occurs. Seek medical advice before resuming use.

- To reduce exposure to sanding debris, work in a well ventilated area with proper personal protection equipment.
- Place the tool on the work before starting the tool. Do not point or indulge in any horseplay with this tool.
- Note direction of rotation BEFORE operating this tool.
- Slipping, tripping and/or falling while operating air tools can be a major cause of serious injury or death. Be aware of excess hose left on the walking or work surface.
- Keep body working stance balanced and firm. Do not overreach when operating the tool.
- Anticipate and be alert for sudden changes in motion during start up and operation of any power tool.
- Do not carry tool by the hose. Protect the hose from sharp objects and heat.
- Tool shaft may continue to rotate briefly after throttle is released. Avoid direct contact with accessories during and after use. Gloves will reduce the risk of cuts or burns.
- Keep away from rotating end of tool. Do not wear jewelry or loose clothing. Secure long hair. Scalping can occur if hair is not kept away from tool and accessories. Choking can occur if neckwear is not kept away from tool and accessories.
- Do not lubricate tools with flammable or volatile liquids such as kerosene, diesel or jet fuel.
- This tool is not insulated against electric shock.
- This tool must not be used in explosive atmospheres.
- Do not force tool beyond its rated capacity.
- Use replacement parts and accessories recommended by Cornwell Tools.**
- RPM of the accessory must exceed tool RPM.**
- Use only a sanding pad & sandpaper with this tool. Do not use any grinding wheel, burr or metal removing accessory with this tool
- Do not use (or modify) the tool for any other purpose than that for which it was designed without consulting the manufacturer's authorized representative.
- Do not remove any labels. Replace any damaged labels.
- Servicing and repairs should only be made by an authorized service center.
- This product may contain one or more chemicals known to the State of California to cause cancer and birth defects or other reproductive harm. *Wash hands thoroughly after handling.*
- Failure to heed these warnings may result in serious or fatal personal injury and/or property damage.





## AIR SUPPLY

Tools operate on a wide range of air pressures. It is recommended that air pressure of these tools measures 90 psig at the tool with the trigger fully depressed and no load applied to the tool. Higher pressure (over 90 psig; 6.2 bar) raises performance beyond the rated capacity of the tool, which will shorten tool life and could cause injury.

Always use clean, dry air. Dust, corrosive fumes and/or water in the air line will cause damage to the tool. Drain water from air lines and compressor prior to running tool. Clean the air inlet filter screen weekly. The recommended hookup procedure can be viewed in the above figure.

The air inlet used for connecting air supply has standard 1/4" NPT. Line pressure should be increased to compensate for unusually long air hoses (over 25 feet). Minimum hose diameter should be 3/8" I.D. and fittings should have the same inside dimensions and be tightly secured.

Ensure an accessible emergency shut off valve has been installed in the air supply line and make others aware of its location.

## TROUBLESHOOTING

Other factors outside the tool may cause loss of power or erratic action. Reduced compressor output, excessive drain on the air line, moisture or restrictions in air pipes or the use of hose connections of improper size or poor conditions may reduce air supply. Grit or gum deposits in the tool may cut power and may be corrected by cleaning the air strainer and flushing out the tool with gum solvent oil or an equal mixture of SAE #10 and kerosene. If outside conditions are in order, disconnect tool from hose and take tool to your nearest authorized service center.



## LUBRICATION

Lubricate the air motor daily with high quality air tool oil. If no air line oiler is used, run 1/2 oz. of oil through the tool. The oil can be squirted into the tool air inlet or into the hose at the nearest connection to the air supply, then run the tool. A rust inhibitive oil is acceptable for air tools.

**WARNING:** After an air tool has been lubricated, oil will discharge through the exhaust port during the first few seconds of operation. The exhaust port must be covered with a towel before applying air pressure to prevent serious injury.

## OPERATION

**Always turn off the air supply, drain hose of air pressure and detach tool from air supply before installing, removing or adjusting any part or accessory on this tool, or before performing any maintenance on this tool.**

After mounting sandpaper, start this sander under a bench in order to make sure sandpaper is firmly attached. Set the sander down on the work evenly and move it slowly back and forth in wide, overlapping areas. Additional pressure may be used to make more efficient use of the tool when material to be sanded is thick. Lighter pressure may be used in delicate sanding or when using edges of sanding pad. When finished sanding, lift it off the work before stopping the motor.

**NOTE:** During operation, safety goggles should always be worn to guard against flying debris (users and bystanders).

## WARRANTY

Cornwell Quality Tools Company ("Cornwell") warrants this product against defects in material and workmanship for a period of TWO (2) YEARS from the date of original retail purchase. Subject to the conditions and limitations set forth below, Cornwell will, at its option, either repair or replace any part of the product(s) that proves defective by reason of improper workmanship or materials.

This warranty does not cover any damage to this product that results from accident, abuse, misuse, natural or personal disaster, or any unauthorized disassembly, repair, or modification. Repairs, disassembly and modification are only authorized to be made by Cornwell or a Cornwell Authorized Warranty Center.

### WARRANTY SERVICE

In order to have your tool repaired, return the tool to any Cornwell Authorized Warranty Center, freight prepaid. Please include a copy of your proof of purchase and a brief description of the problem. The tool will be inspected and if any part or parts are found to be defective in material or workmanship, they will be repaired free of charge, and the repaired tool will be returned to you freight prepaid.

### EXCLUSIONS AND LIMITATIONS

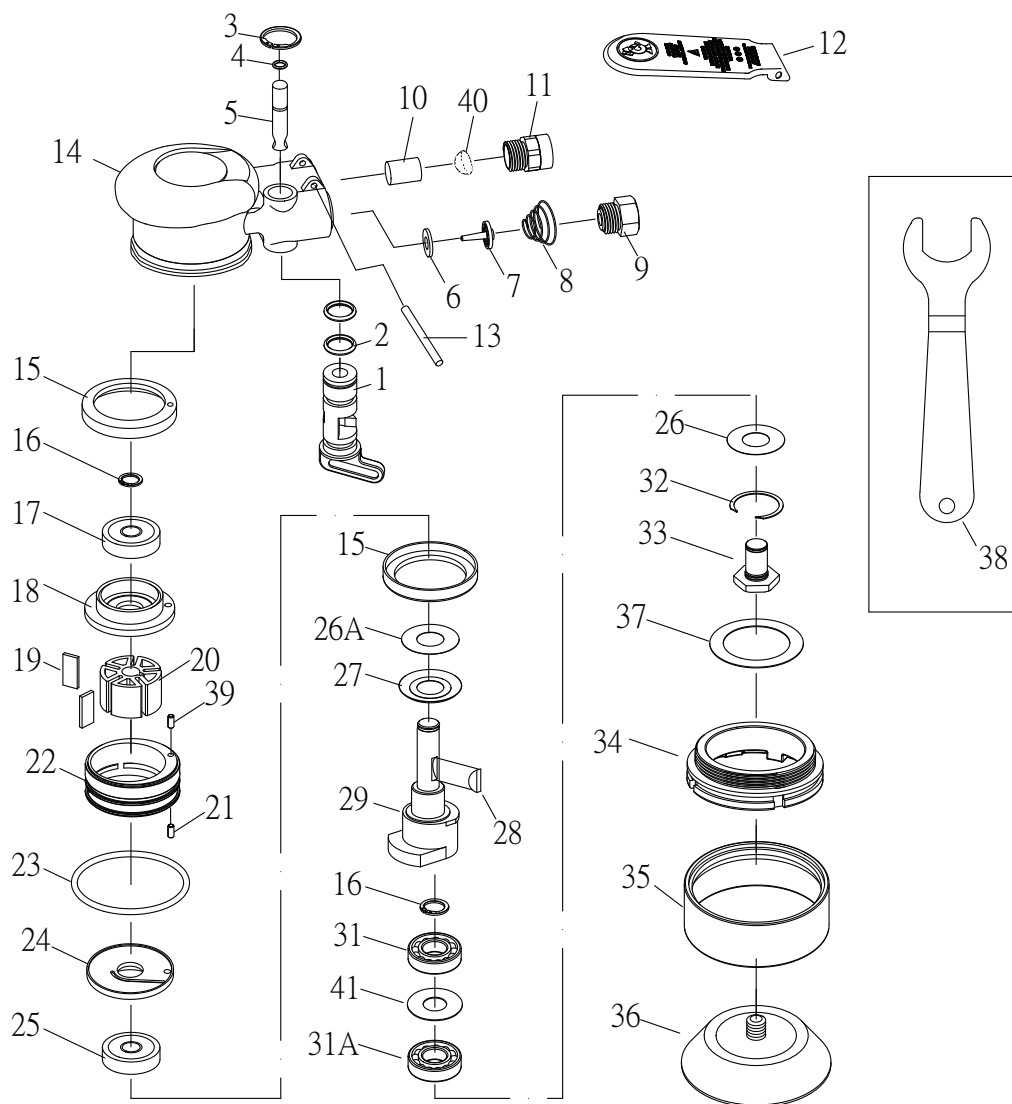
THIS WARRANTY AND THE REMEDIES SET FORTH ABOVE ARE EXCLUSIVE AND IN LIEU OF ALL OTHER WARRANTIES, REMEDIES AND CONDITIONS, WHETHER ORAL OR WRITTEN, EXPRESS OR IMPLIED. CORNWELL SPECIFICALLY DISCLAIMS ANY AND ALL IMPLIED WARRANTIES, INCLUDING, TO THE EXTENT PERMITTED BY APPLICABLE LAW, ANY WARRANTIES OF MERCHANTABILITY AND FITNESS FOR A PARTICULAR PURPOSE. IF CORNWELL CANNOT LAWFULLY DISCLAIM IMPLIED WARRANTIES UNDER THIS LIMITED WARRANTY, ALL SUCH IMPLIED WARRANTIES ARE LIMITED IN DURATION TO THE DURATION OF THIS WARRANTY.

IN NO EVENT SHALL CORNWELL BE LIABLE TO THE PURCHASER OR TO THE USER OF A CORNWELL PRODUCT FOR ANY SPECIAL, INCIDENTAL OR CONSEQUENTIAL DAMAGES BASED UPON BREACH OF WARRANTY, BREACH OF CONTRACT, NEGLIGENCE, TORT, OR ANY OTHER LEGAL THEORY. SUCH DAMAGES INCLUDE, WITHOUT LIMITATION, EXPENSES, LOST REVENUES, LOST SAVINGS, LOST PROFITS, OR ANY OTHER INCIDENTAL OR CONSEQUENTIAL DAMAGES ARISING FROM THE PURCHASE, USE OR INABILITY TO USE THE CORNWELL PRODUCT.

Some states do not allow the exclusion or limitation of incidental or consequential damages or exclusions or limitation on the duration of implied warranties or conditions, so the above limitations or exclusions may not apply to you. This warranty gives you specific legal rights, and you may also have other rights that vary by state.

Repair kits and replacement parts are available for many Cornwell products, regardless of whether or not the product is still covered by a warranty plan.

# PARTS BREAKDOWN - CAT325



Ref. #	Item #	DESCRIPTION	QTY	Ref. #	Item #	DESCRIPTION	QTY
01	RS325001	REGULATOR	1	23	RS325023	O-RING	1
02	RS288302	O-RING	2	24	RS246529	FRONT PLATE	1
03	RS288304	SNAP RING	1	25	RS221RA32	BEARING (6002ZZ)	1
04	RS31508	O-RING (3.5 x 1.4)	1	26	RS233236	WASHER	1
05	RS325005	VALVE STEM	1	26A	RS316024A	WASHER (0.4MM)	1
06	RS246006	WASHER	1	27	RS233229	WASHER (0.2MM)	1
07	RS246509	VALVE	1	28	RS246533	ROTOR KEY	1
08	RS246510	SPRING	1	29	RS325029	MOTOR SHAFT BALANCER (3")	1
09	RS246009	AIR INLET	1	31	RS24804	BEARING (6900ZZ)	1
10	RS246503	SILENCER	1	31A	RS143030	BEARING (6900-2RS)	1
11	RS325011	EXHAUST SLEEVE	1	32	RS233235	SNAP RING	1
12	RS325012	LEVER	1	33	RS233237	SHAFT	1
13	RS246014	PIN (3.3 x 26)	1	34	RS233239	HOUSING COVER	1
14	RS325014	HOUSING	1	35	RS233240	SHROUD	1
15	RS233216	RUBBER BUSHING	2	36	CAT3HPAD	HOOK AND LOOP PAD	1
16	RS246520	SNAP RING	2		CAT3VPAD	VINYL PAD	1
17	RS10920	BEARING (6000ZZ)	1	37	RS233238	WASHER	1
18	RS246522	REAR PLATE	1	38	RS233242	STOP SPANNER (17MM)	1
19	RS246019	ROTOR BLADE	5	39	RS325039	PIN (3 x 14L)	1
20	RS316018	ROTOR	1	40	RS246504	STAINLESS MESH	1
21	RS246040	PIN (3 x 8)	1	41	RS233233	SHIM	1
22	RS325022	CYLINDER	1	Not Shown	RSCAT325PLK	PRODUCT LABEL KIT	1