

- **Operating Instructions**
- **Warning Information**
- **Parts Breakdown**



!WARNING

Some dust created by power sanding, sawing, grinding, drilling, and other construction activities contains chemicals known to cause cancer, birth defects or other reproductive harm. Some examples of these chemicals are:

- lead from lead-based paints,
- crystalline silica from bricks and cement and other masonry products, and
- arsenic and chromium from chemically-treated lumber.

Your risk from these exposures varies, depending on how often you do this type of work. To reduce your exposure to these chemicals: work in a well ventilated area, and work with approved safety equipment, such as those dust masks that are specially designed to filter out microscopic particles.



SPECIFICATIONS

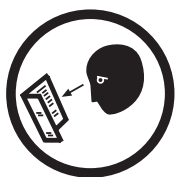
Air Pressure	.90 PSI (6.2 Bar)
Air Consumption	.16 SCFM
Pad Size	.6"
Maximum Speed	10,000 RPM
Weight	1.85 Lbs.
Air Inlet	1/4" NPT
Overall Length	.61"
Rec. Hose Size	3/8"
Sound Level	.81 dba

CAT-316-DA 3/16" PRO. 6" RANDOM ORBITAL PALM SANDER

WARNING!

FAILURE TO OBSERVE THESE WARNINGS COULD RESULT IN INJURY

This Instruction Manual Contains Important Safety Information.



Read THIS INSTRUCTION MANUAL Carefully and understand ALL INFORMATION Before Operating THIS Tool.

- Always operate, inspect and maintain this tool in accordance with American National Standards Institute Safety Code of Portable Air Tools (ANSI B186.1) and any other applicable safety codes and regulations.
- For safety, top performance and maximum durability of parts, operate this tool at 90 psig 6.2 bar max air pressure with 3/8" diameter air supply hose.



• Always wear impact-resistant eye and face protection when operating or performing maintenance on this tool. Always wear hearing protection when using this tool.



• High sound levels can cause permanent hearing loss. Use hearing protection as recommended by your employer or OSHA regulation.

- Keep the tool in efficient operating condition.
- Operators and maintenance personnel must be physically able to handle the bulk, weight and power of this tool.



• Air under pressure can cause severe injury. Never direct air at yourself or others. Always turn off the air supply, drain hose of air pressure and detach tool from air supply before installing, removing or adjusting any accessory on this tool, or before performing any

maintenance on this tool. Failure to do so could result in injury. Whip hoses can cause serious injury. Always check for damaged, frayed or loose hoses and fittings, and replace immediately. Do not use quick detach couplings at tool. See instructions for correct set-up.



• Air powered tools can vibrate in use. Vibration, repetitive motions or uncomfortable positions over extended periods of time may be harmful to your hands and arms. Discontinue use of tool if discomfort, tingling feeling or pain occurs. Seek medical advice before resuming use.

- Place the tool on the work before starting the tool.



• Slipping, tripping and/or falling while operating air tools can be a major cause of serious injury or death. Be aware of excess hose left on the walking or work surface.

- Keep body working stance balanced and firm. Do not overreach when operating the tool.
- Anticipate and be alert for sudden changes in motion during start up and operation of any power tool.

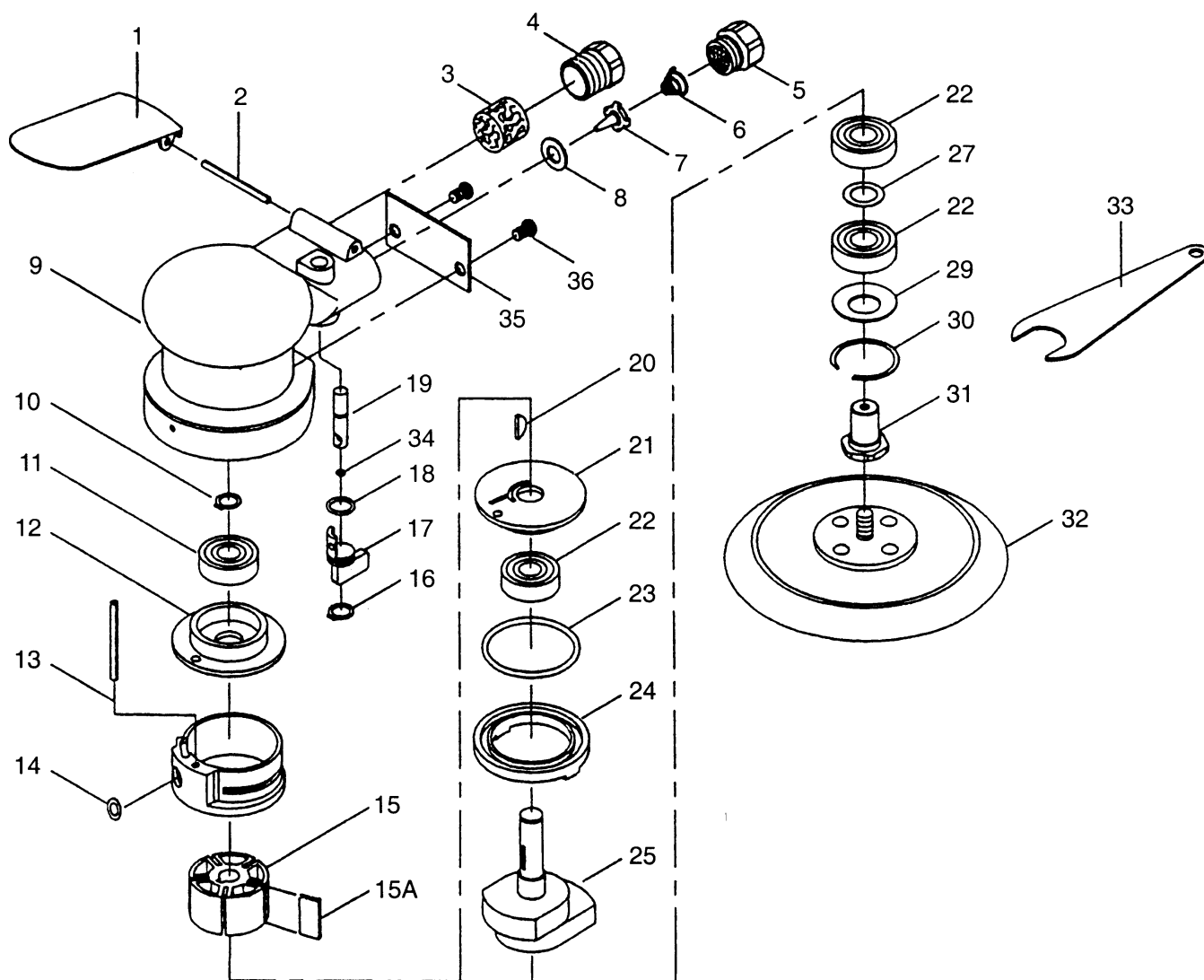


• Do not carry tool by the hose. Protect the hose from sharp objects and heat.

- Do not lubricate tools with flammable or volatile liquids such as kerosene, diesel or jet fuel.
- Don't force tool beyond its rated capacity.
- Do not remove any labels. Replace any damaged labels.



CAT-316-DA 3/16" PRO. 6" RANDOM ORBITAL PALM SANDER



Ref. #	Part #	Description	Qty.	Ref. #	Part #	Description	Qty.
1	RS31601	Lever	1	18	RS47518	O-Ring	1
2	RS47502	Pin	1	19	RS47519	Stem	1
3	RS47503	Muffler	1	20	RS47520	Key	1
4	RS47504	Muffler Body	1	21	RS47521	Front End Plate	1
5	RS47505	Inlet Bushing	1	22	RS227B25	Bearing	3
6	RS47506	Spring	1	23	RS47523	O-Ring	1
7	RS47507	Valve	1	24	RS47524	Lock Ring	1
8	RS47508	Seat	1	25	RS47525	Shaft Balancer--3/16" Orbit	1
9	RS31609	Housing	1	27	RS47527	Shim	1
10	RS47510	Ring	1	29	RS47529	Washer	1
11	RS10920	Bearing	1	30	RS47530	Ring	1
12	RS47512	Rear End Plate	1	31	RS47531	Spindle	1
13	RS47513	Cylinder Assy.	1	32	CAT-6NV-PAD	6" TE NV Vinyl Face Pad	1
14	RS47514	O-Ring	1	33	RS47533	Pad Wrench	1
15	RS47515	Rotor	1	34	RS47534	O-Ring	1
15A	RS47515A	Rotor Blade	5	35	RS47535	Plate	1
16	RS47516	Ring	1	36	RS47536	Screw	2
17	RS47517	Control	1		CAT-4126	Vacuum Conversion Kit	(Optional)
				Also available:			
				CAT-6NVH-PAD 6" TE NV Hook Face Pad			
				CAT-6VH-PAD 6" TE Vacuum Hook Face Pad			

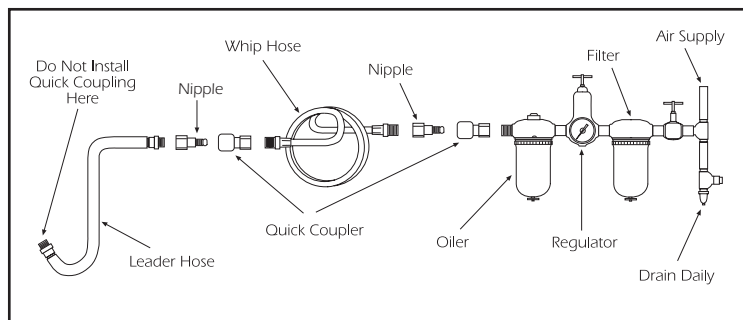


Figure 1

AIR SUPPLY

Tools of this class operate on a wide range of air pressures. It is recommended that air pressure of these tools measures 90 PSI at the tool while running free. Higher pressure and unclean air will shorten tool life because of faster wear and may create a hazardous condition.

Water in the air line will cause damage to the tool. Drain the air tank daily. Clean the air inlet filter screen on at least a weekly schedule. The recommended hook-up procedure can be viewed in Figure 1.

The air inlet (Figure 2), used for connecting air supply, has standard 1/4" NPT American Thread.

Line pressure should be increased to compensate for unusually long air hoses (over 25 feet). Minimum hose diameter should be 3/8" I.D. and fittings should have the same inside dimensions.

TROUBLESHOOTING

Other factors outside the tool may cause loss of power or erratic action. Reduced compressor output, excessive drain on the air line, moisture or restrictions in air pipes or the use of hose connections of improper size or poor conditions may reduce air supply. If outside conditions are in order and the tool still runs erratically, disconnect tool from hose and take tool to your nearest Cornwell Tools authorized service center.

LUBRICATION & MAINTENANCE

Lubricate the tool daily with a good grade of air tool oil. If no air line oiler is used, run a teaspoon of oil through the tool. The oil can be squirted into the tool air inlet Figure 2, or into the hose at the nearest connection to the air supply, then run the tool. A rust inhibitive oil is acceptable for air tools.

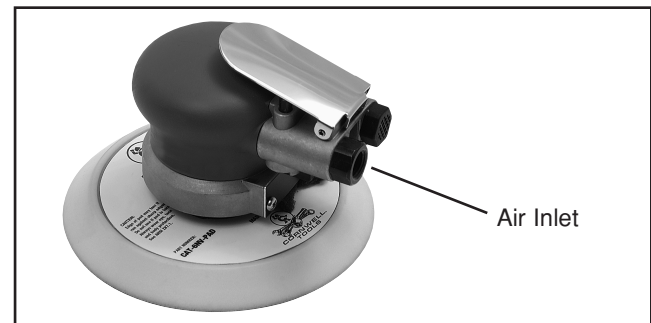


Figure 2

WARRANTY

Cornwell Tools warrants its air tools for a period of 1 year to the consumer. We will repair any air tool covered under this warranty which proves to be defective in material or workmanship during the warranty period. In order to have your tool repaired, return the tool to any Cornwell Tools Authorized Warranty Center, freight prepaid. Please include a copy of your proof of purchase and a brief description of the problem. The tool will be inspected and if any part or parts are found to be defective in material or workmanship, they will be repaired free of charge and the repaired tool will be returned to you freight prepaid.

This warranty gives you specific rights. You may also have other rights which vary from state to state.

The foregoing obligation is Cornwell Tools' sole liability under this or any implied warranty and under no circumstances shall Cornwell Tools be liable for any incidental or consequential damages.

Note: Some states do not allow the exclusion or limitation of incidental or consequential damages so the above limitation or exclusion may not apply to you.