

Operating Instructions • Warning Information
• Parts Breakdown



!WARNING

Some dust created by power sanding, sawing, grinding, drilling, and other construction activities contains chemicals known to cause cancer, birth defects or other reproductive harm. Some examples of these chemicals are:

- lead from lead-based paints,
- crystalline silica from bricks and cement and other masonry products, and
- arsenic and chromium from chemically-treated lumber.

Your risk from these exposures varies, depending on how often you do this type of work. To reduce your exposure to these chemicals: work in a well ventilated area, and work with approved safety equipment, such as those dust masks that are specially designed to filter out microscopic particles.

!WARNING



ALWAYS READ
INSTRUCTIONS
BEFORE USING
POWER TOOLS



ALWAYS WEAR
SAFETY
GOGGLES



WEAR HEARING
PROTECTION



AVOID
PROLONGED
EXPOSURE TO
VIBRATION

SPECIFICATIONS

Free Speed:2,600 RPM
Air Inlet: 1/4" NPT
Recommended Hose Size:3/8" I.D.
Recommended Air Pressure: 90 PSI
Air Consumption: 3.1 CFM
Length: 8.8"
Net Weight:2.2 lbs.

CAT-2PST

Pin Stripe Removal Tool

!WARNING

FAILURE TO OBSERVE THESE WARNINGS COULD RESULT IN INJURY.



THIS INSTRUCTION MANUAL CONTAINS IMPORTANT SAFETY INFORMATION.

READ THIS INSTRUCTION MANUAL CAREFULLY AND UNDERSTAND ALL INFORMATION BEFORE OPERATING THIS TOOL.

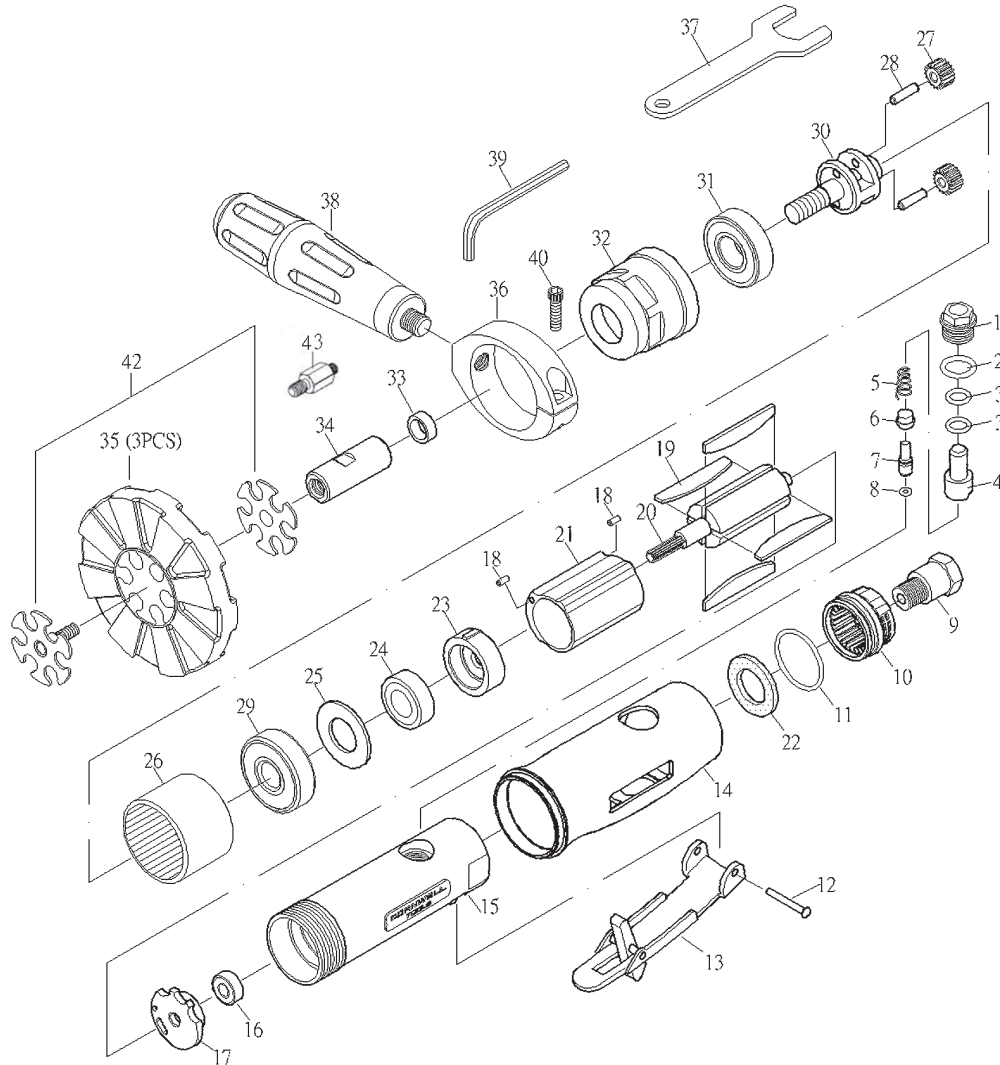
- Always operate, inspect and maintain this tool in accordance with American National Standards Institute Safety Code of Portable Air Tools (ANSI B186.1) and any other applicable safety codes and regulations.
- For safety, top performance and maximum durability of parts, operate this tool at 90 psig: 6.2 bar max air pressure with 3/8" diameter air supply hose.
- Always wear impact-resistant eye and face protection when operating or performing maintenance on this tool. Always wear hearing protection when using this tool.
- High sound levels can cause permanent hearing loss. Use hearing protection as recommended by your employer or OSHA regulation.
- Keep the tool in efficient operating condition.
- Operators and maintenance personnel must be physically able to handle the bulk, weight and power of this tool.
- Air under pressure can cause severe injury. Never direct air at yourself or others. Always turn off the air supply, drain hose of air pressure and detach tool from air supply before installing, removing or adjusting any accessory on this tool, or before performing any maintenance on this tool. Failure to do so could result in injury. Whip hoses can cause serious injury. Always check for damaged, frayed or loose hoses and fittings, and replace immediately. Do not use quick detach couplings at tool. See instructions for correct set-up.



- Air powered tools can vibrate during use. Vibration, repetitive motions or uncomfortable positions over extended periods of time may be harmful to your hands and arms. Discontinue use of tool if discomfort, tingling feeling or pain occurs. Seek medical advice before resuming use.
- Place the tool on the work before starting the tool.
- Slipping, tripping and/or falling while operating air tools can be a major cause of serious injury or death. Be aware of excess hose left on the walking or work surface.
- Keep body working stance balanced and firm. Do not overreach when operating the tool.
- Anticipate and be alert for sudden changes in motion during start up and operation of any power tool.
- Do not carry tool by the hose. Protect the hose from sharp objects and heat.
- Keep away from rotating end of tool. Do not wear jewelry or loose clothing. Secure long hair. Scalping can occur if hair is not kept away from tool and accessories. Choking can occur if neckwear is not kept away from tool and accessories.
- Do not lubricate tools with flammable or volatile liquids such as kerosene, diesel or jet fuel.
- Do not force tool beyond its rated capacity.
- Do not remove any labels. Replace any damaged labels.
- Use accessories recommended by Cornwell Tools.

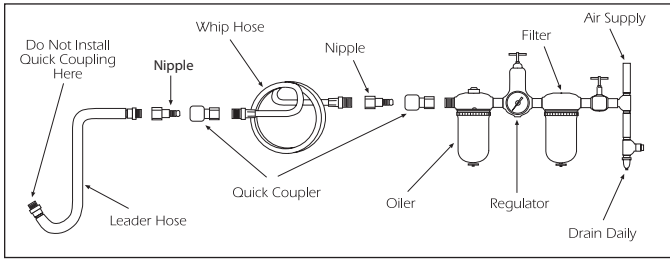


PARTS BREAKDOWN - CAT-2PST



Ref. #	Item #	DESCRIPTION	QTY	Ref #	Item#	DESCRIPTION	QTY
1	RS31501	Screw	1	24	RS30524	Bearing (608ZZ)	1
2	RS31502	O-Ring (P12)	1	25	RS31525	Washer	1
3	RS31503	O-Ring (P8)	2	26	RS31526	Gear Link (42)	1
4	RS31504	Air Regulator	1	27	RS31527	Idler Gear (18T)	2
5	RS31505	Spring	1	28	RS31528	Idler Gear Pin	2
6	RS31506	Valve Stem Bushing	1	29	RS227B25	Bearing (6001Z)	1
7	RS31507	Valve Stem	1	30	RS31530	Gear Plate	1
8	RS31508	O-Ring (3.5 x 1.4)	1	31	RS29120	Bearing (6200ZZ)	1
9	RS31509	Air Inlet	1	32	RS31532	Clamp Nut	1
10	RS31510	Exhaust Sleeve	1	33	RS31533	Washer	1
11	RS31511	O-Ring (26.7 x 1.78)	1	34	RS31534	Shaft	1
12	RS31512	Spring Pin (3 x 24)	1	35	*	Eraser Set	1
13	RS20013CW	Lever	1	36	RS31536	Handle Link	1
14	RS2PST14	Housing Cover	1	37	RS31535	Stop Spanner (14mm)	1
15	RS2PST15CW	Housing	1	38	RS60138	Handle	1
16	RS30516	Bearing (696ZZ)	1	39	RS31539	Hex Wrench	1
17	RS31517	Rear Plate	1	40	RS31540	Screw	1
18	RS31518	Pin	2	42	RS31543	Holder-Washer Set	1
19	RS31519	Rotor Blade	4	43	RS31537	Male End Adapter for 3M® pad** 1	
20	RS31520	Rotor (6T)	1	(Note: Ref. #42 is packaged with the eraser pads.)			
21	RS31521	Cylinder	1	* Replacements available as: CAT-2PST-3W - 3 pk eraser set.			
22	RS31522	Cone Muffler	1	** 3M is a registered trademark.			
23	RS31523	Front Plate	1				

Operating Instructions • Warning Information • Parts Breakdown



AIR SUPPLY

Tools of this class operate on a wide range of air pressures. It is recommended that air pressure of these tools measures 90 PSI at the tool while running free. Higher pressure (over 90 psig; 6.2 bar) raises performance beyond the rated capacity of the tool, which will shorten tool life because of faster wear and could cause injury.

Always use clean, dry air. Dust, corrosive fumes and/or water in the air line will cause damage to the tool. Drain the air tank daily. Clean the air inlet filter screen on at least a weekly schedule. The recommended hookup procedure can be viewed in the above figure.

The air inlet used for connecting air supply has standard 1/4" NPT. Line pressure should be increased to compensate for unusually long air hoses (over 25 feet). Minimum hose diameter should be 3/8" I.D. and fittings should have the same inside dimensions and be tightly secured.

OPERATION

When using the pin stripe removal tool, be careful not to exert excessive force.

The burning of the work piece or excessive speed reduction indicates too much force being applied. Changing to a free cutting tool may be better for the desired rate of speed and stock removal.

Avoid hazardous conditions by making sure there is sufficient force on the spindle of the cutting tool by placing the spindle 7/16" or more inside the collet.

LUBRICATION

Lubricate the air motor daily with quality air tool oil. If no air line oiler is used, run 1/2 oz. of oil through the tool. The oil can be squirted into the tool air inlet or into the hose at the nearest connection to the air supply, then run the tool. A rust inhibitive oil is acceptable for air tools.

WARNING: After an air tool has been lubricated, oil will discharge through the exhaust port during the first few seconds of operation. The exhaust port must be covered with a towel before applying air pressure to prevent serious injury.

WARRANTY

Cornwell warrants its air tools for a period of 1 year to the consumer. We will repair any air tool covered under this warranty which proves to be defective in material or workmanship during the warranty period. In order to have your tool repaired, return the tool to any Cornwell Authorized Warranty Center, freight prepaid. Please include a copy of your proof of purchase and a brief description of the problem. The tool will be inspected and if any part or parts are found to be defective in material or workmanship, they will be repaired free of charge and the repaired tool will be returned to you freight prepaid.

This warranty gives you specific rights. You may also have other rights which vary from state to state.

The foregoing obligation is Cornwell's sole liability under this or any implied warranty and under no circumstances shall Cornwell be liable for any incidental or consequential damages.

Note: Some states do not allow the exclusion or limitation of incidental or consequential damages, so the above limitation or exclusion may not apply to you.