

## SPECIFICATIONS

Breakaway Torque .....	600 Ft./Lbs.
Working Torque Range.....	25-350 Ft./Lbs.
Maximum Applied Torque.....	370 Ft./Lbs.
Free Speed .....	11,500 RPM
Avg. Air Consumption.....	2.5 cfm
Overall Length.....	5-3/4"
Weight .....	2.4 lbs.
Air Inlet (NPT) .....	1/4"
Recommended Hose Size.....	3/8"
Sound Level .....	93.5 dBA



## ⚠ WARNING

**RATED RPM OF THE ACCESSORY  
USED MUST EXCEED THE MAXIMUM  
TOOL RPM SHOWN**



**ALWAYS READ  
INSTRUCTIONS BEFORE  
USING POWER TOOLS**



**ALWAYS WEAR  
SAFETY GOGGLES**



**ALWAYS WEAR HEARING  
PROTECTION**



**AVOID PROLONGED  
EXPOSURE TO VIBRATION**



## ⚠ WARNING

Some dust created by power sanding, sawing, grinding, drilling, and other construction activities contains chemicals known to cause cancer, birth defects or other reproductive harm. Some examples of these chemicals are:

- lead from lead-based paints,
- crystalline silica from bricks and cement and other masonry products, and
- arsenic and chromium from chemically-treated lumber.

Your risk from these exposures varies, depending on how often you do this type of work. To reduce your exposure to these chemicals: work in a well ventilated area, and work with approved safety equipment, such as those dust masks that are specially designed to filter out microscopic particles.

# CAT2150 CAT2150G Super Duty 3/8" Dr. Composite Impact Wrench

Copyright © Professional Tool Products, 2018  
All rights reserved

# ! WARNING

## FAILURE TO OBSERVE THESE WARNINGS COULD RESULT IN INJURY



**THIS INSTRUCTION MANUAL CONTAINS IMPORTANT SAFETY INFORMATION.**

**READ THIS INSTRUCTION MANUAL CAREFULLY AND UNDERSTAND ALL INFORMATION BEFORE OPERATING THIS TOOL.**

It is the responsibility of the owner to make sure all personnel read this manual prior to using the device. It is also the responsibility of the device owner to keep this manual intact and in a convenient location for all to see and read. If the manual or product labels are lost or not legible, contact Cornwell Tools for replacements. If the operator is not fluent in English, the product and safety instructions shall be read and discussed with the operator in the operator's native language by the purchaser/owner or his designee, making sure that the operator comprehends its contents.

- Always operate, inspect and maintain this tool in accordance with American National Standards Institute Safety Code of Portable Air Tools (ANSI B186.1) and any other applicable safety codes and regulations.
- For safety, top performance and maximum durability of parts, operate this tool at 90 psig; 6.2 bar max air pressure with 3/8" diameter air supply hose.
- Always wear impact-resistant eye and face protection when operating or performing maintenance on this tool, users and bystanders.
- Always wear hearing protection when using this tool, users and bystanders. High sound levels can cause permanent hearing loss. Use hearing protection as recommended by your employer or OSHA regulation.
- Keep the tool in efficient operating condition.
- Keep tool out of reach of children.
- Operators and maintenance personnel must be physically able to handle the bulk, weight and power of this tool.
- Place the tool on the work before starting the tool.
- Air powered tools can vibrate in use. Vibration, repetitive motions or uncomfortable positions over extended periods of time may be harmful to your hands and arms. Discontinue use of tool if discomfort, tingling feeling or pain occurs. Seek medical advice before resuming use.
- Air under pressure can cause severe injury. Never direct air at yourself or others. Always turn off the air supply, drain hose of air pressure and detach tool from air supply before installing, removing or adjusting any accessory on this tool, or before performing any maintenance on this tool. Failure to do so could result in injury. Whip hoses can cause serious injury. Always check for damaged, frayed or loose hoses and fittings, and replace immediately. Do not use quick detach couplings at tool. See instructions for correct set-up.
- Slipping, tripping and/or falling while operating air tools can be a major cause of serious injury or death. Be aware of excess hose left on the walking or work surface.
- Keep body working stance balanced and firm. Do not overreach when operating the tool.
- Anticipate and be alert for sudden changes in motion during start up and operation of any power tool.
- Do not carry tool by the hose. Protect the hose from



sharp objects and heat.

- Tool shaft may continue to rotate briefly after throttle is released. Avoid direct contact with accessories during and after use. Gloves will reduce the risk of cuts or burns.
- Keep away from rotating end of tool. Do not wear jewelry or loose clothing. Secure long hair. Scalping can occur if hair is not kept away from tool and accessories. Choking can occur if neckwear is not kept away from tool and accessories.
- Note direction of rotation BEFORE operating this tool.
- **Use only impact wrench sockets and accessories on this tool. Do not use hand sockets and accessories.**
- This tool must not be used in explosive atmospheres.
- This tool is not insulated against electric shock.
- Do not lubricate tools with flammable or volatile liquids such as kerosene, diesel or jet fuel.
- Do not force tool beyond its rated capacity.
- Do not remove any labels. Replace damaged labels.
- Impact wrenches are not torque control devices. Fasteners with specific torque requirements must be checked with suitable torque measuring devices after installation with an impact wrench.
- Use replacement parts and accessories recommended by Cornwell Tools.
- Servicing and repairs should only be made by an authorized service center.
- Do not use (or modify) the tool for any other purpose than that for which it was designed without consulting the manufacturer's authorized representative.
- Failure to heed these warnings may result in serious or fatal personal injury and/or property damage.

**WARNING:** This product can expose you to chemicals including nickel, which is known to the State of California to cause cancer and birth defects or other reproductive harm. For more information go to [www.P65Warnings.ca.gov](http://www.P65Warnings.ca.gov).

## OPERATION

The forward and reverse valve can be used as an air throttle, if there are no other means of regulating air. Turn the valve knob all the way to position 3 for maximum power. The valve can be used to adjust torque to the approximate tightness of a known fastener. To set the tool to desired torque, select a nut or screw of known tightness of the same size, thread pitch and thread condition as those on the job. Turn valve to low position, apply wrench to nut and gradually increase power (turn valve to admit more air) until nut moves slightly in the direction it was originally set. The tool is now set to duplicate that tightness - note valve setting for future use. When tightening nuts not requiring critical torque values, run nut up flush and then tighten an additional one-quarter to one-half turn (slight additional turning is necessary if gaskets are being clamped). For additional power needed on disassembly work, turn valve to its fully open position.

This impact wrench is rated at 3/4" SAE bolt size. Rating must be down graded for spring U bolts, tie bolts, long cap screws, double depth fasteners, badly rusted conditions and spring fasteners as they absorb much of the impact power. When possible, clamp or wedge the bolt to prevent springback.

Soak rusted fasteners in penetrating oil and break rust seal before removing with impact wrench. If fasteners does not start to move in three to five seconds, use a larger size impact wrench. Do not use impact wrench beyond rated capacity as this will drastically reduce tool life.

The forward and reverse valve is used to change the direction of the tool. When the valve is out, the tool is in a forward or right hand direction. When the valve is pushed in, the direction is reverse or left hand.

**NOTE:** Actual torque on a fastener is directly related to joint hardness, tool speed, condition of socket and the time the tool is allowed to impact. Use the simplest possible tool-to-socket hook up. Every connection absorbs energy and reduces power.

## AIR SUPPLY

Tools of this class operate on a wide range of air pressures. It is recommended that air pressure measures 90 psig at the tool with the trigger fully depressed and no load applied to the tool. Higher pressure and unclean air will shorten tool life and may create a hazardous condition.

Water in the air line will cause damage to the tool. Drain water from air lines and compressor prior to running tool. Clean the air inlet filter screen weekly. The recommended hook-up procedure can be viewed in Figure 1.

The air inlet (Figure 2), used for connecting air supply, has standard 1/4" NPT American Thread.

Line pressure should be increased to compensate for unusually long air hoses (over 25 feet). Minimum hose diameter should be 3/8" I.D. and fittings should have the same inside dimensions.

Ensure an accessible emergency shut off valve has been installed in the air supply line and make others aware of its location.

## WARNING

Always turn off the air supply, drain hose of air pressure and detach tool from air supply before installing, removing or adjusting any part or accessory on this tool, or before performing any maintenance on this tool.

## TROUBLESHOOTING

Other factors outside the tool may cause loss of power or erratic action. Reduced compressor output, excessive drain on the air line, moisture or restrictions in air pipes or the use of hose connections of improper size or poor conditions may reduce air supply. If outside conditions are in order, and the tool still performs erratically, disconnect tool from hose and take tool to your nearest Cornwell authorized service center.

## LUBRICATION & MAINTENANCE

Lubricate the air motor daily with high quality air tool oil. If no air line oiler is used, run 1/2 oz. of oil through the tool. The oil can be squirted into the tool air inlet or into the hose at the nearest connection to the air supply, then run the tool. A rust inhibitive oil is acceptable for air tools.

## WARNING

After an air tool has been lubricated, oil will discharge through the exhaust port during the first few seconds of operation. The exhaust port must be covered with a towel before applying air pressure to prevent serious injury.

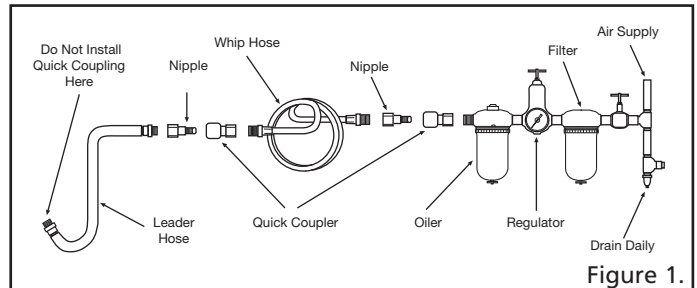


Figure 1.

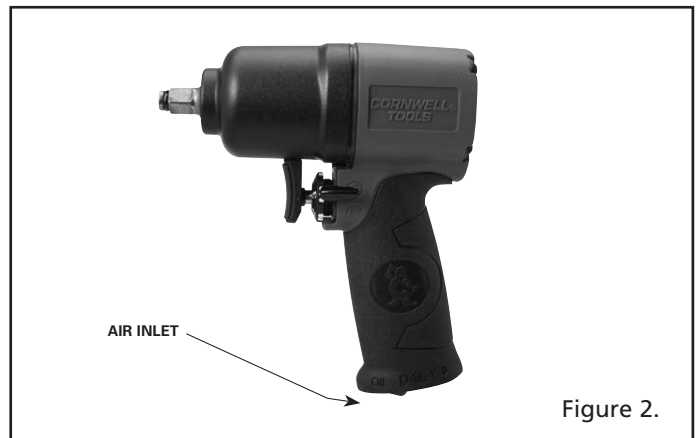


Figure 2.

# WARRANTY

Cornwell Quality Tools Company ("Cornwell") warrants this product against defects in material and workmanship for a period of TWO (2) YEARS from the date of original retail purchase. Subject to the conditions and limitations set forth below, Cornwell will, at its option, either repair or replace any part of the product(s) that proves defective by reason of improper workmanship or materials.

This warranty does not cover any damage to this product that results from accident, abuse, misuse, natural or personal disaster, or any unauthorized disassembly, repair, or modification. Repairs, disassembly and modification are only authorized to be made by Cornwell or a Cornwell Authorized Warranty Center.

## WARRANTY SERVICE

In order to have your tool repaired, return the tool to any Cornwell Authorized Warranty Center, freight prepaid. Please include a copy of your proof of purchase and a brief description of the problem. The tool will be inspected and if any part or parts are found to be defective in material or workmanship, they will be repaired free of charge, and the repaired tool will be returned to you freight prepaid.

## EXCLUSIONS AND LIMITATIONS

THIS WARRANTY AND THE REMEDIES SET FORTH ABOVE ARE EXCLUSIVE AND IN LIEU OF ALL OTHER WARRANTIES, REMEDIES AND CONDITIONS, WHETHER ORAL OR WRITTEN, EXPRESS OR IMPLIED. CORNWELL SPECIFICALLY DISCLAIMS ANY AND ALL IMPLIED WARRANTIES, INCLUDING, TO THE EXTENT PERMITTED BY APPLICABLE LAW, ANY WARRANTIES OF MERCHANTABILITY AND FITNESS FOR A PARTICULAR PURPOSE. IF CORNWELL CANNOT LAWFULLY DISCLAIM IMPLIED WARRANTIES UNDER THIS LIMITED WARRANTY, ALL SUCH IMPLIED WARRANTIES ARE LIMITED IN DURATION TO THE DURATION OF THIS WARRANTY.

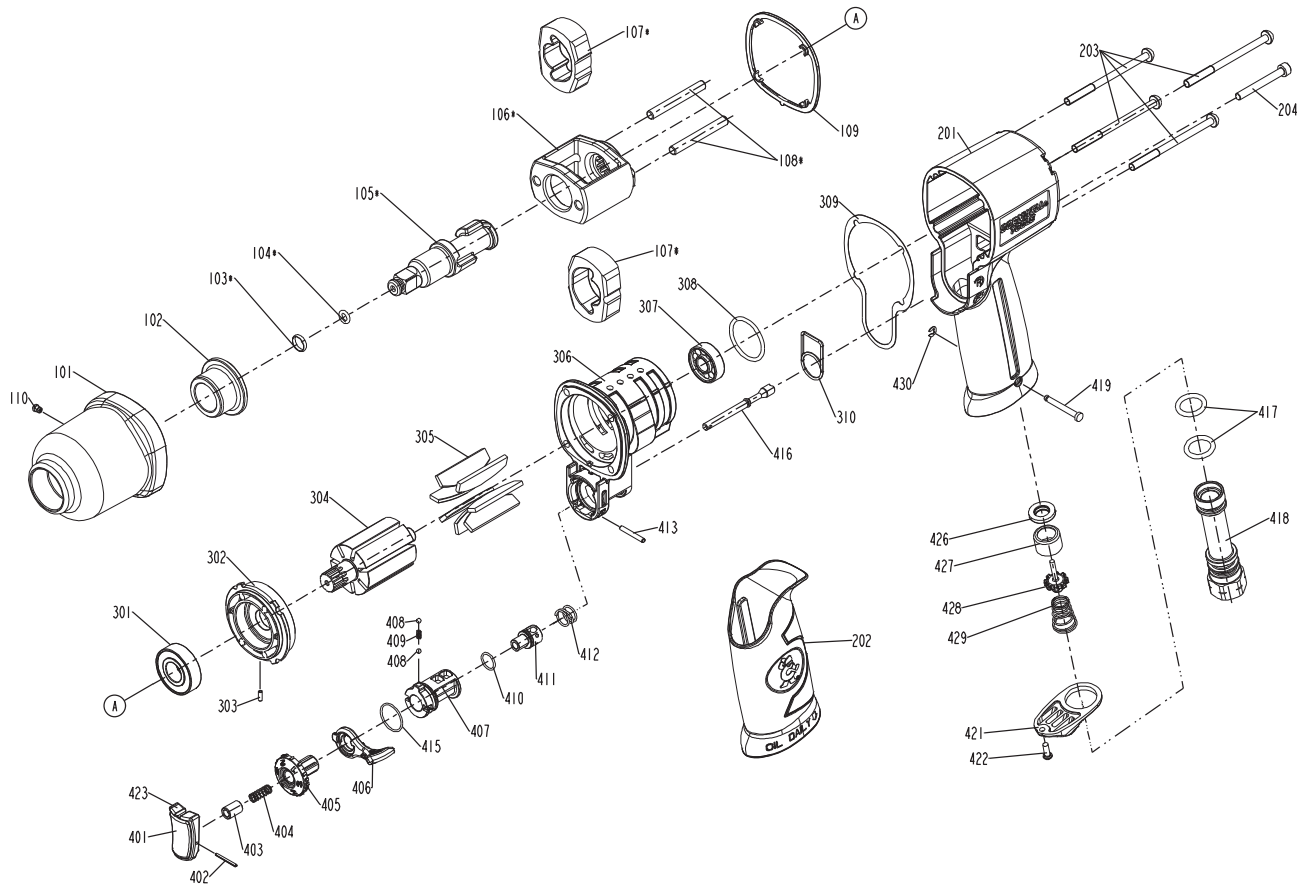
IN NO EVENT SHALL CORNWELL BE LIABLE TO THE PURCHASER OR TO THE USER OF A CORNWELL PRODUCT FOR ANY SPECIAL, INCIDENTAL OR CONSEQUENTIAL DAMAGES BASED UPON BREACH OF WARRANTY, BREACH OF CONTRACT, NEGLIGENCE, TORT, OR ANY OTHER LEGAL THEORY. SUCH DAMAGES INCLUDE, WITHOUT LIMITATION, EXPENSES, LOST REVENUES, LOST SAVINGS, LOST PROFITS, OR ANY OTHER INCIDENTAL OR CONSEQUENTIAL DAMAGES ARISING FROM THE PURCHASE, USE OR INABILITY TO USE THE CORNWELL PRODUCT.

Some states do not allow the exclusion or limitation of incidental or consequential damages or exclusions or limitation on the duration of implied warranties or conditions, so the above limitations or exclusions may not apply to you. This warranty gives you specific legal rights, and you may also have other rights that vary by state.

Repair kits and replacement parts are available for many Cornwell products, regardless of whether or not the product is still covered by a warranty plan.

Cornwell Quality Tools Company  
667 Seville Road • Wadsworth, OH 44281-1094

# PARTS BREAKDOWN - CAT2150 / CAT2150G



ITEM	PART NO	PART NAME	QTY	ITEM	PART NO	PART NAME	QTY
101	RS2125101	HAMMER CASE		401	RS2125401	TRIGGER A	1
102	RS1081103	HAMMER CASE BUSHING	1	402	RS2125402	SPRING PIN	1
103	RS1734201	SOCKET RETAINER	1	403	RS3125403	TRIGGER BUSHING	1
104	RS2150104A	O-RING	1	404	RS4150405	PUSHER SPRING	1
105	RS1081106A	ANVIL ASSEMBLY (incl #103 & 104)	1	405	RS2125405	REGULATOR A	1
106	RS1081109	HAMMER FRAME	1	406	RS4135407	LEVER	1
107	RS2150107	HAMMER	2	407	RS2125407	REVERSE VALVE	1
108	RS1081107	HAMMER FRAME PIN	2	408	RS1735313	BALL (2.5MM)	2
109	RS2125109	PACKING	1	409	RS1077410	SPRING	1
110	RS1837220	HAMMER CASE GREASE FITTING	1	410	RS1734414	O-RING	1
201	RS2150201	HOUSING - BLUE	1	411	RS2125411	REGULATOR	1
201	RS2150201G	HOUSING - GREEN	1	412	RS2125412	SPRING	1
202	RS4150202	HANDLE GRIP	1	413	RS1837309	SPRING PIN	1
203	RS2125203	HALF ROUND HD. HEX.BOLT	4	415	RS2125415	O-RING	1
204	RS2125204	HEX. SOC. HD. BOLT	1	416	RS4150417	TRIGGER TIP	1
301	RS227B25	BEARING (6001ZZ)	1	417	RS1735410	O-RING	2
302	RS2125302	FRONT BEARING PLATE	1	418	RS2125418	AIR INLET	1
303	RS2125303	SPRING PIN	1	419	RS4150420	LATCH PIN	1
304	RS2125304	ROTOR	1	421	RS1735408	EXHAUST DEFLECTOR	1
305	RS1081305	ROTOR BLADES	7	422	RS1735411	TAP BOLT	1
306	RS2125306	CYLINDER UNIT	1	423	RS2125423	TRIGGER B	1
307	RS30524	BEARING (608ZZ)	1	426	RS1735403	SEAL	1
308	RS2125308	O-RING	1	427	RS1735404	BUSHING	1
309	RS2125309	WASHER	1	428	RS1735405	TIP VALVE	1
310	RS2125310	PACKING-CYLINDER	1	429	RS4150428	SPRING	1
				430	RS4150424	E-RING	1
					RSCAT2150PLK	PRODUCT LABEL KIT FOR CAT2150	1
					RSCAT2150GPLK	PRODUCT LABEL KIT FOR CAT2150G	1

(Not Shown) - Tune-up kit, RS2150TK, including: 103, 104, 109, 305(7), 308, 309, 310, 410, 415, 417 (2), and 426.