



## ! WARNING

Some dust created by power sanding, sawing, grinding, drilling, and other construction activities contains chemicals known to cause cancer, birth defects or other reproductive harm. Some examples of these chemicals are:

- lead from lead-based paints,
- crystalline silica from bricks and cement and other masonry products, and
- arsenic and chromium from chemically-treated lumber.

Your risk from these exposures varies, depending on how often you do this type of work. To reduce your exposure to these chemicals: work in a well ventilated area, and work with approved safety equipment, such as those dust masks that are specially designed to filter out microscopic particles.

## ! WARNING



ALWAYS READ  
INSTRUCTIONS  
BEFORE USING  
POWER TOOLS



ALWAYS WEAR  
SAFETY GOGGLES



WEAR HEARING  
PROTECTION



AVOID  
PROLONGED  
EXPOSURE TO  
VIBRATION

## SPECIFICATIONS

Punch Hole Size	.8MM
Air Inlet	1/4 NPT
Hose Size	3/8" I.D.
Air Pressure	.90 PSI
Air Consumption	.4 CFM
Length	10"
Net Weight	3-1/2 Lbs.

# CAT-100PFT

## 8MM Punch Flange Tool

## WARNING - FOLLOW THESE RULES FOR SAFE OPERATION!

This Instruction Manual Contains Important Safety Information.



Read THIS INSTRUCTION MANUAL Carefully and understand ALL INFORMATION Before Operating This Tool.

- Always operate, inspect and maintain this tool in accordance with American National Standards Institute Safety Code of Portable Air Tools (ANSI B186.1) and any other applicable safety codes and regulations.
- For safety, top performance and maximum durability of parts, operate this tool at 90 psig 6.2 bar max air pressure with 3/8" diameter air supply hose.



- Always wear impact-resistant eye and face protection when operating or performing maintenance on this tool. Always wear hearing protection when using this tool.



- High sound levels can cause permanent hearing loss. Use hearing protection as recommended by your employer or OSHA regulation.
- Keep the tool in efficient operating condition.
- Operators and maintenance personnel must be physically able to handle the bulk, weight and power of this tool.



- Air under pressure can cause severe injury. Never direct air at yourself or others. Always turn off the air supply, drain hose of air pressure and detach tool from air supply before installing, removing or adjusting any accessory on this tool, or before performing maintenance on this tool. Failure to do so could result in injury. Whip hoses can cause serious injury. Always check for damaged, frayed or loose hoses and fittings, and replace immediately. Do not use quick detach couplings at tool. See instructions for correct set-up.



- Air powered tools can vibrate in use. Vibration, repetitive motions or uncomfortable positions over extended periods of time may be harmful to your hands and arms. Discontinue use of tool if discomfort, tingling feeling or pain occurs. Seek medical advice before resuming use.



- Place the tool on the work before starting the tool.
- Slipping, tripping and/or falling while operating air tools can be a major cause of serious injury or death. Be aware of excess hose left on the walking or work surface.
- Keep body working stance balanced and firm. Do not overreach when operating the tool.
- Anticipate and be alert for sudden changes in motion during start up and operation of any power tool.



- Do not carry tool by the hose. Protect the hose from sharp objects and heat.
- Keep away from rotating end of tool. Do not wear jewelry or loose clothing. Secure long hair. Scalping can occur if hair is not kept away from tool and accessories. Choking can occur if neckwear is not kept away from tool and accessories.
- Do not lubricate tools with flammable or volatile liquids such as kerosene, diesel or jet fuel.
- Don't force tool beyond its rated capacity.
- Do not remove any labels. Replace damaged labels.

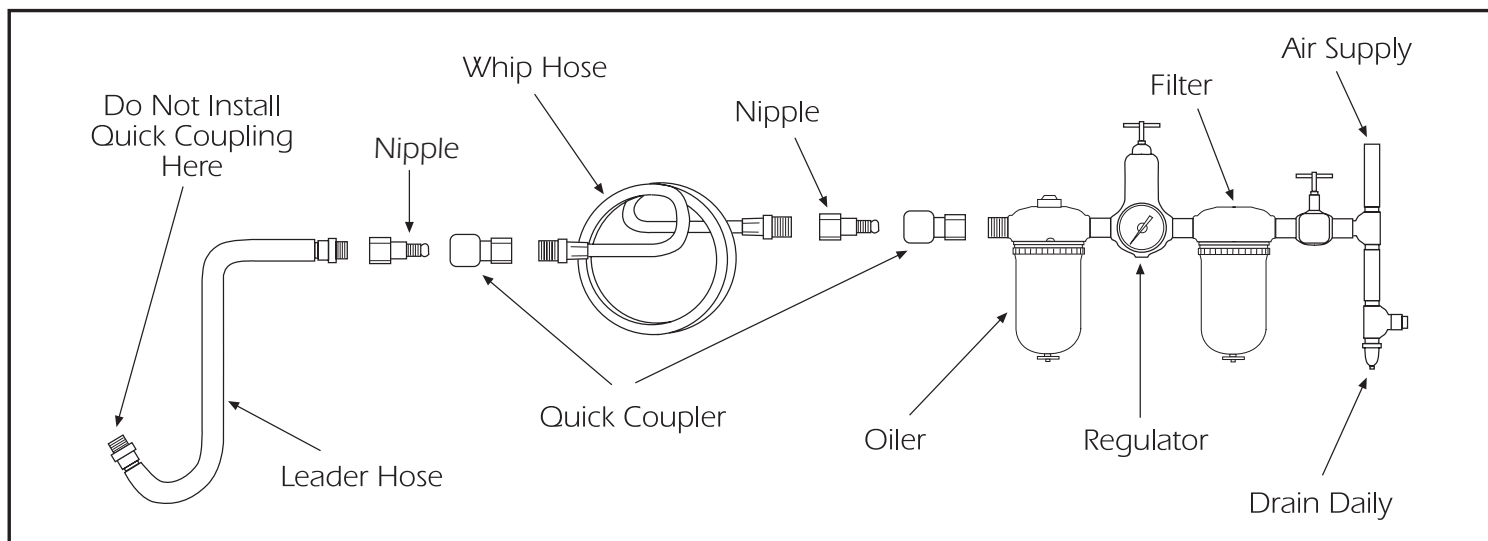


Figure 1

## AIR SUPPLY

Tools of this class operate on a wide range of air pressures. It is recommended that air pressure of these tools measure 90 PSI at the tool while running free. Higher pressure and unclean air will shorten the tool's life because of faster wear and may create a hazardous condition.

Water in the air line will cause damage to the tool. Drain the air tank daily. Clean the air inlet filter screen on at least a weekly schedule. The recommended hook-up procedure can be viewed in Figure 1.

The air inlet used for connecting air supply has standard 1/4" NPT American Thread.

Line pressure should be increased to compensate for unusually long air hoses (over 25 feet). Minimum hose diameter should be 1/4" I.D. and fittings should have the same inside dimensions

## LUBRICATION

Lubricate the tool daily with a quality grade of air tool oil. If no air line oiler is used, run a teaspoon of oil through the tool. The oil can be squirted into the tool air inlet or into the hose at the nearest connection to the air supply, then run the tool. A rust inhibitive oil is acceptable for air tools.

## WARRANTY

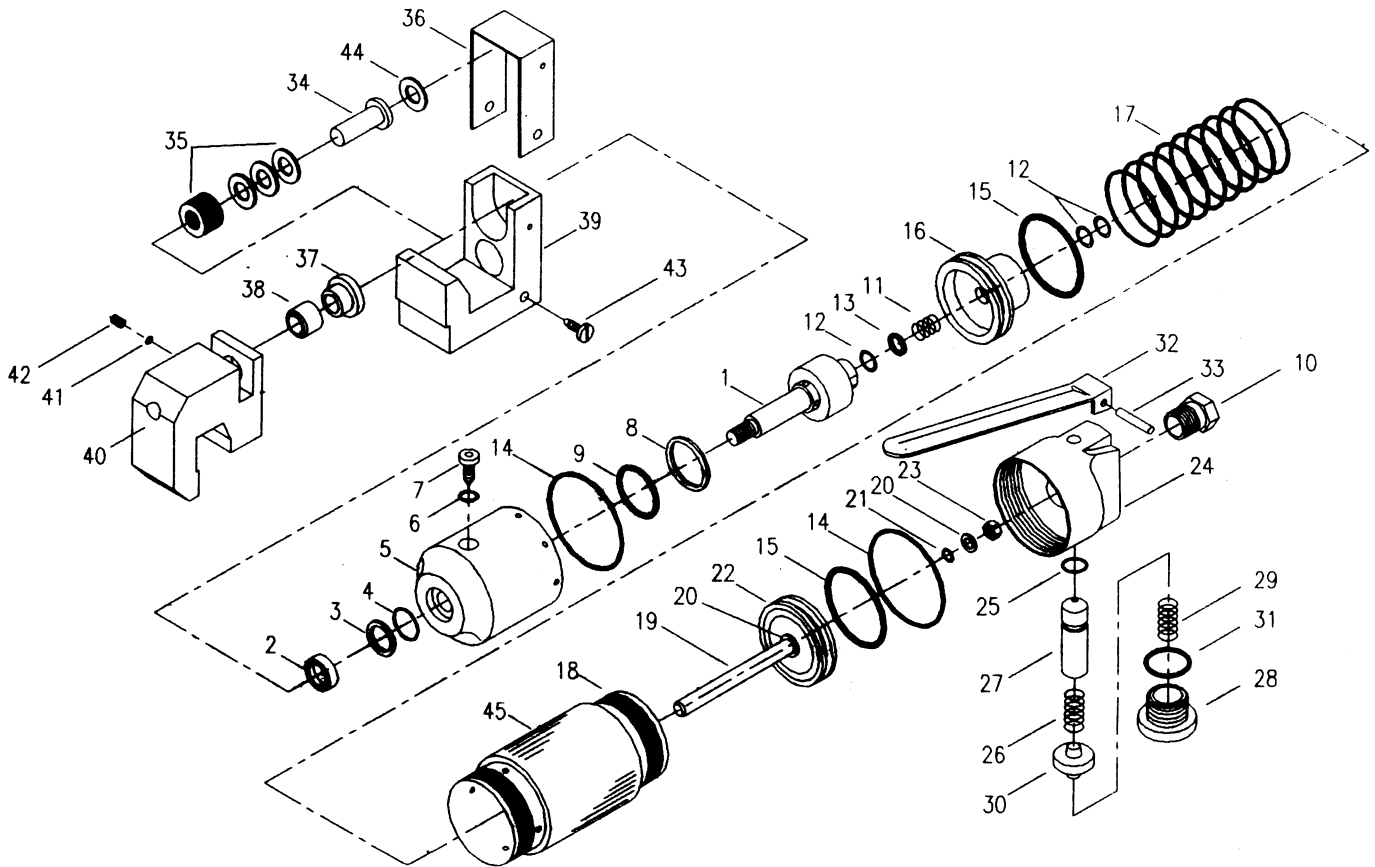
Cornwell warrants its air tools for a period of 1 year to the consumer. We will repair any air tool covered under this warranty which proves to be defective in material or workmanship during the warranty period. In order to have your tool repaired, return the tool to any Cornwell Authorized Warranty Center, freight prepaid. Please include a copy of your proof of purchase and a brief description of the problem. The tool will be inspected and if any part or parts are found to be defective in material or workmanship, they will be repaired free of charge and the repaired tool will be returned to you freight prepaid.

This warranty gives you specific rights. You may also have other rights which vary from state to state.

The foregoing obligation is Cornwell's sole liability under this or any implied warranty and under no circumstances shall Cornwell be liable for any incidental or consequential damages.

Note: Some states do not allow the exclusion or limitation of incidental or consequential damages so the above limitation or exclusion may not apply to you.

# PARTS BREAKDOWN - CAT-100PFT



Ref. #	Item #	DESCRIPTION	QTY	Ref. #	Item #	DESCRIPTION	QTY
1	83701A	Piston	1	24	83724	Air Valve Body	1
2	83702	Packing	1	25	83725	O-Ring	1
3	83703	Back-Up Ring	1	26	83726	Spring	1
4	83704	O-Ring	1	27	83727	Air Valve	1
5	83705	Cylinder	1	28	83728	Plug	1
6	83706	O-Ring	1	29	83729	Spring	1
7	83707	Oil Plug	1	30	83730	Valve Cover	1
8	83708	Back-Up Ring	1	31	83731	O-Ring	1
9	83709	O-Ring	1	32	83732	Trigger	1
10	83710	Air Inlet	1	33	83733	Pin	1
11	83711	Spring	1	34	83734A	Punch	1
12	83712	O-Ring	3	35	278CSS	Cup Spring Set	1
13	83713	Back-Up Ring	1	36	83736A	Cover	1
14	83714	O-Ring	2	37	83737A	Guide Sleeve	1
15	83715	O-Ring	2	38	83738A	Punching Die	1
16	83716	Piston	1	39	83739A	Anvil Bed	1
17	83717	Spring	1	40	83740A	Punching Die Bed	1
18	83718	Cylinder	1	41	83741	Packing	1
19	83719	Piston Rod	1	42	83742	Screw	1
20	83720	Washer	2	43	83743	Screw	1
21	83721	O-Ring	1	44	83744A	Washer	1
22	83722	Piston	1	45	83745B	Blue Plastic Wrap	1
23	83723	Lock Nut	1				