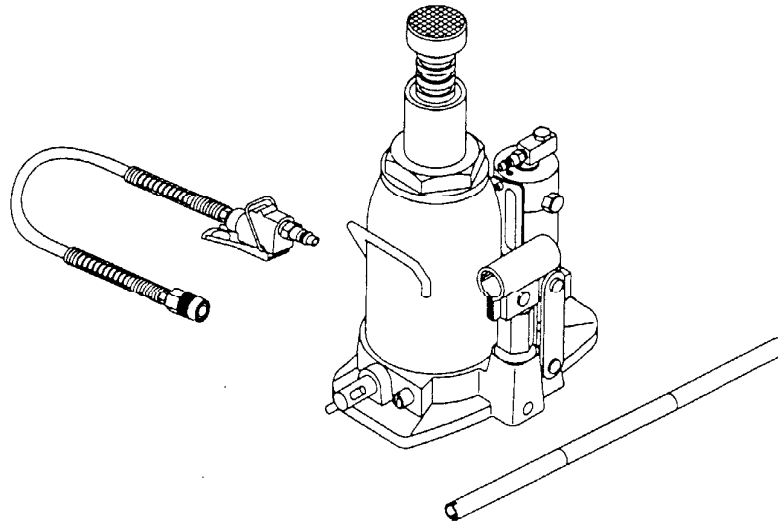


12 TON CAPACITY

40609

AIR MANUAL HYDRAULIC BOTTLE JACK



OPERATING INSTRUCTION

1. Purge air from system with jack all the way down and in the upright position. Open release valve and operate by pumping manually several times.
2. Connect air hose to jack and firmly close the release valve by turning clockwise and pressing air control valve.
3. The jack may also be operated manually by pumping the jack handle.
4. Slowly open release valve turning the release valve counterclockwise.
5. Open release valve by turning release valve counterclockwise and allow jack to fully retract.
6. Close release valve by turning clockwise.

MAINTENANCE

1. Clean dirt from around filler plug and remove filler plug from hydraulic unit assembly.
2. Fill hydraulic reservoir with clean hydraulic oil to a level that just covers the hydraulic cylinder visible through the filler hole. **DO NOT OVERFILL**
3. Reinstall filler plug in hydraulic unit assembly.



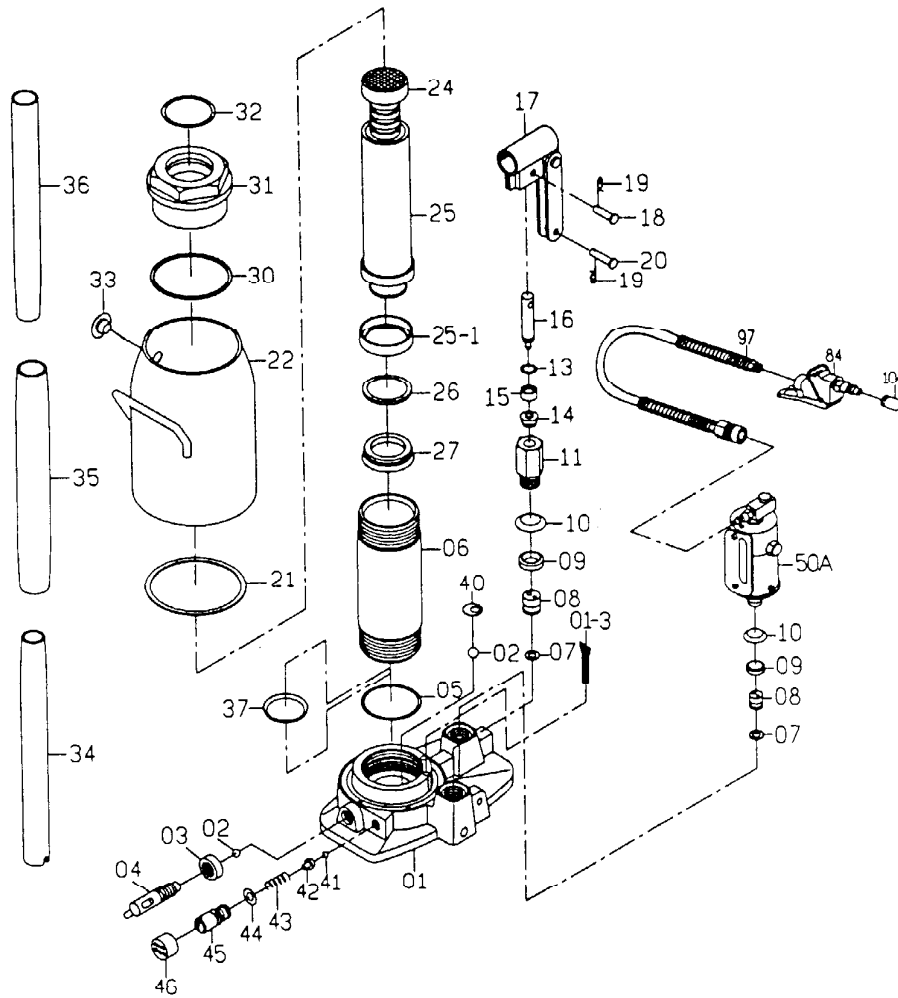
WARNING



For Your Safety & to Prevent Injury

1. This jack is designed for lifting purposes only.
2. After lifting vehicle, always use safety stands to support the load before repairing. Never be under vehicle to place stands.
3. Do not overload this jack beyond the rated capacity.
4. Set parking brakes and block tires.
5. Use jack only on hard level surface.
6. Center load on the saddle and be sure the setup is stable.
7. Lower vehicle slowly.
8. Do not exceed 100psi (operating pressure 70-100psi).
9. Do not use brake or transmission fluids.
10. Owner and/or operator should have an understanding of all operating instructions and warnings before operating the jack.
11. Fail to heed these warnings may result in personal injury and/or property damage.

12 TON AIR/MANUAL HYDRAULIC BOTTLE JACK



PART NO	DESCRIPTION	Q'TY	PART NO	DESCRIPTION	Q'TY
01	BASE	1	25	RAM	1
01-3	FILTER	1	26	CAP WASHER	1
02	STEEL BALL 1/4"	2	27	U-CUP SEAL	1
03	SEAL	1	30	SEAL	1
04	RELEASE VALVE	1	31	TOP NUT	1
05	RING	1	32	RING	1
06	CYLINDER	2	33	PLUG	1
07	WASHER	2	34	HANDLE	1
08	CHECK VALVE KIT	2	35	HANDLE	1
09	SEAL	2	36	HANDLE	1
10	CAP WASHER	1	37	U-CUP RING	1
11	PUMP CYLINDER	1	40	WASHER	1
14	CUP SEAL	1	41	STEEL 3/16"	1
15	RING	1	42	SPRING COP	1
16	PUMP PLUNGER	1	43	SPRING	1
17	HANDLE SOCKET ASSEMBLY	1	44	RING	1
18	PIN	1	45	SETTING BALL	1
19	COTTER PIN	2	46	CAP	1
20	PIN	1	50A	AIR PUMP SET	1
21	SEAL	1	84	AIR SWITCH	1
22	OIL RESERVOIR	1	97	HOSE	1
24	EXTENSION SCREW	1	100	DUST CAP	1