



HYDRAULIC WHEEL DOLLY SET OF TWO

Model 94682

Assembly and Operating Instructions



3491 Mission Oaks Blvd., Camarillo, CA 93011
Visit our Web site at <http://www.harborfreight.com>

Copyright© 2006 by Harbor Freight Tools®. All rights reserved. No portion of this manual or any artwork contained herein may be reproduced in any shape or form without the express written consent of Harbor Freight Tools.

For technical questions and replacement parts, please call 1-800-444-3353.

SPECIFICATIONS

Capacity Of Each Hydraulic Wheel Dolly	1,500 lb. Weight Capacity Per Dolly, Each Dolly Fits Tires Up to 10" Wide
Construction	All Steel Construction, Aluminum Rollers, Rubber O-rings
Castor Dimensions	4" Diameter x 1-3/8" Wide x 4-3/4" Total Height
Roller Dimensions	10-5/8" Long x 2-3/4" Diameter x 4-3/8" Total Height
Distance Between Rollers	9-7/8" Minimum to 20-3/4" Maximum
Roller Locking Width	10"
Ram Travel	10-7/8"
Ram Diameter	15/16"
Weight Per Wheel Dolly	40.7 lb.

SAVE THIS INSTRUCTION MANUAL

You will need this instruction manual for the safety warnings and precautions, inspection, maintenance, and cleaning procedures. Keep your invoice with this instruction manual. Write the invoice number on the front page. Keep this instruction manual and invoice in a safe and dry location for future reference.

UNPACKING

When unpacking, check to make sure the parts shown on this instruction manual are included. If any parts are missing or broken, please call Harbor Freight Tools at the telephone number shown on the front page of this manual.

GENERAL SAFETY WARNINGS AND PRECAUTIONS

1. **KEEP WORK AREA CLEAN AND DRY.** Cluttered, damp or wet work areas invite injuries.
2. **USE EYE PROTECTION.** Wear ANSI approved safety impact eye glasses when using this product. ANSI approved safety impact eye glasses are available from Harbor Freight Tools.
3. **DO NOT ALLOW CHILDREN IN THE WORK AREA.** Keep away from children. Do not allow children to play with this product.
4. **CHECK FOR DAMAGED PARTS.** Before using this product, carefully check that it will operate properly and perform its intended function. Check for damaged parts and any other conditions that may affect the operation of this product. Replace or repair damaged or worn parts immediately.
5. **REPLACEMENT PARTS AND ACCESSORIES.** When servicing, use only identical replacement parts.
6. **MAINTAIN THIS PRODUCT WITH CARE.** Keep this product clean and dry for better performance.
7. **USE THE RIGHT PRODUCT FOR THE RIGHT JOB.** There are certain applications for which this product was designed. Do not use small equipment, tools or attachments to do the work of larger industrial equipment, tools or attachments. Do not use this product for a purpose for which it was not intended.

8. **Vehicle's engine must be turned off and parking brake must be set before jacking up the vehicle.** Keep spectators clear of the area. Never allow people in the vehicle while vehicle is being lifted or moved.
9. **Never work underneath the vehicle while vehicle is resting on Wheel Dollies.**

WARNING: The warnings, cautions, and instructions discussed in this instruction manual cannot cover all possible conditions and situations that may occur. It must be understood by the operator that common sense and caution are factors which cannot be built into this product, but must be supplied by the operator.

APPLICATION

Use four of the Wheel Dollies to efficiently maneuver a parked vehicle in tight spaces. Designed to fit most cars and lightweight trucks. A vehicle resting on four of the Vehicle Dollies can be pushed forward, backward and even sideways.

ASSEMBLY

NOTE: Turn to the Parts list and Assembly diagram on page 7 for help identifying the parts mentioned below.

1. There are two Rod Assemblies (3) for each Wheel Dolly. One needs to be attached to the Outer Body & Axle Assembly (13), the other one should be attached to the Inner Body & Axle Assembly (8).
2. Insert the Roller Raceway (5) into the Roller (6), then press the Rod Assembly (3) into the Outer Body Assembly (13). Use the Washer (10), the Lock Washer (11) and secure it in place using a wrench. Attach the other Rod Assembly (3) to the Inner Body & Axle Assembly using the same hardware and process.

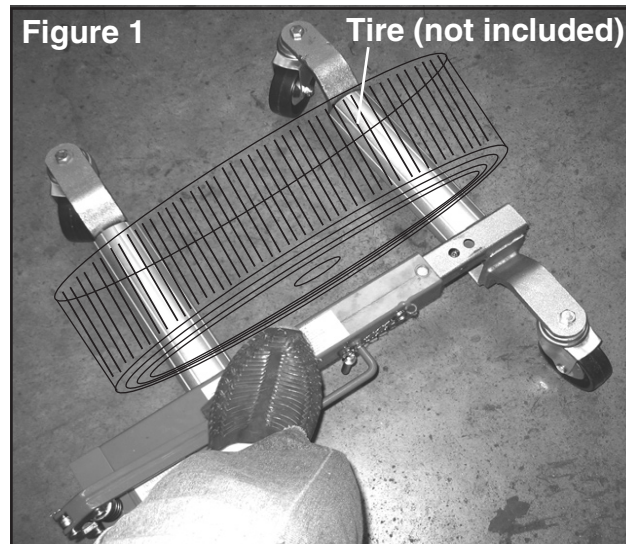
WARNING: Make sure all the hardware is tight before you use the Wheel Dolly. Also test each Wheel Dolly before using it.

OPERATION

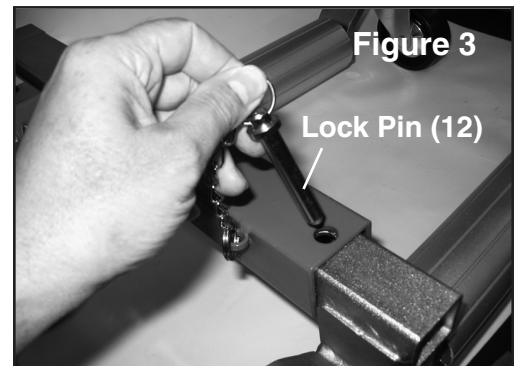
WARNING: Before operating the Wheel Dolly read the bleeding instructions on page 5.

WARNING: Check the oil level before operating the Wheel Dolly.

1. First expand the space between the Rollers (6). Turn the Release Valve (26) counterclockwise and spread the Rollers (6) apart from each other (see Figure 2). After Pulling the Rollers (6) apart, turn the Release Valve (26) all the way clockwise. Next slide the Wheel Dolly around the tire (as shown in Figure 1).



2. To raise the tire, put your foot on top of the Foot Pedal (17) and press it up and down. The Rollers (6) will move together and lift the tire off the ground. After raising the tire, insert the Lock Pin (12) in the hole in the Outer Body & Axle Assembly (13) (as shown in Figure 3).



NOTE: The Rollers (6) will not move together when you Press up and down on the Foot Pedal (17) unless the Release Valve is turned completely clockwise (see Figure 2).

3. To lower the tire, turn the Release Valve (26) counter-counterclockwise. The weight of the tire will spread the Roller (6) apart, allowing you to pull the Wheel Dolly away from the tire.

WARNING: Do not turn the Release Valve (26) completely clockwise; doing so will remove it allowing oil to spill out.

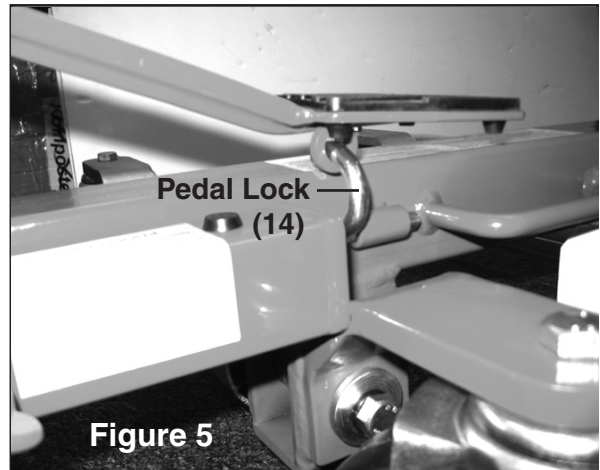
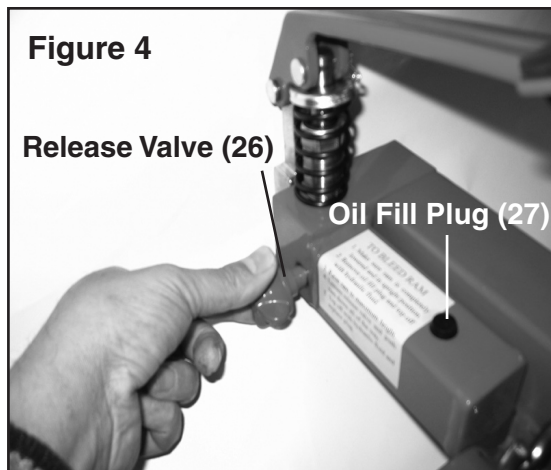
LOCKING DOWN THE FOOT PEDAL

Press the Foot pedal all the way down, then swing the Pedal Lock Assembly (14) up and into the hole on the bottom of the foot pedal (see Figure 5).

BLEEDING INSTRUCTIONS

The hydraulic system can take in air; when this happens the Hydraulic Wheel Dolly will work poorly or not at all. Follow the steps below to fix this problem.

1. Turn the Release Valve (26) 1/2 revolution counterclockwise and spread the Rollers (6) apart as far as they will go.
2. Remove the Oil Fill Plug (27)
3. Press up and down on the Foot Pedal (17) about ten times quickly. This will purge the air from the hydraulic system.
4. Top off with quality hydraulic fluid if it is too low, and replace the Oil Fill Plug (27).

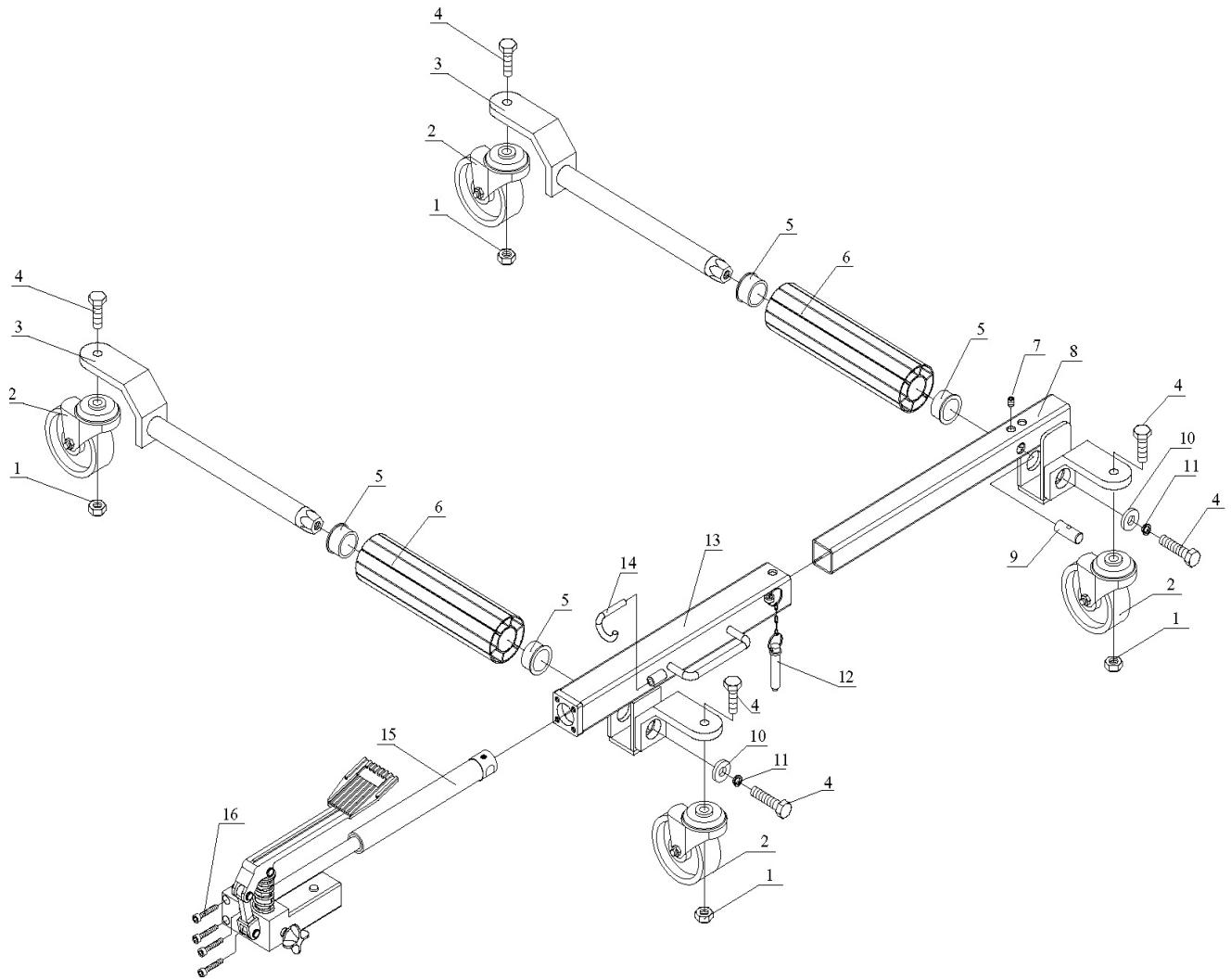


INSPECTION, MAINTENANCE, AND CLEANING

1. Before each use, inspect the general condition of the Wheel Dolly. Check for cracking, bending, wheel damage, and any other condition that may affect safe operation. If a problem occurs with the Dolly, immediately discontinue its use; never use a damaged Wheel Dolly.
2. To clean, wipe with a damp cloth. You may use a mild detergent.

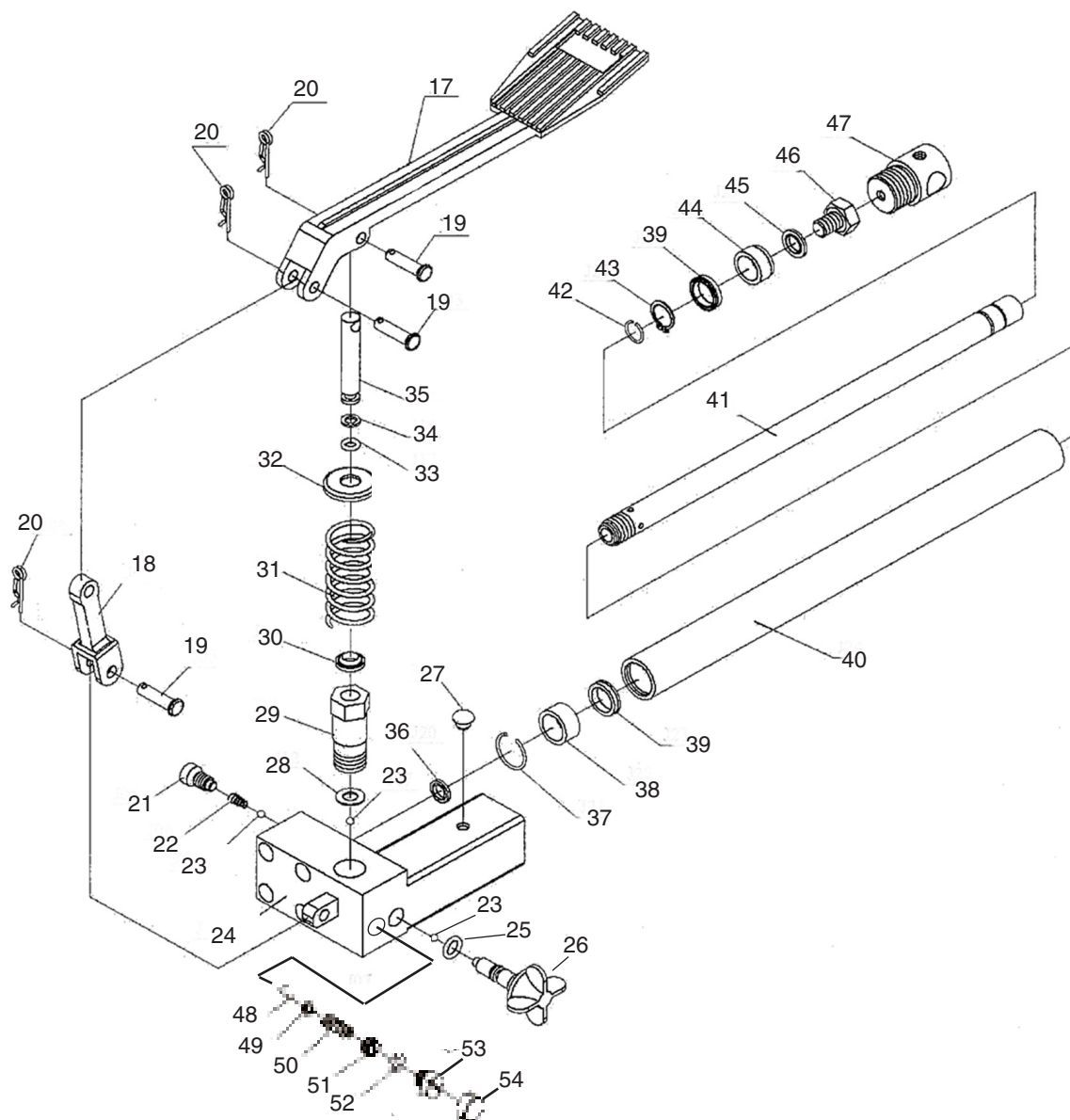
PLEASE READ THE FOLLOWING CAREFULLY

THE MANUFACTURER AND/OR DISTRIBUTOR HAS PROVIDED THE PARTS DIAGRAM IN THIS MANUAL AS A REFERENCE TOOL ONLY. NEITHER THE MANUFACTURER NOR DISTRIBUTOR MAKES ANY REPRESENTATION OR WARRANTY OF ANY KIND TO THE BUYER THAT HE OR SHE IS QUALIFIED TO MAKE ANY REPAIRS TO THE PRODUCT OR THAT HE OR SHE IS QUALIFIED TO REPLACE ANY PARTS OF THE PRODUCT. IN FACT, THE MANUFACTURER AND/OR DISTRIBUTOR EXPRESSLY STATES THAT ALL REPAIRS AND PARTS REPLACEMENTS SHOULD BE UNDERTAKEN BY CERTIFIED AND LICENSED TECHNICIANS AND NOT BY THE BUYER. THE BUYER ASSUMES ALL RISK AND LIABILITY ARISING OUT OF HIS OR HER REPAIRS TO THE ORIGINAL PRODUCT OR REPLACEMENT PARTS THERETO, OR ARISING OUT OF HIS OR HER INSTALLATION OF REPLACEMENT PARTS THERETO.

PARTS LIST AND ASSEMBLY DIAGRAM

Part	Description	Qty
1	Lock Nut	4
2	Caster	4
3	Rod Assembly	2
4	Bolt	6
5	Roller Raceway (nylon)	4
6	Roller (aluminum)	2
7	Screw	1
8	Inner Body & Axle Assembly	1
9	Pin	1
10	Washer	2
11	Lock Washer	2
12	Lock Pin	1
13	Outer Body & Axle Assembly	1
14	Pedal Lock Assembly	1
15	Complete Hydraulic Jack (includes parts 18-55)	1
16	Hex bolt	4
17	Foot Pedal	1

NOTE: Some parts are listed and shown for illustration purposes only and are not available individually as replacement parts.

HYDRAULIC JACK PARTS LIST AND ASSEMBLY DIAGRAM

NOTE: Part numbers 25, 28, 33, 34, 36, 39, 45 and 52 are only available by ordering the Seal Kit part # 55.

Part	Description	Qty
18	Connector	1
19	Pin	3
20	R-pin	3
21	Screw	1
22	Spring	1
23	Ball	1
24	Pump Body	3
25*	O -ring	1
26	Release valve	1
27	Oil Plug	1
28*	Nylon Ring	1
29	Pump Cylinder	1
30	Dust Cover	1
31	Spring	1
32	Spring Cover	1
33*	O -ring	1
34*	Nylon Ring	1
35	Piston	1
36*	Seal Ring	1

Part	Description	Qty
37	Circlip	1
38	Bushing	1
39*	Seal Ring	2
40	Cylinder	1
41	Ram	1
42	Circlip	1
43	Circlip	1
44	Bushing	1
45*	Seal Ring	1
46	Screw	1
47	Connecting Base	1
48	Ball	1
49	Ball Cap	1
50	Spring	1
51	Screw	1
52*	O-ring	1
53	Screw	1
54	Plastic Cap	1
55	Seal Kit (extra kit not included)	1