

5 Ton Hyd. Service Jack

- ASSEMBLY
- OPERATING INSTRUCTIONS
- PARTS BREAKDOWN

CFJ50

OPERATING INSTRUCTIONS

Close the release valve by rotating the hand knob clockwise. Pump the foot pedal until full weight of load is pressed against saddle. Unlock pump handle by sliding pin to left. **To raise the lifting head**, turn release knob to the right. **To lower lifting head**: turn release **SLOWLY** to left. Speed of lowering varies with the amount release is opened.

ASSEMBLY INSTRUCTIONS

1. This unit comes pre-assembled, except for the handle.
2. Unscrew bolt and nut from handle block assembly. Hold handle parallel with ground, slide into handle block assembly. Turn release valve knob on top of handle until bolt holes line up. Screw the bolt back in and tighten nut.
3. Check all nuts and bolts for tightness before use.

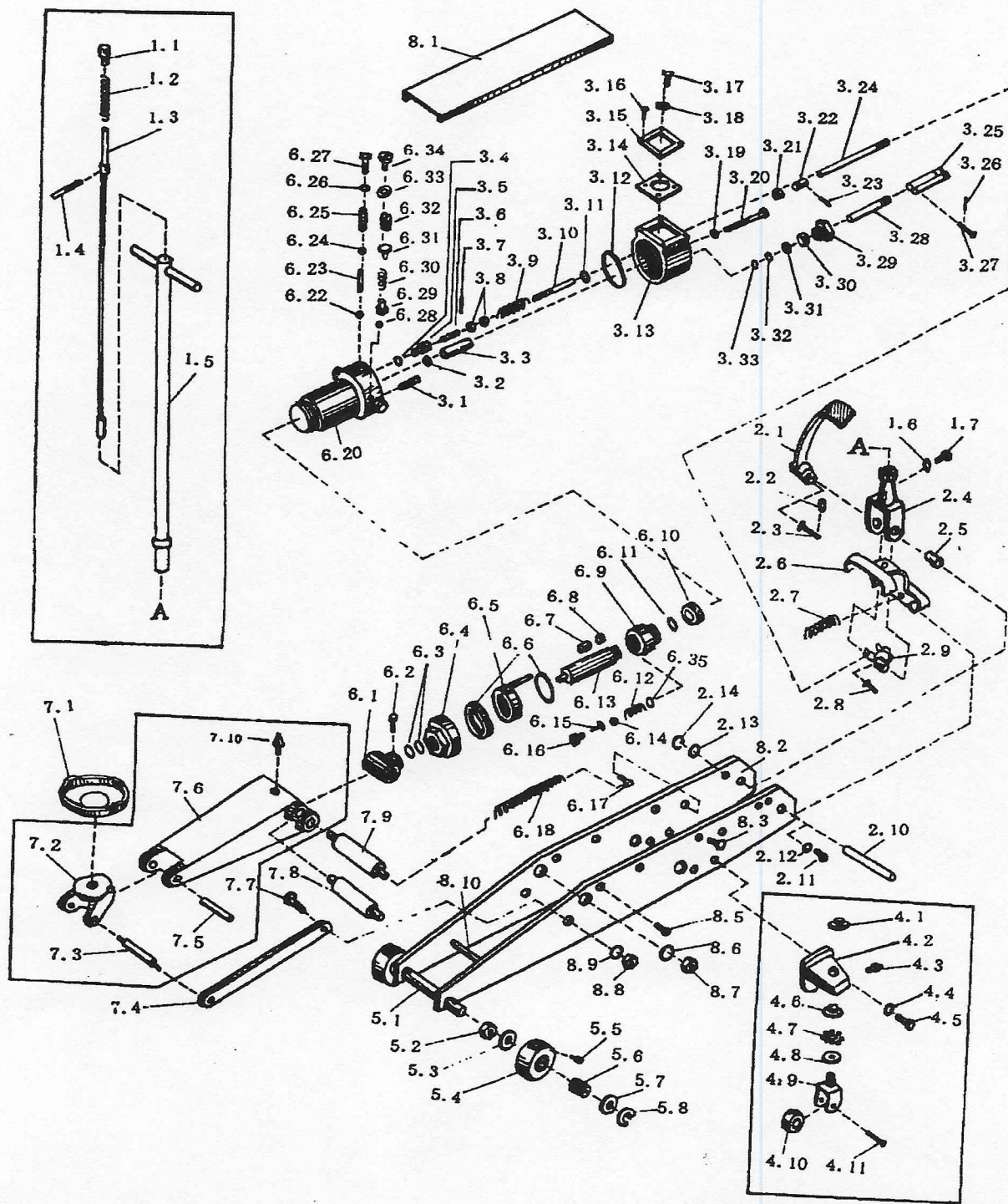
▲WARNING

FOR YOUR SAFETY & TO PREVENT INJURY:

This is a lifting device ONLY. Immediately support load by other appropriate means after lifting. **DO NOT OVERLOAD**. Overloading can cause damage to or failure of the jack. Make sure load is centered on ram. Lift only on areas of the vehicle as specified by the vehicle manufacturer. This jack is designed for use only on hard, level surfaces capable of sustaining the load. Use on other than hard level surfaces can result in instability of jack and possible loss of load. Read, study and understand all manufacturers instructions before using the jack. Failure to heed these warnings may result in loss of load, damage to jack and/or failure resulting in personal injury or property damage. Visual inspection should be made before each use of the jack, checking for leaking hydraulic fluid and damaged, loose **or missing parts**.

ATTENTION!!

If you are missing any parts or find any damage, call **ARCAN** direct. We will remedy the situation. **DO NOT CALL THE STORE**. Thank you, for your cooperation. CALL
1-803-834-0800 (Monday thru Friday 9am to 5pm Eastern time)



Item	Part No.	Description
1.1	CFJ501.1	End Cover
1.2	CFJ501.2	Compression Spring
1.3	CFJ501.3	Deflector Rod
1.4	CFJ501.4	Screw Rod
1.5	CFJ501.5	Control Rod
1.6	CFJ501.6	Washer
1.7	CFJ501.7	Fastening Screw
2.1	CFJ502.1	Foot Pedal
2.2	CFJ502.2	Wire
2.3	CFJ502.3	Pin
2.4	CFJ502.4	Fork Member
2.5	CFJ502.5	Bush
2.6	CFJ502.6	Base
2.7	CFJ502.7	Spring
2.8	CFJ502.8	Pin
2.9	CFJ502.9	Cap
2.10	CFJ502.10	Shaft
2.11	CFJ502.11	Screw
2.12	CFJ502.12	Washer
2.13	CFJ502.13	Washer
2.14	CFJ502.14	Clamp Ring
3.1	CFJ503.1	Filter
3.2	CFJ503.2	Washer
3.3	CFJ503.3	Outside Tube
3.4	CFJ503.4	Washer
3.5	CFJ503.5	Valve Seat
3.6	CFJ503.6	Needle
3.7	CFJ503.7	Wire
3.8	CFJ503.8	Nut
3.9	CFJ503.9	Spring
3.10	CFJ503.10	Screw Rod
3.11	CFJ503.11	Rubber Ring
3.12	CFJ503.12	Rubber Ring
3.13	CFJ503.13	Cylinder Body
3.14	CFJ503.14	Paper Washer
3.15	CFJ503.15	Cover Plate
3.16	CFJ503.16	Bolt
3.17	CFJ503.17	Screw
3.18	CFJ503.18	Washer
3.19	CFJ503.19	Seal Washer
3.20	CFJ503.20	Bolt
3.21	CFJ503.21	Nut
3.22	CFJ503.22	Connecting Bush
3.23	CFJ503.23	Wire
3.24	CFJ503.24	Connecting Rod
3.25	CFJ503.25	Driving Rod
3.26	CFJ503.26	Wire
3.27	CFJ503.27	Pin
3.28	CFJ503.28	Piston Rod
3.29	CFJ503.29	Locking Nut
3.30	CFJ503.30	Protect Dust Ring
3.32	CFJ503.32	Seal Ring
3.33	CFJ503.33	Bush Prevent Ring
4.1	CFJ504.1	Cover
4.2	CFJ504.2	Wheel Cover
4.3	CFJ504.3	Injecting Oil Nozzle
4.4	CFJ504.4	Washer
4.5	CFJ504.5	Screw
4.6	CFJ504.6	Bearing Cover
4.7	CFJ504.7	Steel Ball
4.8	CFJ504.8	Bearing Holder
4.9	CFJ504.9	Wheel Fork
4.10	CFJ504.10	Wheel

Item	Part No.	Description
4.11	CFJ504.11	Rivet
5.1	CFJ505.1	Axle
5.2	CFJ505.2	Nut
5.3	CFJ505.3	Stop Ring
5.4	CFJ505.4	Wheel
5.5	CFJ505.5	Pressure Filler Port
5.6	CFJ505.6	Roller
5.7	CFJ505.7	Stop Ring
5.8	CFJ505.8	Split Ring
6.1	CFJ506.1	Joint
6.2	CFJ506.2	Screw
2 6.3	CFJ506.3	Seal Ring
6.4	CFJ506.4	Large Nut
6.5	CFJ506.5	Ring
2 6.6	CFJ506.6	Washer
6.7	CFJ506.7	Bush
1 6.8	CFJ506.8	Seal Ring
6.9	CFJ506.9	Piston
1 6.10	CFJ506.10	Rubber Cup
1 6.11	CFJ506.11	Stop Ring
6.12	CFJ506.12	Spring
6.13	CFJ506.13	Piston Rod
6.14	CFJ506.14	Steel Ball
6.15	CFJ506.15	Push Needle
6.16	CFJ506.16	Valve Seat
6.17	CFJ506.17	Screw
6.18	CFJ506.18	Spring
6.20	CFJ506.20	Outer Body
6.22	CFJ506.22	Steel Ball
6.23	CFJ506.23	Small Push Rod
6.24	CFJ506.24	Steel Ball
6.25	CFJ506.25	Large Ball Rod
6.26	CFJ506.26	Washer
6.27	CFJ506.27	Bolt
6.28	CFJ506.28	Steel Ball
6.29	CFJ506.29	Valve Seat
6.30	CFJ506.30	Spring
6.31	CFJ506.31	Stop Block
6.32	CFJ506.32	Screw
1 6.33	CFJ506.33	Seal Ring
6.34	CFJ506.34	Screw
7.1	CFJ507.1	Tray
7.2	CFJ507.2	Joint
7.3	CFJ507.3	Axle
7.4	CFJ507.4	Level Supporting Rod
7.5	CFJ507.5	Axle
7.6	CFJ507.6	Rocker
7.7	CFJ507.7	Bolt
7.8	CFJ507.8	Axle
7.9	CFJ507.9	Axle
7.10	CFJ507.10	Filter
8.1	CFJ508.1	Cover Plate
8.2	CFJ508.2	Side Plate
8.3	CFJ508.3	Rivet
8.5	CFJ508.5	Screw
8.6	CFJ508.6	Washer
8.7	CFJ508.7	Nut
8.8	CFJ508.8	Nut
8.9	CFJ508.9	Washer
8.10	CFJ508.10	Limiter Axle
3.31	CFJ503.31	Stop Ring
6.35	CFJ506.35	Washer