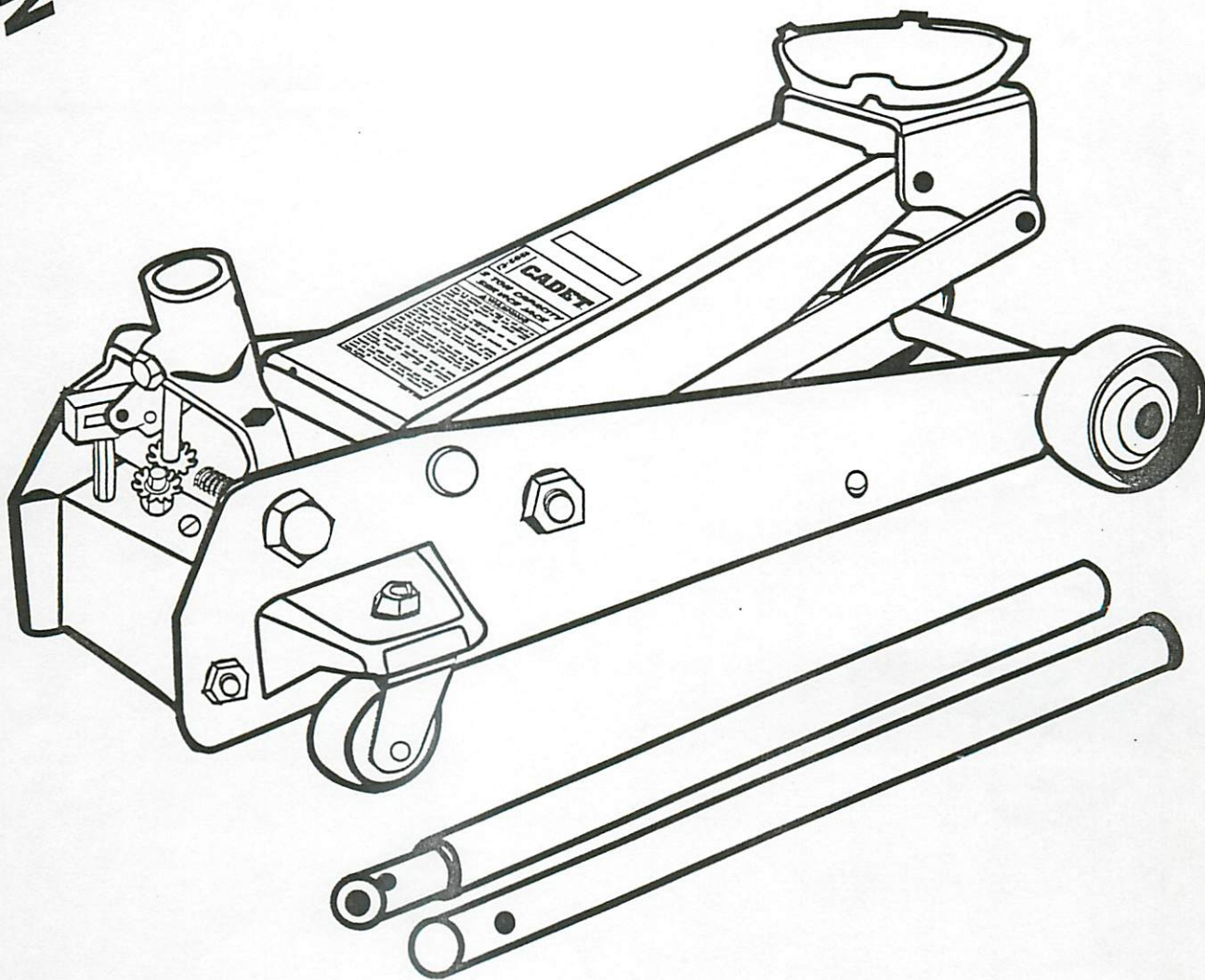


Part No.
1202-CJ

CADET™

2 TON SERVICE JACK



PARTS BREAKDOWN & OPERATING MANUAL



WARNING



THIS IS A LIFTING DEVICE ONLY. DO NOT MOVE OR DOLLY THE VEHICLE WHILE ON THE JACK. IMMEDIATELY AFTER LIFTING SUPPORT THE VEHICLE WITH APPROPRIATE MEANS.

DO NOT OVERLOAD. OVERLOADING CAN CAUSE DAMAGE TO OR FAILURE OF THE JACK.

LIFT ONLY ON AREAS OF THE VEHICLE AS SPECIFIED BY THE VEHICLE MANUFACTURER.

CENTER LOAD ON SADDLE PRIOR TO LIFTING. OFF-CENTER LOADS MAY CAUSE DAMAGE TO JACK, LOSS OF LOAD, PROPERTY DAMAGE, PERSONAL OR FATAL INJURY.

THIS JACK IS DESIGNED FOR USE ONLY ON HARD LEVEL SURFACES CAPABLE OF SUSTAINING THE LOAD. USE ON OTHER THAN HARD LEVEL SURFACES CAN RESULT IN JACK INSTABILITY AND POSSIBLE LOSS OF LOAD.

NO ALTERATIONS TO THE JACK SHALL BE MADE.

READ, STUDY AND UNDERSTAND THE OPERATING MANUAL PACKED WITH THIS JACK BEFORE OPERATING.

FAILURE TO HEED THESE WARNINGS MAY RESULT IN LOSS OF LOAD, DAMAGE TO JACK, AND/OR FAILURE RESULTING IN PROPERTY DAMAGE, PERSONAL OR FATAL INJURY.

OPERATING INSTRUCTIONS

TO RAISE LOAD

1. Close release valve by turning handle **CLOCKWISE** to a **SNUG-TIGHT** position. (DO NOT OVERTIGHTEN).
2. Position jack under load so that saddle will control load **FIRMLY** and is **CENTERED** so it cannot slip.
3. Raise jack to desired height. Transfer to **JACK STANDS** if load is to be held up for an extended period.

TO LOWER LOAD

Open release valve by turning handle **COUNTER-CLOCKWISE** very slowly. The speed of lowering the load is controlled by how much you turn handle.

DESCRIPTION:

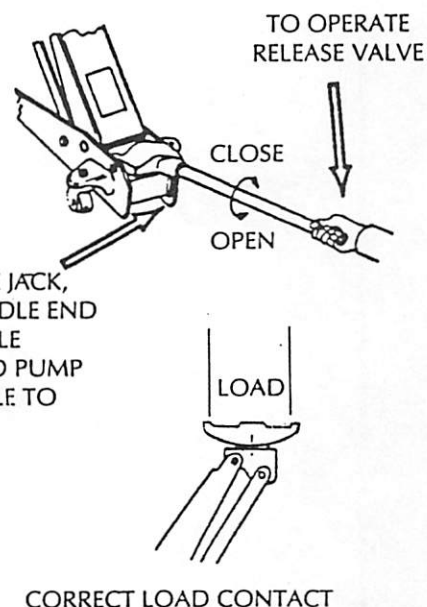
Model 1202-CJ service jack is a self-contained device designed for lifting, but not sustaining, a partial vehicular load. It consists of a frame with wheels and swivel casters supporting a mechanism that actuates a pivoting lift arm equipped with a saddle. It is designed for use by professional auto mechanics.

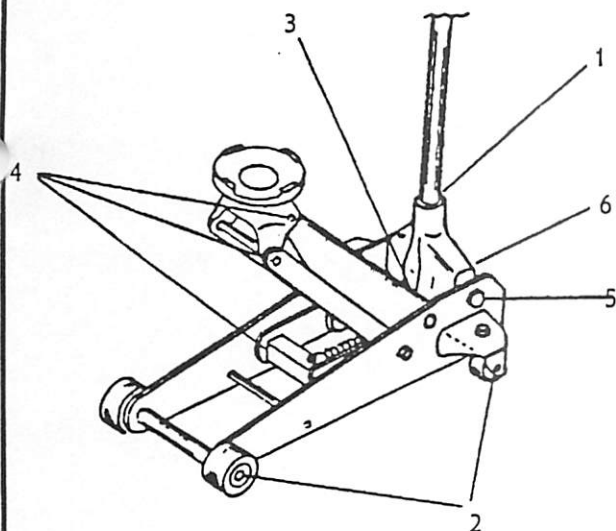
ASSEMBLY INSTRUCTIONS:

1. Place rear casters (#2) up through the rear brackets. Place split lockwasher (#9) and lock nut (#3) onto thread and tighten.
2. Place wheels (#4) on the front axle and add washer (#5) and retaining ring (#6) onto axle.
3. Put lower handle (#36) into handle socket (#26), place handle bolt (#34) into rear of handle socket and tighten. Put upper handle (#37) onto lower handle and tighten hex head screw (#38) through hole.
4. Place saddle (#12) into lifting arm.

Prior to Operation:

Sometimes during shipment and handling, Air gets into the hydraulic system, causing poor lifting performance. Purge any air from the system by fully opening Release Valve (turn handle counterclockwise as shown), then, while holding the saddle down, operate pump handle rapidly several times





LUBRICATION

1. Handle - Lubricate moving parts with light oil and grease handle where it enters the handle socket.
2. Wheels - Lubricate all wheel axles and caster bearings with light oil.
3. Lift Arm - Add grease to lift arm fitting.
4. Saddle and linkage - Lubricate with light oil all moving and pivoting parts of saddle and lift arm linkages.
5. Handle Socket Pivot Bolts - Lubricate (2) pivot bolts with light oil.
6. Plunger and Plunger Pin - Grease thoroughly, connection between pump plunger and pin in handle socket.

MAINTENANCE INSTRUCTIONS:

IMPORTANT: When adding or replacing oil, always use a good grade hydraulic jack oil. Avoid mixing types of oil. **DO NOT** use Brake Fluid, Alcohol, Glycerine, detergent motor oil or dirty oil. Improper fluid can cause serious internal damage to jack. When adding oil, be **VERY CAREFUL** not to permit dirt or any foreign matter to get into the system.

Check Ram and Plunger every 3 months for any signs of rust or corrosion. Clean as needed and wipe with an oily cloth. When not using the jack, always leave the Saddle all the way down.

SPECIFICATIONS

Capacity	2 Ton
Low Height	5-1/8"
Raised Height	19-3/8"
Length	28-9/16"
Chassis Width	13-3/4"
Handle Length	41-1/2"
Saddle Diameter	7-3/8"
Shipping Wt.	90 Lbs.

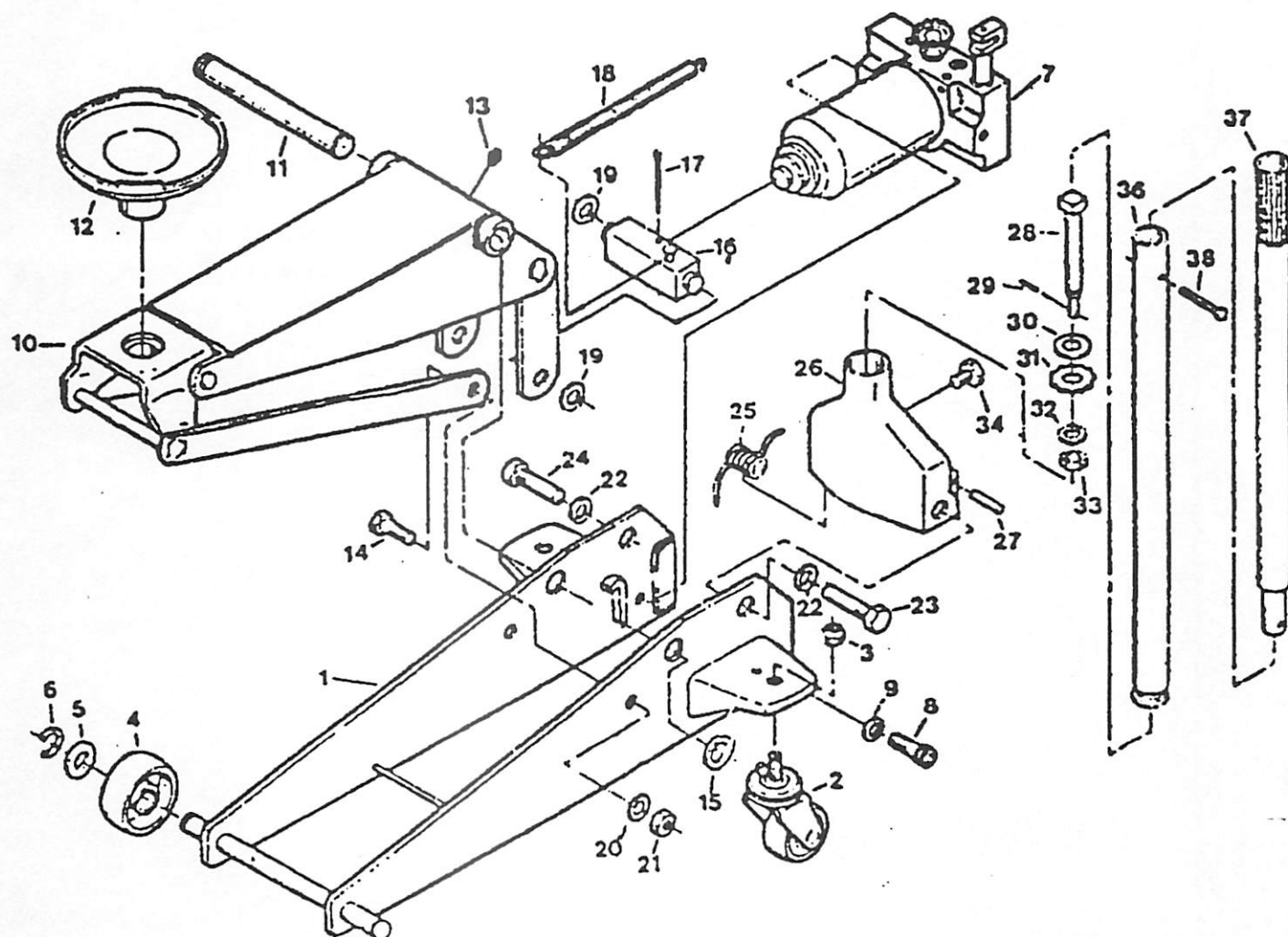
INSPECTION

Visual inspection should be made before each use of the jack, checking for leaking hydraulic fluid and damaged, loose or missing parts. Each jack must be inspected by a manufacturer's repair facility immediately, if accidentally subjected to an abnormal load or shock. Any jack which appears to be damaged in any way, is found to be badly worn, or operates abnormally **MUST BE REMOVED FROM SERVICE** until necessary repairs are made by a manufacturer's authorized repair facility. It is recommended that an annual inspection of the jack be made by a manufacturer's authorized repair facility and that any defective parts, decals or warning labels be replaced with manufacturer's specified parts.

A list of authorized repair facilities is available from the manufacturer.

OWNER/USER RESPONSIBILITY

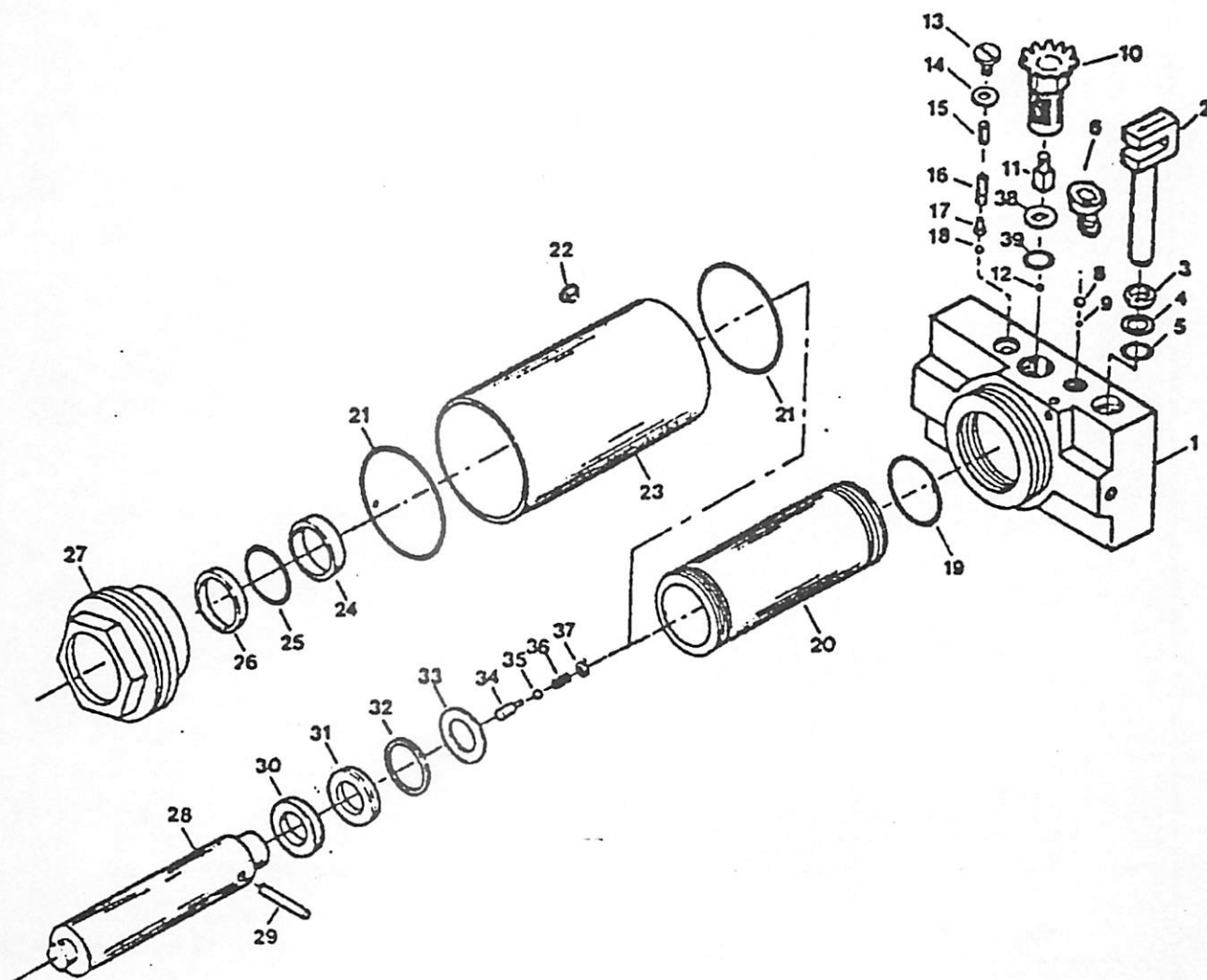
The owner and/or user must have an understanding of the manufacturer's operating instructions and warnings before using the Service Jack. Personnel involved in the use and operation of equipment shall be careful, competent, trained, and qualified in the safe operation of the equipment and its proper use when servicing motor vehicles and their components. Warning information should be emphasized and understood. If the operator is not fluent in English, the manufacturer's instructions and warnings shall be read to and discussed with the operator in the operator's native language by the purchaser/owner, making sure that the operator comprehends its contents. Owner and/or user must study and maintain for future reference the manufacturer's instructions and pertinent warning information. Owner and/or user is responsible for keeping all warning labels and instruction manuals legible and intact. Replacement labels and literature are available from the manufacturer.



Ref. No.	Part No.	Qty.	Description
1	10950	1	Side Plate Weldment
2	50950	2	Caster Assembly
3	1252	2	Locknut
4	00001	2	Wheel
5	24848	2	Washer (Axle)
6	24894	2	Retaining Ring
7	30950	1	Power Unit Assembly
8	123070	2	Socket Head Cap Screw
9	12859	2	Split Lockwasher
10	20950	1	Lift Arm Assembly
11	00002	1	Shaft Arm
12	40950	1	Saddle
13	61152	1	Grease Fitting
14	00006	2	Link Bolt
15	25894	2	Retaining Ring
16	22950	1	Link Block (Ram)
17	44591	1	Cotter Pin
18	00005	1	Return Spring
19	25894	2	Retaining Ring

Ref. No.	Part No.	Qty.	Description
20	16859	2	Lockwasher
21	1654	2	Hex Nut
22	18859	2	Lockwasher
23	00003	1	Bolt
24	00003	1	Bolt
25	00004	1	Torsion Spring
26	60003	1	Handle Socket
27	00010	1	Plunger Pin
28	60002	1	Gear Shaft
29	21291	1	Cotter Pin
30	16848	1	Washer
31	60001	1	Gear, Handle Socket
32	10859	1	Lockwasher
33	1041	1	Hex Nut
34	00009	1	Handle Bolt
36	72950	1	Lower Handle
37	71950	1	Upper Handle
38	63530	1	Hex Head Screw

PARTS BREAKDOWN & OPERATING MANUAL



Ref. No.	Part No.	Qty.	Description
1	30001	1	Valve Block
2	30020	1	Plunger
3	30023	1	Wiper
4	30019	1	Back-Up Ring
5	30018	1	O-Ring
6	30022	1	Plug Screw
8	10308	1	Ball
9	1/4038	1	Ball
10	32950	1	Release Valve Assembly
11	30011	1	Actuator
12	8308	1	Ball
13	30015	1	Plug Screw
14	30016	1	Seal Washer
15	30014	1	Overload Valve Screw
16	30013	1	Spring
17	30017	1	Plunger
18	3308	1	Ball
19	30002	1	O-Ring
20	30004	1	Cylinder

Ref. No.	Part No.	Qty.	Description
21	30003	2	O-Ring
22	30024	1	Oil Fill Plug
23	30005	1	Reservoir
24	30007	1	Bushing
25	30008	1	O-Ring
26	30009	1	Wiper
27	30006	1	Tank Nut
28	31001	1	Ram
29	31009	1	Ram Pin
30	31002	1	Ram Seal Washer
31	31003	1	O-Ring Retainer
32	31004	1	O-Ring
33	31005	1	Seal Retainer Washer
34	31008	1	Limit Valve Pin
35	6308	1	Ball
36	31006	1	Spring
37	31007	1	Valve Retainer
38	30010	1	Guide Plate
39	30012	1	O-Ring

PARTS BREAKDOWN & OPERATING MANUAL

**Part No.
1202-CJ**

CADET™

2 TON SERVICE JACK

LIMITED WARRANTY

Carquest Cadet™ shop equipment and tools excluding accessories, are warranted against defects in materials or workmanship for a period of 90 days from original purchase. We will repair or replace at our option any defective part or unit which proves to be defective in material or workmanship within this warranty plan. This warranty does not cover damage to equipment or tools arising from alteration, abuse, misuse, damage and does not cover any repairs or replacement made by anyone other than Carquest Cadet™ or its authorized service centers.

The foregoing obligation is Carquest Cadet's sole liability under this or any implied warranty and under no circumstances shall we be liable for any incidental or consequential damages.

NOTE: Some states do not allow the exclusion or limitation or incidental or consequential damages, so the above limitation or exclusion may not apply to you.

Return equipment or parts to service center transportation prepaid. Be certain to include your name and address, evidence of the purchase date, and description of the suspected defect.

This warranty gives you specific legal rights and you may also have other rights which vary from state to state.

PARTS BREAKDOWN & OPERATING MANUAL