

BLACKHAWK

LIFTING EQUIPMENT

Repair Parts

Air/Hydraulic Service Jack

MODEL SJ-9

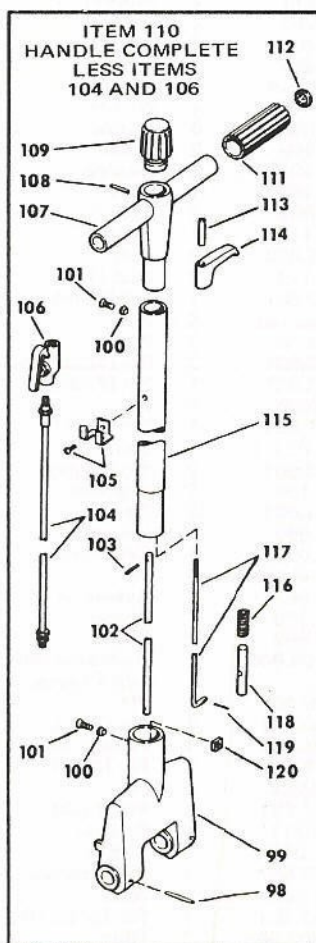
Serial Code A

Air/Hydraulic Service Jack

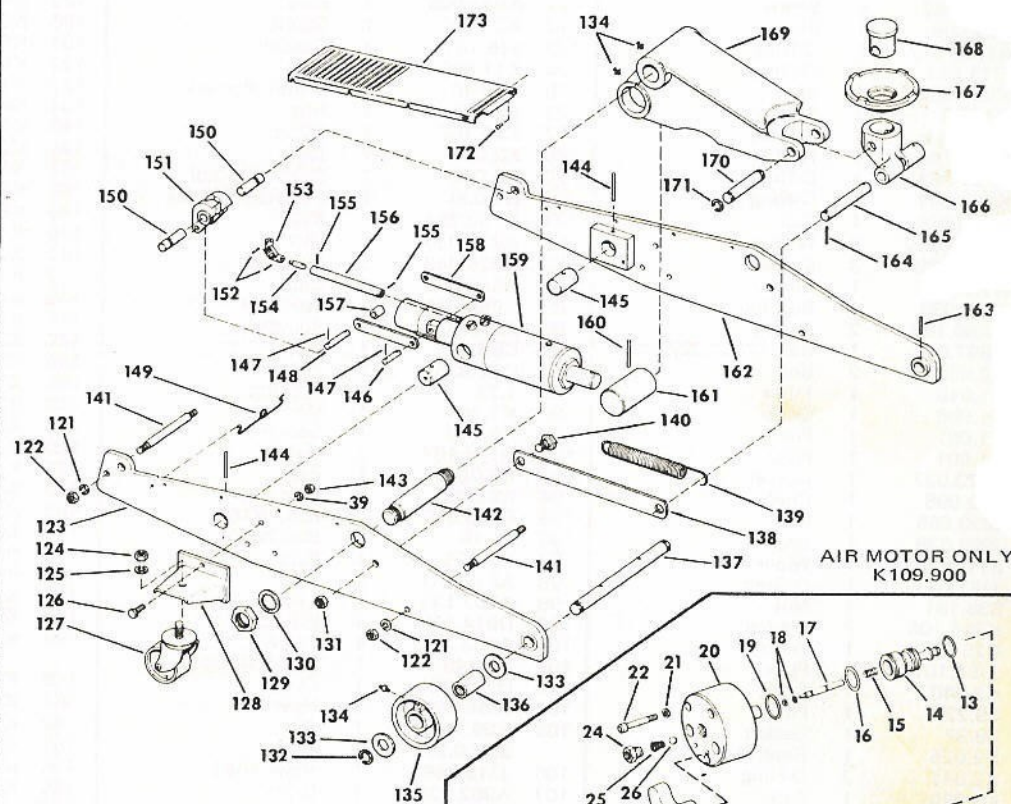
MODEL SJ-9

Serial Code A

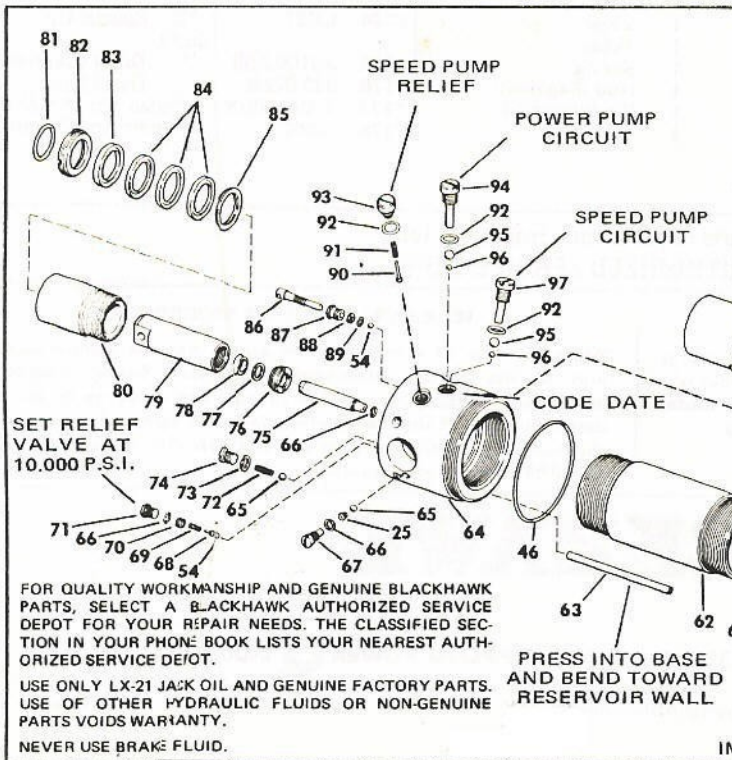
CAPACITY: 10 TON



HYDRAULIC UNIT W/AIR MOTOR K108.900



AIR MOTOR ONLY
K109.900



FOR QUALITY WORKMANSHIP AND GENUINE BLACKHAWK PARTS, SELECT A BLACKHAWK AUTHORIZED SERVICE DEPOT FOR YOUR REPAIR NEEDS. THE CLASSIFIED SECTION IN YOUR PHONE BOOK LISTS YOUR NEAREST AUTHORIZED SERVICE DEPOT.

USE ONLY LX-21 JACK OIL AND GENUINE FACTORY PARTS.
USE OF OTHER HYDRAULIC FLUIDS OR NON-GENUINE
PARTS VOIDS WARRANTY.
NEVER USE BRAKE FLUID.

NEVER USE BRAKE FLUID.

**SPEED PUMP
RELIEF**

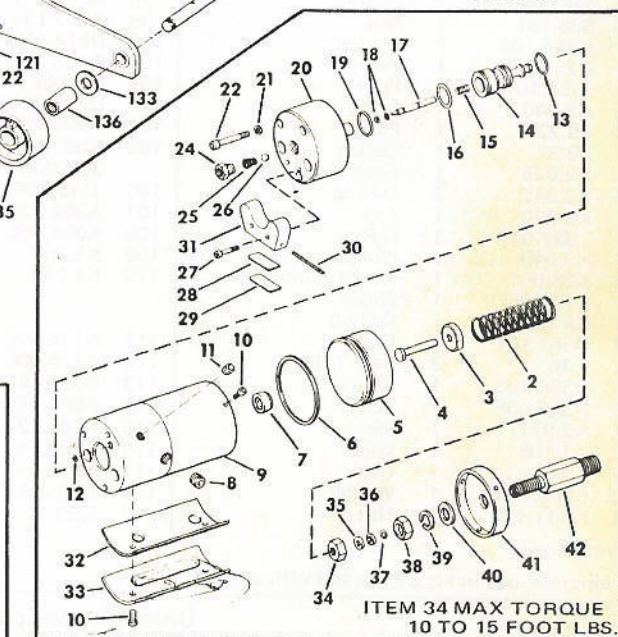
POWER PUMP

SPEED PUMP

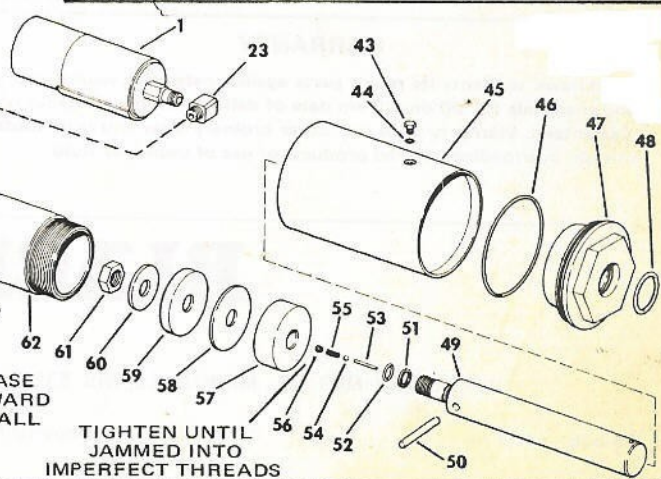
CODE	DATE
1	1970
2	1971
3	1972
4	1973
5	1974
6	1975
7	1976
8	1977
9	1978
10	1979
11	1980
12	1981
13	1982
14	1983
15	1984
16	1985
17	1986
18	1987
19	1988
20	1989
21	1990
22	1991
23	1992
24	1993
25	1994
26	1995
27	1996
28	1997
29	1998
30	1999
31	2000
32	2001
33	2002
34	2003
35	2004
36	2005
37	2006
38	2007
39	2008
40	2009
41	2010
42	2011
43	2012
44	2013
45	2014
46	2015
47	2016
48	2017
49	2018
50	2019
51	2020
52	2021
53	2022
54	2023
55	2024
56	2025
57	2026
58	2027
59	2028
60	2029
61	2030
62	2031
63	2032
64	2033
65	2034
66	2035
67	2036
68	2037
69	2038
70	2039
71	2040
72	2041
73	2042
74	2043
75	2044
76	2045
77	2046
78	2047
79	2048
80	2049
81	2050
82	2051
83	2052
84	2053
85	2054
86	2055
87	2056
88	2057
89	2058
90	2059
91	2060
92	2061
93	2062
94	2063
95	2064
96	2065
97	2066
98	2067
99	2068
100	2069
101	2070
102	2071
103	2072
104	2073
105	2074
106	2075
107	2076
108	2077
109	2078
110	2079
111	2080
112	2081
113	2082
114	2083
115	2084
116	2085
117	2086
118	2087
119	2088
120	2089
121	2090
122	2091
123	2092
124	2093
125	2094
126	2095
127	2096
128	2097
129	2098
130	2099
131	2100
132	2101
133	2102
134	2103
135	2104
136	2105
137	2106
138	2107
139	2108
140	2109
141	2110
142	2111
143	2112
144	2113
145	2114
146	2115
147	2116
148	2117
149	2118
150	2119
151	2120
152	2121
153	2122
154	2123
155	2124
156	2125
157	2126
158	2127
159	2128
160	2129
16	

PRESS INTO BASE
AND BEND TOWARD
RESERVOIR WALL

TIGHTEN UNTIL
JAMMED INTO
IMPERFECT THREADS



ITEM 34 MAX TORQUE
10 TO 15 FOOT LBS



ORIGINAL MANUFACTURER IS OUT OF BUSINESS. NO PARTS AVAILABLE FROM ORIGINAL SOURCE.

REPAIR PARTS LIST

Item No.	Part No.	No. Req.	Description	Item No.	Part No.	No. Req.	Description	Item No.	Part No.	No. Req.	Description
1	K109.900	1	Air Motor	62	K2.030	1	Cylinder	120	SJ100.420	2	Nut
2	K1.110	1	Spring	63	K19.268	1	Tube	121	S1.119	4	Washer
3	K1.108	1	Washer	64	K7.005	1	Base	122	S1.120	4	Nut
4	B702.040	1	Plunger	*65	S1.16	2	Ball, 5/16"	123	K34.101	1	Plate, R.H.
5	B729.578	1	Piston	*66	B159.167	3	Gasket	124	J559.055	2	Nut
*6	K2.044	1	Ring	67	K9.006	1	Plug	125	S4.180	2	Washer
*7	F15.808	1	Seal	68	K1.013	1	Guide	126	K10.028	6	Bolt
8	N62.006	1	Plug	69	B162.206	1	Spring	127	K3.154	2	Caster
9	K893.900	1	Body w/Sleeve	70	B956.028	1	Plug	128	K7.111	2	Bracket
10	B733.087	4	Screw	71	A651.006	1	Plug	129	K4.055	2	Nut
11	D99.006	1	Plug	72	K7.110	1	Spring	130	K9.108	2	Washer
*12	AJ100.312	1	O-Ring	*73	S15.167	1	Gasket	131	K5.055	2	Nut
*13	J711.041	1	O-Ring	74	K11.006	1	Plug	132	K52.044	2	Ring
14	K895.052	1	Stem	75	K4.040	1	Piston (Power)	133	K10.108	4	Washer
*15	K4.110	1	Spring	76	K6.055	1	Nut	134	S4.188.2	6	Fitting
*16	J597.041	1	O-Ring	*77	K15.108	1	Wiper	135	K2.106	2	Wheel
17	K894.149	1	Rod	*78	K3.041	1	Cup	136	K2.107	2	Bearing
18	B744.503	1	O-Ring	79	K5.040	1	Piston (Speed)	137	K8.104	1	Axle
*19	K898.041	1	O-Ring	80	K1.030	1	Cylinder (Pump)	138	K4.062	2	Link
20	K803.020	1	Cap	*81	A730.394	1	Seal	139	K5.110	1	Spring
21	AJ100.299	3	Washer	82	A825.035	1	Nut	140	K13.028	2	Bolt
22	K896.028	3	Screw	83	A826.043	1	Spreader	141	K2.149	2	Rod (Tie)
23	K1.291	1	Elbow	*84	D866.041	3	Cup	142	K19.061	1	Pin (Pivot)
24	J788.039	1	Bushing	85	A798.043	1	Spreader	143	B776.181	6	Nut
*25	BA85.183	2	Spring	86	K5.010	1	Spindle	144	K21.061	2	Pin
*26	K897.016	1	Ball, 5/16", Nylon	87	CB9.11	1	Nut	145	K20.061	2	Pin (Trunnion)
27	K2.028	2	Bolt	*88	CB9.335	1	Wiper	146	K22.061	4	Pin (Front)
28	K1.018	1	Filter	*89	1.74	1	Packing	147	K18.58	4	Pin
29	K1.098	1	Cover	90	K7.264	1	Valve	148	K24.061	1	Pin (Back)
30	K1.061	1	Pin	91	K6.110	1	Spring	149	K2.013	1	Stabilizer
31	K1.001	1	Plate	*92	D144.167	3	Gasket	150	K23.061	2	Pin (Yoke)
*32	C323.037	1	Gasket	93	K6.006	1	Plug	151	K1.134	1	Segment
33	C82.098	1	Cover	94	K8.006	1	Plug	152	K31.061	2	Pin
34	J893.055	1	Nut	*95	C783.016	2	Ball, 7/16"	153	K5.950	1	Universal
35	J999.039	1	Bearing	*96	S1.16	2	Ball, 5/16"	154	K9.096	1	Connector
*36	B712.562	1	Wiper	97	K7.006	1	Plug	155	D238.061	2	Pin
*37	J481.041	1	O-Ring	98	A812.261	2	Pin	156	K6.062	1	Extension
38	S38.181	1	Nut	99	A707.133	1	Yoke	157	K4.186	1	Spacer
39	K244.108	7	Washer	100	D914.108	4	Washer	158	K5.062	2	Link
40	D257.108	1	Washer	101	A953.252	4	Screw	159	K108.900	1	Hydraulic Unit w/Air Motor
41	J380.101	1	Plate	102	K3.149	1	Rod (Release)	160	K26.061	1	Pin
42	K2.040	1	Body	103	D184.061	1	Pin	161	K25.061	1	Pin (Arm)
43	C9.22-2	1	Plug	104	J354.646	1	Hose	162	K35.101	1	Plate, L.H.
*44	C9.37	1	Gasket	105	K59.111	1	Clip	163	K18.061	2	Pin (Axle)
45	K2.025	1	Reservoir		SJ100.374	1	Screw	164	K3.061	2	Pin
*46	K2.041	2	O-Ring	106	J319.264	1	Valve (Air)	165	K16.061	1	Pin (Link)
47	K3.020	1	Cap	107	A962.135	1	Cross	166	K8.111	1	Bracket
*48	L937.041	1	O-Ring	108	A954.058	1	Pin	167	K2.045	1	Saddle
49	K3.040	1	Plunger	109	K1.308	1	Knob	168	K27.061	1	Pin (Saddle)
50	K28.061	1	Pin (Hi-Limit)	110	K4.070	1	Handle(Complete- Less Items 104, 105, 106)	169	K2.103	1	Arm
*51	K11.108	1	Wiper	111	A725.550	2	Grip	170	K17.061	1	Pin (Bracket)
*52	K4.041	1	O-Ring	112	A726.006	2	Plug	171	K289.044	2	Ring
53	D367.107	1	Rod	113	D894.055	1	Nut	172	H94.028	8	Screw
*54	1.16	3	Ball, 7/32"	114	A963.144	1	Lever	173	K2.098	1	Cover
55	D386.183	1	Spring	115	A763.127	1	Tube	†174	LX21	72	Special Oil
56	D369.006	1	Screw	116	A768.141	1	Spring				Cu.In.
57	K2.071	1	Disc	117	A961.142	1	Rod (Segment)	†175	AJ100.503	1	Decal (Caution)
*58	K7.108	1	Wiper	118	A766.061	1	Pin (Segment)	†176	SJ9.026X		Decal Kit
*59	FA11.41-1	1	Cup	119	1.58	1	Pin	*177	K109.900X		Repair Kit (Air Motor)
60	E723.108	1	Washer					*178	SJ9X		Repair Kit (Complete)
61	EA11.120	1	Nut								

† Not Shown

*Items included in kit are marked with asterisk.

Order all repair parts requirements from your local
BLACKHAWK AUTHORIZED SERVICE DEPOT.

WARRANTY

Blackhawk warrants its repair parts against defects in workmanship and materials for 90 days from date of delivery to user. Chain is not warranted. Warranty does not cover ordinary wear and tear, abuse, misuse, overloading, altered products or use of improper fluid.

WARRANTY RETURN PROCEDURE

When question of warranty claim arises, the user should send his unit to the nearest Blackhawk Authorized Service Depot for inspection, transportation to be prepaid and evidence of purchase date furnished. If the claim comes under the terms of our warranty, the Authorized Service Depot will REPAIR OR REPLACE PARTS AFFECTED and return prepaid.

BLACKHAWK®

BLACKHAWK MFG. CO., MILWAUKEE, WIS. 53227 DIVISION OF **APPLIED POWER INDUSTRIES, INC.**