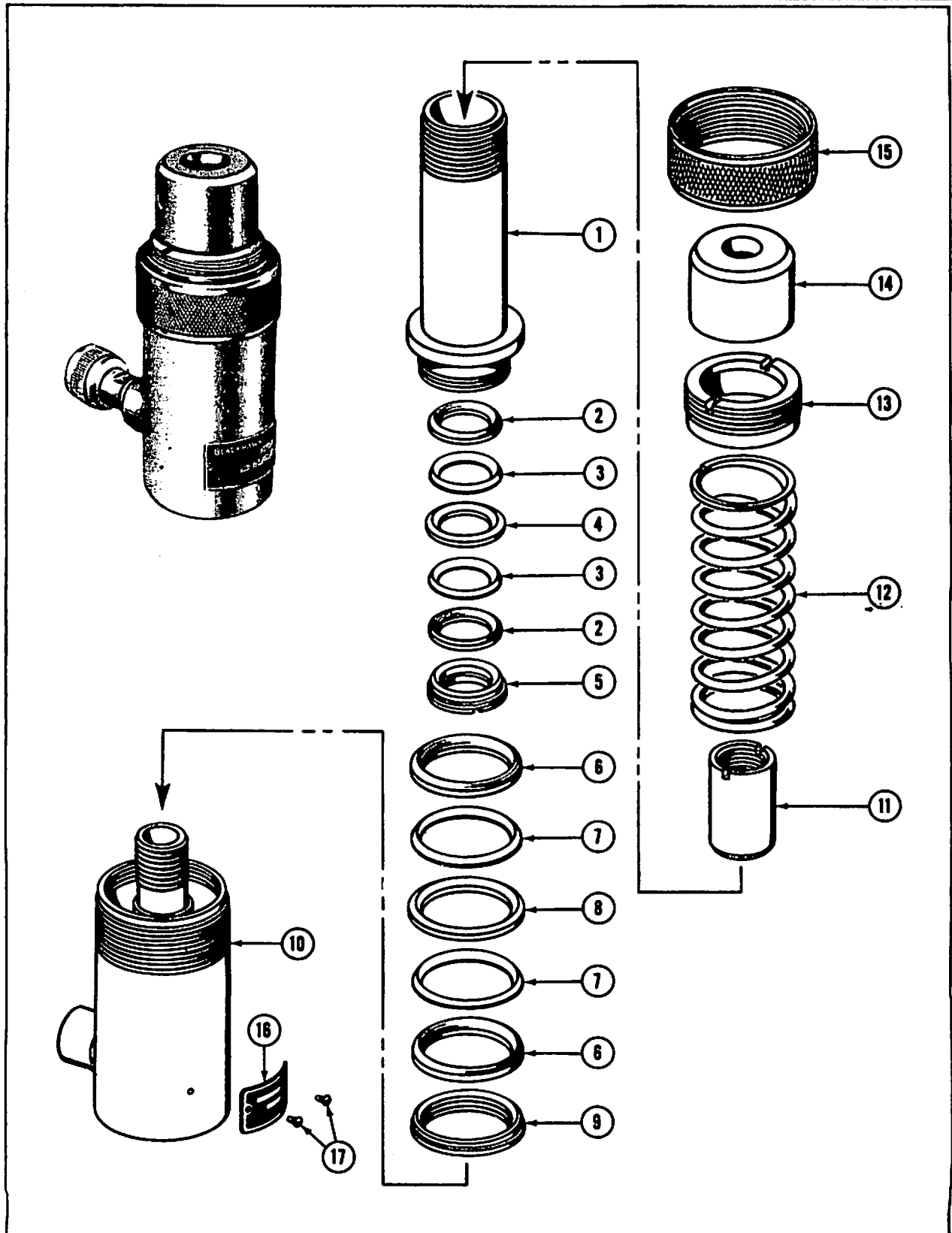


BLACKHAWK®

REPAIR PARTS SHEET
PORTO-POWER RAM
MODEL R-426A
HOLLOW-TYPE
 RATED CAPACITY
 10-TON
 Sheet No. S-123 Issued April 1956



**REPAIR PARTS SHEET FOR R-426A HYDRAULIC
 HOLLOW-TYPE PORTO-POWER RAM**

Parts List on Reverse Side

PARTS LIST FOR MODEL R-426A

Item No.	Part No.	Part Name	No. Req.
1	R426.40-1	Plunger	1
2	R426.41-1	V Cup	2
3	R426.316	Cup Separator	2
4	R426.41-R	V Cup	1
5	R426.21	V Cup Nut	1
6	R426.53	V Cup	2
7	R426.502	Cup Separator	2
8	R426.53-R	V Cup	1
9	R426.187	V Cup Nut	1

Item No.	Part No.	Part Name	No. Req.
10	R426.05A-3	Welded Base	1
11	R426.44-1	Plunger Stop Nut	1
12	R426.170	Plunger Spring	1
13	R426.171	Plunger Spring Nut	1
14	Z830	Saddle	1
15	R426.271	Thread Protector	1
16	1.26E	Name Plate	1
17	W78.03	Drive Screw	2

NOTE: No orders for parts can be filled unless both model and serial number of equipment is given.

GUARANTEE

All Blackhawk Porto-Power Pumps and Rams are guaranteed against defects in workmanship and material. In case of such defects, repairs and adjustments will be made on a no charge basis, providing the ram, pump or component parts are returned to one of our Authorized Repair Service Stations or the Blackhawk Service Station, 5054 W. State St., Milwaukee 8, Wis., by prepaid transportation for inspection. Guarantee does not cover rams and pumps worn out in service, damaged through abuse, overloading or accident. This Guarantee is VOID if anything but BLACKHAWK HYDRAULIC JACK OIL is used in the unit. Do NOT USE brake fluids.

A Network of AUTHORIZED REPAIR STATIONS serves Blackhawk Users worldwide

For quality workmanship with genuine Blackhawk parts select an authorized Blackhawk Service Station for your repair work. Only repairs performed by an authorized service station are backed with full factory guarantee. The Classified Section in your Phone Book lists your nearest Authorized Service Station.

BLACKHAWK MFG. CO. - - - MILWAUKEE 46, WIS.