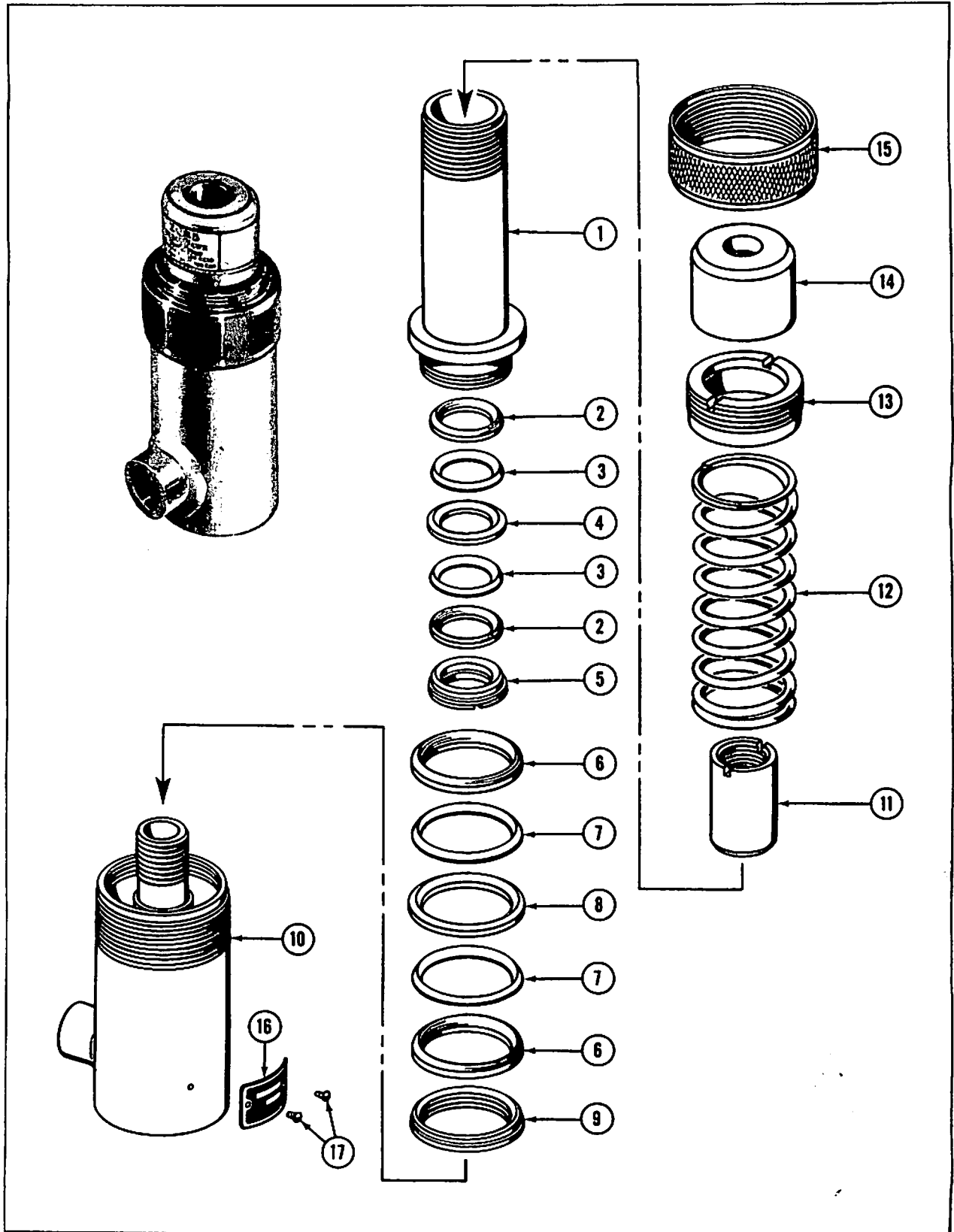


# BLACKHAWK®

REPAIR PARTS SHEET  
**PORTO-POWER RAM**  
**MODEL R-426**  
**HOLLOW-TYPE**  
RATED CAPACITY  
10-TON  
Sheet No. 1078—Issued Oct. 10, 1949



**REPAIR PARTS SHEET FOR R-426 HYDRAULIC  
HOLLOW-TYPE PORTO-POWER RAM**



# PARTS LIST FOR MODEL R-426

Item No.	Part No.	Part Name	No. Req.
1	R426.40-1	Plunger	1
2	R426.53	V Cup	2
3	R426.316	Cup Separator	2
4	R426.53R	V Cup	1
5	R426.21	V Cup Nut	1
6	R426.41-1	V Cup	2
7	R426.502	Cup Separator	2
8	R426.41R	V Cup	1
9	R426.187	V Cup Nut	1

Item No.	Part No.	Part Name	No. Req.
10	R426.05A-2	Welded Base	1
11	R426.44-1	Plunger Stop Nut	1
12	R426.170	Plunger Spring	1
13	R426.171	Plunger Spring Nut	1
14	Z830	Saddle	1
15	R426.271	Thread Protector	1
16	1.26E	Name Plate	1
17	W78.03	Drive Screw	2

**NOTE:** No orders for parts can be filled unless both model and serial number of equipment is given.

## GUARANTEE

All Blackhawk Porto-Power Pumps and Rams are guaranteed against defects in workmanship and material. In case of such defects, repairs and adjustments will be made on a no charge basis, providing the ram, pump or component parts are returned to one of our Authorized Repair Service Stations or the factory at Milwaukee by prepaid transportation for inspection. Guarantee does not cover rams and pumps worn out in service, damaged through abuse, overloading or accident. This Guarantee is VOID if anything but BLACKHAWK HYDRAULIC JACK OIL is used in the unit. Do NOT USE brake fluids.

## BLACKHAWK AUTHORIZED REPAIR SERVICE STATIONS

**BLACKHAWK MFG. CO. - - - MILWAUKEE 1, WIS.**