

BLACKHAWK

LIFTING EQUIPMENT

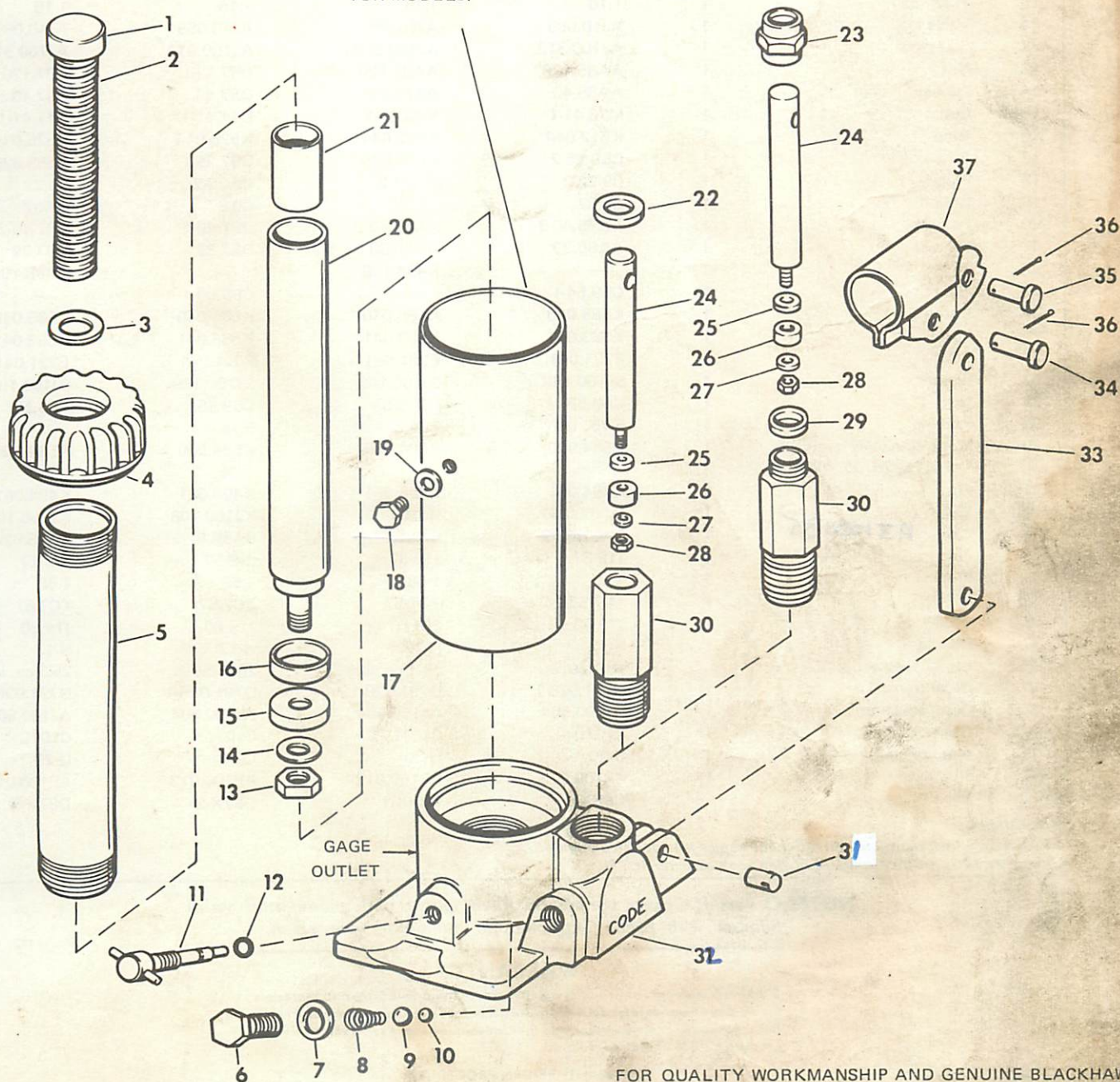
Repair Parts Information

Hand Jack w/Gage Outlet

MODELS CG-9, B & C
DG-87, B & C

RATED CAPACITY: CG-9 8 TON
DG-87 12 TON

NOTE
CARRYING HANDLE IS INCLUDED AND
WELDED TO RESERVOIR ON 12 & 20
TON MODELS.



FOR QUALITY WORKMANSHIP AND GENUINE BLACKHAWK PARTS, SELECT A BLACKHAWK AUTHORIZED SERVICE DEPOT FOR YOUR REPAIR NEEDS. THE CLASSIFIED SECTION IN YOUR PHONE BOOK LISTS YOUR NEAREST AUTHORIZED SERVICE DEPOT.

USE ONLY LX-21 JACK OIL AND GENUINE FACTORY PARTS. USE OF OTHER HYDRAULIC FLUIDS OR NON-GENUINE PARTS VOIDS WARRANTY.

NEVER USE BRAKE FLUID.

REPAIR PARTS LIST FOR MODELS CG-9 AND DG-87

ITEM NO.	DESCRIPTION	NO. REQ.	CG-9 SERIAL CODE B	CG-9 SERIAL CODE C	DG-87 SERIAL CODE B	DG-87 SERIAL CODE C
1	Saddle	1	AA85.45-1	AA85.45-1	D87.45-3	D87.45-3
2	Screw	1	AA85.28-1	AA85.45-1	D87.28-2	D87.28-2
* 3	"O" ring	1	D196.041	D196.041	K288.041	K288.041
4	Cap	1	CB9.20-4	K529.020	D87.20-2	K519.020
5	Cylinder <i>H7100.004</i>	1	CB9.30-2	CB9.30-2	D87.30-2	D87.30-2
6	Plug	1	CB9.185-2	CB9.185-2	CB9.185-2	CB9.185-2
* 7	Gasket	1	B159.167	B159.167	B159.167	B159.167
* 8	Spring	1	BA85.183	BA85.183	BA85.183	BA85.183
* 9	5/16" ball	1	S1.16	S1.16	S1.16	S1.16
* 10	7/32" ball	1	1.16	1.16	1.16	1.16
11	Valve	1	AJ10.059	AJ10.059	AJ10.059	AJ10.059
* 12	"O" ring	1	AJ100.312	AJ100.312	AJ100.312	AJ100.312
13	Nut	1	AA85.120	AA85.120	D87.120	D87.120
14	Washer	1	AA85.43	AA85.43	D87.43	D87.43
* 15	Cup	1	M73.41-1	M73.41-1	D11.41-1	D11.41-1
16	Ring	1	K512.044	K512.044	K525.044	K525.044
17	Reservoir	1	CB9.25-2	K548.025	D87.25B	K553.025
18	Plug	1	C9.22-2	C9.22-2	C9.22-2	C9.22-2
* 19	Gasket	1	C9.37	C9.37	C9.37	C9.37
20	Plunger	1	AA85.40-3	AA85.40-3	D87.40-2	D87.40-2
21	Sleeve	1	AA85.39	AA85.39	D87.39	D87.39
* 22	Wiper	1	—	K498.108	—	K498.108
23	Nut	1	CB9.54-1	—	CB9.54-1	—
24	Piston	1	K585.040	K585.040	K585.040	K585.040
* 25	Seal	1	K583.041	K583.041	K583.041	K583.041
* 26	Cup	1	E221.041	E221.041	E221.041	E221.041
* 27	Washer	1	SJ100.169	SJ100.169	SJ100.169	SJ100.169
* 28	Nut	1	CB9.55	CB9.55	CB9.55	CB9.55
* 29	Packing	1	5.75	—	5.75	—
30	Pump (includes items 22, 24, 25, 26, 27, 28)	1	K584.900	K584.900	K584.900	K584.900
31	Pin	1	K494.061	K494.061	K494.061	K494.061
32	Base	1	HJ100.067	HJ100.067	KJ100.108	KJ100.108
33	Link <i>AJ100035</i>	1	BA85.62-2	BA85.62-2	BA85.62-2	BA85.62-2
34	Pin	1	J19.57	J19.57	J19.57	J19.57
* 35	Pin	2	1.58	1.58	1.58	1.58
36	Pin	1	TC7.57	TC7.57	TC7.57	TC7.57
37	Beam	1	J19.60	J19.60	J19.60	J19.60
† 38	Handle	1	H-12	H-12	H-12	H-12
† 39	LX-21 special oil	1	18.1 cu. in.	18.1 cu. in.	25.3 cu. in.	25.3 cu. in.
† 40	Decal (repair)	1	D791.026-1	D791.026-1	D791.026-1	D791.026-1
† 41	Decal (caution)	1	AJ100.504	AJ100.504	AJ100.504	AJ100.504
† 42	Gage	1	C107L	C107L	C107L	C107L
† 43	Adaptor (gage)	1	U-20	U-20	U-20	U-20
† 44	Plug	1	AP100.013	AP100.013	AP100.013	AP100.013
* 45	Repair Kit	1	CB9X-1	CB9X-1	D87X-2	D87X-2

† Not shown

For economical maintenance order the repair kit specified Item 45.
Items included in the kit are indicated with an asterisk (*).

NOTE: Orders for parts cannot be filled unless both model and serial number with prefix imprinted on nameplate are given.

WARRANTY

Blackhawk warrants its products against defects in workmanship and materials for 90 days from date of delivery to user. Chain is not warranted. Warranty does not cover ordinary wear and tear, abuse, misuse, overloading, altered products or use of improper fluid.

WARRANTY RETURN PROCEDURE

When question of warranty claim arises, the user should send his unit to the nearest Blackhawk Authorized Service Depot for inspection, transportation to be prepaid and evidence of purchase date furnished. If the claim comes under the terms of our warranty, the Authorized Service Depot will REPAIR OR REPLACE PARTS AFFECTED and return prepaid.

BLACKHAWK®

BLACKHAWK MFG. CO., MILWAUKEE, WIS. 53227 DIVISION OF APPLIED POWER INDUSTRIES, INC.