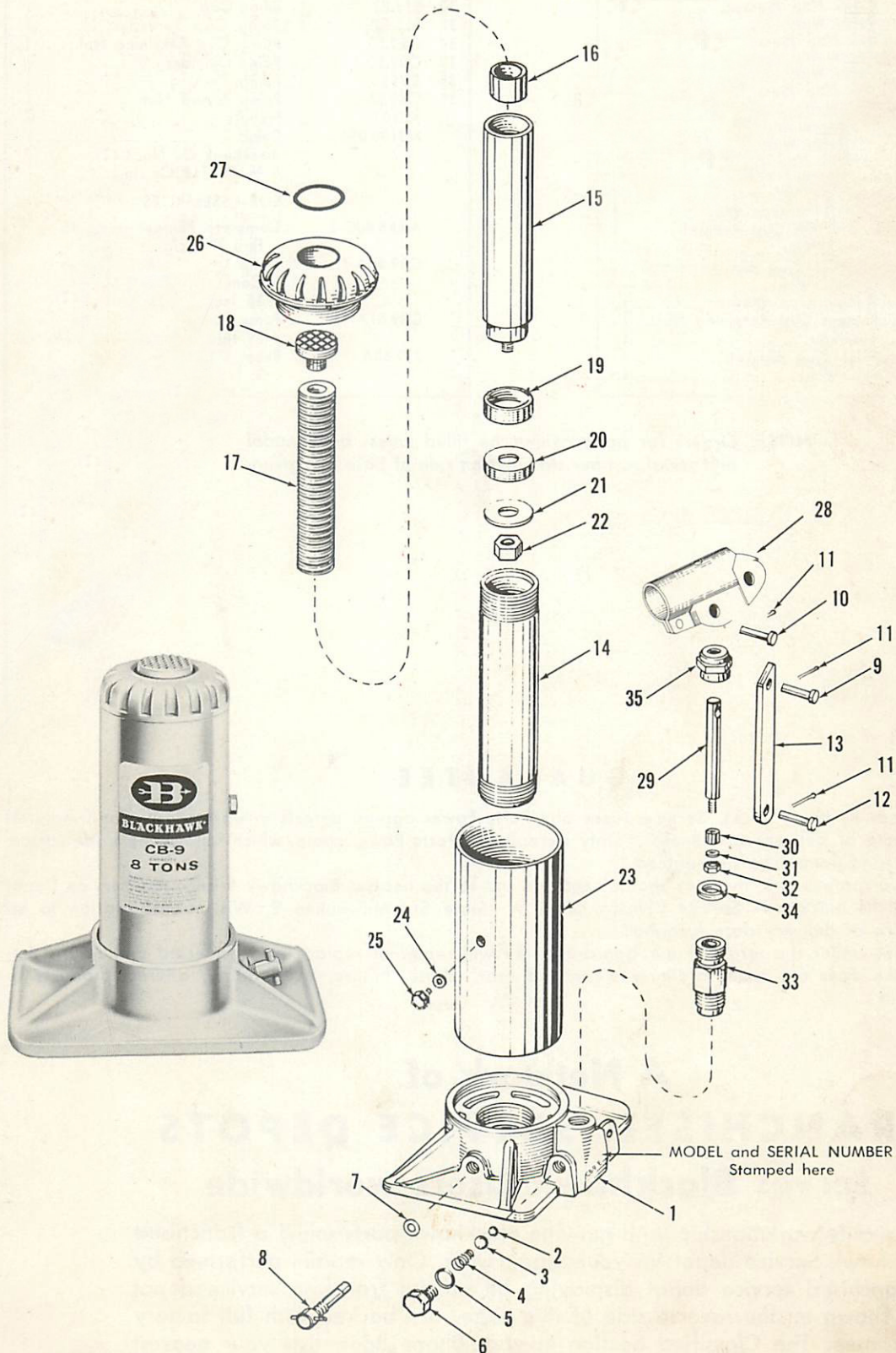


BLACKHAWK®

REPAIR PARTS SHEET
HAND JACK
MODEL CB-9
SERIAL CODE E
RATED CAPACITY
8-TON
Sheet No. S-166



Parts List on Reverse Side



REPAIR PARTS LIST FOR C B - 9 SERIAL CODE E JACK

Item No.	Part No.	Part Name	No. Req.
1	CB9.05-4	Base	1
2	1.16	Valve Ball	1
3	SI.16	Valve Ball	1
4	BA85.183	Valve Outlet Spring	1
5	BI59.167	Valve Plug Gasket	1
6	CB9.185-2	Valve Plug	1
7	AJ100.312	Release Valve "O" Ring	1
8	AJ10.059	Release Valve Spindle	1
9	TC7.57	Beam Link Pin	1
10	AJ100.062	Beam Pin	1
11	1.58	Cotter Pin	3
12	BA85.57-1	Base Link Pin	1
13	BA85.62-2	Link	1
14	CB9.30-2	Cylinder	1
15	AA85.40-3	Plunger	1
16	AA85.39	Plunger Sleeve	1
17	AA85.28-1	Plunger Adjusting Screw	1
18	AA85.45-1	Saddle	1
19	AA85.29-2	Plunger Ring	1
20	M73.41-1	Plunger Cup	1
21	AA85.43	Plunger Cup Washer	1
22	AA85.120	Plunger Cup Retaining Nut	1
23	CB9.25-2	Reservoir	1
24	C9.37	Filler Plug Gasket	1
25	C9.22-2	Filler Plug	1

Item No.	Part No.	Part Name	No. Req.
26	CB9.20-4	Top Cap	1
27	EJ100.102	Quad Ring	1
28	J19.60	Beam	1
29	CB9.51-1	Pump Plunger	1
30	F11.53	Pump Cup	1
31	F11.52	Pump Cup Spreader	1
32	CB9.55	Pump Cup Retaining Nut	1
33	CB9.50-1	Pump Cylinder	1
34	5.75S	Pump Packing	1
35	CB9.54-1	Pump Gland Nut	1
	AJ10.011	Handle	1
	HJ100.058	Decal	1
		Blackhawk Oil No. LX21	
		5/8 Pt. (18 Cu. In.)	
		SUB-ASSEMBLIES	
	AA85.40C-3	Complete Plunger items 15 thru 22 incl.	
	CB9.50A-1	Pump Cylinder & Plunger Complete items 29 thru 35 incl.	
	CB9.51A-1	Pump Plunger Complete items 29 thru 32 incl.	
	J19.60A	Beam & Link Complete items 9, 11, 13, 28	

NOTE: Orders for parts cannot be filled unless both model and serial number stamped on side of base are given.

GUARANTEE

Blackhawk guarantees its Hand Jacks, Service Jacks and Porto-Power against defects in workmanship and material for 90 days from date of delivery to the user. Only exception is Porto-Power chain, which follows the trade custom of its manufacturers and cannot be guaranteed.

When question of warranty arises, the user should send his unit to the nearest Blackhawk Franchised Service Depot for inspection, or to the Blackhawk Service Division, 5054 W. State St., Milwaukee 8, Wis.; transportation to be prepaid and evidence of delivery date furnished.

If the difficulty comes under the terms of our guarantee, we will repair or replace parts affected and return prepaid. Our guarantee does not cover ordinary wear and tear, abuse, misuse, overloading, altered products or use of improper fluid.

A Network of FRANCHISED SERVICE DEPOTS serves Blackhawk Users worldwide

For quality workmanship with genuine Blackhawk parts select a franchised Blackhawk Service depot for your repair work. Only repairs performed by a franchised service depot displaying an official franchise service depot sign shown on the reverse side of this page, are backed with full factory guarantee. The Classified Section in your Phone Book lists your nearest Franchised Service Depot.