



Telescopic Transmission Jacks

Operating Instructions & Parts Manual

Model Number	Capacity
BH7051	1/2 Ton
BH7055 (<i>Air/Manual</i>)	1/2 Ton

SFA Companies ©2006
10939 N. Pomona Ave. Kansas City, MO 64153
816-891-6390
sales@blackhawk-automotive.com

- Before using this product, read this manual and follow all its Safety Rules and Operating Instructions

Made in Taiwan
BH7051-M0 rev 08/06

SAVE THESE INSTRUCTIONS

For your safety, *read, understand, and follow* the information provided with and on this jack. The owner and operator of this equipment shall have an understanding of this jack and safe operating procedures before attempting to use. The owner and operator shall be aware that use and repair of this product may require special skills and knowledge. Instructions and safety information shall be conveyed in the operator's native language before use of this jack is authorized. If any doubt exists as to the safe and proper use of this jack, remove from service immediately.

Inspect before each use. Do not use if there are broken, bent, cracked or damaged parts (including labels). Any jack that appears damaged in any way, or operates abnormally shall be removed from service immediately. If the jack has been or suspected to have been subjected to a shock load (a load dropped suddenly, unexpectedly upon it), immediately discontinue to use until jack has been inspected by a Blackhawk authorized service center. It is recommended that an annual inspection be done by qualified personnel. Labels and Operator's Manual are available from manufacturer.

PRODUCT DESCRIPTION

Blackhawk Hydraulic Telescopic Transmission Jacks are designed to be used as an aid in the removal and installation of automotive and light truck transmissions, transfer cases and transaxles. They are intended for use under an overhead lift or in a garage pit. For air actuated model BH7055, ensure that air source can dedicate 7.8 CFM @ 90-175 PSI. To ensure dependable, trouble free operation an inline air dryer and oiler is recommended.

SPECIFICATIONS

Model	Capacity	Min. Height	Max. Height	Saddle Spread	Base Size
BH7051	1000 lbs	37-7/8	77-5/8	11-1/2" ~ 21"	34-1/8" x 35-1/2"
BH7055*	1000 lbs	37-7/8	77-5/8	11-1/2" ~ 21"	34-1/8" x 36-1/8"

*Air / Lever Actuated Model

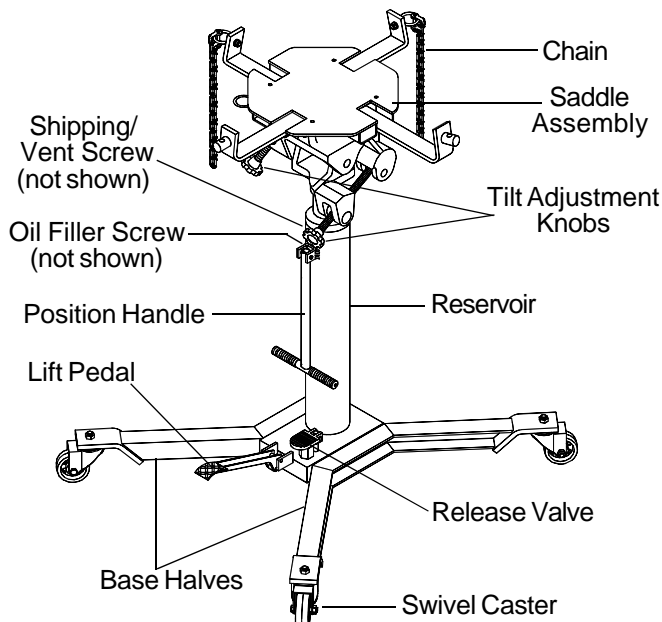


Figure 1 - Model BH7051 Nomenclature

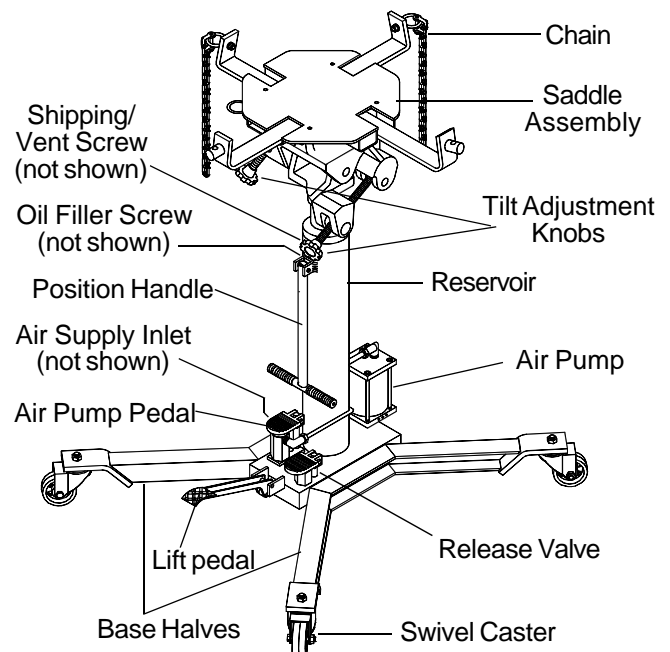


Figure 2 - Model BH7055 Nomenclature

Note: Vent Screw and Oil Filler Screw are located on the upper portion of the reservoir. See exploded drawing on pages 6 & 7.

ASSEMBLY

Refer to Figure 1, 2, 3 & 4

1. 3 major parts should be included in package:
 - (a) Hydraulic unit with pumping mechanism (with air motor equipped for Model BH7055),
 - (b) Saddle unit, and
 - (c) Two pieces of base half with bolts and washers.
2. Attach either one of the two base halves to the base of the hydraulic unit, then secure using allen head bolts and washers provided. Then apply the same procedure to the other base half. Use torque wrench to tighten to 30 lb.ft. torque. Do not overtighten.
3. Position the saddle unit above the ram piston, place the saddle socket onto the ram piston. Secure using the set screw.

SAFETY INSTRUCTIONS

BEFORE USE

1. Verify that the product and the application are compatible, if in doubt call Blackhawk Automotive Technical Service (816) 891-6390.
2. Read the operator's manual completely and familiarize yourself thoroughly with the product and the hazards associated with its improper use **before** using this product.
3. With saddle fully lowered. Remove shipping screw and replace with vent screw. (shipping screw is located on top of the oil filler screw)
4. Ensure oil level is just below the rim of the oil filler screw hole.
5. Ensure that casters move freely.
6. Check for and tighten any loose assemblies.

Air Actuated Jack only

1. Pour a teaspoon of good quality, air tool lubricant into the air supply inlet (See Figure 2). Connect to air supply and operate for 3 seconds to evenly distribute lubricant.
2. Air actuated product is fitted to accept the popular 1/4" NPT air nipple. When installing air, ensure thread sealing compound is used when servicing connections. Be careful not to allow compound to enter air supply inlet orifice. Application of thread tape is acceptable, but ensure that it is not applied beyond the first machine thread.



WARNING

- Read and understand all printed material provided with and on this product before use.
- Do not exceed rated capacity.
- Use only on hard, level, surfaces capable of supporting rated capacity loads.
- Use of this jack is limited to the removal, installation and transportation of transmissions, transfer cases and transaxles.
- Do not use a transmission jack to tilt or support a vehicle.
- Ensure the center gravity of load is centered on the saddle.
- Do not exceed 10° tilt angle of the saddle assembly in all directions.
- Use only the saddle assembly to lift. Never use any other part of the jack as a lifting surface.
- Adequately support the vehicle before starting repairs.
- Use the chain provided. If loaded jack must be moved, make certain that the load is secured by appropriate means, is stable, is in lowest position, is moved over smooth, hard, surfaces, and that the lifting platform is level.
- Do not allow any part of your body under the load while jack is supporting a load.
- This is a lifting and lowering device only. Transfer load immediately to appropriate support device for service or repair.
- Only attachmens and/or adapters supplied by the manufacturer shall be used.
- No alterations shall be made to this product.
- Failure to heed these markings may result in personal injury and/or property damage.

OPERATION

Raise saddle:

Caution! For model BH7055, **do not** operate the jack by pumping the lift pedal and pressing the air pump pedal at the same time.

1. Pump foot pedal or press air pump pedal (Model BH7055) until saddle reaches desired position.
2. Follow vehicle manufacturers recommended procedures for removing the load as outlined in vehicle service manual or repair guide.
3. Secure load with provided chains. Ensure load's center of gravity is centered on the saddle and load is stable before moving jack.

Lower saddle:

Caution! Be sure all tools and personnel are clear before lowering load.

Slowly, gently apply downward pressure to the pedal located just above and forward of the lift pedal.



MAINTENANCE

Important: Use only good grade hydraulic jack oil. Avoid mixing different types of fluid and **NEVER** use brake fluid, turbine oil, transmission fluid, motor oil or glycerin. Improper fluid can cause premature failure of the jack and the potential for sudden and immediate loss of load. We recommend Hein-Werner HW93291 or equivalent.

On air actuated model, periodically check for leaks at air connections. Replace connections as needed.

Adding oil

1. With saddle fully lowered, set jack in its upright, level position. Remove oil filler screw.
2. Fill until oil is level with the oil filler screw hole, reinstall oil filler screw.

Changing oil

For best performance and longest life, replace the complete fluid supply at least once per year.

1. With saddle fully lowered, set jack in its upright, level position. Remove the oil filler screw.
2. Lay the jack on its side and drain the fluid into a suitable container.

Note: Dispose of hydraulic fluid in accordance with local regulations.

3. Set jack in its level upright position and fill with good quality jack oil.
4. Reinstall the oil filler screw.

Lubrication

1. A periodic coating of light lubricating oil to moving parts will help to prevent rust and assure that casters and pump assemblies move freely.
2. When used on a daily basis, air pump model should be internally lubricated before each use. Use **only** good quality air tool lubricant. If no inline oiler is used, pour a teaspoon of air tool oil into the inlet of the air supply inlet. Simply operate the jack using the air feature in order to fully distribute the oil.

Cleaning

Periodically check the ram for signs of rust or corrosion. Clean as needed and wipe with an oily cloth.

Note: Never use sandpaper or abrasive material on these surfaces !

Storage

When not in use, store the jack with saddle in lowest position and air supply disconnected.

TROUBLESHOOTING

Symptom	Possible Causes	Corrective Action
Jack will not lift load	<ul style="list-style-type: none">• Air supply inadequate (Model BH7055 only)• Hydraulic unit malfunction	<ul style="list-style-type: none">• Ensure adequate air supply (Model BH7055 only)• Contact Blackhawk Tech. Service
Jack bleeds off after lift	<ul style="list-style-type: none">• Overload condition• Hydraulic unit malfunction	<ul style="list-style-type: none">• Remedy overload condition• Contact Blackhawk Tech. Service
Jack will not lower after unloading	<ul style="list-style-type: none">• Reservoir overfilled• Linkage binding	<ul style="list-style-type: none">• Drain fluid to proper level• Clean and lubricate moving parts
Poor lift performance	<ul style="list-style-type: none">• Fluid level low	<ul style="list-style-type: none">• Ensure proper fluid level
Will not lift to full extension	<ul style="list-style-type: none">• Fluid level low	<ul style="list-style-type: none">• Ensure proper fluid level

REPLACEMENT PARTS

Not all components of the jack are replacement items, but are illustrated as a convenient reference of location and position in the assembly sequence. When ordering parts, give Model number, parts number and description on page 6 & 7. Call or write for current pricing: SFA Companies 10939 N. Pomona Ave. Kansas City MO 64153, U.S.A.

Tel:(816) 891-6390 Fax: (816) 891-6599 E-Mail: sales@blackhawk-automotive.com

BH7051 Replacement parts

Item	Part#	Description	Qty
1	324-4-1900-208	Screw Assembly	2
2	G36-6-1804-102	Vent Screw Assembly	1
3	G36-3-1900-100	Lift Pedal	1
4	G36-6-1809-102	Release Valve Pedal	1
5	G36-3-5000-104	Caster w/o Brake	2
6	G36-3-5001-106	Caster w/ Brake	2
7	G36-3-2300-101	Tilt Screw Assembly	1
8	G36-3-2301-103	Tilt Screw Assembly	1
9	G36-3-0513-108	Accessory Kit	2
10	G36-4-4200-10308	Saddle Assembly (chain not included)	1
11	G36-3-0511-104	Bolt Set	1
12	G36-3-3301-108	Base Half	2
13	G36-3-2100-103	Handle Assembly	1
-	G36-3-9902-104	Repair Kit for Hydraulic Unit	-
-	BH7051-L0	Product Label	-
-	BH7051-M0	Manual	-

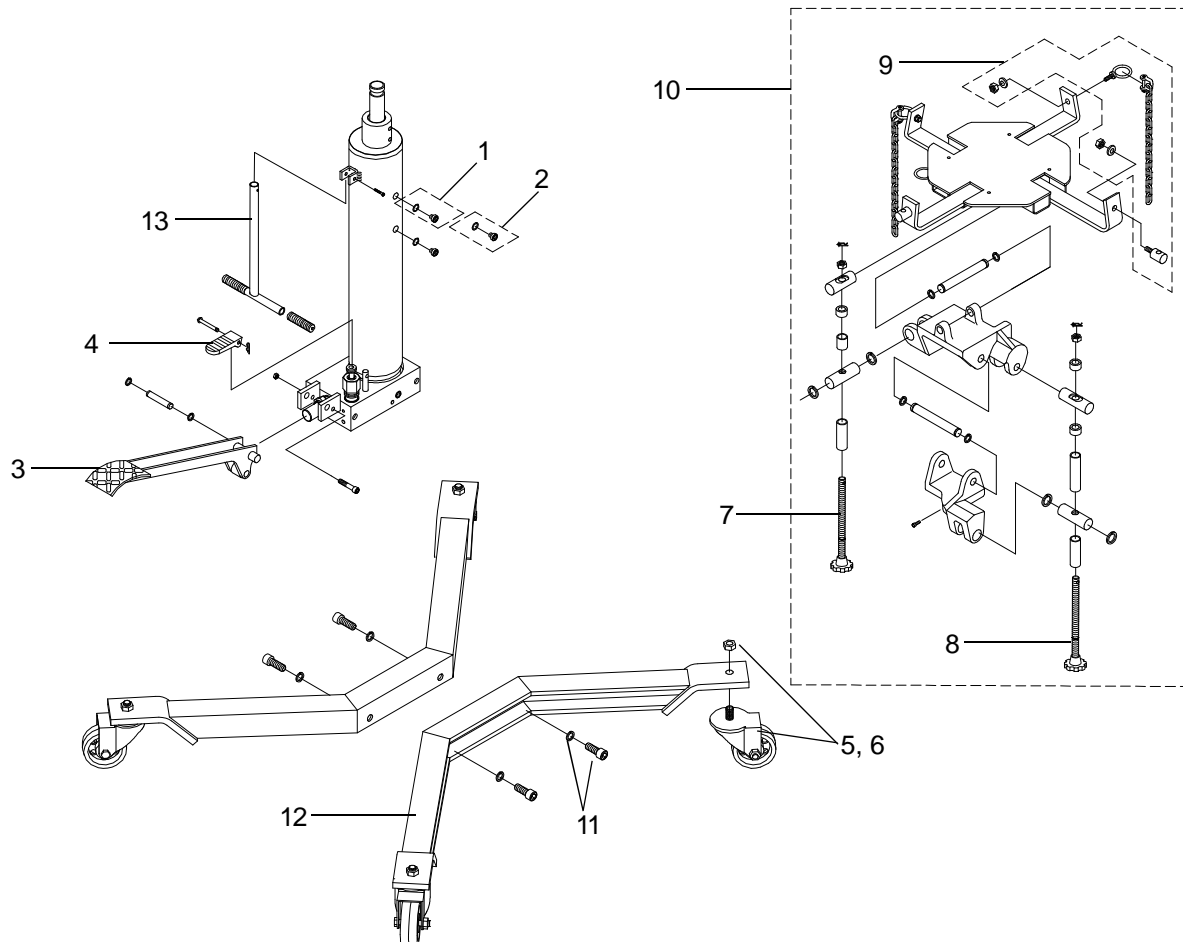


Figure 3 - Replacement Parts Illustration for Model BH7051

BH7055 Replacement parts

Item	Part#	Description	Qty
1	324-4-1900-208	Screw Assembly	2
2	G36-6-1804-102	Vent Screw Assembly	1
3	G36-3-1900-100	Lift Pedal	1
4	G36-6-1809-102	Release Valve/ Air Pump Pedal	2
5	G36-3-5000-104	Caster w/o Brake	2
6	G36-3-5001-106	Caster w/ Brake	2
7	G36-3-2300-101	Tilt Screw Assembly	1
8	G36-3-2301-103	Tilt Screw Assembly	1
9	G36-3-0513-108	Accessory Kit	2
10	G36-4-4200-10308	Saddle Assembly (chain not included)	1
11	G36-3-0511-104	Bolt Set	1
12	G36-3-3301-108	Base Half	2
13	G36-3-2100-103	Handle Assembly.	1
14	A24-6-8101-107	Male Coupler	1
15	G36-4-2000-105	Air Motor	1
16	G36-6-2302-103	Hose Connector	2
17	G36-6-2300-109	Air Hose	1
-	G36-3-9902-104	Repair Kit for Hydraulic Unit	-
-	BH7055-L0	Product Label	-
-	BH7051-M0	Manual	-

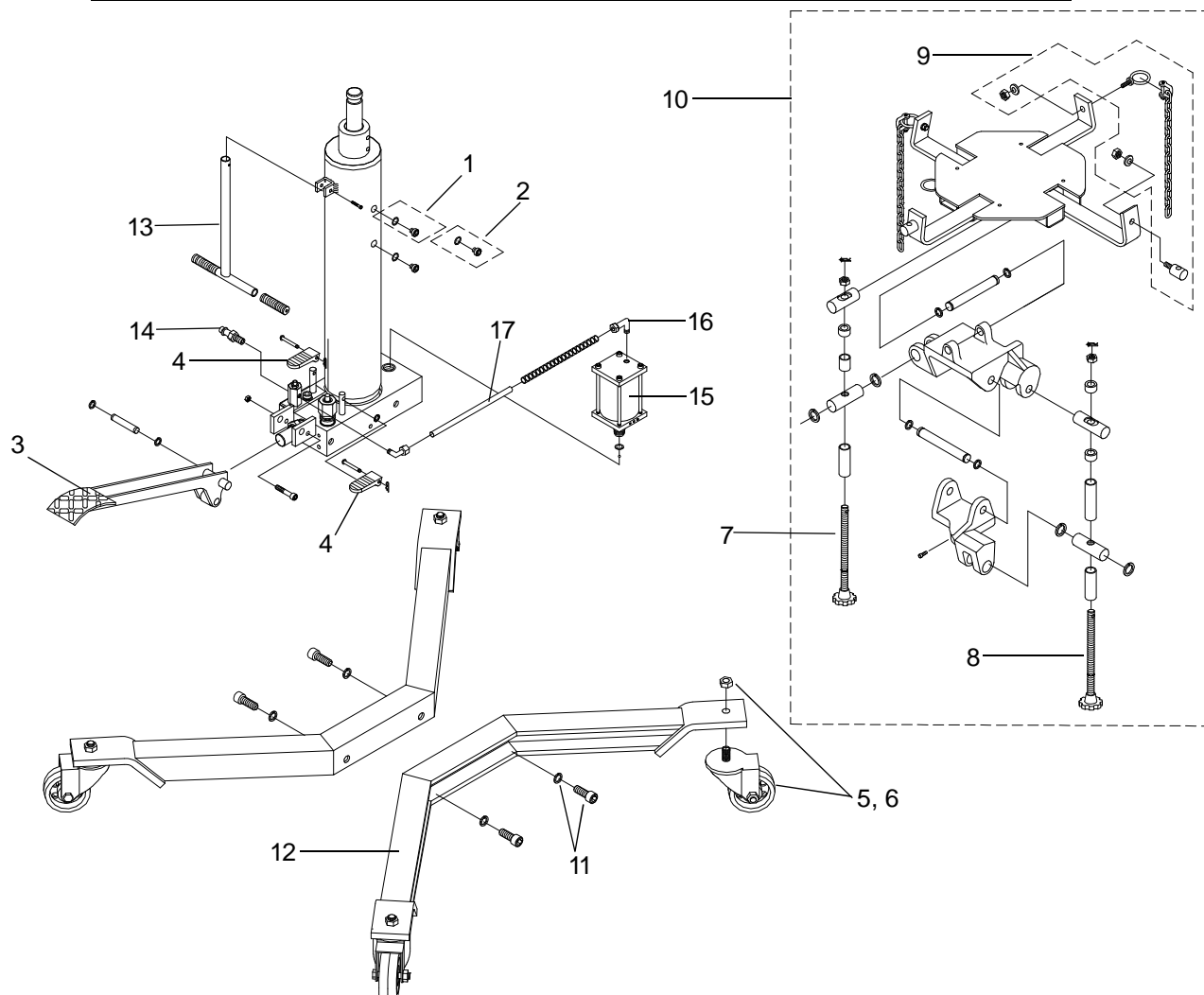


Figure 4 - Replacement Parts Illustration for Model BH7055



ONE YEAR LIMITED WARRANTY

For a period of one (1) year from date of purchase, SFA Companies will repair or replace, at its option, without charge, any of its products which fails due to a defect in material or workmanship under normal usage. This limited warranty is a consumer's exclusive remedy.

Performance of any obligation under this warranty may be obtained by returning the warranted product, freight prepaid, to SFA Companies Warranty Service Department, 10939 N. Pomona Ave., Kansas City, MO 64153.

Except where such limitations and exclusions are specifically prohibited by applicable law.

(1) THE CONSUMER'S SOLE AND EXCLUSIVE REMEDY SHALL BE THE REPAIR OR REPLACEMENT OF DEFECTIVE PRODUCTS AS DESCRIBED ABOVE.

(2) SFA COMPANIES SHALL NOT BE LIABLE FOR ANY CONSEQUENTIAL OR INCIDENTAL DAMAGE OR LOSS WHATSOEVER.

(3) ANY IMPLIED WARRANTIES, INCLUDING WITHOUT LIMITATION THE IMPLIED WARRANTIES OF MERCHANTABILITY AND FITNESS FOR A PARTICULAR PURPOSE, SHALL BE LIMITED TO ONE YEAR, OTHERWISE THE REPAIR, REPLACEMENT OR REFUND AS PROVIDED UNDER THIS EXPRESS LIMITED WARRANTY IS THE EXCLUSIVE REMEDY OF THE CONSUMER, AND IS PROVIDED IN LIEU OF ALL OTHER WARRANTIES, EXPRESS OR IMPLIED.

(4) ANY MODIFICATION, ALTERATION, ABUSE, UNAUTHORIZED SERVICE OR ORNAMENTAL DESIGN VOIDS THIS WARRANTY AND IS NOT COVERED BY THIS WARRANTY.

Some states do not allow limitations on how long an implied warranty lasts, so the above limitation may not apply to you. Some states do not allow the exclusion or limitation of incidental or consequential damages, so the above limitation or exclusion may not apply to you. This warranty gives you specific legal rights, and you may also have other rights which vary from state to state.