



APPLIED POWER
INC

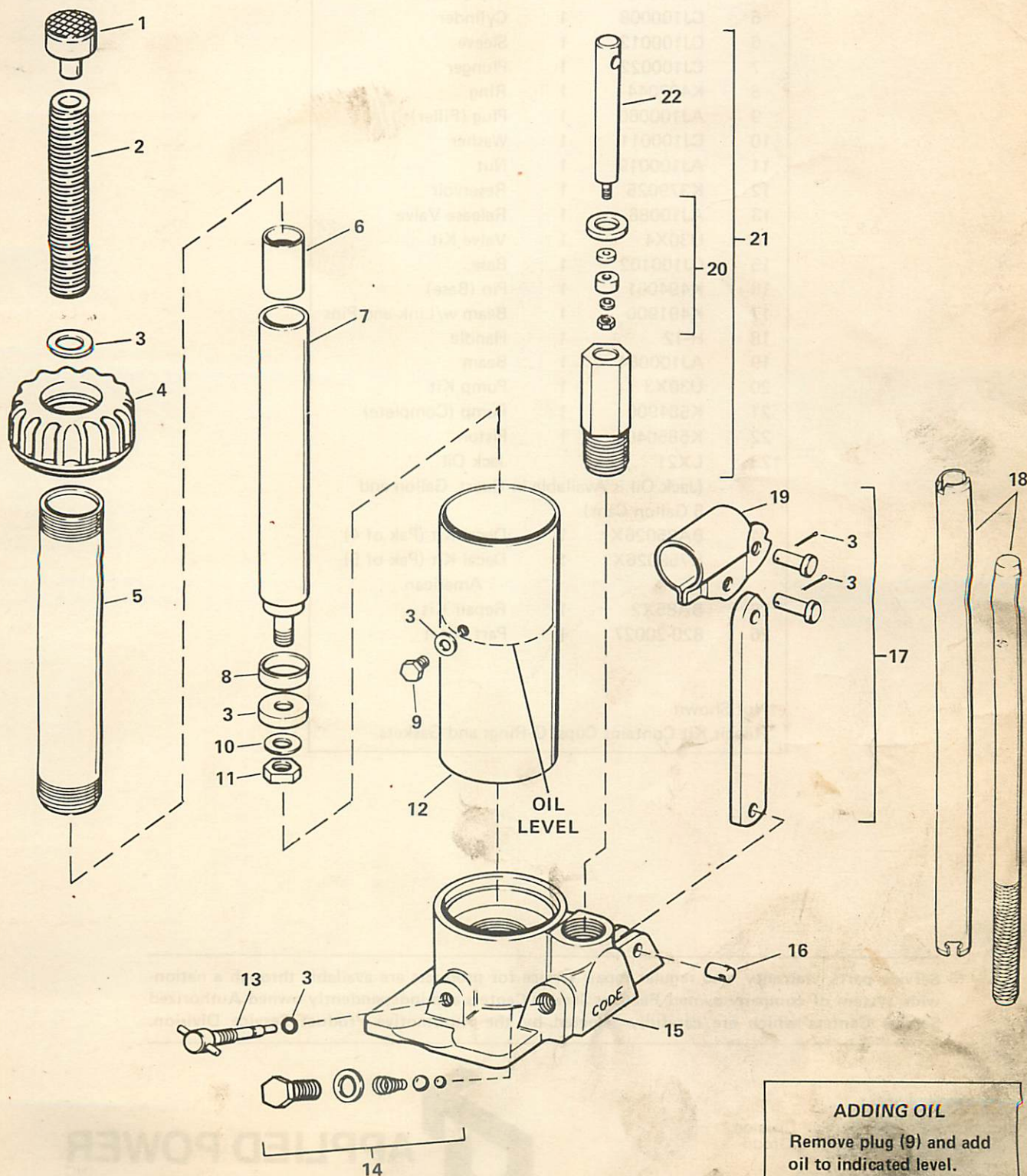
Lifting Equipment

Automotive Product Service Division

MODEL AMERICAN AH-309E
BLACKHAWK BA-85H

ISSUED AUGUST 9, 1974
SUPERSEDES PS-520/PS-625

**HAND JACK
CAPACITY: 3 TONS**



ADDING OIL

Remove plug (9) and add oil to indicated level.

REPAIR PARTS LIST

Item No.	Part No.	No. Req.	Description
1	CJ100013	1	Saddle
2	CJ100006	1	Adj. Screw
3	BA85X2	1	Repair Kit*
4	K527020	1	Cap (Crown)
	K516020	1	Cap (Hex)
5	CJ100008	1	Cylinder
6	CJ100012	1	Sleeve
7	CJ100022	1	Plunger
8	K497044	1	Ring
9	AJ100060	1	Plug (Filler)
10	CJ100011	1	Washer
11	AJ100019	1	Nut
12	K379025	1	Reservoir
13	AJ10086	1	Release Valve
14	U30X4	1	Valve Kit
15	CJ100102	1	Base
16	K494061	1	Pin (Base)
17	K491900	1	Beam w/Link and Pins
18	H-12	1	Handle
19	AJ100064	1	Beam
20	U30X3	1	Pump Kit
21	K584900	1	Pump (Complete)
22	K585040	1	Piston
†23	LX21		Jack Oil
	(Jack Oil is Available in Quart, Gallon and 5 Gallon Cans)		
24	BA85026X	1	Decal Kit (Pak of 4)
	K758026X	1	Decal Kit (Pak of 5)
			American
*25	BA85X2	1	Repair Kit
26	820-20027	1	Part Sheet

†Not Shown
 *Repair Kit Contains Cups, O-Rings and Gaskets

Service parts, warranty, and regular repair service for products are available through a nationwide system of company-owned Factory Service Centers and independently-owned Authorized Service Centers which are carefully selected by the Automotive Product Service Division.

Automotive Product Service Division
 Automotive Service Systems Group
 P.O. Box 7580
 Milwaukee, Wisconsin 53222



APPLIED POWER
 INC.