



**LIFTING  
EQUIPMENT**

**CATEGORY A**

**820-31075**

**PUBLICATION NO.**

**REPAIR PARTS LIST  
FOR  
CAR AND LIGHT TRUCK  
MOBILE LIFT**

**BRAND NAME**

**CAPACITY**

**MODEL NUMBER**

**BLACKHAWK  
BLACKHAWK**

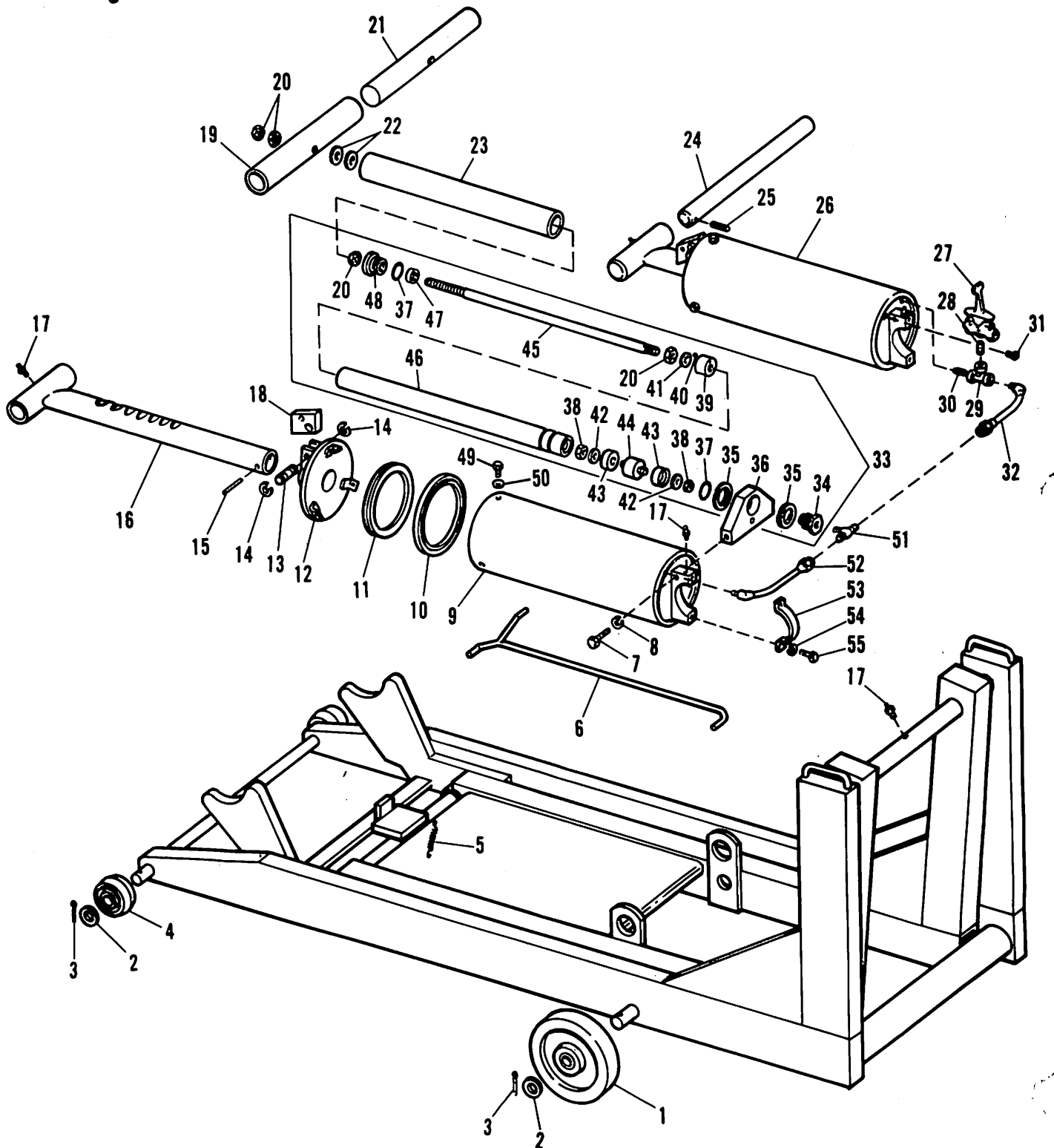
**1½ Tons  
1½ Tons**

**67442  
ML-41**



# TRI-CITY HYDRAULIC JACK SERVICE

4628 N. Florida Avenue  
Tampa, Florida 33603-3700  
(813) 232-1280



ITEM NO.	PART NUMBER	QUANTITY	DESCRIPTION
1	E851.106	2	Wheel, Rear
2	E189.108	4	Washer
3	E861.061	4	Pin
4	J150.106	2	Wheel, Front
5	J252.110	1	Spring
6	K419.149	1	Rod
7	B517.247	2	Screw
8	K244.108	2	Washer
9	K405.030	2	Tank
*10	K52.041	2	Cup
11	K413.051	2	Piston
12	K406.020	2	Cap
13	K435.061	2	Pin
14	A434.523	4	Ring
15	A812.261	2	Pin
16	K415.149	2	Rod
17	J154.096	5	Fitting (Grease)
18	K431.002	2	Pawl
19	K441.104	1	Shaft, Outer
20	D235.055	4	Nut
21	K440.104	1	Shaft, Inner
22	E50.108	2	Washer
23	K425.098	1	Cover
24	K408.104	1	Shaft
25	A804.061	1	Pin
26	K396.900	2	Tank Assembly
27	K91.900	1	Valve
28	FZ-1608	1	Nipple, 1/4" x 1/2"
29	K442.096	1	Tee
30	FZ-1647	1	Nipple, 1/4" x 7/8"
31	B714.245	2	Plug
32	K4.646	1	Hose, 5-7/8"
33	K399.900	1	Damper
34	K130.020	1	Cap
35	K446.044	2	Ring
36	K438.111	1	Bracket
*37	K106.041	2	"O" Ring
38	EJ100.014	2	Nut
39	K128.051	1	Piston
*40	S4.156	1	Ball
41	S1119	1	Washer
42	EJ100.012	2	Washer
*43	D385.041	2	Cup
44	K129.071	1	Piston
45	K424.149	1	Rod
46	K423.030	1	Cylinder
*47	K125.041	1	Cup
48	K422.020	1	Cap
49	K6.028	6	Bolt
50	B678.108	6	Washer
51	K444.096	1	Tee
52	K443.646	1	Hose, 6-3/4"
53	E852.017	2	Strap
54	S4.139	4	Washer
55	D244.028	4	Screw
†	K33.064		Kit, Decal Model
†	E740.026		Decal, Repair
†	A559.026-1	1	Decal, Caution
†	E704.026-1	1	Decal, Caution
*†	67442X		Kit, Repair



**TRI-CITY HYDRAULIC JACK SERVICE**  
 4628 N. Florida Avenue  
 Tampa, Florida 33603-3700  
 (813) 232-1280

† Not Shown

\* Items Included in Kit are Marked with Asterisk



---

Service parts, warranty, and regular repair service for products are available through a nationwide system of company-owned Factory Service Centers and independently-owned Authorized Service Centers which are carefully selected by the Automotive Division.

---

Should additional assistance be required, please contact:

Automotive Division  
APPLIED POWER INC.  
P.O. Box 27207  
Milwaukee, Wisconsin 53227