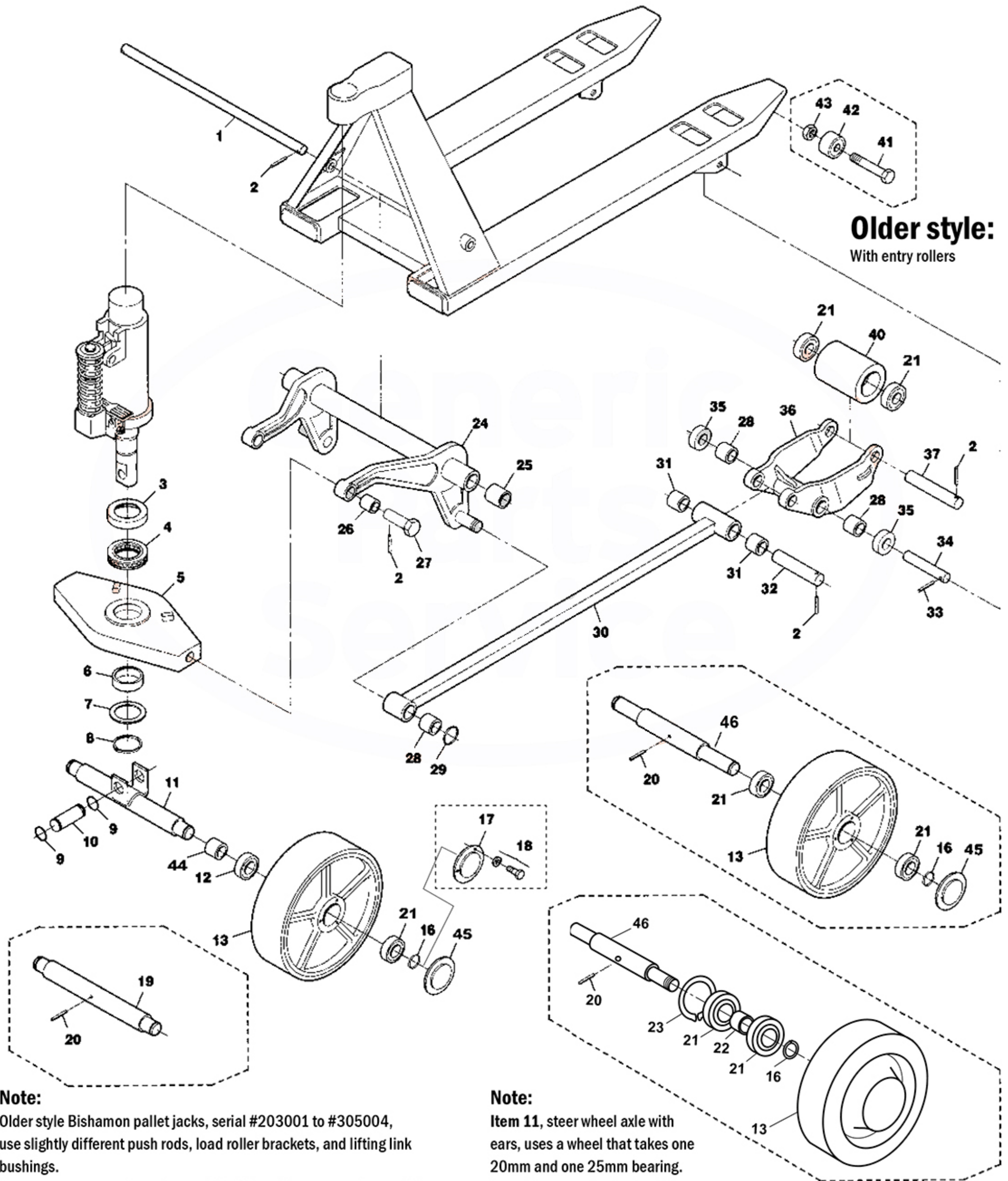


# Bishamon BS-55 Frame



**Older style:**  
With entry rollers

## Note:

Older style Bishamon pallet jacks, serial #203001 to #305004, use slightly different push rods, load roller brackets, and lifting link bushings.

**These parts are not interchangeable.** Please be sure you know which jack you have before ordering parts. The easiest way to tell, besides the serial number, is older style jacks have entry rollers (item 42).

## Note:

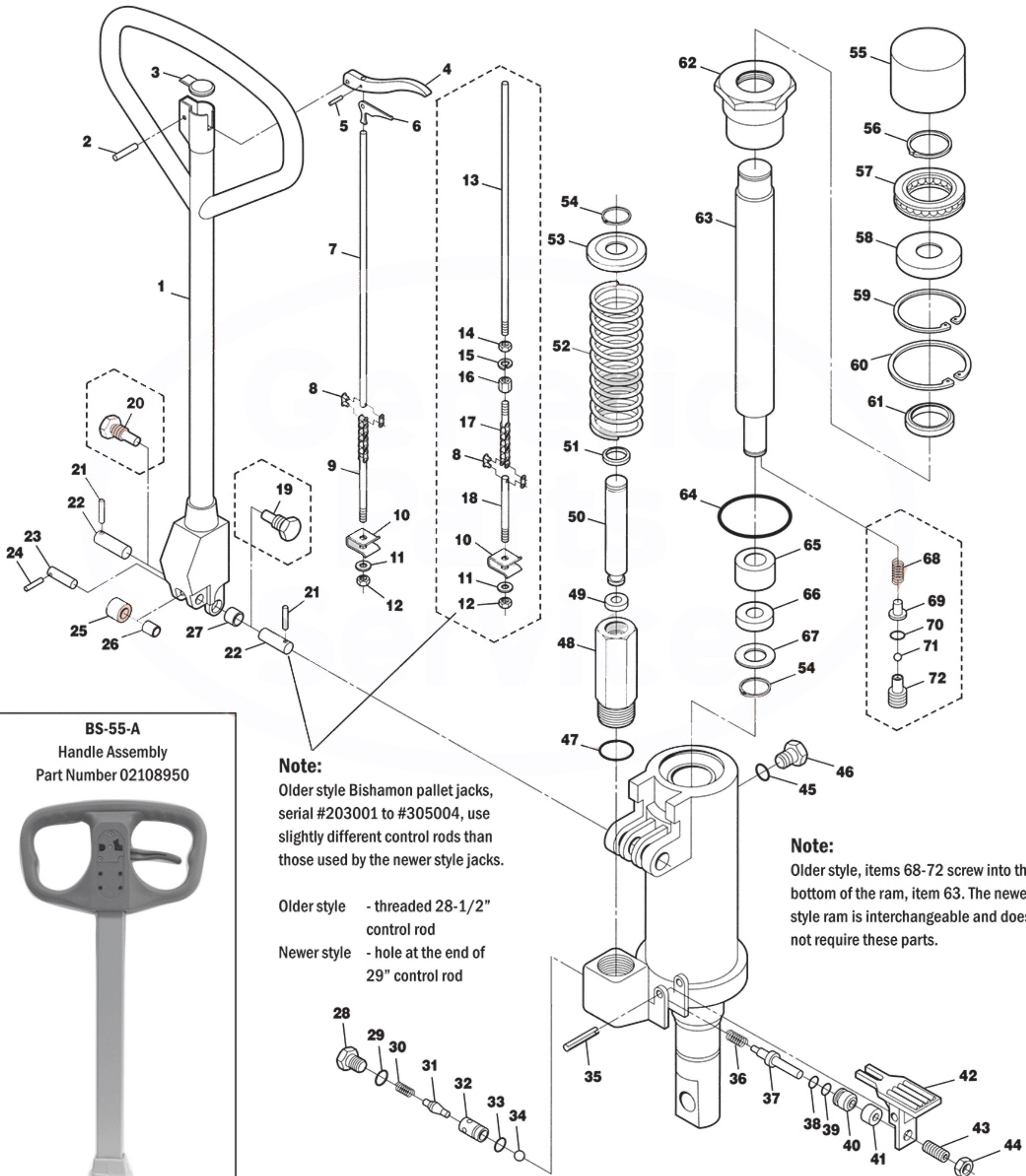
**Item 11**, steer wheel axle with ears, uses a wheel that takes one 20mm and one 25mm bearing.

**Item 19**, steer wheel axle with no ears, uses a wheel that takes one 20mm and one 25mm bearing.

**Item 46**, steer wheel axle, uses a wheel that takes two 20mm bearings.



# Bishamon BS-55 Hydraulic Unit



The older style, part number HU BI BS-55-0, uses the steer wheel axle with ears, part number 02103774.  
The newer style, HU BI BS-55-1, uses the steer wheel

axle without ears, part number 12003710-1 or 12003710-2. Please be sure to take note of which hydraulic unit you need before ordering.