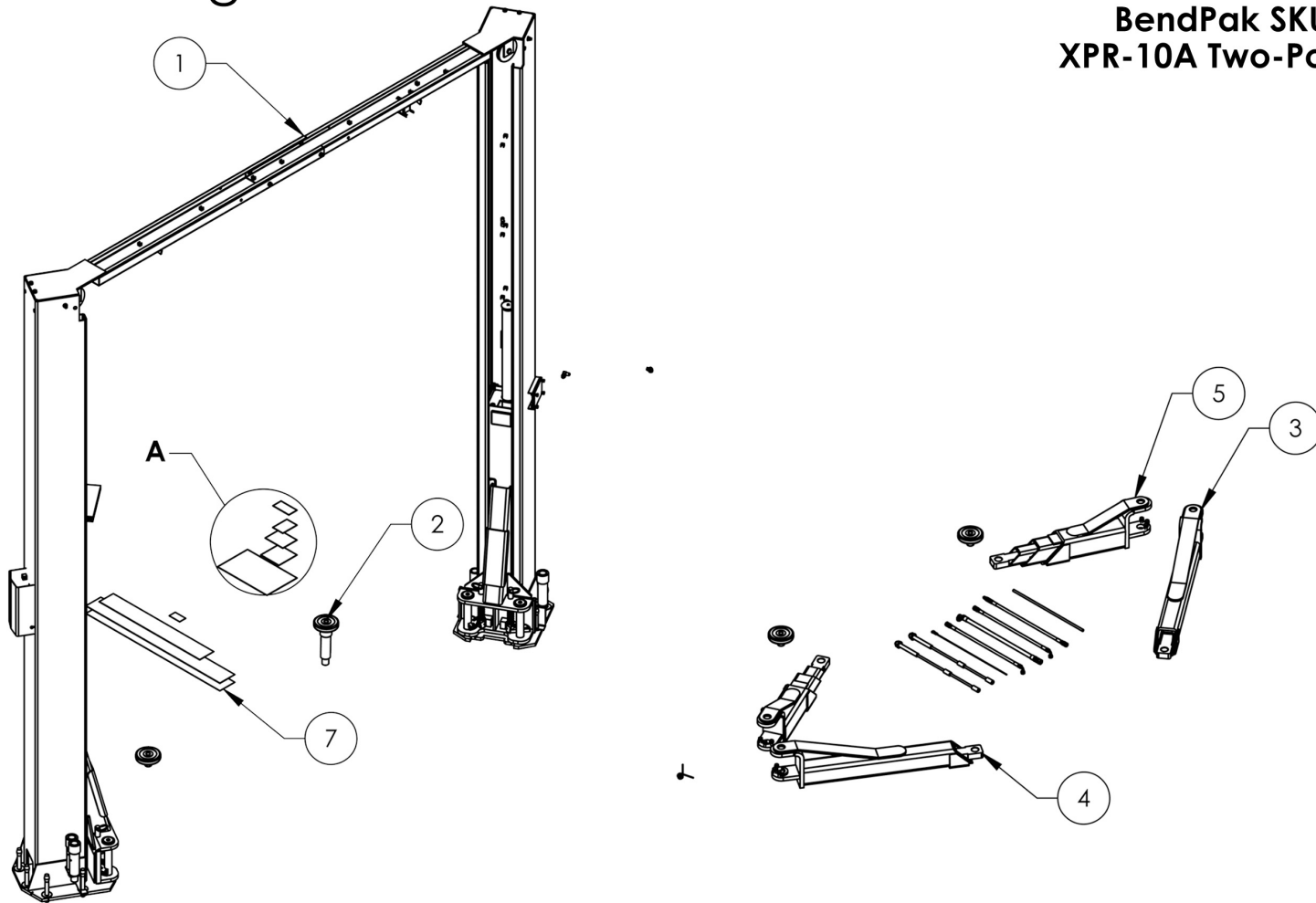


Service Manual

Service Parts & Diagrams

XPR-10A

BendPak SKU 5175770
XPR-10A Two-Post Car Lift
Version E
05/21/15



This guide is a troubleshooting reference used for maintaining and servicing your BendPak product. It provides comprehensive information on identifying serviceable parts and components and assists in troubleshooting problems and performing assembly/disassembly procedures.



BendPak, Inc. Corporate Office

1645 Lemonwood Drive
Santa Paula, CA 93060 USA
Toll Free US/Canada: 1-800-253-2363
Fax: 1-805-933-9160
info@bendpak.com

Customer Service Desk / Warranty

Customer Service Representatives
Office Tel: 1-805-933-9970
Toll Free US/Canada: 1-800-253-2363
Fax: 1-805-933-9160
customerservice@bendpak.com

Parts Orders

Customer Service Representatives
Office Tel: 1-805-933-9970
Toll Free US/Canada: 1-800-253-2363
Fax: 1-805-933-9160
parts@bendpak.com

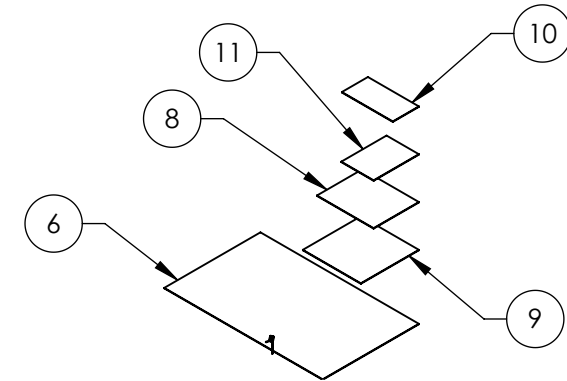
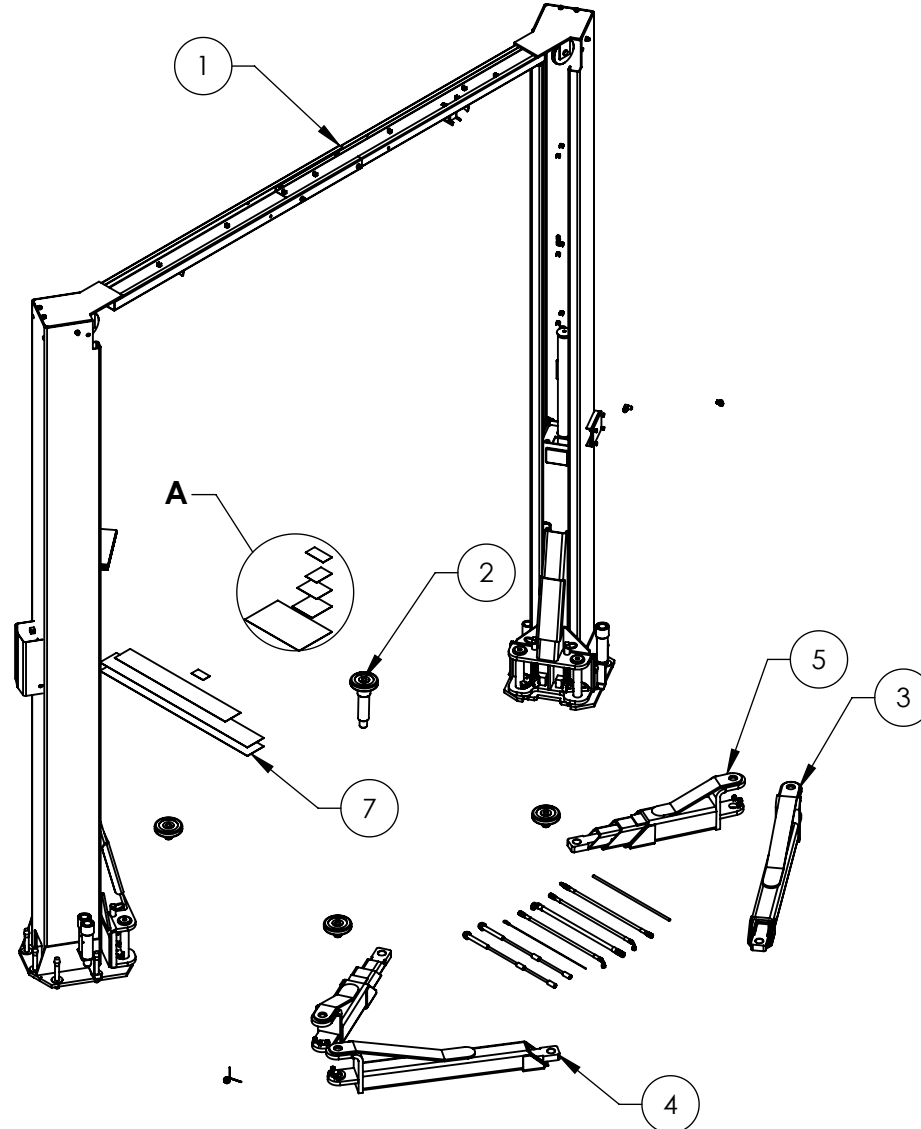
Domestic Sales & Service

USA Sales Representatives
Office Tel: 1-805-933-9970
Toll Free US/Canada: 1-800-253-2363
Fax: 1-805-933-9160
sales@bendpak.com

International Sales & Service



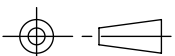
Office Tel: 1-805-933-9970
Exports Department: 1-805-933-9970 Ext. 192
Toll Free US/Canada: 1-800-253-2363
Fax: 1-805-933-9160
bpkexports@bendpak.com

		REVISION			
REV	DESCRIPTION	DATE	EDITED BY	ECO#	
A	PRODUCTION RELEASE, DERIVED FROM 5260455	10/08/2014	TM	00663	
B	REPLACED 5250056 WITH 5250003, UPDATED BOM REVISIONS	11/24/2014	TM	00673	
C	ADDED 5905109, 5905131, 5905403, 5905465, 5905940, 5930630, UPDATED BOM REVISIONS	05/15/2015	TM	00689	



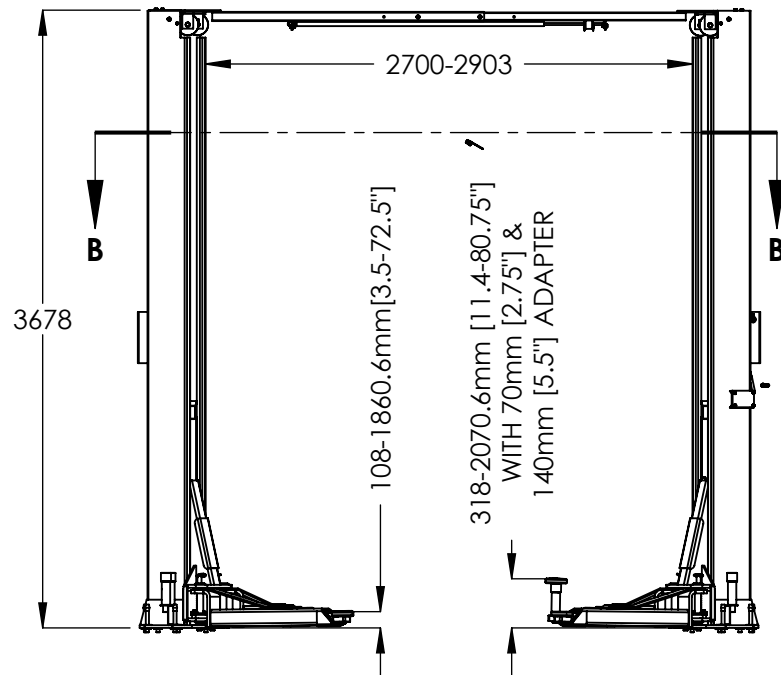
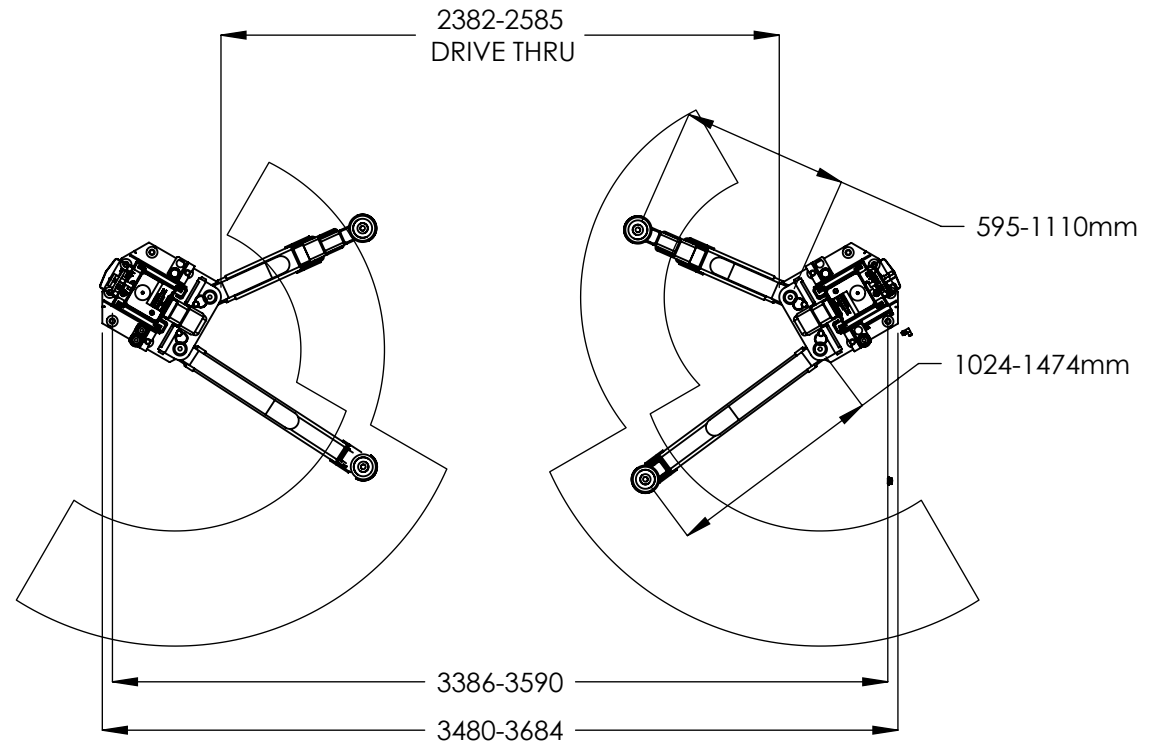
DETAIL A
SCALE 1 : 12

ITEM NO	PART NUMBER	DESCRIPTION	QTY	REV
1	5245044	XPR-7A/10A LIFT SUPERSTRUCTURE	1	C
2	5250003	XPR-10A PARTS BOX	1	B
3	5210369	XPR-7A/10A LOW PROFILE LONG ARM ASSEMBLY, R.H.	1	C
4	5210171	XPR-7A/10A LOW PROFILE LONG ARM ASSEMBLY, L.H.	1	J
5	5210170	XPR-7A/10A LOW PROFILE TRIPLE TELESCOPING ARM ASSEMBLY	2	K
6	5905109	WARNING ATT/WL 101	1	-
7	5905131	2 POST DECAL KIT, LESS ALL	1	B
8	5905403	MAX CAP DANGER 10K	1	-
9	5905465	MANUFACTURER LABEL	1	-
10	5905940	PRODUCT DATA LABEL	1	-
11	5930630	XPR-10A SERIAL TAG	1	-


DO NOT SCALE DRAWING		NAME	DATE	 BendPak. 1645 LEMONWOOD DR. SANTA PAULA, CA 93060	
DRAWN		TM	10/08/2014		
CHECKED				TITLE: XPR-10A PRODUCTION LIFT VER E	
THIRD ANGLE PROJECTION					
DIMENSIONS ARE IN MM 				SIZE DWG. NO. REV	
	PROPRIETARY AND CONFIDENTIAL THE INFORMATION CONTAINED IN THIS DRAWING IS THE SOLE PROPERTY OF BENDPAK INC. ANY REPRODUCTION IN PART OR AS A WHOLE WITHOUT THE WRITTEN PERMISSION OF BENDPAK INC. IS PROHIBITED.			A 5260088 C	
				SCALE: 1:35 SHEET 1 OF 2	

NOTE: UNLESS OTHERWISE SPECIFIED.

1. SEE SHIPPING INSTRUCTIONS FOR FINAL PACKAGING
2. ALL LABELS TO BE APPLIED TO POSTS AFTER PAINTING. SEE ATTACHED LABEL PLACEMENT SHEET.
3. 5930630 TO BE ADDED BY REQUEST ONLY



SECTION B-B
SCALE 1 : 35

 BendPak. 1645 LEMONWOOD DR. SANTA PAULA, CA 93060 <small>HOISTING AUTOMATIC SERVICE SOLUTIONS</small>		
TITLE: XPR-10A PRODUCTION LIFT VER E		
SIZE	DWG. NO.	REV
A	5260088	C
SCALE: 1:45		SHEET 2 OF 2

A

**B**

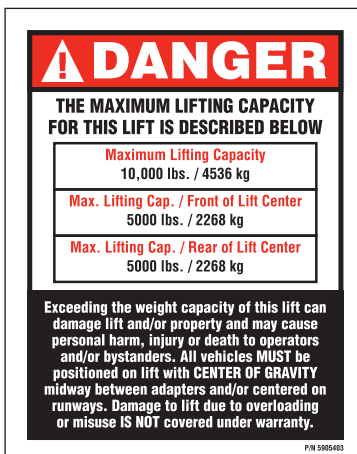
***Place on back of Powerside Post.**

PN 5905311

PN 5905555

2-Post Lifts Product Decal Positioning

C



***Depends on Lift model capacity**

***Max. Cap. Danger.pdf:**

Size: 4"W x 5"H

Material: White Vinyl Pressure Sensitive Adhesive

Thickness: 4 Mil

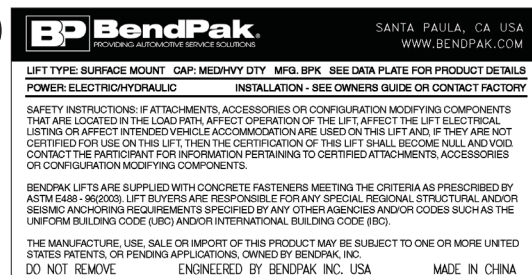
Ink: U.V. protected CMYK 2/C Process

Finish: Polished

Print Process: Offset Lithography - 200 line-screen or 300 p.p.i. for digital

Lamination: Clear-gloss over-laminate for abrasion, chemical, and ultra violet protection

D



Product Data Label.pdf:

PN 5905940

Size: 4.5"W x 2.3"H

Material: White Vinyl Pressure Sensitive Adhesive

Thickness: 4 Mil

Ink: U.V. protected CMYK 2/C Process

Finish: Polished

Print Process: Offset Lithography - 200 line-screen or 300 p.p.i. for digital

Lamination: Clear-gloss over-laminate for abrasion, chemical, and ultra violet protection

E



ALI Blue

F



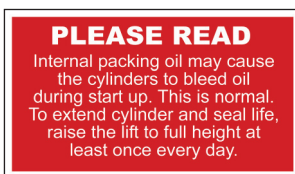
ALI Yellow

G



ALI Orange

H



PN 5905177

***Place on both Posts.**

LR-60_Warning_Instructions_Label.pdf:

Size: 3"W x 1.75"H

Material: White Vinyl Pressure Sensitive Adhesive

Thickness: 4 Mil

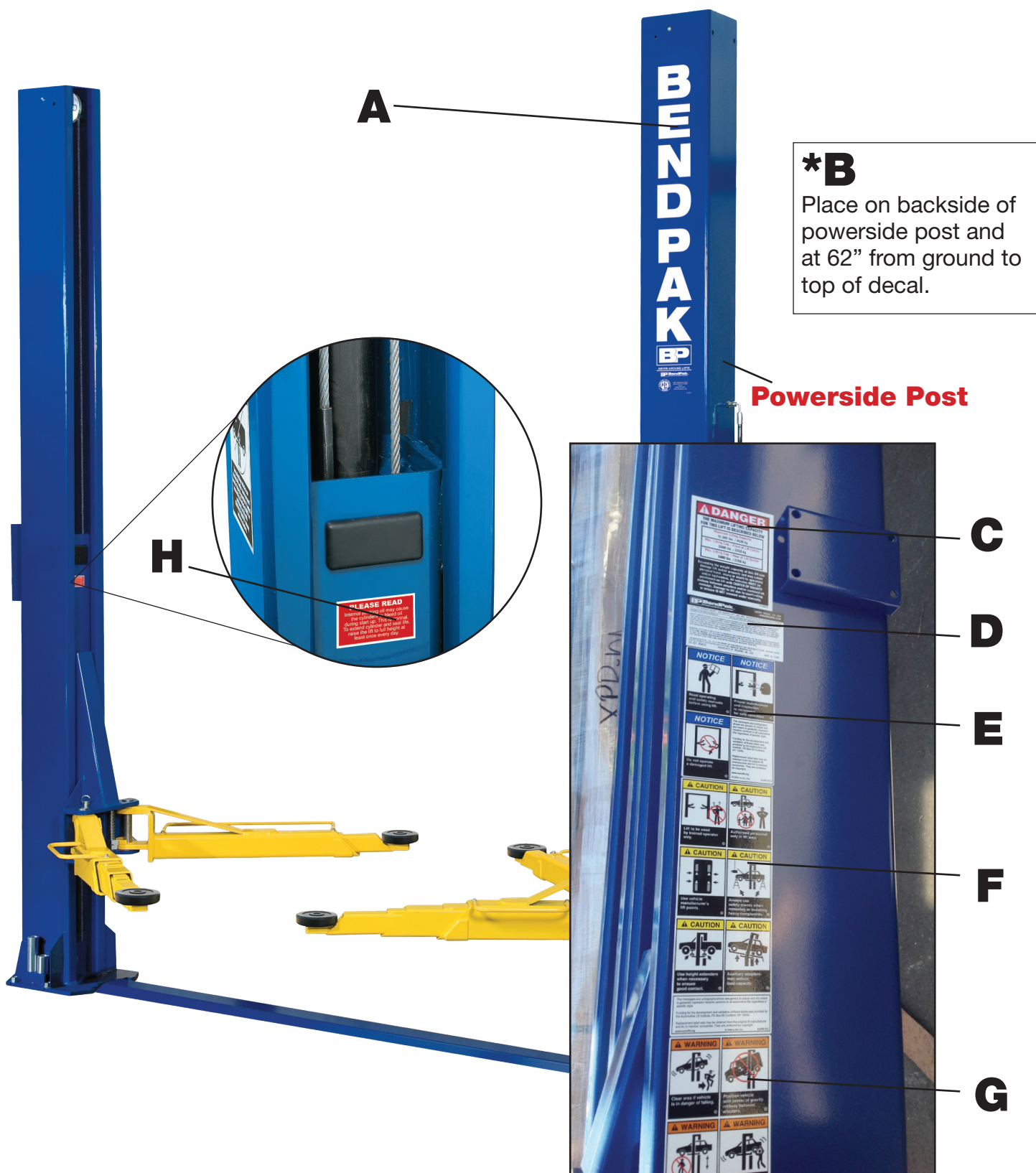
Ink: U.V. protected CMYK 2/C Process

Finish: Polished

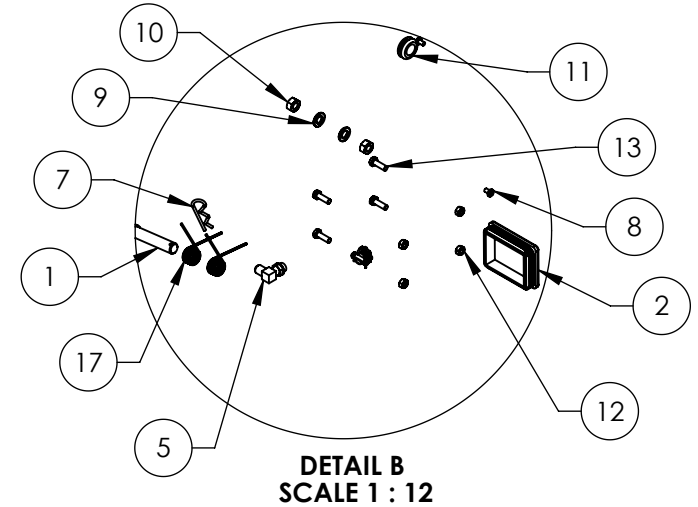
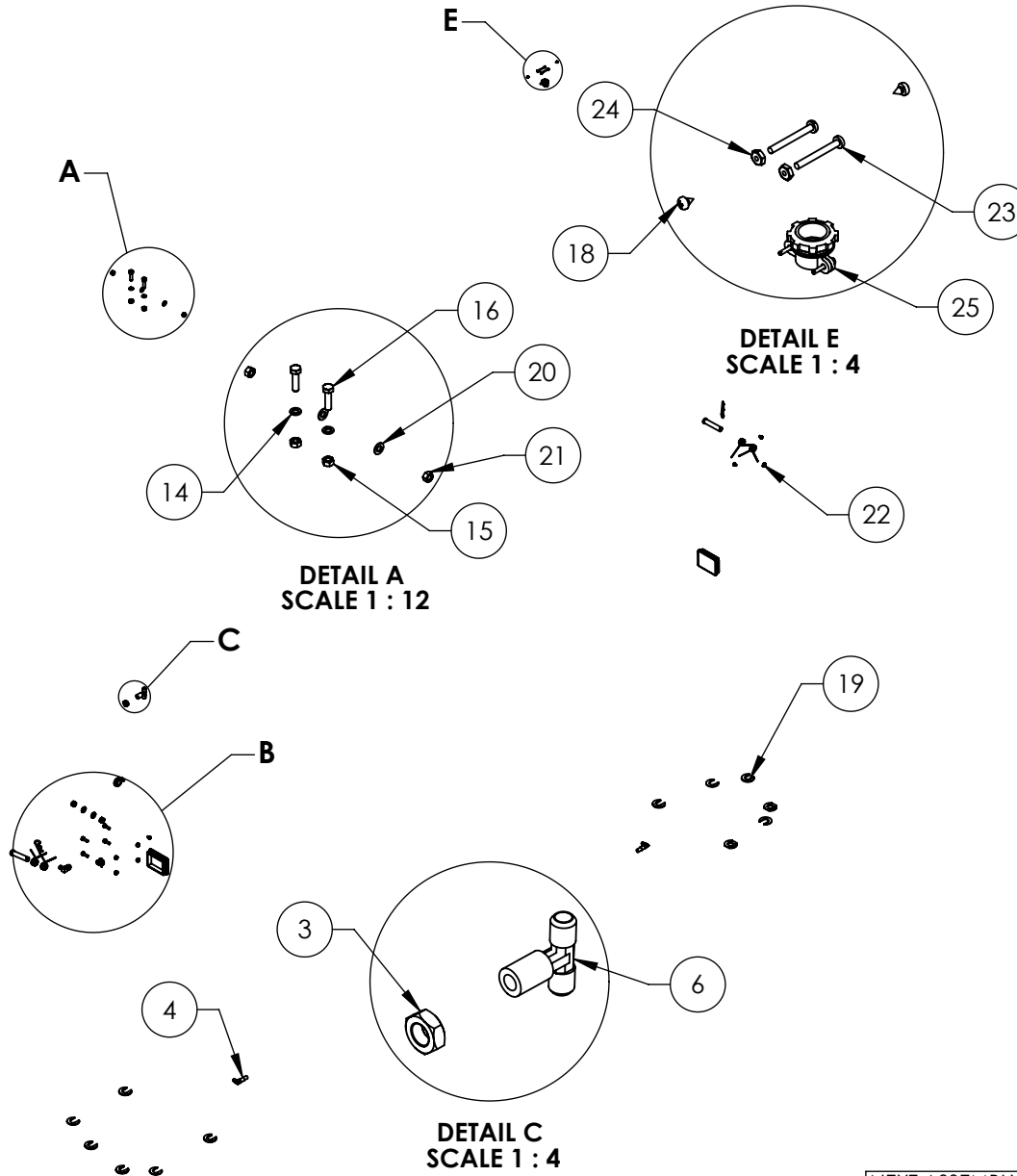
Print Process: Offset Lithography - 200 line-screen or 300 p.p.i. for digital

Lamination: Clear-gloss over-laminate for abrasion, chemical, and ultra violet protection

2-Post Lifts Product Decal Positioning



REVISION				
REV	DESCRIPTION	DATE	EDITED BY	ECO#
G	ADDED (2) 5540075, REPLACED 5530314 WITH 5530261, REPLACED 5540001 WITH 5540075, UPDATED TITLE TO REFLECT WHERE USED, UPDATED BOM REVISION AND NEXT ASSEMBLIES	06/17/2013	TM	00605
H	UPDATED BOM REVISION	06/02/2014	TM	00649
J	REPLACED 5505113 WITH 5505001, UPDATED NEXT ASSEMBLY	10/06/2014	TM	00663



ITEM NO	PART NUMBER	DESCRIPTION	QTY	REV
1	5505001	GP-7/PI-6000/XPR SERIES SAFETY CLEVIS PIN	2	A
2	5715196	XPR PLASTIC COVER BLOCK 105 x 80	2	C
3	5535022	NUT 9/16"-18 JN	1	-
4	5550113	FTG ELB -04 NPT L x -04 JIC	2	-
5	5550183	FTG ELB -06 JIC -06L ORB	1	-
6	5550003	FTG TEE -04 JIC -04 JIC -06 JIC	1	-
7	5505350	MODEL #211 HAIR PIN/LARGE	2	-
8	5530261	PHPS M6 x 1 x 10	4	-
9	5545347	WASHER, M12 FLAT WASHER	2	-
10	5535354	NUT M12 x L75	2	-
11	5520001	RUBBER GROMMET, 3/4 I.D.	1	-
12	5535001	NUT M8 x 1.25 NL	4	A
13	5530010	HHB M8 x 1.25 x 25	4	-
14	5545200	WASHER M10 x Ø18 SL	4	-
15	5535298	NUT M10 x 1.5	4	-
16	5530760	HEX HEAD BOLT M10x1.25x35	4	-
17	5540075	2.5 WIRE DIA. Ø20.5 x 75 LG	4	A
18	5530750	SIS M4.2 x 1.7 x 6	2	-
19	5545535	C WASHER SHIM FOR LIFTS	20	-
20	5545341	WASHER M10 x Ø20 FLAT	4	-
21	5535013	NUT M10 x 1.5 NL	4	-
22	5505031	ROTOR CLIP 12mm SS	1	-
23	5530115	BHS 6-32 x 1.25	2	-
24	5535190	HN 6-32	2	-
25	5520140	ROMEX CONNECTOR 3/8 #6623	2	-

DO NOT SCALE DRAWING		NAME	DATE	1645 LEMONWOOD DR. SANTA PAULA, CA 93060
DRAWN		TM	02/11/2010	
CHECKED		MR	10/22/2014	
DIMENSIONS ARE IN MM		THIRD ANGLE PROJECTION		TITLE: XPR CLEARFLOOR PARTS BAG
				SIZE DWG. NO. A 5174518
				REV J
SCALE: 1:30				SHEET 1 OF 1

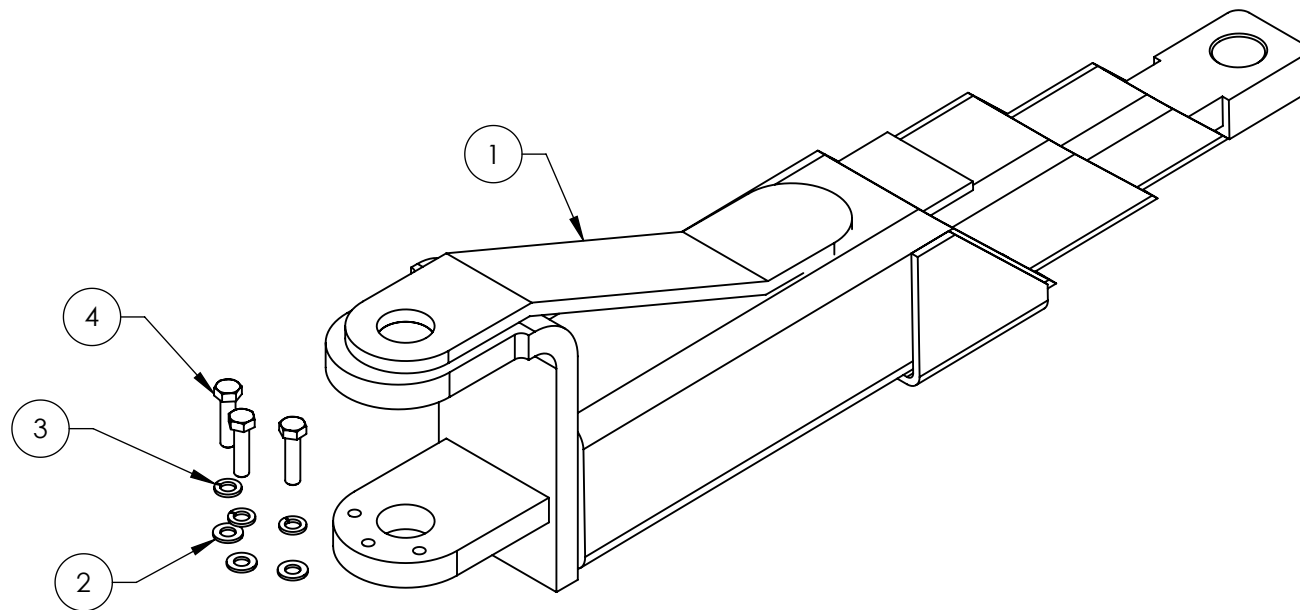
NOTE: UNLESS OTHERWISE SPECIFIED.

1. SEE SHIPPING INSTRUCTIONS FOR FINAL PACKAGING


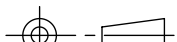
NEXT ASSEMBLY
5250056
5250186
5250199
5250213
5250227
5250228

PROPRIETARY AND CONFIDENTIAL
THE INFORMATION CONTAINED IN THIS DRAWING IS THE SOLE PROPERTY OF BENDPAK INC. ANY REPRODUCTION IN PART OR AS A WHOLE WITHOUT THE WRITTEN PERMISSION OF BENDPAK INC. IS PROHIBITED.

REVISION				
REV	DESCRIPTION	DATE	EDITED BY	ECO#
H	UPDATED BOM REVISION	02/13/2014	TM	00640
J	UPDATED BOM REVISION	04/25/2014	TS	00649
K	UPDATED TITLE TO REFLECT WHERE USED	11/25/2014	TM	00673



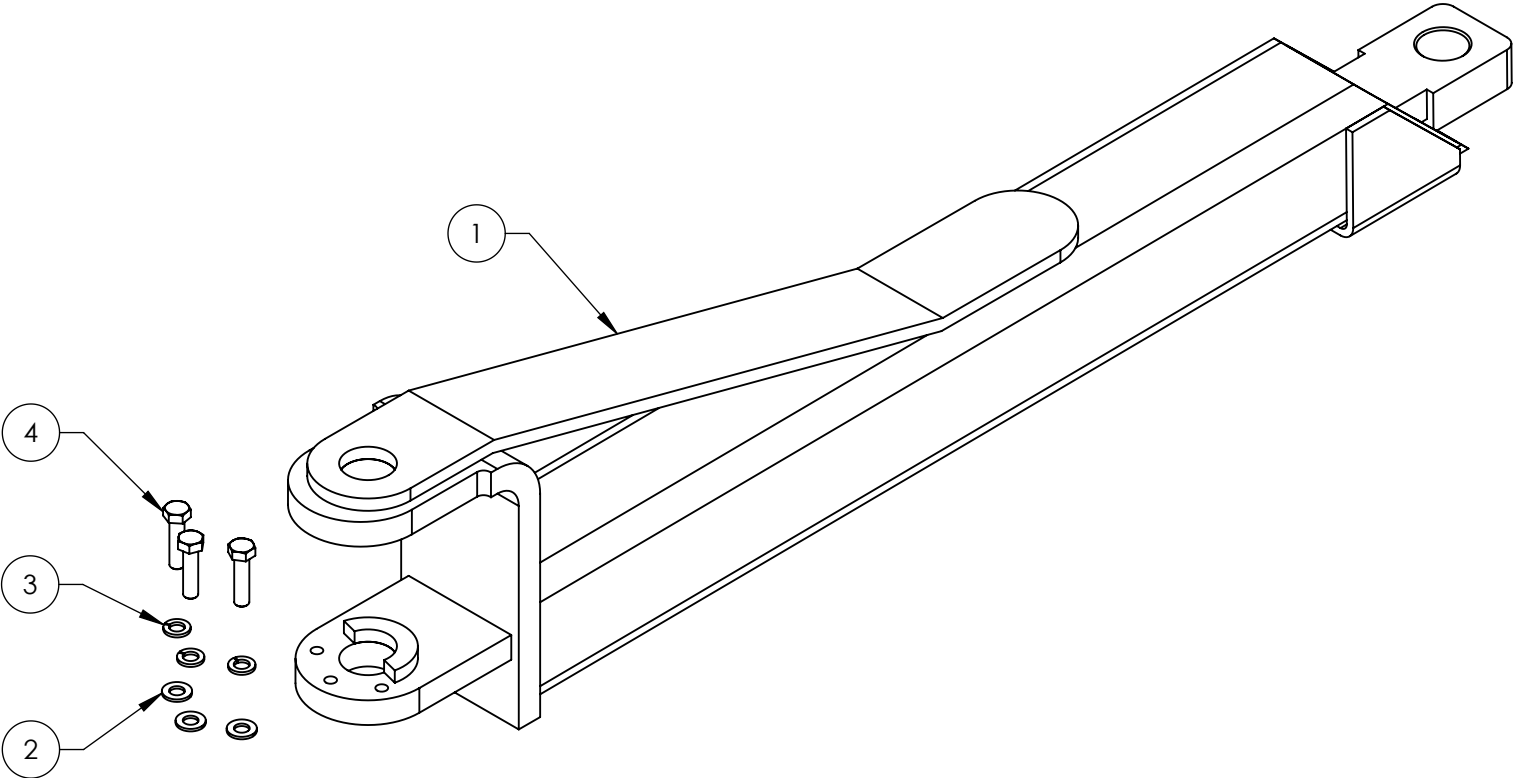
ITEM NO	PART NUMBER	DESCRIPTION	QTY	REV
1	5600425	XPR-10A LOW PROFILE TRIPLE TELESCOPING ARM WELDMENT	1	J
2	5545341	WASHER M10 x Ø20 FLAT	3	-
3	5545200	WASHER M10 x Ø18 SL	3	-
4	5530302	HHB M10 x 1.5 x 40	3	-

DO NOT SCALE DRAWING		NAME	DATE	BendPak. 1645 LEMONWOOD DR. SANTA PAULA, CA 93060	
DIMENSIONS ARE IN MM		DRAWN	TM	01/13/2010	TITLE: XPR-7A/10A LOW PROFILE TRIPLE TELESCOPING ARM ASSEMBLY
		CHECKED	VB	12/23/2014	
		THIRD ANGLE PROJECTION			SIZE DWG. NO. A 5210170
					
		PROPRIETARY AND CONFIDENTIAL THE INFORMATION CONTAINED IN THIS DRAWING IS THE SOLE PROPERTY OF BENDPAK INC. ANY REPRODUCTION IN PART OR AS A WHOLE WITHOUT THE WRITTEN PERMISSION OF BENDPAK INC. IS PROHIBITED.			SCALE: 1:5

NOTE: UNLESS OTHERWISE SPECIFIED.

- SEE SHIPPING INSTRUCTIONS FOR FINAL PACKAGING
- ASSEMBLE ITEMS AS SHOWN

REVISION				
REV	DESCRIPTION	DATE	EDITED BY	ECO#
G	UPDATED BOM REVISION AND TITLE TO REFLECT WHERE USED	02/12/2014	TM	00640
H	UPDATED BOM REVISION	06/02/2014	TM	00649
J	UPDATED TITLE TO REFLECT WHERE USED AND NEXT ASSEMBLIES	11/25/2014	TM	00673





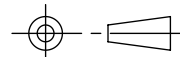
NOTE: UNLESS OTHERWISE SPECIFIED.

1. SEE SHIPPING INSTRUCTIONS FOR FINAL PACKAGING

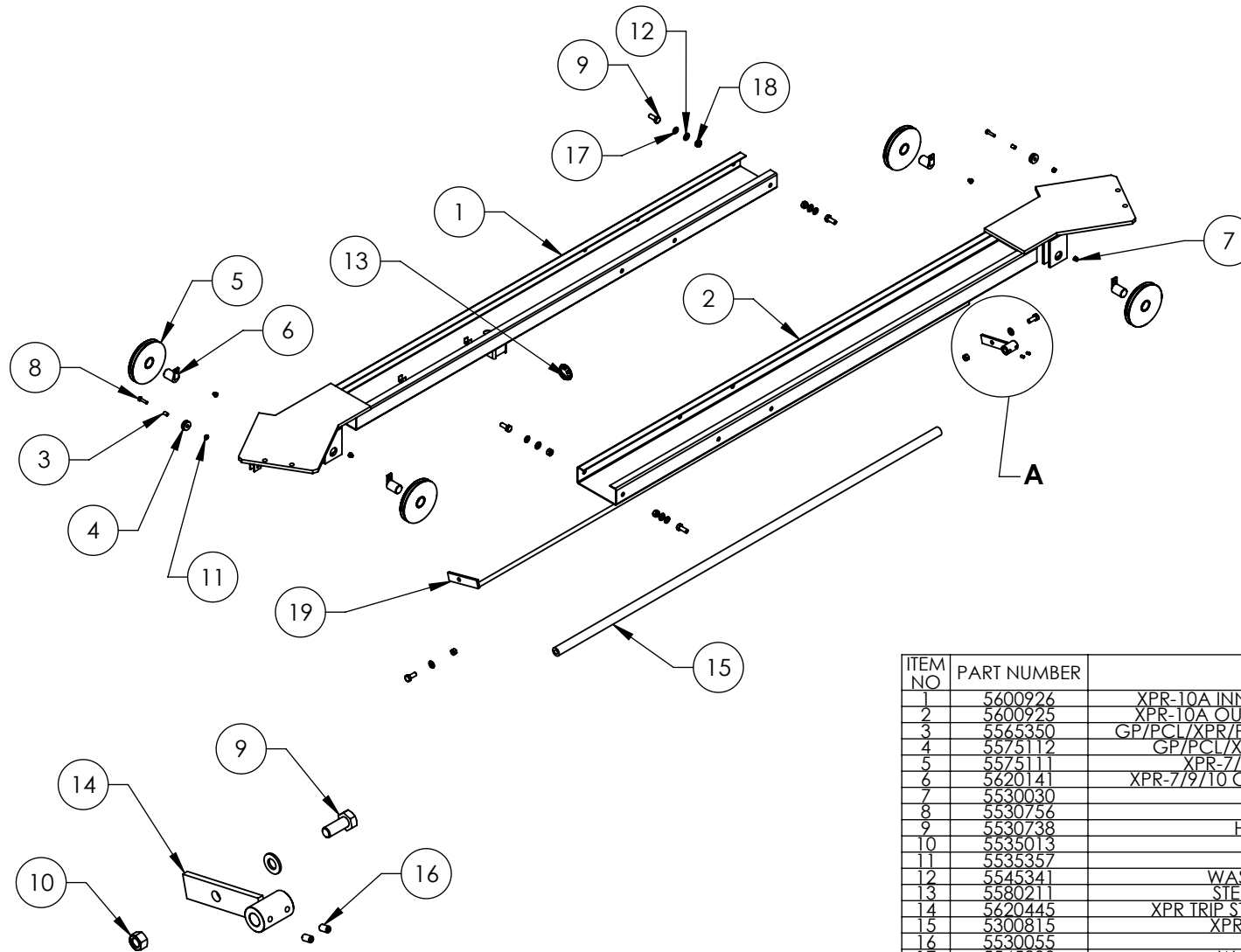
2. ASSEMBLE ITEMS AS SHOWN

NEXT ASSEMBLY
5260086
5260087
5260088
5260089

ITEM NO	PART NUMBER	DESCRIPTION		QTY	REV
1	5600068	XPR-10A LOW PROFILE LONG ARM WELDMENT, L.H.		1	H
2	5545341	WASHER M10 x Ø20 FLAT		3	-
3	5545200	WASHER M10 x Ø18 SL		3	-
4	5530302	HHB M10 x 1.5 x 40		3	-

DO NOT SCALE DRAWING		NAME	DATE	 1645 LEMONWOOD DR. SANTA PAULA, CA 93060	
DIMENSIONS ARE IN MM		DRAWN	TM	01/12/2010	
		CHECKED	VB	12/23/2014	
		THIRD ANGLE PROJECTION		TITLE:	
				XPR-7A/10A LOW PROFILE LONG ARM ASSEMBLY, L.H.	
				SIZE DWG. NO.	REV
<p>PROPRIETARY AND CONFIDENTIAL</p> <p>THE INFORMATION CONTAINED IN THIS DRAWING IS THE SOLE PROPERTY OF BENDPAK INC. ANY REPRODUCTION IN PART OR AS A WHOLE WITHOUT THE WRITTEN PERMISSION OF BENDPAK INC. IS PROHIBITED.</p>		A 5210171		J	
		SCALE: 1:5		SHEET 1 OF 1	

REV	DESCRIPTION	REVISION	DATE	EDITED BY	ECO#
A	PRODUCTION RELEASE, DERIVED FROM 5210203		10/07/2014	TM	00663



DETAIL A
SCALE 1 : 6

NOTE: UNLESS OTHERWISE SPECIFIED.

1. SEE SHIPPING INSTRUCTIONS FOR FINAL PACKAGING
2. ASSEMBLE ITEMS AS SHOWN

NEXT ASSEMBLY
5245044

ITEM NO	PART NUMBER	DESCRIPTION	QTY	REV
1	5600926	XPR-10A INNER TOP TROUGH WELDMENT	1	A
2	5600925	XPR-10A OUTER TOP TROUGH WELDMENT	1	A
3	5565350	GP/PCL/XPR/PL-7000 SAFETY SHEAVE SPACER	2	C
4	5575112	GP/PCL/XPR/PL-7000 SAFETY SHEAVE	2	C
5	5575111	XPR-7/9/10 SHEAVE ASSEMBLY	4	E
6	5620141	XPR-7/9/10 CABLE SHEAVE PIN WELDMENT	4	E
7	5530030	HHB M6 x 1 x 8	4	-
8	5530756	HHB M6 x 1 x 25	2	-
9	5530738	HHB M10 x 1.5 x 25	6	-
10	5535013	NUT M10 x 1.5 NL	2	-
11	5535357	NUT M6 x 1.0 NL	2	-
12	5545341	WASHER M10 x Ø20 FLAT	6	-
13	5580211	STEEL HOLE PLUG 1 1/4"	1	-
14	5620445	XPR TRIP STOP BAR SLIDER WELDMENT	1	C
15	5300815	XPR STOP BAR CUSHION	1	C
16	5530055	SSS M6x1x10	2	-
17	5545200	WASHER M10 x Ø18 SL	4	-
18	5535998	NUT M10 x 1.5	4	-
19	5600501	XPR-10/10A MICROSWITCH STOP BAR WELDMENT	1	B

DO NOT SCALE DRAWING

DIMENSIONS ARE IN MM

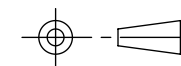


NAME DATE

DRAWN TM 10/07/2014

CHECKED

THIRD ANGLE PROJECTION



PROPRIETARY AND CONFIDENTIAL
THE INFORMATION CONTAINED IN THIS DRAWING IS
THE SOLE PROPERTY OF BENDPAK INC. ANY
REPRODUCTION IN PART OR AS A WHOLE WITHOUT
THE WRITTEN PERMISSION OF BENDPAK INC. IS
PROHIBITED.

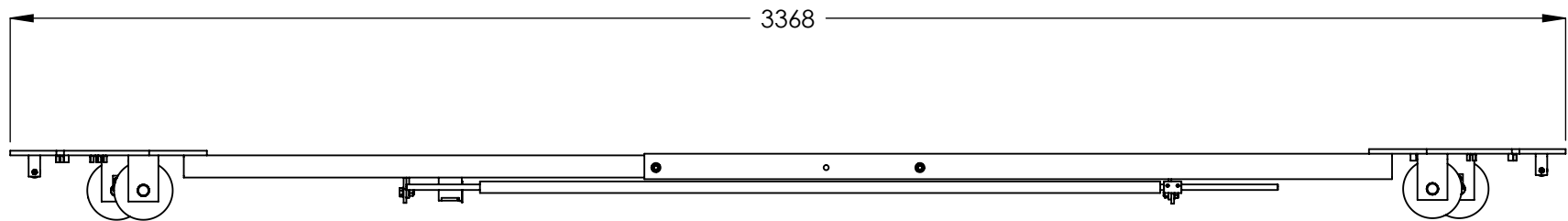
BendPak 1645 LEMONWOOD DR.
SANTA PAULA, CA 93060

TITLE: XPR-7A/10A TOP
TROUGH ASSEMBLY

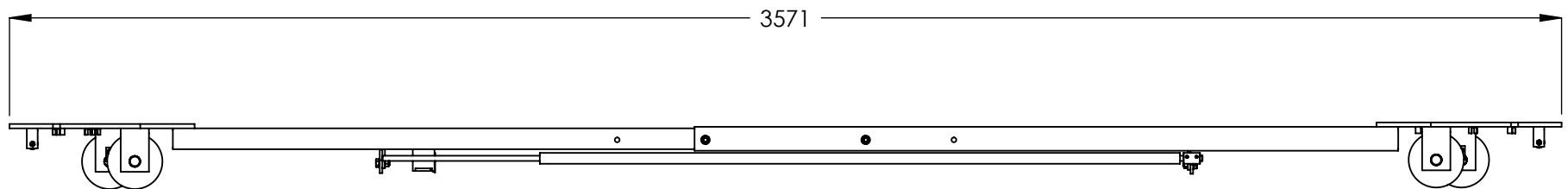
SIZE DWG. NO. REV
A 5210211 A

SCALE: 1:18


SHEET 1 OF 2



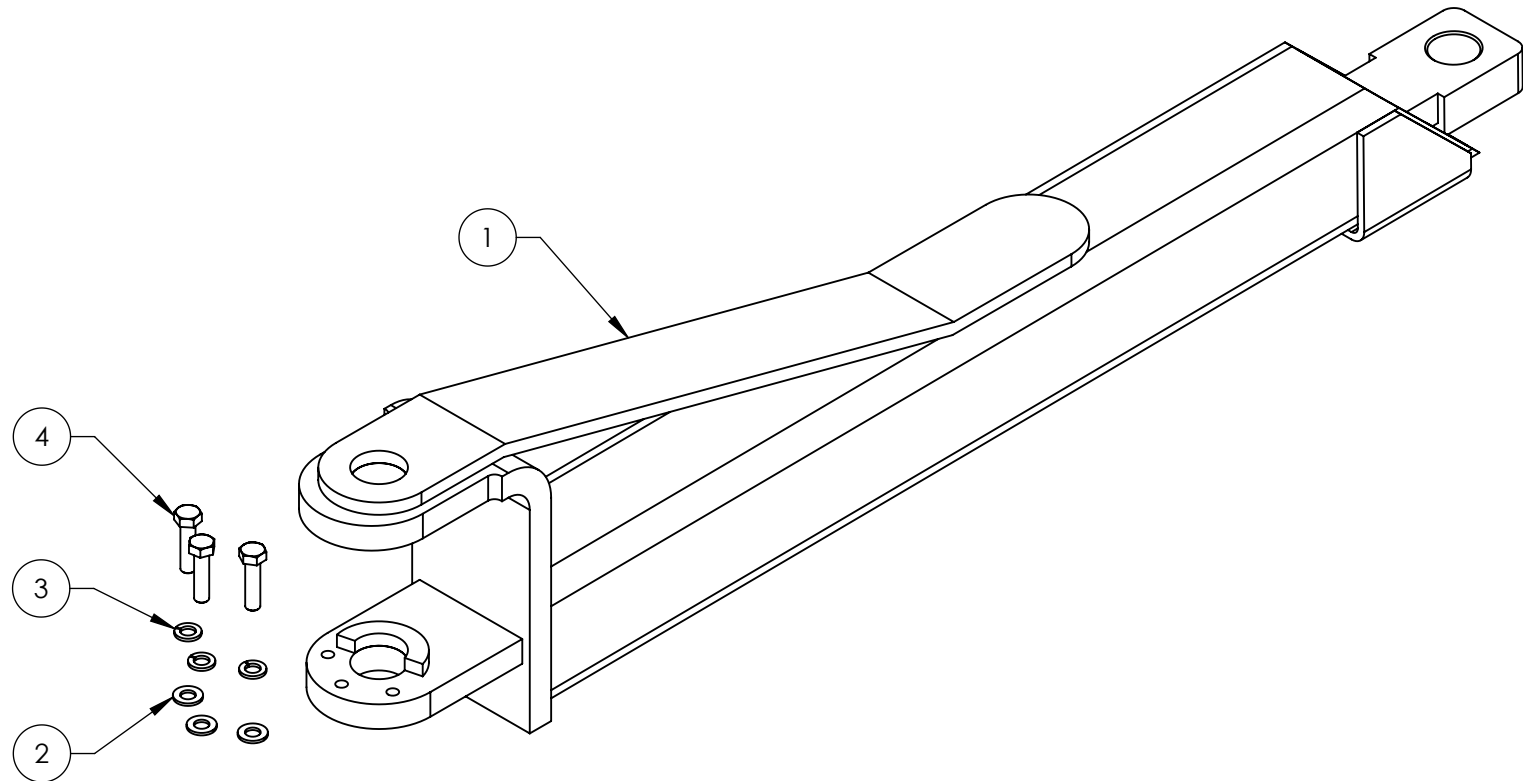
COLLAPSED





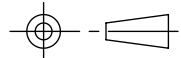
EXTENDED

 BendPak. <small>HYDRAULIC AUTOMATIC SERVICE EQUIPMENT</small>		1645 LEMONWOOD DR. SANTA PAULA, CA 93060
TITLE: XPR-7A/10A TOP TROUGH ASSEMBLY		
SIZE A	DWG. NO. 5210211	REV A
SCALE: 1:15		SHEET 2 OF 2

REVISION		DATE	EDITED BY	ECO#
REV	DESCRIPTION			
A	PRODUCTION RELEASE, DERIVED FROM 5215171	02/12/2014	TM	00640
B	UPDATED BOM REVISION	06/02/2014	TM	00649
C	UPDATED TITLE TO REFLECT WHERE USED AND NEXT ASSEMBLIES	11/25/2014	TM	00673



ITEM NO	PART NUMBER	DESCRIPTION	QTY	REV
1	5600842	XPR-10A LOW PROFILE LONG ARM WELDMENT, R.H.	1	B
2	5545341	WASHER M10 x Ø20 FLAT	3	-
3	5545200	WASHER M10 x Ø18 SL	3	-
4	5530302	HHB M10 x 1.5 x 40	3	-

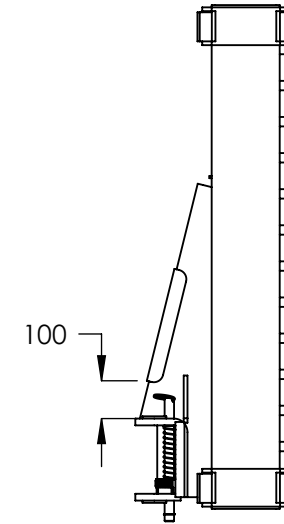
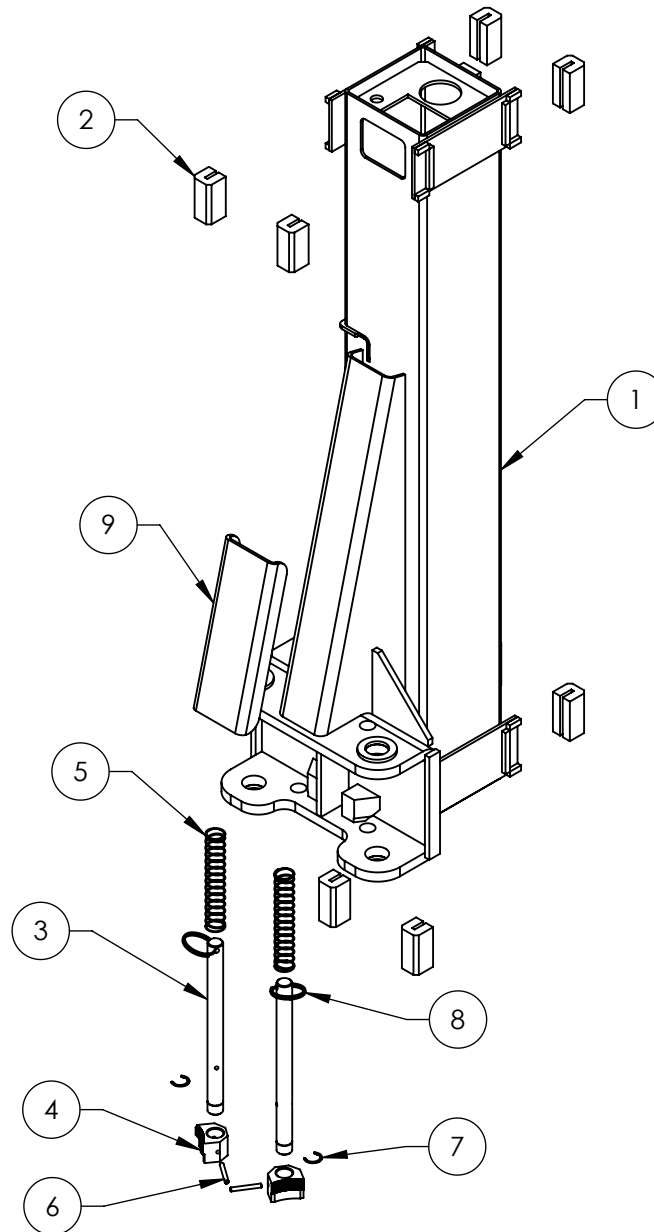
DO NOT SCALE DRAWING		NAME	DATE	 BendPak. 1645 LEMONWOOD DR. <small>MOVING AND LOGISTICS SERVICE SOURCE</small> SANTA PAULA, CA 93060
DRAWN		TM	01/12/2010	
CHECKED		VB	12/23/2014	
DIMENSIONS ARE IN MM 		THIRD ANGLE PROJECTION		TITLE:
				XPR-7A/10A LOW PROFILE LONG ARM ASSEMBLY, R.H.
		<small>PROPRIETARY AND CONFIDENTIAL THE INFORMATION CONTAINED IN THIS DRAWING IS THE SOLE PROPERTY OF BENDPAK INC. ANY REPRODUCTION IN PART OR AS A WHOLE WITHOUT THE WRITTEN PERMISSION OF BENDPAK INC. IS PROHIBITED.</small>		SIZE DWG. NO. REV
		A 5210369 C		SCALE: 1:5 SHEET 1 OF 1

NOTE: UNLESS OTHERWISE SPECIFIED.



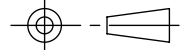
- SEE SHIPPING INSTRUCTIONS FOR FINAL PACKAGING
- ASSEMBLE ITEMS AS SHOWN

NEXT ASSEMBLY
5260086
5260087
5260088
5260089

REVISION				
REV	DESCRIPTION	DATE	EDITED BY	ECO#
H	UPDATED BOM REVISION	06/04/2014	TM	00649
J	UPDATED BOM REVISION	11/19/2014	TM	00673
K	UPDATED BOM REVISION	05/14/2015	TM	00689



ITEM NO	PART NUMBER	DESCRIPTION	QTY	REV
1	5600503	XPR-10/10A LIFT HEAD WELDMENT	1	J
2	5716001	PL-6000/7000, GP/XPR SERIES GUIDE BLOCK	8	E
3	5746098	GP/RTL, XPR-9/10 Ø25mm GEAR SHAFT	2	D
4	5701052	GP/RTL/XPR ARM INTERNAL GEAR STOP	2	E
5	5540133	GP-7, RTL-8000, XPR-9/10 LIFT HEAD SPRING	2	C
6	5505106	SPRING PIN M6 x 50	2	-
7	5540006	SNAP RING TRUARC 5103-100	2	-
8	5580219	KEYRING 56mm x 3mm	2	-
9	5930183	XPR-7/9/10 LIFT HEAD GUSSET COVER	1	D

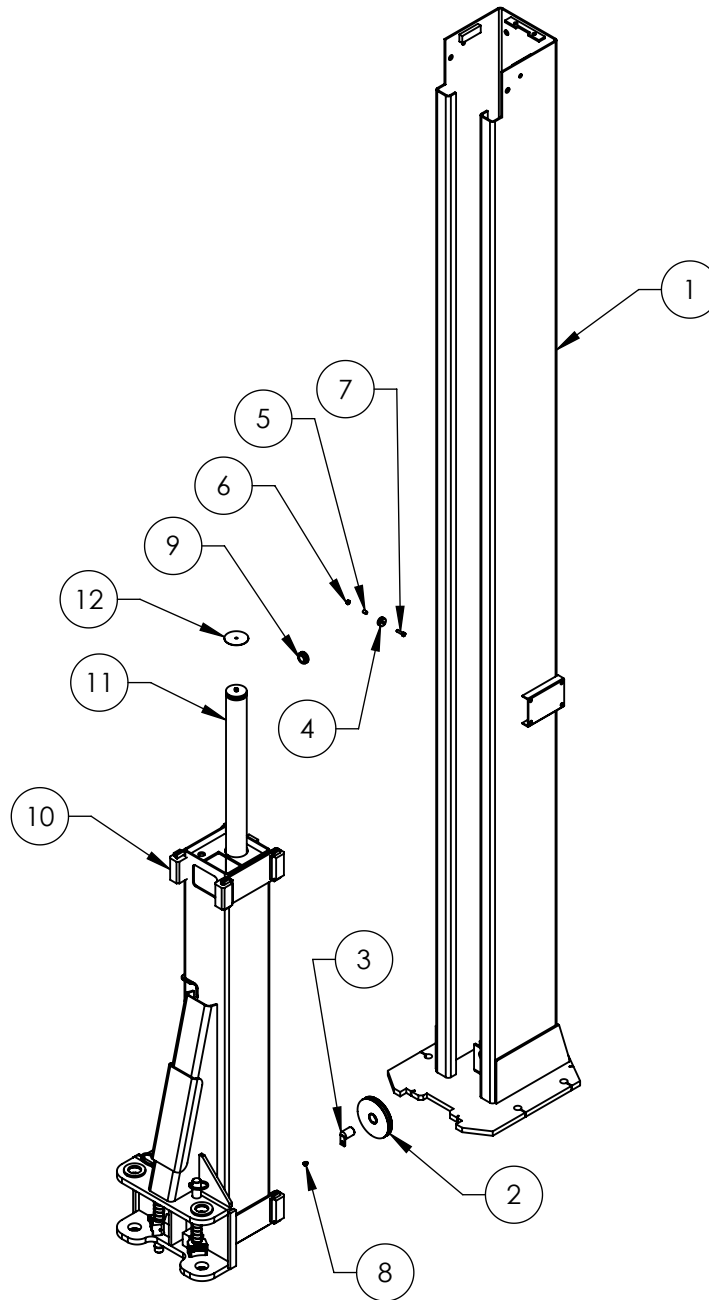
DO NOT SCALE DRAWING		NAME	DATE			
DIMENSIONS ARE IN MM 		DRAWN	TM	08/30/2010	 BendPak. <small>MOVING AUTOMATIC SEW SOURCE</small>	
		CHECKED			1645 LEMONWOOD DR. SANTA PAULA, CA 93060	
		THIRD ANGLE PROJECTION 			TITLE: XPR-10/10A LIFT HEAD ASSEMBLY	
Y		PROPRIETARY AND CONFIDENTIAL THE INFORMATION CONTAINED IN THIS DRAWING IS THE SOLE PROPERTY OF BENDPAK INC. ANY REPRODUCTION IN PART OR AS A WHOLE WITHOUT THE WRITTEN PERMISSION OF BENDPAK INC. IS PROHIBITED.			SIZE DWG. NO. A 5215387	REV K
					SCALE: 1:12	SHEET 1 OF 1

NOTE: UNLESS OTHERWISE SPECIFIED.



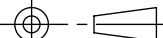
- SEE SHIPPING INSTRUCTIONS FOR FINAL PACKAGING
- ASSEMBLE ITEMS AS SHOWN

NEXT ASSEMBLY
5215388
5215389

REV	DESCRIPTION	REVISION	DATE	EDITED BY	ECO#
L	UPDATED BOM REVISION		06/04/2014	TM	00649
L-001	UPDATED NEXT ASSEMBLY		10/16/2014	TM	00663
M	UPDATED BOM REVISIONS		11/19/2014	TM	00673
N	UPDATED BOM REVISION		05/14/2015	TM	00689



ITEM NO	PART NUMBER	DESCRIPTION	QTY	REV
1	5600386	XPR-7TR/10 POWER SIDE POST WELDMENT	1	G
2	5575111	XPR-7/9/10 SHEAVE ASSEMBLY	1	E
3	5620141	XPR-7/9/10 CABLE SHEAVE PIN WELDMENT	1	E
4	5575112	GP/PCL/XPR/PL-7000 SAFETY SHEAVE	1	C
5	5565350	GP/PCL/XPR/PL-7000 SAFETY SHEAVE SPACER	1	C
6	5535357	NUT M6 x 1.0 NL	1	-
7	5530756	HHB M6 x 1 x 25	1	-
8	5530030	HHB M6 x 1 x 8	1	-
9	5520001	RUBBER GROMMET, 3/4 I.D.	1	A
10	5215387	XPR-10/10A LIFT HEAD ASSEMBLY	1	K
11	5502300	CYLINDER ASSEMBLY Ø2.0 x 69	1	E
12	5701716	XPR LIGHT DUTY CYLINDER STOPPER	1	A

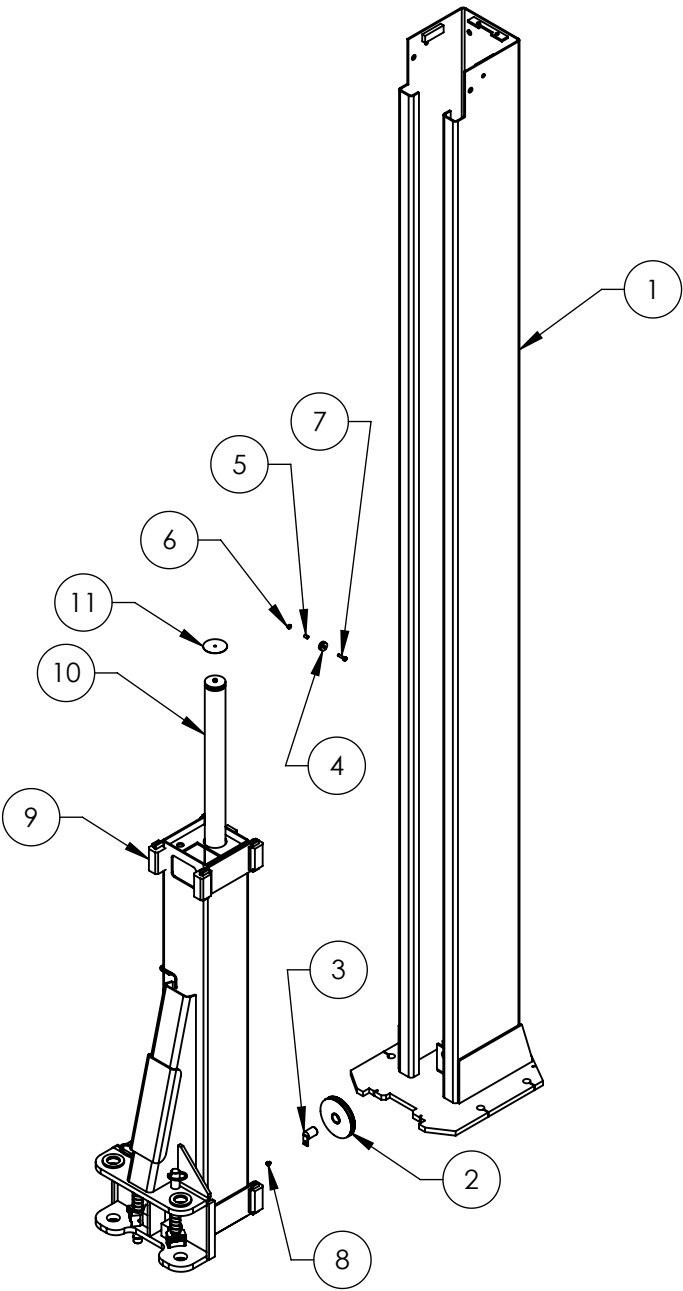
DO NOT SCALE DRAWING		NAME	DATE	<div> BendPak. 1645 LEMONWOOD DR. <small>HOVING AUTOMOTIVE SERVICE SOLUTIONS</small> SANTA PAULA, CA 93060</div>	
DIMENSIONS ARE IN MM		DRAWN	TM		
	CHECKED				
	THIRD ANGLE PROJECTION			TITLE:	
				XPR-7A/10/10A POWER SIDE POST ASSEMBLY	
	<p>PROPRIETARY AND CONFIDENTIAL THE INFORMATION CONTAINED IN THIS DRAWING IS THE SOLE PROPERTY OF BENDPAK INC. ANY REPRODUCTION IN PART OR AS A WHOLE WITHOUT THE WRITTEN PERMISSION OF BENDPAK INC. IS PROHIBITED.</p>			SIZE	DWG. NO.
A				5215388	N
SCALE: 1:22				SHEET 1 OF 1	

NOTE: UNLESS OTHERWISE SPECIFIED.

- SEE SHIPPING INSTRUCTIONS FOR FINAL PACKAGING
- ASSEMBLE ITEMS AS SHOWN

NEXT ASSEMBLY
5245044
5245227

REVISION		DATE	EDITED BY	ECO#
REV	DESCRIPTION			
L	UPDATED BOM REVISION	06/04/2014	TM	00649
L-001	UPDATED NEXT ASSEMBLY	10/16/2014	TM	00663
M	UPDATED BOM REVISIONS	11/19/2014	TM	00673
N	UPDATED BOM REVISION	05/14/2015	TM	00689


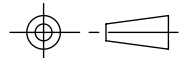


NOTE: UNLESS OTHERWISE SPECIFIED.

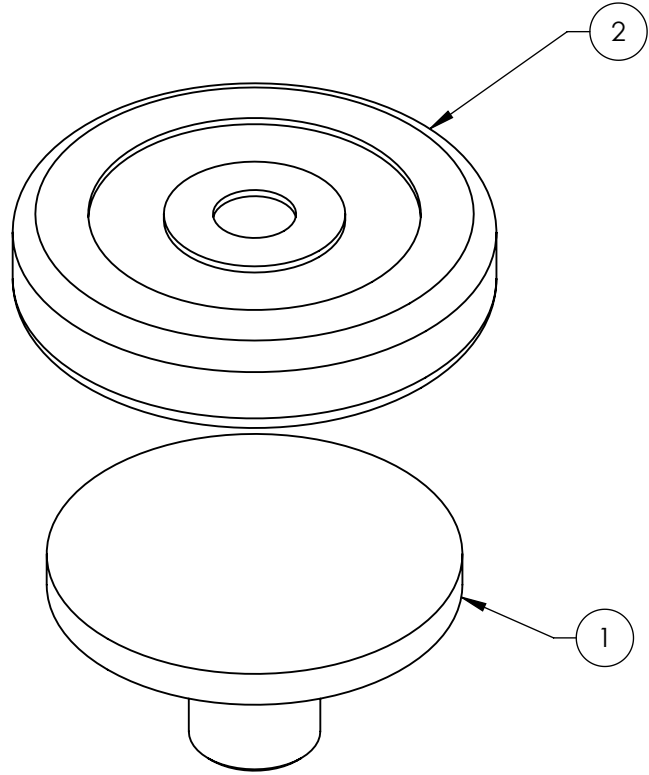
1. SEE SHIPPING INSTRUCTIONS FOR FINAL PACKAGING
2. ASSEMBLE ITEMS AS SHOWN

NEXT ASSEMBLY
5245044
5245227



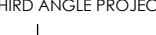
ITEM NO	PART NUMBER	DESCRIPTION	QTY	REV
1	5600387	XPR-7TR/10 OFF SIDE POST WELDMENT	1	E
2	5575111	XPR-7/9/10 SHEAVE ASSEMBLY	1	E
3	5620141	XPR-7/9/10 CABLE SHEAVE PIN WELDMENT	1	E
4	5575112	GP/PCL/XPR/PL-7000 SAFETY SHEAVE	1	C
5	5565350	GP/PCL/XPR/PL-7000 SAFETY SHEAVE SPACER	1	C
6	5535357	NUT M6 x 1.0 NL	1	-
7	5530756	HHB M6 x 1 x 25	1	-
8	5530030	HHB M6 x 1 x 8	1	-
9	5215387	XPR-10/10A LIFT HEAD ASSEMBLY	1	K
10	5502300	CYLINDER ASSEMBLY Ø2.0 x 69	1	E
11	5701716	XPR LIGHT DUTY CYLINDER STOPPER	1	A

DO NOT SCALE DRAWING	NAME	DATE	1645 LEMONWOOD DR. SANTA PAULA, CA 93060
DIMENSIONS ARE IN MM 	DRAWN	TM 08/30/2010	
	CHECKED		
	THIRD ANGLE PROJECTION 		TITLE: XPR-7A/10/10A OFF SIDE POST ASSEMBLY
THE INFORMATION CONTAINED IN THIS DRAWING IS THE SOLE PROPERTY OF BENDPAK INC. ANY REPRODUCTION IN PART OR AS A WHOLE WITHOUT THE WRITTEN PERMISSION OF BENDPAK INC. IS PROHIBITED.	SIZE	DWG. NO.	REV
	A	5215389	N
SCALE: 1:22			SHEET 1 OF 1

REVISION				
REV	DESCRIPTION	DATE	EDITED BY	ECO#
C	UPDATED BOM REVISION	01/14/2011	TM	00431
D	UPDATED BOM REVISION	06/17/2011	MT	00463
D-001	UPDATED NEXT ASSEMBLY	06/21/2011	MT	00461
D-002	UPDATED NEXT ASSEMBLY	03/08/2012	MT	00490
D-003	UPDATED NEXT ASSEMBLY	06/27/2012	TM	00531
E	UPDATE BOM REVISION AND NEXT ASSEMBLY	12/19/2012	TM	00572
E-001	UPDATED NEXT ASSEMBLY	03/14/2013	TM	00586
E-002	UPDATED NEXT ASSEMBLIES	06/21/2013	TM	00605
E-003	UPDATED NEXT ASSEMBLIES	10/16/2014	TM	00663
E-004	UPDATED NEXT ASSEMBLIES	03/24/2015	MR	00691



ITEM NO	PART NUMBER	DESCRIPTION		QTY	REV
1	5600588	ROUND LIFT PAD WELDMENT		1	B
2	5715017	ROUND LIFT PAD ADAPTER RUBBER PAD		1	D

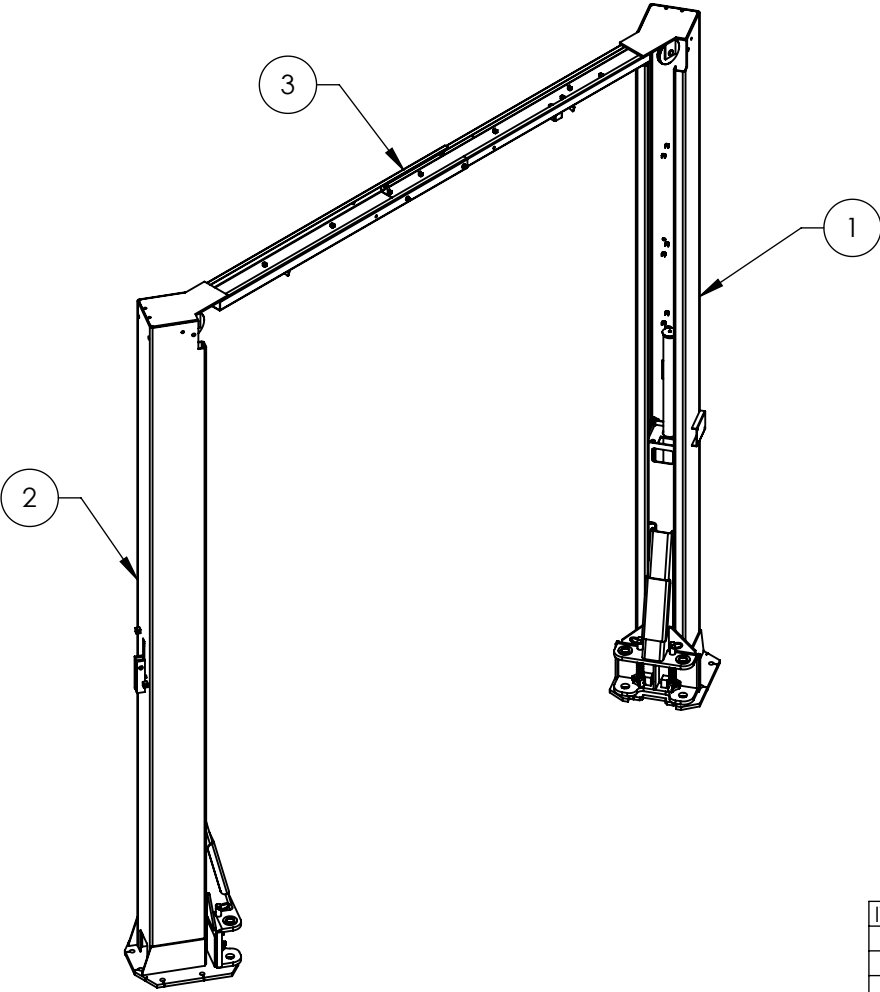
DO NOT SCALE DRAWING		NAME	DATE	 BendPak. <small>MOVING • PACKAGING • SERVICE • SOLUTIONS</small> 1645 LEMONWOOD DR. SANTA PAULA, CA 93060	
<div>DIMENSIONS ARE IN MM</div> 		DRAWN	AC		12/30/2010
		CHECKED	TM		03/25/2015
		TITLE: ROUND LIFT PAD ADAPTER ASSEMBLY			
		SIZE	DWG. NO. A 5215507		REV E
SCALE: 1:2				SHEET 1 OF 1	

NEXT ASSEMBLY	
5210163	5250214
5250056	5250222
5250057	5250223
5250080	5250224
5250113	5250225
5250128	5250227
5250186	5250228
5250190	5250242
5250199	5250243
5250213	5150561



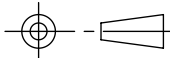
NOTE: UNLESS OTHERWISE SPECIFIED.

- SEE SHIPPING INSTRUCTIONS FOR FINAL PACKAGING
- ASSEMBLE ITEMS AS SHOWN

		REVISION			
REV	DESCRIPTION	DATE	EDITED BY	ECO#	
A	PRODUCTION RELEASE, DERIVED FROM 5245228	10/07/2014	TM	00663	
B	UPDATED BOM REVISIONS	11/21/2014	TM	00673	
C	UPDATED BOM REVISIONS	05/14/2015	TM	00689	



ITEM NO	PART NUMBER	DESCRIPTION	QTY	REV
1	5215388	XPR-7A/10/10A POWER SIDE POST ASSEMBLY	1	N
2	5215389	XPR-7A/10/10A OFF SIDE POST ASSEMBLY	1	N
3	5210211	XPR-7A/10A TOP TROUGH ASSEMBLY	1	A

DO NOT SCALE DRAWING		NAME	DATE	<div>1645 LEMONWOOD DR. SANTA PAULA, CA 93060</div>	
		DRAWN	TM 10/07/2014		
		CHECKED			
DIMENSIONS ARE IN MM 		THIRD ANGLE PROJECTION		TITLE: XPR-7A/10A LIFT SUPERSTRUCTURE	
				SIZE DWG. NO. REV	
		<p>PROPRIETARY AND CONFIDENTIAL</p> <p>THE INFORMATION CONTAINED IN THIS DRAWING IS THE SOLE PROPERTY OF BENDPAK INC. ANY REPRODUCTION IN PART OR AS A WHOLE WITHOUT THE WRITTEN PERMISSION OF BENDPAK INC. IS PROHIBITED.</p>		A 5245044 C	
SCALE: 1:10				SHEET 1 OF 1	

NOTE: UNLESS OTHERWISE SPECIFIED.
1. SEE SHIPPING INSTRUCTIONS FOR FINAL PACKAGING

NEXT ASSEMBLY
5260081
5260082
5260083
5260084
5260086
5260087
5260088
5260089


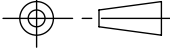

REVISION				
REV	DESCRIPTION	DATE	EDITED BY	ECO#
A	PRODUCTION RELEASE, DERIVED FROM 5250003 ADDED 5746389, REPLACED 5540129 WITH 5540281, REMOVED 5905109, 5905131, 5905403, 5905465, 5905940, 5930630, UPDATED BOM REVISION	11/28/2014	TM	00673
B		05/15/2015	TM	00689

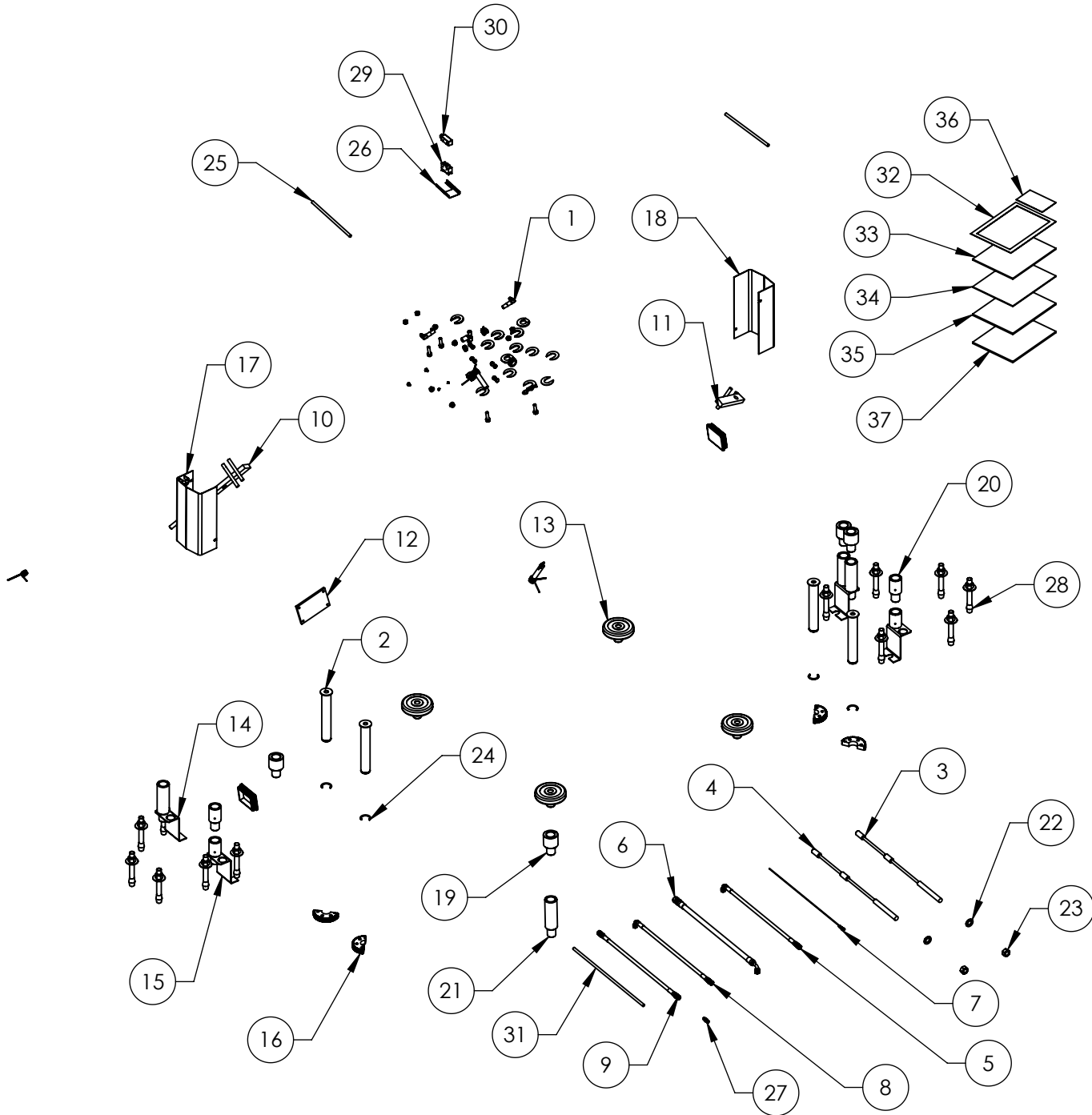
ITEM NO	PART NUMBER	DESCRIPTION	QTY	REV
1	5174518	XPR CLEARFLOOR PARTS BAG	1	J
2	5505116	XPR-7/7A/9/10 LIFT HEAD PIN WELDMENT	4	C
3	5595073	XPR-7A/10A CABLE ASSEMBLY Ø10 x 9999mm DBST	1	A
4	5595072	XPR-7A/10A CABLE ASSEMBLY Ø10 x 10115mm DBST	1	A
5	5570832	XPR CLEARFLOOR HYDRAULIC HOSE ASSY Ø6.35 x 2299mm SB	1	E
6	5570017	XPR HYDRAULIC HOSE ASSY Ø10 x 1219mm SB	1	C
7	5595047	XPR-7A/10/10A/7IR Ø2.4 x 7747 SAFETY CABLE	1	D
8	5570058	XPR-7A/10A HYDRAULIC HOSE ASSY Ø6.35 x 8090 SB	1	A
9	5570065	XPR-7A/10A HYDRAULIC HOSE EXTENSION ASSY Ø6.35 x 203mm DS	1	B
10	5210007	XPR POWER SIDE SAFETY ASSEMBLY	1	F
11	5210010	XPR OFF SIDE SAFETY WELDMENT	1	F
12	5715003	POWER UNIT VIBRATION DAMPENER	1	B
13	5215507	ROUND LIFT PAD ADAPTER ASSEMBLY	4	E
14	5730663	GP-7/RTL-8000/XPR-7/9/10 POST ASSEMBLY LIFT HEAD FOOT GUARD R.H.	2	D
15	5730664	GP-7/RTL-8000/XPR-7/9/10 POST ASSEMBLY LIFT HEAD FOOT GUARD L.H.	2	D
16	5736604	TWO POST LIGHT DUTY BOLT ON ARM RESTRAINT GEAR	4	E
17	5600163	XPR CLEARFLOOR POWER SIDE SAFETY COVER	1	D
18	5210009	XPR-7A/7IR/7TRFD/ 9D/10/12/12FD/15/18C OFF SIDE SAFETY COVER	1	D
19	5746389	GP/XPR SHORT LIFT PAD EXTENSION (95mm LG.)	4	B
20	5746390	GP/XPR/RJ/MD-6XP MEDIUM LIFT PAD EXTENSION (113mm LG.)	4	D
21	5746395	GP/XPR/RJ LONG LIFT PAD EXTENSION (182mm LG.)	4	C
22	5545342	WASHER M18 FLAT	2	-
23	5535358	NUT M18 x 2.5 NL	2	-
24	5540281	C RING Ø38mm OD 5103-150	4	-
25	5746167	DOUBLE THREADED ROD M10 x 1.5 x 275	2	B
26	5716634	XPR MICROSWITCH COVER, PLASTIC	1	A
27	5550095	FIG NPL -04 JIC x -04 JIC	1	-
28	5530307	AB 3/4" x 5"	12	-
29	5525150	SPDT MICRO SWITCH:25A@125VAC	1	-
30	5525112	MICRO SWITCH COVER-5PA2	1	-
31	5520116	14-4 SIO UL 62 CABLE 300vac	3635mm*	-
32	5905151	SAFETY TIPS CARD ALL-ST 90	1	-
33	5900147	SAFETY MANUAL ALI / SM 93-1	1	-
34	5900152	ALIGN OIM OPERATION INSPECTION & MAINTENANCE	1	-
35	5900280	ALI/LP FRAME ENGAGING LIFTS GUIDE	1	-
36	5900151	BENDPAK #90 WARRANTY CARD	1	-
37	5900047	XPR-7A/10/10A INSTALLATION MANUAL	1	-

NOTE: UNLESS OTHERWISE SPECIFIED.

- SEE SHIPPING INSTRUCTIONS FOR FINAL PACKAGING
- INSERT PARTS BAG INTO PARTS BOX FOR SHIPMENT
- THREAD 5535358 WITH 5545342 ONTO CABLES FOR SHIPMENT
- HOSES AND CABLES IN REPRESENTATIONAL FORM
- FOR 5220116 SPECIFICATIONS REFER TO PART SPECIFICATION FORM (*)5520116 QTY FOR REFERENCE ONLY

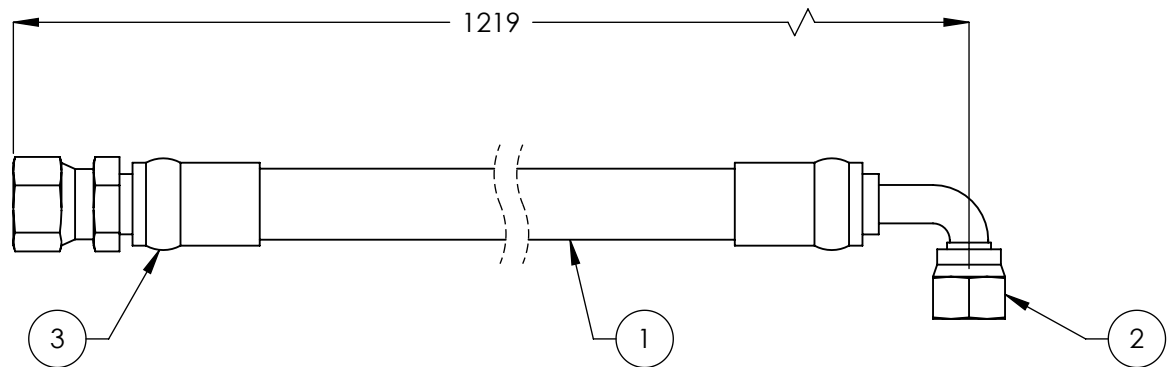
NEXT ASSEMBLY
5260083
5260088

DO NOT SCALE DRAWING		NAME	DATE
DIMENSIONS ARE IN MM 		DRAWN	TM 11/28/2014
		CHECKED	
		THIRD ANGLE PROJECTION 	
PROPRIETARY AND CONFIDENTIAL THE INFORMATION CONTAINED IN THIS DRAWING IS THE SOLE PROPERTY OF BENDPAK INC. ANY REPRODUCTION IN PART OR AS A WHOLE WITHOUT THE WRITTEN PERMISSION OF BENDPAK INC. IS PROHIBITED.		 1645 LEMONWOOD DR. SANTA PAULA, CA 93060	
		TITLE: XPR-10A PARTS BOX	
		SIZE DWG. NO.	REV
A 5250003		B	
SCALE: 1:35		SHEET 1 OF 2	


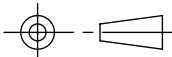


BendPak 1645 LEMONWOOD DR. <small>PROVIDING AUTOMATIC SERVICE SOLUTIONS</small> SANTA PAULA, CA 93060		
TITLE: XPR-10A PARTS BOX		
SIZE A	DWG. NO. 5250003	REV B
SCALE: 1:25		SHEET 2 OF 2

REVISION				
REV	DESCRIPTION	DATE	EDITED BY	ECO#
A	PRODUCTION RELEASE, DERIVED FROM 800399	08/27/2009	TM	00293
A-001	UPDATED NEXT ASSEMBLY	09/08/2010	TM	00396
A-002	UPDATED NEXT ASSEMBLY	04/18/2011	MT	00454
B	UPDATED TITLE TO REFLECT WHERE USED, UPDATED NEXT ASSEMBLIES	01/12/2012	TM	00490
C	UPDATED TITLE TO REFLECT WHERE USED, UPDATED NEXT ASSEMBLIES	06/21/2013	TM	00605
C-001	UPDATED NEXT ASSEMBLIES	10/16/2014	TM	00663



ITEM NO	PART NUMBER	DESCRIPTION	QTY	REV
1	5570116	Ø10 ID HYDRAULIC HOSE	1144mm*	-
2	5550337	FTG ELB -06 CRIMP x -06 JIC	1	-
3	5550336	FTG NPL -06 CRIMP x -06 JIC	1	-

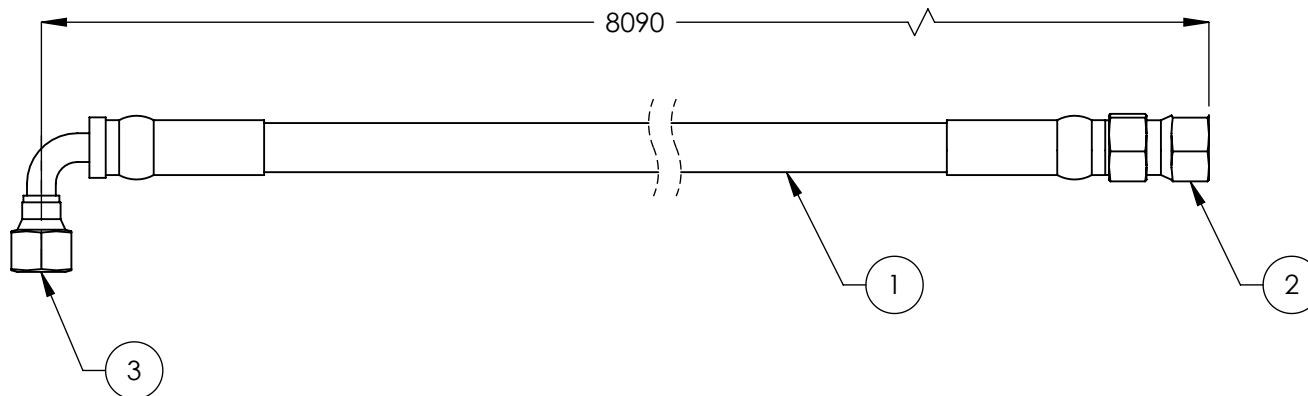
DO NOT SCALE DRAWING		NAME	DATE	 1645 LEMONWOOD DR. SANTA PAULA, CA 93060			
DIMENSIONS ARE IN MM TOLERANCES: 0. = ±1.5 0.0 = ±1.0 0.00 = ±0.25 0.000 = ±0.13 ANGULAR: MACH ±2° SURFACE FINISH 1.6 ISO Ra µm FOR MACHINED SURFACES UNLESS OTHERWISE SPECIFIED MATERIAL: -- SIZE: --		DRAWN	TM	08/27/2009			
		CHECKED	MR	10/23/2014			
		THIRD ANGLE PROJECTION			TITLE: XPR HYDRAULIC HOSE ASSY Ø10 x 1219mm SB		
							
		PROPRIETARY AND CONFIDENTIAL THE INFORMATION CONTAINED IN THIS DRAWING IS THE SOLE PROPERTY OF BENDPAK INC. ANY REPRODUCTION IN PART OR AS A WHOLE WITHOUT THE WRITTEN PERMISSION OF BENDPAK INC. IS PROHIBITED.			SIZE	DWG. NO.	REV
					A	5570017	C
		SCALE: 1:2				SHEET 1 OF 1	

NOTE: UNLESS OTHERWISE SPECIFIED.

- FOR ITEM 1 SPECIFICATIONS REFER TO PART SPECIFICATION FORM
- (*)ITEM 1 QTY FOR REFERENCE ONLY

NEXT ASSEMBLY	
5250222	5250227
5250056	5250228
5250057	5250229
5250199	5250242
5250213	5250243
5250214	5250245
5250223	5250248


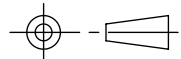
REV		DESCRIPTION	REVISION	DATE	EDITED BY	ECO#
A		PRODUCTION RELEASE, DERIVED FROM 5570038		11/28/2014	TM	00673



NOTE: UNLESS OTHERWISE SPECIFIED.

1. FOR ITEM 1 SPECIFICATIONS REFER TO PART SPECIFICATION FORM
2. (*)ITEM 1 QTY FOR REFERENCE ONLY

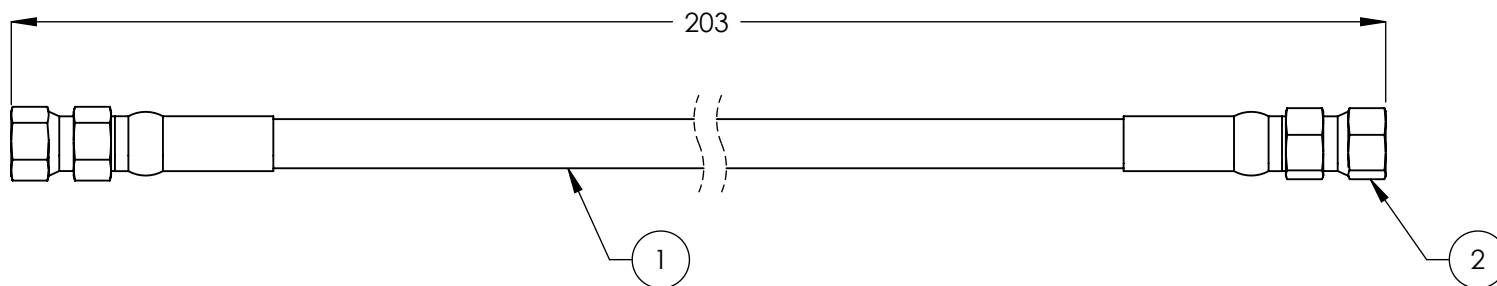
ITEM NO.	PART NUMBER	DESCRIPTION	QTY.	REV
1	5570129	Ø6.4 ID HYDRAULIC HOSE	8040mm*	--
2	5550325	FTG NPL Ø1/4 CRIMP x -04 JIC	1	--
3	5550345	FTG ELB Ø1/4 CRIMP x -04 JIC	1	--

DO NOT SCALE DRAWING		NAME	DATE	 BendPak. 1645 LEMONWOOD DR. SANTA PAULA, CA 93060
DIMENSIONS ARE IN MM		DRAWN	TM	
TOLERANCES:		CHECKED	VB	
0. = ±1.5 0.0 = ±1.0 0.00 = ±0.25 0.000 = ±0.13 ANGULAR: MACH ±2° SURFACE FINISH 1.6 ISO Ra µm FOR MACHINED SURFACES UNLESS OTHERWISE SPECIFIED		THIRD ANGLE PROJECTION		TITLE:
				XPR-7A/10A HYDRAULIC HOSE ASSY Ø6.35 x 8090 SB
		<small>PROPRIETARY AND CONFIDENTIAL THE INFORMATION CONTAINED IN THIS DRAWING IS THE SOLE PROPERTY OF BENDPAK INC. ANY REPRODUCTION IN PART OR AS A WHOLE WITHOUT THE WRITTEN PERMISSION OF BENDPAK INC. IS PROHIBITED.</small>		SIZE DWG. NO.
		A 5570058		REV
		SCALE: 1:2		A

NEXT ASSEMBLY
5250003
5250006

SHEET 1 OF 1

REVISION				
REV	DESCRIPTION	DATE	EDITED BY	ECO#
A	PRODUCTION RELEASE, DERIVED FROM 5570176	10/07/2014	TM	00663
B	REPLACED 5570110 WITH 5570129 TO REFLECT INVENTORY	11/21/2014	TM	00673



ITEM NO.	PART NUMBER	DESCRIPTION	QTY.	REV
1	5570129	Ø6.4 ID HYDRAULIC HOSE	137mm*	--
2	5550325	FTG NPL Ø1/4 CRIMP x -04 JIC	2	--

DO NOT SCALE DRAWING		NAME	DATE
DIMENSIONS ARE IN MM TOLERANCES: 0. = ±1.5 0.0 = ±1.0 0.00 = ±0.25 0.000 = ±0.13 ANGULAR: MACH±2° SURFACE FINISH 1.6 ISO Ra µm FOR MACHINED SURFACES UNLESS OTHERWISE SPECIFIED		DRAWN	TM 10/07/2014
		CHECKED	VB 12/22/2014
		THIRD ANGLE PROJECTION	
		PROPRIETARY AND CONFIDENTIAL THE INFORMATION CONTAINED IN THIS DRAWING IS THE SOLE PROPERTY OF BENDPAK INC. ANY REPRODUCTION IN PART OR AS A WHOLE WITHOUT THE WRITTEN PERMISSION OF BENDPAK INC. IS PROHIBITED.	

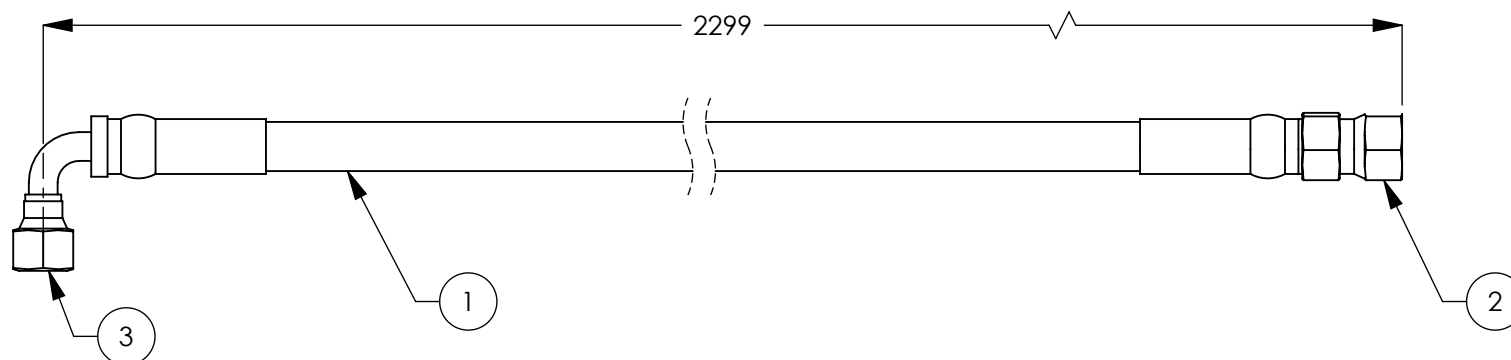
BendPak 1645 LEMONWOOD DR. <small>HYDRAULIC AUTOMOTIVE SERVICE EQUIPMENT</small> SANTA PAULA, CA 93060		TITLE: XPR-7A/10A HYDRAULIC HOSE EXTENSION ASSY Ø6.35 x 203mm DS	
SIZE	DWG. NO.	REV	
A	5570065	B	
SCALE: 1:2		SHEET 1 OF 1	

NOTE: UNLESS OTHERWISE SPECIFIED.

1. FOR ITEM 1 SPECIFICATIONS REFER TO PART SPECIFICATION FORM
2. (*)ITEM 1 QTY FOR REFERENCE ONLY

NEXT ASSEMBLY
5240806
5250003
5250004
5250006
5250027

REVISION		DATE	EDITED BY	ECO#
REV	DESCRIPTION			
C	UPDATED TITLE TO REFLECT WHERE USED, UPDATED NEXT ASSEMBLIES	02/07/2012	TM	00490
D	UPDATED TITLE TO REFLECT WHERE USED, UPDATED NEXT ASSEMBLIES	06/27/2017	TM	00605
D-001	UPDATED NEXT ASSEMBLIES	10/16/2014	TM	00663
E	REPLACED 5570110 WITH 5570129 TO REFLECT INVENTORY	11/20/2014	TM	00673



NOTE: UNLESS OTHERWISE SPECIFIED.

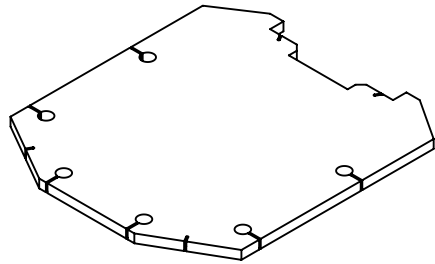
- FOR ITEM 1 SPECIFICATIONS REFER TO PART SPECIFICATION FORM
- (*)ITEM 1 QTY FOR REFERENCE ONLY

NEXT ASSEMBLY	
5250004	5250228
5250004	5250243
5250027	5250245
5250186	5250248
5250199	
5250213	
5250214	
5250222	
5250223	

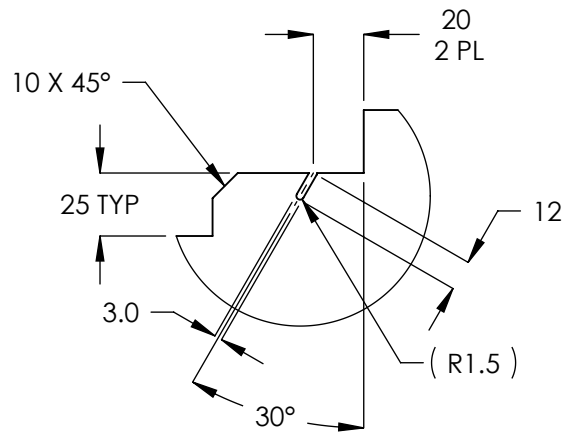
ITEM NO	PART NUMBER	DESCRIPTION	QTY	REV
1	5570129	Ø6.4 ID HYDRAULIC HOSE	2249mm*	A
2	5550325	FTG NPL Ø1/4 CRIMP x -04 JIC	1	A
3	5550345	FTG FLB Ø1/4 CRIMP x -04 JIC	1	A
DO NOT SCALE DRAWING		NAME	DATE	
DIMENSIONS ARE IN MM TOLERANCES: 0. = ±1.5 0.0 = ±1.0 0.00 = ±0.25 0.000 = ±0.13 ANGULAR: MACH±2° SURFACE FINISH 1.6 ISO Ra µm FOR MACHINED SURFACES UNLESS OTHERWISE SPECIFIED		DRAWN	GJ	10/13/2008
		CHECKED	VB	12/22/2014
THIRD ANGLE PROJECTION 		BendPak. 1645 LEMONWOOD DR. SANTA PAULA, CA 93060		
		TITLE: XPR CLEARFLOOR HYDRAULIC HOSE ASSY Ø6.35 x 2299mm SB		
A		SIZE	DWG. NO.	REV
			5570832	E
SCALE: 1:2				SHEET 1 OF 1

PROPRIETARY AND CONFIDENTIAL
THE INFORMATION CONTAINED IN THIS DRAWING IS
THE SOLE PROPERTY OF BENDPAK INC. ANY
REPRODUCTION IN PART OR AS A WHOLE WITHOUT
THE WRITTEN PERMISSION OF BENDPAK INC. IS
PROHIBITED.

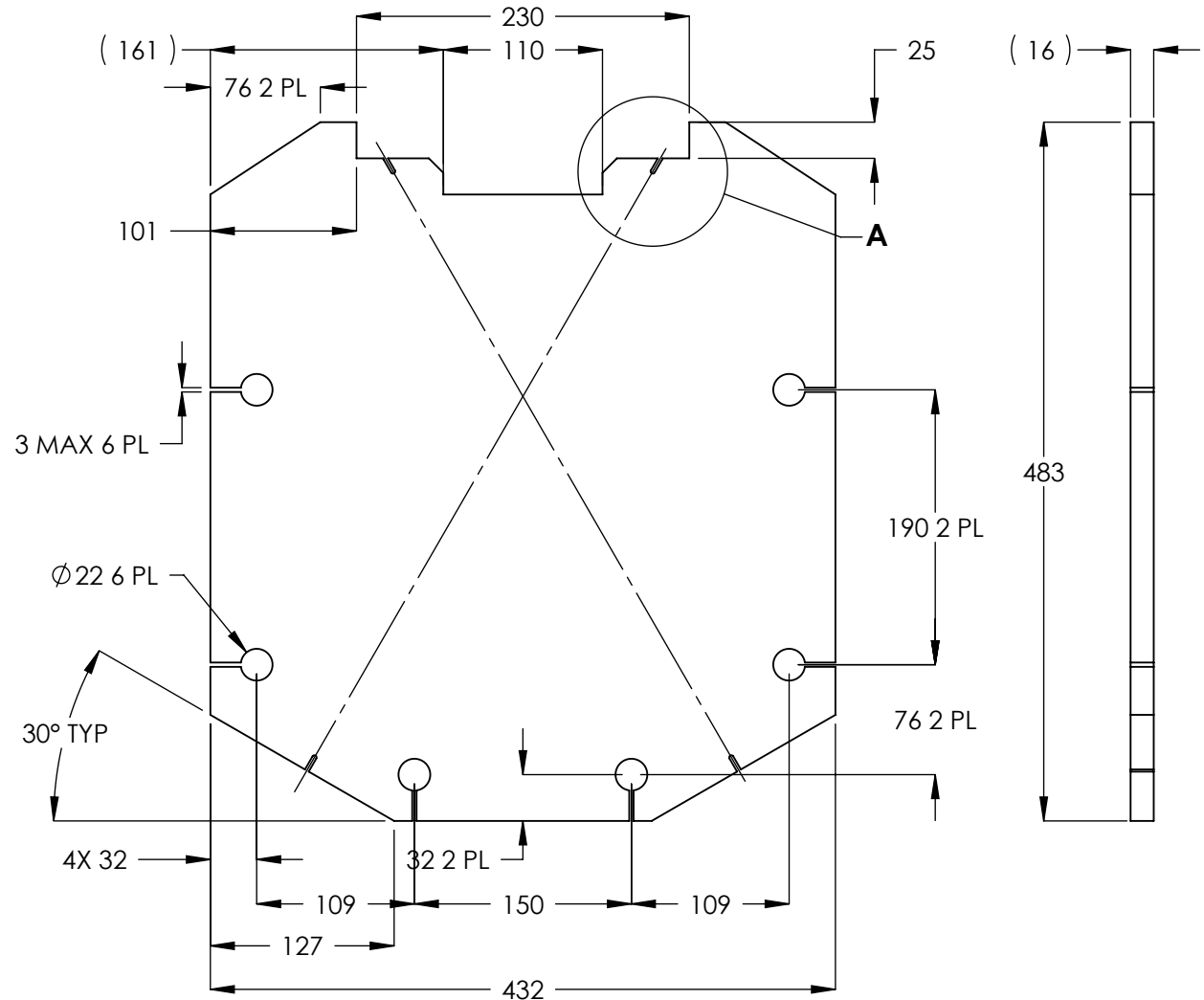
REV	DESCRIPTION	REVISION	DATE	EDITED BY	ECO#
A	PRODUCTION RELEASE. DERIVED FROM 800138		08/19/2009	TM	00293
B	UPDATED TITLE TO REFLECT WHERE USED		06/03/2010	TM	00367



ISOMETRIC VIEW
FOR REFERENCE ONLY
DO NOT SCALE




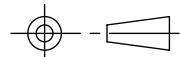
DETAIL A
SCALE 1 : 3



NOTE: UNLESS OTHERWISE SPECIFIED.

- BREAK AND DEBURR ALL SHARP EDGES 0.3mm
- FLAME CUT EDGE FINISH

NEXT ASSEMBLY
5620352

DO NOT SCALE DRAWING		NAME	DATE	 BendPak. 1645 LEMONWOOD DR. SANTA PAULA, CA 93060		
DIMENSIONS ARE IN MM TOLERANCES: MACHINE TO 0. = ±1.5 0.0 = ±0.5 0.00 = ±0.13 ANGULAR: MACHINE TO 0. = ±1/2° SURFACE FINISH 1.6 ISO Ra µm FOR MACHINED SURFACES UNLESS OTHERWISE SPECIFIED MATERIAL: HR ASTM A36 OR Q235 GB/T 700		DRAWN	TM	08/19/2009	TITLE: XPR-7TR/10 BASE PLATE	
		CHECKED	AC	07/31/2010		
SIZE: 16mm THICK		THIRD ANGLE PROJECTION				SIZE DWG. NO. A 5736296
						
THE INFORMATION CONTAINED IN THIS DRAWING IS THE SOLE PROPERTY OF BENDPAK INC. ANY REPRODUCTION IN PART OR AS A WHOLE WITHOUT THE WRITTEN PERMISSION OF BENDPAK INC. IS PROHIBITED.		PROPRIETARY AND CONFIDENTIAL			REV B	
		SCALE: 1:5			SHEET 1 OF 1	

PART SPECIFICATION FORM

BENDPAK Number:	5900047
MRP Description:	XPR-7A/10/10A INSTALLATION MANUAL
Date:	02/11/2015
ECO :	00686

1. Engineering Specification

Application:

INSTALLATION MANUAL

Detailed Description:

⚠ WARNING

EUROPEAN USERS

400V 50Hz SUPPLY DETAILS ARE INCLUDED WITH ELECTRICAL CONTROL BOX. DISREGARD SUPPLY WIRING DETAILS IN THIS MANUAL.

IMPORTANT SAFETY INSTRUCTIONS
SAVE THESE INSTRUCTIONS

PLEASE READ THE ENTIRE CONTENTS OF THIS MANUAL PRIOR TO INSTALLATION AND OPERATION. BY PROCEEDING WITH LIFT INSTALLATION AND OPERATION YOU AGREE THAT YOU FULLY UNDERSTAND THE FULL CONTENTS OF THIS MANUAL. FORWARD THIS MANUAL TO ALL OPERATORS. FAILURE TO OPERATE THIS EQUIPMENT AS DIRECTED MAY CAUSE INJURY OR DEATH.

INSTALLATION AND OPERATION MANUAL

10,000 POUND CAPACITY
SURFACE MOUNTED
TWO-POST LIFTS

MODELS:

XPR-10
XPR-10A
XPR-10-168
XPR-10A-168
XPR-10-LP
XPR-10A-LP
XPR-10-LP-168
XPR-10A-LP-168
XPR-7A
XPR-7A-168
XPR-7A-LP
XPR-7A-LP-168



READ FIRST



Do not operate this machine until you read and understand all the dangers, warnings and cautions in this manual.

ORIGINAL INSTRUCTIONS IN ENGLISH LANGUAGE

Keep this operation manual near the machine at all times. Make sure that ALL USERS read this manual.

RECEIVING

The shipment should be thoroughly inspected as soon as it is received. The signed Bill of Lading is acknowledgement by the shipping carrier as receipt of this product as listed in your invoice as being in a good condition of shipment. If any of these goods listed on this Bill of Lading are missing or damaged, do not accept goods until the shipping carrier makes a notation on the freight bill of the missing or damaged goods. Do this for your own protection.

BE SAFE

Your new lift was designed and built with safety in mind. However, your overall safety can be increased with proper training and thoughtful operation on the part of the operator. DO NOT operate or repair this equipment without reading this manual and the important safety instructions shown inside. Keep this operation manual near the lift at all times. Make sure that ALL USERS read and understand this manual.

BP BendPak
PROVIDING AUTOMOTIVE SERVICE SOLUTIONS

1645 Lemonwood Dr.
Santa Paula, CA. 93060, USA
Toll Free 1-800-253-2363
Tel: 1-805-933-9970
Fax: 1-805-933-9160
www.bendpak.com

2. Vendor Information

Approved Vendor	Vendor Part #	Contact #	Preferred Vendor
1)			

PART SPECIFICATION FORM

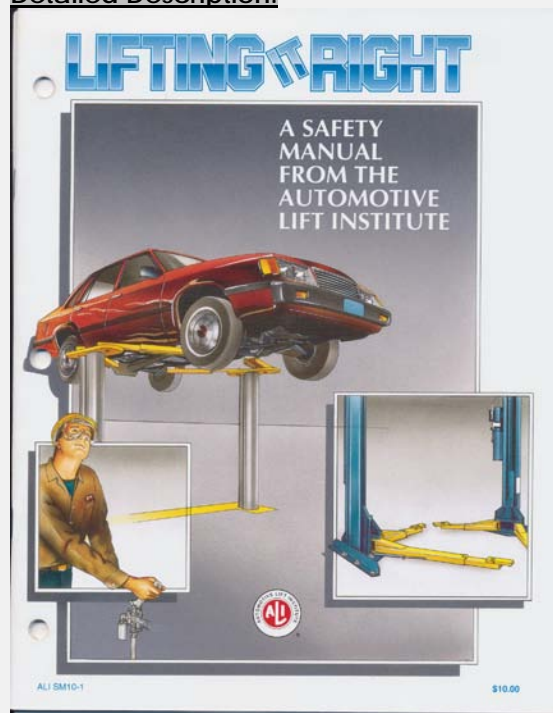
BENDPAK Number:	5900147
MRP Description:	SAFETY MANUAL ALI / SM 93-1
Date:	12/28/2010
ECO :	00431

1. Engineering Specification

Application:

ALI SAFETY MANUAL

Detailed Description:



2. Vendor Information

Approved Vendor	Vendor Part #	Contact #	Preferred Vendor
1)			

PART SPECIFICATION FORM

BENDPAK Number:	5900151
MRP Description:	BENDPAK #90 WARRANTY CARD
Date:	12/28/2010
ECO :	00431

1. Engineering Specification

Application:

CUSTOMER WARRANTY CARD

Detailed Description:



WARRANTY REGISTRATION CARD

This warranty card MUST be filled out and returned to the factory immediately. Online registration is also available at: www.bendpak.com/support/register-your-product. Your cooperation will help us contact you with future updates, application notes, technical service bulletins and/or help expedite any possible warranty adjustments.

MODEL NO: _____ SERIAL NO: _____ PURCHASE DATE: ____ / ____ / ____

NAME: _____

COMPANY NAME: _____

ADDRESS: _____

CITY: _____ STATE: _____ ZIP: _____

BUSINESS PHONE: (____) _____ FAX: (____) _____

CELL PHONE: (____) _____ OTHER PHONE: (____) _____

PURCHASED FROM (DEALER) COMPANY NAME: _____

ADDRESS: _____

CITY: _____ STATE: _____ ZIP: _____

BUSINESS PHONE: (____) _____ FAX: (____) _____

Thank you for your cooperation.

2. Vendor Information

Approved Vendor	Vendor Part #	Contact #	Preferred Vendor
1)			

PART SPECIFICATION FORM

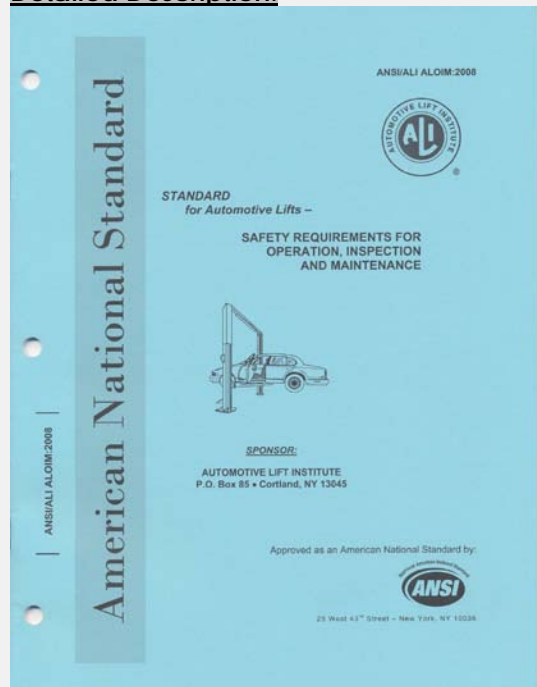
BENDPAK Number:	5900152
MRP Description:	ALIGN OIM OPERATION INSPECTION & MAINTENANCE
Date:	12/28/2010
ECO :	00431

1. Engineering Specification

Application:

ALI OPERATION INSPECTION & MAINTENANCE MANUAL

Detailed Description:



2. Vendor Information

Approved Vendor	Vendor Part #	Contact #	Preferred Vendor
1)			

PART SPECIFICATION FORM

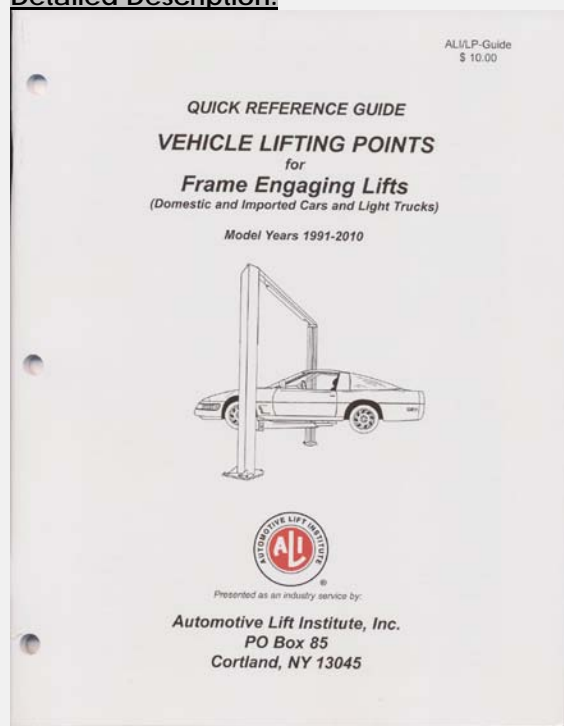
BENDPAK Number:	5900280
MRP Description:	ALI/LP FRAME ENGAGING LIFTS GUIDE
Date:	12/28/2010
ECO :	00431

1. Engineering Specification

Application:

ALI LIFTING GUIDE

Detailed Description:



2. Vendor Information

Approved Vendor	Vendor Part #	Contact #	Preferred Vendor
1)			

PART SPECIFICATION FORM

BENDPAK Number:	5905109
MRP Description:	WARNING ALI/WL 101
Date:	06/18/2013
ECO :	00605

1. Engineering Specification

Application:

ALI 2 POST SAFETY STICKER KIT

Detailed Description:

SIZE: 14" L x 8.5" W (356mm x 216mm)

Automotive Lift Institute, Inc
WL 101 Series
Label Kit

SAFETY INSTRUCTIONS
Read operating and safety manuals before using lift.

SAFETY INSTRUCTIONS
Proper maintenance and inspection is necessary for safe operation.

SAFETY INSTRUCTIONS
Do not operate a damaged lift.

The messages and pictographs shown are generic in nature and are meant to generally represent hazards common to all automotive lifts regardless of specific style. Funding for the development and validation of these labels was provided by the Automotive Lift Institute, PO Box 33116 Indianapolis, IN 46233. They are provided by copyright. Set of labels may be obtained from ALI or its member companies.

© 1992 by ALI, Inc. ALI/WL101

2. Vendor Information

Approved Vendor	Vendor Part #	Contact #	Preferred Vendor
1)			

PART SPECIFICATION FORM

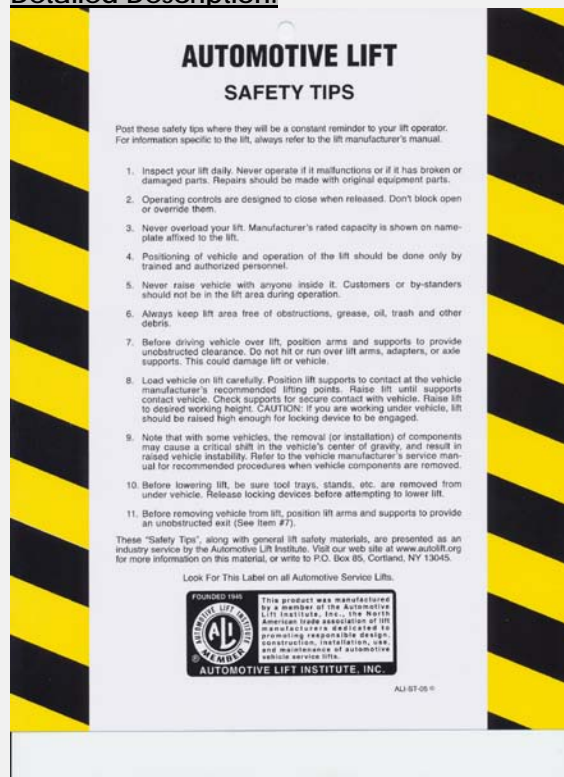
BENDPAK Number:	5905151
MRP Description:	SAFETY TIPS CARD ALI-ST 90
Date:	12/28/2010
ECO :	00431

1. Engineering Specification

Application:

ALI SAFETY TIPS

Detailed Description:



2. Vendor Information

Approved Vendor	Vendor Part #	Contact #	Preferred Vendor
1)			