

SERVICE AND PARTS MANUAL

AUSCO HYDRAULIC JACKS

SS 567A

MODEL D-6600
EFFECTIVE MAR. 1, 1958

DETAIN

FRANCHISED SERVICE DEPOTS

Alabama	Southern Jack Company, 615 N. Ninth Street	Birmingham 4
Arizona	Alemite Stewart Warner, 326 N. Third Avenue	Phoenix
Arkansas	Alexander Inc., 1723 East Capitol	Little Rock
California	Kimmerle Brothers, 2300 S. Hill Street	Los Angeles
	Kimmerle Brothers, 226 Eleventh Street	San Francisco 3
	Kimmerle Brothers, 2230 Inyo Street	Fresno
	Sam Pedler Hydraulic Jack Service, 2260 National Avenue	San Diego 13
Colorado	Quinn & McGill, 437 Broadway, Box 1498	Denver 1
Connecticut	A & L Hydraulic Jack Company, 294 Kimberly Avenue	New Haven 11
Florida	Miami Equipment Repair Company, 1927 N. W. 36th Street	Miami
	Jansen Hydraulic Service, 263 Park Street	Jacksonville
	Liston Auto Machine & Grinding Service, 115 W. 7th Ave.	Tampa
Georgia	Equipment Service Company, 352 Techwood Drive, N.W.	Atlanta
	Turner & Cole, 353 W. Peachtree Street, N.E.	Atlanta 8
Idaho	Hydraulic Jack & Equipment Service, 4449 Chinden Blvd.	Boise
Illinois	Chicago Jack Service, 7848 S. Hermitage Avenue	Chicago 20
	Servall Engineering Company, 3939 N. Kedzie Avenue	Chicago 18
	Bemis Hydraulic Jack & Equipment Co., 1426 N.E. Adams	Peoria
Indiana	White-Evans Jack Service, 38 Shelby Street	Indianapolis
Iowa	King Motor Service, 323 E. 4th Street	Davenport
	Turner's Hydraulic Service, 1617 Sixth Avenue	Des Moines 14
Kansas	Wichita Hydraulic Service, 148 No. Water Street	Wichita
Kentucky	Queen Hydraulic, 13th and Rowan Streets	Louisville 3
Louisiana	Beerman Precision Machine Works, 2021 Thalia Street	New Orleans 3
Maryland	Holdridge Engineering Company, 1728-30 Lamont Avenue	Baltimore 2
Massachusetts	Boston Hydraulic Sales & Service, 1182 Columbus Avenue	Boston
Michigan	Hydraulic Service, Inc., 436 Bond Avenue, N.W.	Grand Rapids
	Hydraulic Jack Service Co., 3636 Buchanan Avenue, S.W.	Grand Rapids 8
	Hydraulic Service, Inc., 2715 Fifth at Grand River	Detroit 1
Minnesota	Hydraulic Jack & Equipment Serv. Co., 108 Lyndale Ave., N.	Minneapolis 3
Mississippi	Whit's Hydraulic Service, 1313-15 S. Gallatin Street	Jackson
Missouri	Hydraulic Service Company, 3739 Woodland	Kansas City 3
	Equipment Service Company, 3218 Delmar Blvd.	St. Louis 3
Montana	Denison Machine Company, 427 St. Johns Avenue	Billings
Nebraska	American Auto Service, 1116-18 Jackson Street	Omaha 8
New Jersey	Metro Hydraulic Jack Company, 237 Oliver Street	Newark
New Mexico	Wheels & Brakes, Inc., 1600 Second, N. W.	Albuquerque
New York	Buffalo Hydraulic Jack Service, 1675 Broadway	Buffalo 12
	Equipment Custom Serv. Corp., 601 W. 47th St. at 11th Ave.	New York 19
	Ace Hydraulic Service, Inc., 417 Wyoming Street	Syracuse 4
	Duplex Equipment Company, 206 S. McBride	Syracuse
	Metro Hydraulic Jack Service, 5200 Foster Avenue	Brooklyn 3
	Albany Hyd. & Lube Serv., Columbia Turnpike, P.O. Box 14	Rensselaer
North Carolina	Carolina Jack Service, 1200 Asheboro	Greensboro
	Diesel Injection & Hydraulic Service, 122 Atandt	Charlotte
Ohio	Eureka Tool & Hydraulic Service, 3816 N. Bend Road	Cincinnati 11
	Ohio Hydraulic Jack Service Co., 330 N. Arlington Street	Akron 5
	Ohio Hydraulic Service Company, 3826 Payne Avenue	Cleveland 11
	Hydraulic Service, Inc., 14 N. Huron Street	Toledo
	Ohio Hydraulic Service of Columbus, Rear 106-110 N. Grant	Columbus 15
Oklahoma	Hydraulic Equipment Company, 417 W. California	Oklahoma City
Oregon	Equipment Service Company, 1014 N. W. Hoyt Street	Portland
Pennsylvania	Equipment Service Company, 1921 Callowhill Street	Philadelphia
	J & M Hydraulic Service, 4063 Liberty Avenue	Pittsburgh 24
South Carolina	Columbia Hydraulics, Highway 387	West Columbia
Tennessee	Alcott Lubrication Sales & Service, 336 Court Street	Memphis 3
	The Southern Company, Georgia & Hernando Streets	Memphis 2
	White Equipment Service, 929 Granada Street	Nashville
Texas	Equipment Service Company, 306 S. Walton	Dallas
	Hydraulic Equipment Service Co., 1021 N. San Jacinto St.	Houston
	Hydraulic Equipment Service, 346 Avenue "H"	Lubbock
	Instrument Service Company, 1013 Avenue "B"	San Antonio 2
Utah	Wilson's Transport Supply, 665 South State Street	Salt Lake City 1
Virginia	Petroleum Engineering, 5520 Virginia Beach Blvd.	Norfolk
	Moores Jack & Equipment Company, 1011 W. Broad Street	Richmond 20
	Excellaweld Company of Roanoke, Route 24	Roanoke
Washington	Universal Repair Shop, 1611 Boylston Avenue	Seattle 22
	Carburetor & Electric Company, 221 Monroe Street	Spokane
Wisconsin	Hader Industries, 1246 N. Sixth Street	Milwaukee

WARRANTY

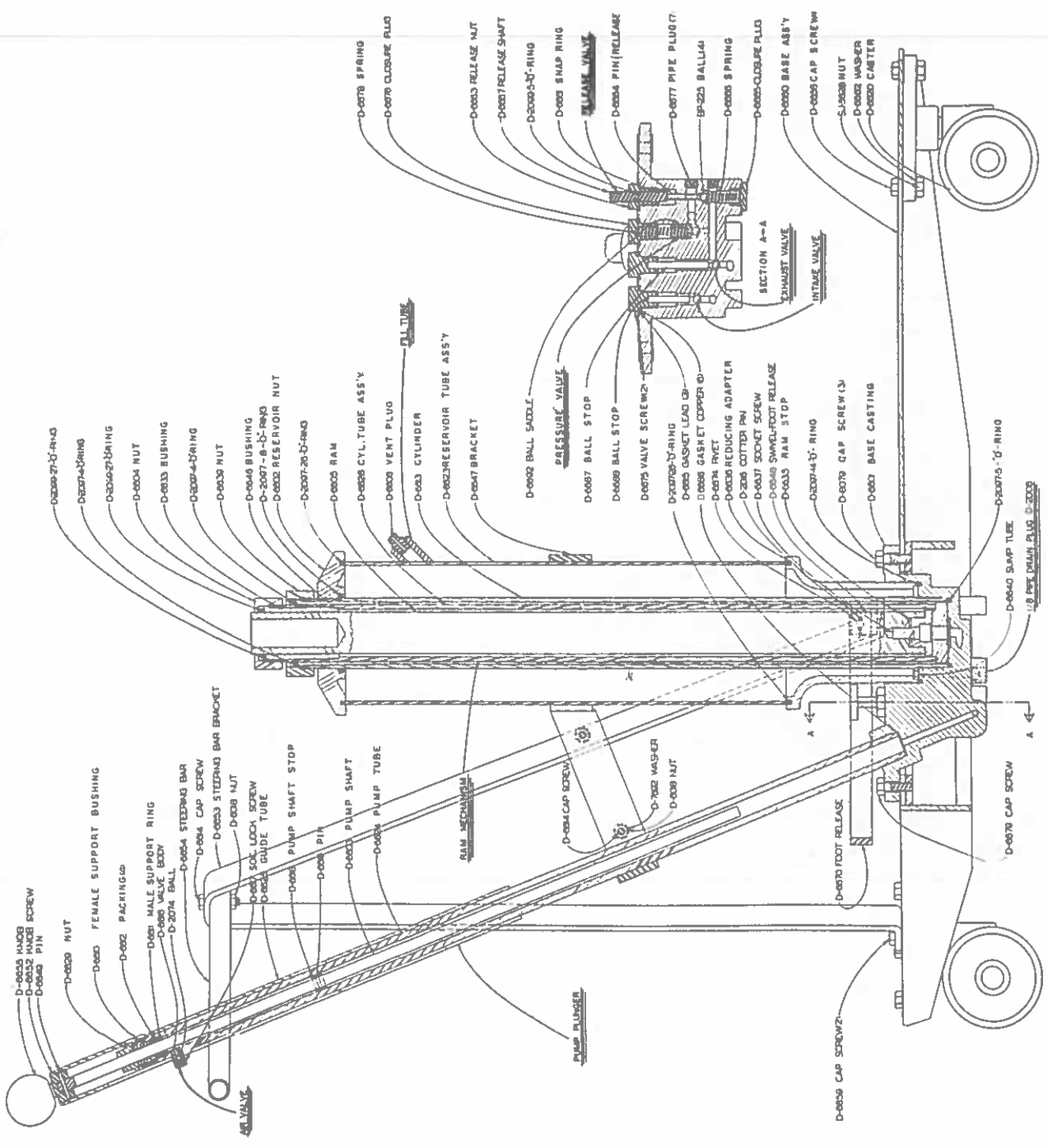
These Jacks are fully guaranteed against defective material and workmanship when submitted or shipped prepaid to the nearest franchised service depot or the factory, ninety days from the date of delivery to the user. This warranty does not cover jacks that have been altered or attachments added to them which are not recommended by the manufacturer. The use of hydraulic brake or shock absorber fluid, alcohol, Kerosene or other deleterious fluids voids this warranty as does improper use of jacks through overloading or any other abusive practice or accident.

PARTS LIST

Part No.	Description	Price Each
D-6601	Base Casting	
D-6602	Reservoir Nut	
D-6603	Pump Shaft	
D-6604	Nut	
D-6605	Ram	
D-6606	Vent Plug (With Instruction Tag)	
D-6610	Female Support Bushing	
D-6611	Male Support Ring	
D-6612	Packing (Pump Piston "V")	
D-6613	Cylinder Tube	
D-6614	Cap Screw (5/-18 x 1 $\frac{3}{4}$ (4)	
D-6615	Gasket (Obsolete)	
D-6616	Valve Body	
D-6617	Lock Screw (Socket)	
D-6618	Stop (Pump Shaft)	
D-6619	Taper Pin	
D-6620	Caster	
D-6623	Reservoir Tube Ass'y.	
D-6624	Pump Tube	
D-6625	Guide Tube	
D-6628	Cyl. Tube Ass'y	
D-6629	Nut (Retaining)	
D-6633	Bushing	
D-6635	Ram Stop	
D-6636	Reducing Adapter	
D-6637	Hex Socket Cap Screw (7/16-14 x 1 $\frac{1}{2}$)	

Part No.	Description	Price Each
D-6639	Nut	
D-6640	Sump Tube	
D-6646	Bushing	
D-6647	Bracket Weld Ass'y	
D-6648	Swivel	
D-6649	Pin (Pump Handle)	
D-6652	Knob Screw	
D-6653	Steering Bar Bracket	
D-6654	Steering Bar	
D-6655	Pump Knob	
D-6658	Cap Screw—Hex Hd. 1/2-20 x 1/2" (10)	
D-6659	Cap Screw—Hex Hd. 1/4-20 x 3/4" (2)	
D-6660	Base Ass'y	
D-6661	Snap Ring	
D-6662	Washer (1/4 Shakeproof Int.) (12)	
D-6663	Release Nut	
D-6664	Release Pin	
D-6665	Closure Pin	
D-6666	Spring (Release)	
D-6667	Release Shaft	
D-6670	Foot Release Ass'y	
D-6674	Rivet	
D-6675	Valve Screw	
D-6676	Closure Plug	
D-6677	Pipe Plug (1/16 Pipe — Socket)	
D-6678	Spring (Pressure Valve)	

Part No.	Description	Price Each
D-6679	Hex Hd. Cap Screw (5/16-18 x 1 $\frac{1}{4}$) z	
D-6680	Name Plate (Trans.) Jack ASMC	
D-6685	Name Plate (Trans. Jack) Fleet	
D-6686	Gasket (Copper—6 Req'd)	
D-6687	Ball Stop	
D-6688	Ball Stop	
D-6692	Ball Saddle	
BP-225	Ball	
D-2006	1/8" Pipe Drain Plug	
D-2016	Cotter Pin	
D-2074	Ball	
D-2097-4	"O" Ring (2 $\frac{1}{8}$ x2 $\frac{3}{8}$ x1/8")	
D-2097-5	"O" Ring (2 $\frac{1}{8}$ x2 $\frac{3}{8}$ x1/8")	
D-2097-14	"O" Ring (3 $\frac{1}{4}$ x3 $\frac{1}{2}$ x1/8")	
D-2097-26	"O" Ring (4 $\frac{3}{4}$ x5x1/8")	
D-2097-8	"O" Ring (2 $\frac{1}{2}$ x2 $\frac{3}{4}$ x1/8")	
D-2099-5	"O" Ring (1/4x3/8x1/8")	
D-2099-27	"O" Ring (1 $\frac{1}{2}$ x1 $\frac{3}{4}$ x1/8")	
SJ-5628	Nut	
D-6018	5/16-18 Nut	
D-7692	5/16" Int. Shake proof Lock Washer	
D-8079	Cap Screw	



- D-0001 MALE SCREW
- D-0002 PIN
- D-0003 NUT
- D-0004 FEMALE SUPPORT BUSHING
- D-0005 PACKING
- D-0006 MALE SUPPORT RING
- D-0007 VALVE BODY
- D-0008 BALL
- D-0009 STEERING BAR
- D-0010 CAP SCREW
- D-0011 STEERING BAR BRACKET
- D-0012 NUT
- D-0013 LOCK SCREW
- D-0014 GUIDE TUBE
- D-0015 PUMP SHAFT STOP
- D-0016 PIN
- D-0017 PUMP SHAFT
- D-0018 PUMP TUBE
- D-0019 RAM PLUNGER

- D-0020 CAP SCREW
- D-0021 VALVE
- D-0022 BALL
- D-0023 STEERING BAR BRACKET
- D-0024 NUT
- D-0025 LOCK SCREW
- D-0026 GUIDE TUBE
- D-0027 PUMP SHAFT STOP
- D-0028 PIN
- D-0029 PUMP SHAFT
- D-0030 PUMP TUBE
- D-0031 RAM PLUNGER
- D-0032 CAP SCREW
- D-0033 VALVE
- D-0034 BALL
- D-0035 STEERING BAR BRACKET
- D-0036 NUT
- D-0037 LOCK SCREW
- D-0038 GUIDE TUBE
- D-0039 PUMP SHAFT STOP
- D-0040 PIN
- D-0041 PUMP SHAFT
- D-0042 PUMP TUBE
- D-0043 RAM PLUNGER

- D-0044 CAP SCREW
- D-0045 VALVE
- D-0046 BALL
- D-0047 STEERING BAR BRACKET
- D-0048 NUT
- D-0049 LOCK SCREW
- D-0050 GUIDE TUBE
- D-0051 PUMP SHAFT STOP
- D-0052 PIN
- D-0053 PUMP SHAFT
- D-0054 PUMP TUBE
- D-0055 RAM PLUNGER
- D-0056 CAP SCREW
- D-0057 VALVE
- D-0058 BALL
- D-0059 STEERING BAR BRACKET
- D-0060 NUT
- D-0061 LOCK SCREW
- D-0062 GUIDE TUBE
- D-0063 PUMP SHAFT STOP
- D-0064 PIN
- D-0065 PUMP SHAFT
- D-0066 PUMP TUBE
- D-0067 RAM PLUNGER

- D-0068 CAP SCREW
- D-0069 VALVE
- D-0070 BALL
- D-0071 STEERING BAR BRACKET
- D-0072 NUT
- D-0073 LOCK SCREW
- D-0074 GUIDE TUBE
- D-0075 PUMP SHAFT STOP
- D-0076 PIN
- D-0077 PUMP SHAFT
- D-0078 PUMP TUBE
- D-0079 RAM PLUNGER
- D-0080 CAP SCREW
- D-0081 VALVE
- D-0082 BALL
- D-0083 STEERING BAR BRACKET
- D-0084 NUT
- D-0085 LOCK SCREW
- D-0086 GUIDE TUBE
- D-0087 PUMP SHAFT STOP
- D-0088 PIN
- D-0089 PUMP SHAFT
- D-0090 PUMP TUBE
- D-0091 RAM PLUNGER

- D-0092 CAP SCREW
- D-0093 VALVE
- D-0094 BALL
- D-0095 STEERING BAR BRACKET
- D-0096 NUT
- D-0097 LOCK SCREW
- D-0098 GUIDE TUBE
- D-0099 PUMP SHAFT STOP
- D-0100 PIN
- D-0101 PUMP SHAFT
- D-0102 PUMP TUBE
- D-0103 RAM PLUNGER
- D-0104 CAP SCREW
- D-0105 VALVE
- D-0106 BALL
- D-0107 STEERING BAR BRACKET
- D-0108 NUT
- D-0109 LOCK SCREW
- D-0110 GUIDE TUBE
- D-0111 PUMP SHAFT STOP
- D-0112 PIN
- D-0113 PUMP SHAFT
- D-0114 PUMP TUBE
- D-0115 RAM PLUNGER

- D-0078 SPRING
- D-0079 CLOSURE PLUG
- D-0080 RELEASE NUT
- D-0081 RELEASE SHAFT
- D-0082 O-RING
- D-0083 SNAP RING
- D-0084 RELEASE VALVE
- D-0085 PIN (RELEASE)
- D-0086 PIPE PLUG (7)
- D-0087 BALL (4)
- D-0088 SPRING
- D-0089 CLOSURE PLUG
- D-0090 BASE ASSY
- D-0091 CAP SCREW
- D-0092 NUT
- D-0093 WASHER
- D-0094 CARTER

- D-0095 BALL SADDLE
- D-0096 PRESSURE VALVE
- D-0097 BALL STOP
- D-0098 BALL STOP
- D-0099 VALVE SCREW (2)
- D-0100 O-RING
- D-0101 GASKET LEAD (3)
- D-0102 RIVET
- D-0103 GASKET COPPER (3)
- D-0104 RIVET
- D-0105 REDUCING ADAPTER
- D-0106 COTTER PIN
- D-0107 SOCKET SCREW
- D-0108 SWIVEL-FOOT RELEASE
- D-0109 RAM STOP
- D-0110 O-RING
- D-0111 GAP SCREW (3)
- D-0112 BASE CASTING

- D-0113 SWIVEL-FOOT RELEASE
- D-0114 RAM STOP
- D-0115 O-RING
- D-0116 GAP SCREW (3)
- D-0117 BASE CASTING
- D-0118 SWIVEL-FOOT RELEASE
- D-0119 RAM STOP
- D-0120 O-RING
- D-0121 GAP SCREW (3)
- D-0122 BASE CASTING
- D-0123 SWIVEL-FOOT RELEASE
- D-0124 RAM STOP
- D-0125 O-RING
- D-0126 GAP SCREW (3)
- D-0127 BASE CASTING

- D-0128 SWIVEL-FOOT RELEASE
- D-0129 RAM STOP
- D-0130 O-RING
- D-0131 GAP SCREW (3)
- D-0132 BASE CASTING
- D-0133 SWIVEL-FOOT RELEASE
- D-0134 RAM STOP
- D-0135 O-RING
- D-0136 GAP SCREW (3)
- D-0137 BASE CASTING
- D-0138 SWIVEL-FOOT RELEASE
- D-0139 RAM STOP
- D-0140 O-RING
- D-0141 GAP SCREW (3)
- D-0142 BASE CASTING

INSTRUCTIONS FOR USE AND MAINTENANCE OF TWO STAGE TRANSMISSION HANDLER

TO ASSEMBLE:

1. Set carrier in ram socket on jack.
2. Mount adapter on carrier, positioning so that safety chain is directly above front to back tilt screw (this screw is connected to adapter mounting plate on carrier).

TO OPERATE:

1. Jack is ready to operate after carrier and adapter have been installed. Prior to operation, eliminate any air-bound condition that may have developed in transportation. This is listed "1" under "JACK WILL NOT OPERATE".
2. For best results operate the pump slowly up and down. This allows the maximum amount of oil to enter pump.
3. Pump plunger may stick when unit is new. This is due to a static sealing of pump seals and diminishes with use.
4. **CAUTION MUST BE USED** whenever servicing Cadillac, Lincoln, or other transmissions that may require considerable tilting; one leg should always be directly under Bell Housing of transmission toward front of vehicle.
5. Lowering speed is controlled by the amount of pressure on the foot pedal.

JACK WILL NOT OPERATE:

1. **JACK MAY BE "AIR-BOUND"**. Loosen socket lock screw (part No. D-6617), depress foot release valve, and operate pump handle with full stroke six or seven times. Tighten socket lock screw before operating jack.
2. **DIRT IN VALVE LINE**. Internal flushing is done the same as if jack is "air-bound". It dislodges foreign particles that gather around the balls. This procedure does not correct a condition of "dirty oil". Frequent occurrences of this trouble would indicate the necessity of draining the oil and re-filling with a recommended hydraulic jack oil. To drain oil, depress rams to low height and remove D-2006 1/8" pipe drain plug.
3. For major repairs, return jack to nearest Franchised Service Depot.

CHECK OIL LEVEL:

1. With rams depressed, oil level should be even with filler hole.
2. Use only a recommended hydraulic jack oil, as use of brake fluid and other deleterious fluids causes damage to cups and "O" ring seals and voids the guarantee of this jack.

GENERAL INFORMATION:

1. Accumulated dirt and grit on rams results in premature wearing of seals causing leaks. **KEEP YOUR JACK CLEAN.**
2. The automatic pressure valve is pre-set at 1000 pounds. This prevents overloading the jack.
3. Oil moving parts frequently to prevent rusting, excessive wear, and to simplify operation.

TO ORDER PARTS:

Order parts from your nearest Franchised Service Depot. Order by part number (not item number) and give complete name of the part.

All Prices F.O.B. St. Joseph, Michigan and subject to change without notice.

AUTO SPECIALTIES MANUFACTURING COMPANY
St. Joseph, Michigan

Printed in U.S.A.