

MODEL 10-26
CAPACITY 1500 LB.
DATE NOVEMBER 1966

INSTALLATION INSTRUCTIONS FOR THRUST BEARING WELL

1. For trucks, locate center of hole for thrust bearing tube (A) by measuring 9" minimum from side of truck floor. Drill a 3-1/2" diameter hole for thrust bearing tube in truck floor so that well plate (B) will fit between frame members (1) and thrust bearing tube (A) Fig. 1.
2. Bolt plate (C) to floor as shown in Fig. 1.
3. Bolt (1/2" dia. bolts) or weld well plate (B) to frame as shown in Fig. 1.
4. Weld thrust bearing tube (A) to well plate (B) as shown in Fig. 1.
5. For extra heavy loads, it may be necessary to use additional bracing to keep frame members from bending out of shape.
6. IMPORTANT: Lock pin hole (D) should be located toward the rear right hand side of the truck. See fig. 1.
7. Truck structure may require modification of the above instructions and will require bracing to suit the particular structure.
8. Install well for stationary loading platform or dock by following the same procedure as outlined for trucks, with bracing modified according to structure of platform or dock as shown in Fig. 2.

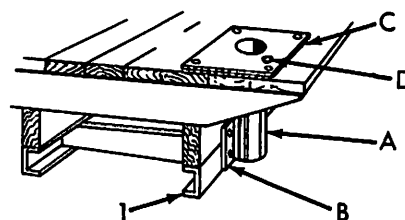


Fig. 1. Truck Bed

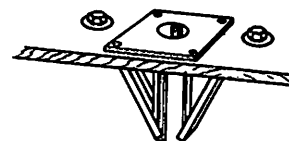


Fig. 2. Platform or Dock

SERVICE INSTRUCTIONS FOR PROPER MAINTENANCE

LUBRICATION

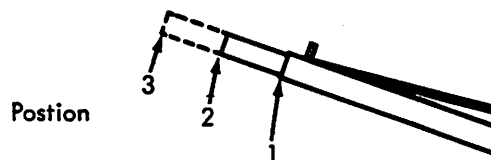
For added service life and ease of operation, lubricate wheels and hinge points frequently.

POWER UNIT

Refill the power unit with recommended oil only. Never use hydraulic brake fluid or other harmful fluids which cause damage to cups and packings and also voids the guarantee on this unit.

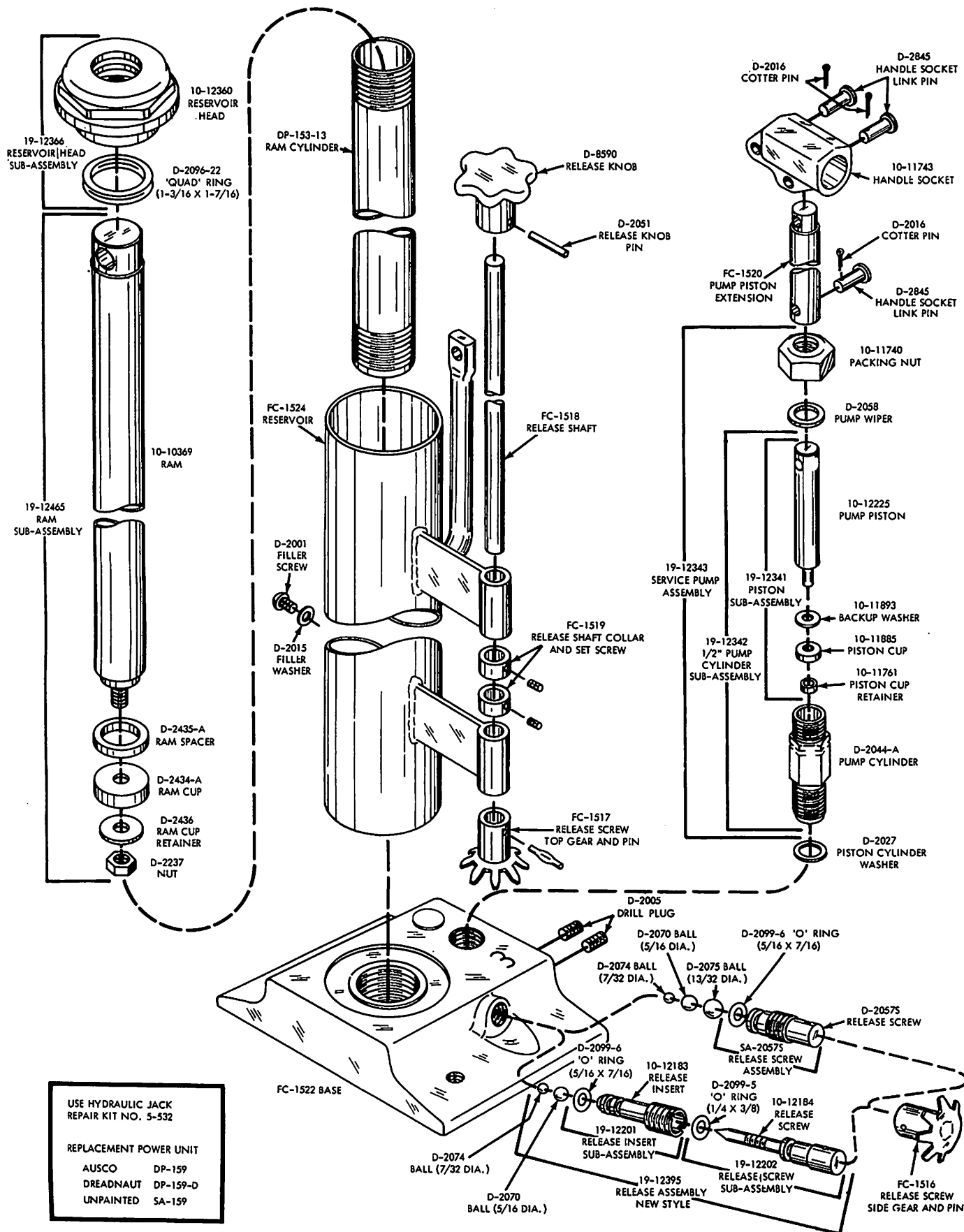
Oil should be added to the level of the filler plug in the reservoir cylinder when the ram is completely retracted.

BOOM CAPACITY CHART

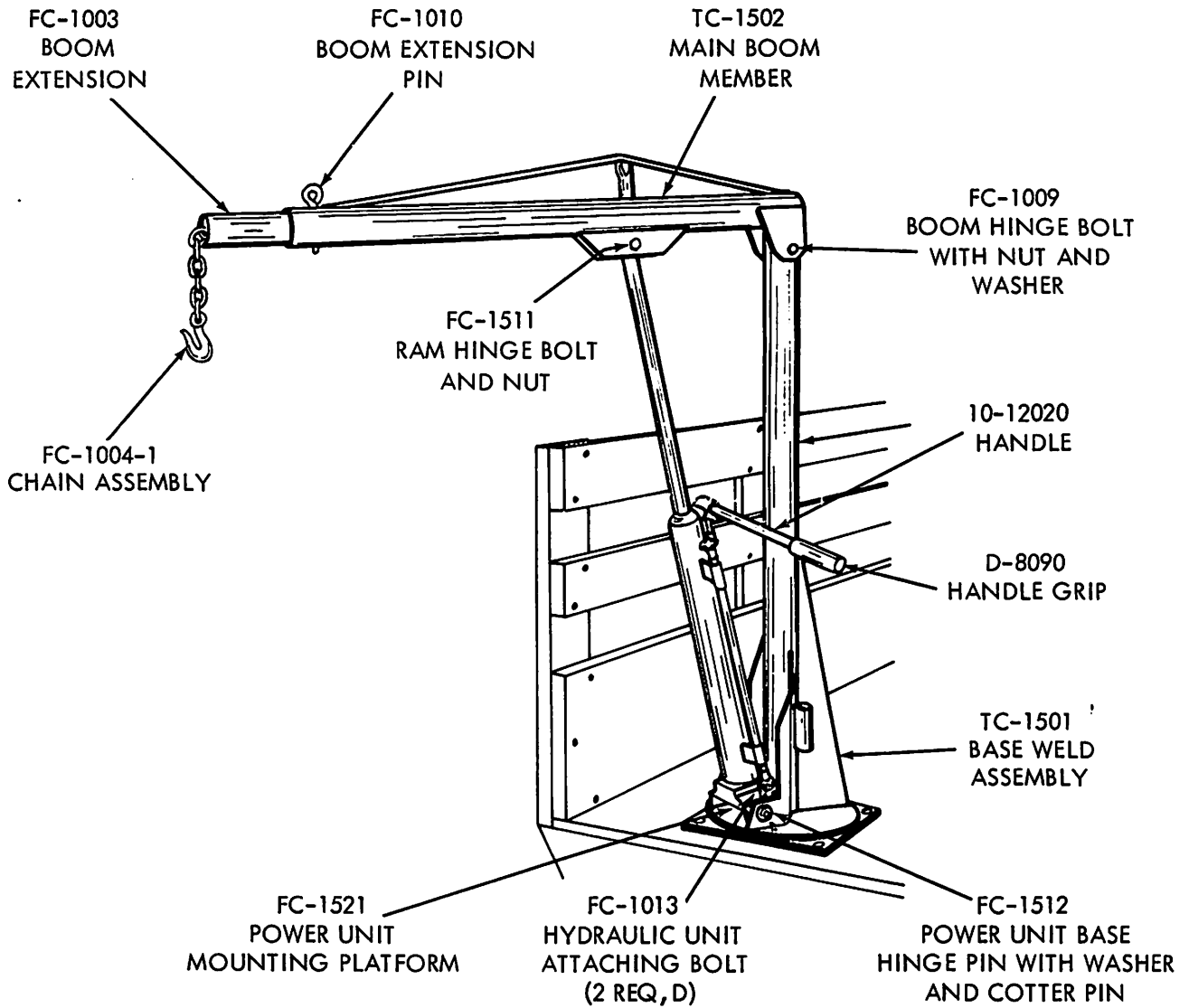


Position	Capacity 3/4 Ton Model
1	1500 Lbs.
2	1100 Lbs.
3	750 Lbs.

1. Use crane on level surface wherever possible.
2. Do not overload crane. Lifting capacity with boom fully telescoped is shown on the label. For capacities at other boom positions see boom position capacity chart above.
3. Release the load slowly by loosening release knob.



BOOM AND BASE ASSEMBLY



WARRANTY

These Cranes are fully guaranteed against defective material and workmanship when submitted or shipped prepaid to the nearest franchised service depot, ninety days from the date of delivery to the user. This warranty does not cover cranes that have been altered or attachments added to them which are not recommended by the manufacturer. The use of hydraulic brake or shock absorber fluid, alcohol, Kerosene or other deleterious fluids voids this warranty as does improper use of cranes through overloading or any other abusive practice or accident.