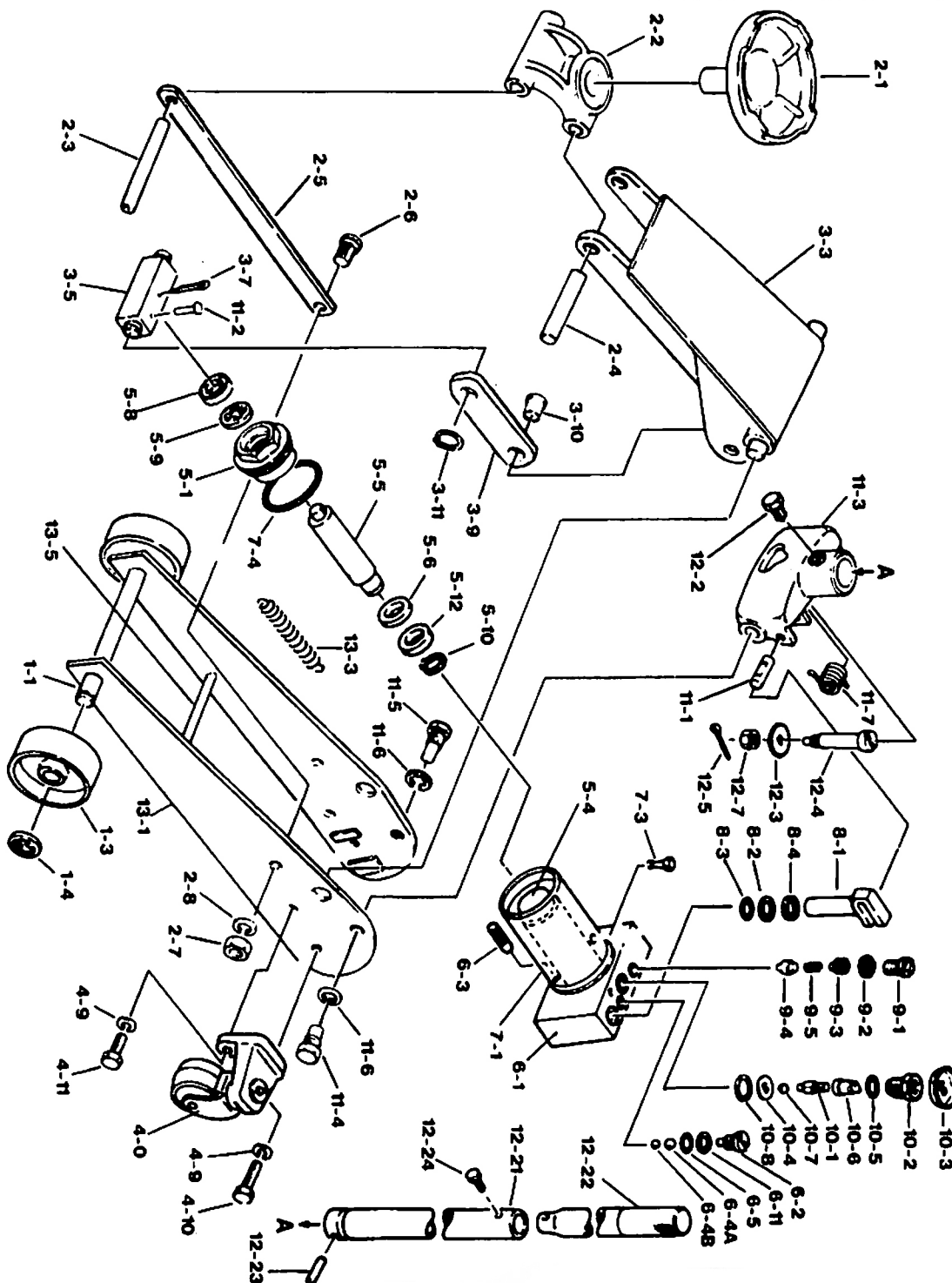


Astro Pneumatic Tool Company - Parts Breakdown Report

14-May-97

Model No
225HF

Product Description
2 1/4 Ton Floor Jack



225HF 2-1/4 TON HEAVY DUTY GARAGE JACK

<u>ASTRO PART #</u>	<u>DESCRIPTION</u>	<u>LIST PRICE</u>
FJ225HF-1-1	FRONT WHEEL SHAFT	
FJ225HF-1-3	FRONT WHEEL	
FJ225HF-1-4	SNAP RING	
FJ225HF-2-1	SADDLE	
FJ225HF-2-3	LINK ROD PIN (A)	
FJ225HF-2-5	LINK ROD	
FJ225HF-2-6	LINK PIN (B)	
FJ225HF-2-7	NUT	
FJ225HF-2-8	SPRING WASHER	
FJ225HF-3-0	ARM ASS'Y.	
*FJ225HF-2-2	SADDLE BASE	
*FJ225HF-2-4	ARM PIN (A)	
FJ225HF-3-3	ARM	
*FJ225HF-3-9	LINK	
*FJ225HF-3-10	PIN	
FJ225HF-3-1	ARM PIN	
FJ225HF-3-5	PISTON CONNECTING JOINT	
FJ225HF-3-6	SNAP RING	
FJ225HF-3-7	COTTER PIN	
FJ225HF-3-11	SNAP RING	
FJ225HF-4-0	REAR CASTER ASS'Y	
FJ225HF-4-9	SPRING WASHER	
FJ225HF-4-10	BOLT	
FJ225HF-4-11	BOLT	
FJ225HF-5-0	OIL BOX ASS'Y.	
*FJ225HF-5-4	CYLINDER	
*FJ225HF-6-1	OIL BOX	
*FJ225HF-6-3	OIL STRAINER	
FJ225HF-7-1	OIL TANK	

1/1/97

Prices are subject to change without notice.

225HF 2-1/4 TON HEAVY DUTY GARAGE JACK

<u>ASTRO PART #</u>	<u>DESCRIPTION</u>	<u>LIST PRICE</u>
FJ225HF-5-1	TANK NUT	
FJ225HF-5-5	PISTON ROD	
FJ225HF-5-6	PISTON PACKING RETAINER	
FJ225HF-5-7	BACK-UP RING	
FJ225HF-5-8	DUST SEAL	
FJ225HF-5-9	X-RING	
FJ225HF-5-10	RETAINING RING	
FJ225HF-5-11	WASHER	
FJ225HF-5-13	O-RING	
FJ225HF-6-2	BOLT	
FJ225HF-6-4A	STEEL BALL	
FJ225HF-6-4B	STEEL BALL	
FJ225HF-6-5	O-RING	
FJ225HF-6-11	BACK-UP RING	
FJ225HF-7-3	OIL FILL PLUG	
FJ225HF-7-4	O-RING	
FJ225HF-8-1	PUMP PLUNGER	
FJ225HF-8-2	BACK-UP RING	
FJ225HF-8-3	O-RING	
FJ225HF-8-4	OIL SEAL	
FJ225HF-9-1	SAFETY VALVE CAP PLUG	
FJ225HF-9-2	RUBBER PACKING	
FJ225HF-9-3	RETAINER	
FJ225HF-9-4	SAFETY VALVE	
FJ225HF-9-5	SPRING	
FJ225HF-9-6	PACKING	

225HF 2-1/4 TON HEAVY DUTY GARAGE JACK

<u>ASTRO PART #</u>	<u>DESCRIPTION</u>	<u>LIST PRICE</u>
FJ225HF-10-0	RELEASE VALVE ASS'Y.	
*FJ225HF-10-1	RELEASE VALVE	
*FJ225HF-10-2	O-RING	
*FJ225HF-10-3	RELEASE VALVE GEAR	
*FJ225HF-10-5	RELEASE VALVE LOCK NUT	
*FJ225HF-10-6	RELEASE VALVE CONNECTING ROD	
*FJ225HF-10-8	COPPER PACKING	
FJ225HF-10-4	COLLAR	
FJ225HF-10-7	STEEL BALL	
FJ225HF-11-0	HANDLE FORK ASS'Y	
*FJ225HF-11-3	HANDLE FORK	
*FJ225HF-12-2	HANDLE SET SCREW	
J225HF-12-3	RELEASE VALVE GEAR (SMALL)	
*FJ225HF-12-4	RELEASE VALVE CONNECTING BAR (B)	
*FJ225HF-12-5	COTTER PIN	
*FJ225HF-12-7	NUT	
FJ225HF-11-1	PLUNGER CONNECTING PIN	
FJ225HF-11-2	RIVET	
FJ225HF-11-4	HANDLE SHAFT(A)	
FJ225HF-11-5	HANDLE SHAFT (B)	
FJ225HF-11-6	SPRING WASHER	
FJ225HF-11-7	SPRING	
FJ225HF-12-0	HANDLE ASS'Y.	
*FJ225HF-12-21	LOWER HANDLE	
*FJ225HF-12-22	UPPER HANDLE	
*FJ225HF-12-23	SPRING PIN	
*FJ225HF-12-24	HANDLE CONNECTING BOLT	
FJ225HF-13-1	FRAME	
J225HF-13-2	OIL BOX STOPPER	

225HF 2-1/4 TON HEAVY DUTY GARAGE JACK

<u>ASTRO PART #</u>	<u>DESCRIPTION</u>	<u>LIST PRICE</u>
FJ225HF-13-3	SPRING	
FJ225HF-13-4	OIL BOX STOPPER	
FJ225HF-13-5	STOPPER	
FJ225HF-6-0	POWER UNIT ASSEMBLY	
*FJ225HF-1-4	O-RING	
*FJ225HF-3-6	RELEASE VALVE GEAR	
*FJ225HF-3-11	RELEASE VALVE LOCK NUT	
*FJ225HF-5-7	RELEASE VALVE CONNECTING ROD	
*FJ225HF-5-8	COPPER PACKING	
*FJ225HF-5-9	COLLAR	
*FJ225HF-5-11	STEEL BALL	
*FJ225HF-5-13	HANDLE FORK ASS'Y	
*FJ225HF-6-4A	HANDLE FORK	
*FJ225HF-6-4B	HANDLE SET SCREW	
*FJ225HF-6-5	RELEASE VALVE GEAR (SMALL)	
*FJ225HF-6-11	RELEASE VALVE CONNECTING BAR (B)	
*FJ225HF-7-4	COTTER PIN	
*FJ225HF-8-2	NUT	
*FJ225HF-8-3	PLUNGER CONNECTING PIN	
*FJ225HF-8-4	RIVET	
*FJ225HF-9-2	HANDLE SHAFT(A)	
*FJ225HF-9-5	HANDLE SHAFT (B)	
*FJ225HF-10-2	SPRING WASHER	
*FJ225HF-10-8	SPRING	
FJ225HF-RK	REPAIR KIT	