



Lightweight Aluminum 2 Ton Jack

MODEL NO.
5082

OPERATING INSTRUCTIONS

PARTS LIST

WARRANTY

OWNER'S RESPONSIBILITY

The owner and/or operator shall have an understanding of these operating instructions and warnings before operating the jack. Warning information shall be emphasized and understood. If the operator is not fluent in English, the instructions shall be read to and discussed with the operator in operator's native language by the purchaser/owner, making sure that the operator comprehends its content.



WARNING



For Your Safety & To Prevent Injury

1. Study, understand and follow all instructions before operating this device. This jack is to be used by professional personnel ONLY. Do not alter or modify this product in any way. Failure to heed these instructions may result in personal injury and/or property damage.
2. DO NOT exceed rated capacity.
3. The jack should be used for lifting purposes ONLY. Support load with jack stands immediately after lifting.
4. Center the load on the jack saddle. Off center loads may damage the seals, causing jack failure. Never work under a load unless it is supported by jack stands. Do not move or dolly the vehicle while on the jack
5. ALWAYS place jack on hard, level, solid ground before operating.
6. Position jack at right angle (90°) to the vehicle.
7. ALWAYS make sure the area around or under the lifted vehicle is clear and slowly lower the vehicle with special attention to the jack saddle
8. Safety valve is properly adjusted at the factory. No further adjustment is necessary.
9. When not in use, always keep the jack handle straight up and locked so it will not fall. Do not attempt to lift by the handle or saddle assembly. Use side handle to lift the jack. Do not lift in a manner that may cause personal injury to you or to others.
10. Lift only on areas of the vehicle as specified by the vehicle manufacturer.

ASSEMBLY

After receiving the package, please check if the accessories are complete.

Accessories include: 1 - Pumping Handle, 1 - Breathing Screw

RETAINING CLIP

Press the socket down and then push the Retaining Clip out from the hole in the base.

HANDLE

Remove the hex head bolt of the handle socket and put the pump handle into handle socket hole. Connect with universal joint of release valve then tighten the bolt.

OPERATION

Clear the air inside before starting to operate the jack. Take down the Seal Bolt (13) and Seal Washer (12) mounted on the Power Unit Assembly (24) with screwdriver, then mount the Breathing Screw (14) and Seal Washer (12) on. Open the release valve with pumping handle by turning counter clockwise and cycle the handle up and down 3-4 times then close the valve by turning the handle clockwise.

1. Lower lifting arm to the lowest point and put the jack in the proper position, close the release valve by turning clockwise then pump.
2. Release valve will be opened by turning handle counter clockwise and lifting arm will be lowered to the bottom.
3. If it is necessary to add more hydraulic oil into the reservoir, use a screwdriver to release bolt (13). Use a quality hydraulic oil.

LUBRICATION

All moving joints require lubrication often. Remove handle and grease the lower end of handle where it rotates in the handle socket. Using a grease gun, grease the lift arm pivot shaft grease fitting until grease appears at the end of the shaft. Oil all lift linkages, front wheels and rear casters.

MAINTENANCE

Important: When adding or replacing hydraulic fluid, always use a quality hydraulic fluid. DO NOT use brake fluid, alcohol, glycerine, detergent motor oil or dirty oil as improper fluid can cause serious internal damage to the jack.

To add hydraulic fluid: With saddle fully lowered and jack on level ground, remove filler plug. Hydraulic fluid should be filled to level of hydraulic fluid filler plug hole. If low, add hydraulic fluid as needed.

Maintenance and inspection: The owner and/or user must maintain and inspect the jack in accordance with the manufacturer's instructions.

ASTRO 1 YEAR LIMITED WARRANTY

The manufacturer warrants this equipment to the original user against defective material or workmanship for a period of 1 year from the date of purchase on repair parts and labor. The manufacturer's responsibility under this warranty is limited to the repair or replacement of defective part or parts.

The manufacturer reserves the right to determine whether the part or parts failed because of defective material, of workmanship or other causes. Failure caused by accident, alteration, misuse or improper packaging of returned units is not covered by this warranty.

All warranty repairs must be done by an Astro Tool Service Representative or Astro Factory. Any repair to the equipment other than by these authorized facilities voids this warranty. The rights under this warranty are limited to the original user and may not be transferred to subsequent owners.

This warranty is in lieu of all other warranties, express or implied including warranties of merchantability and fitness for a particular purpose.

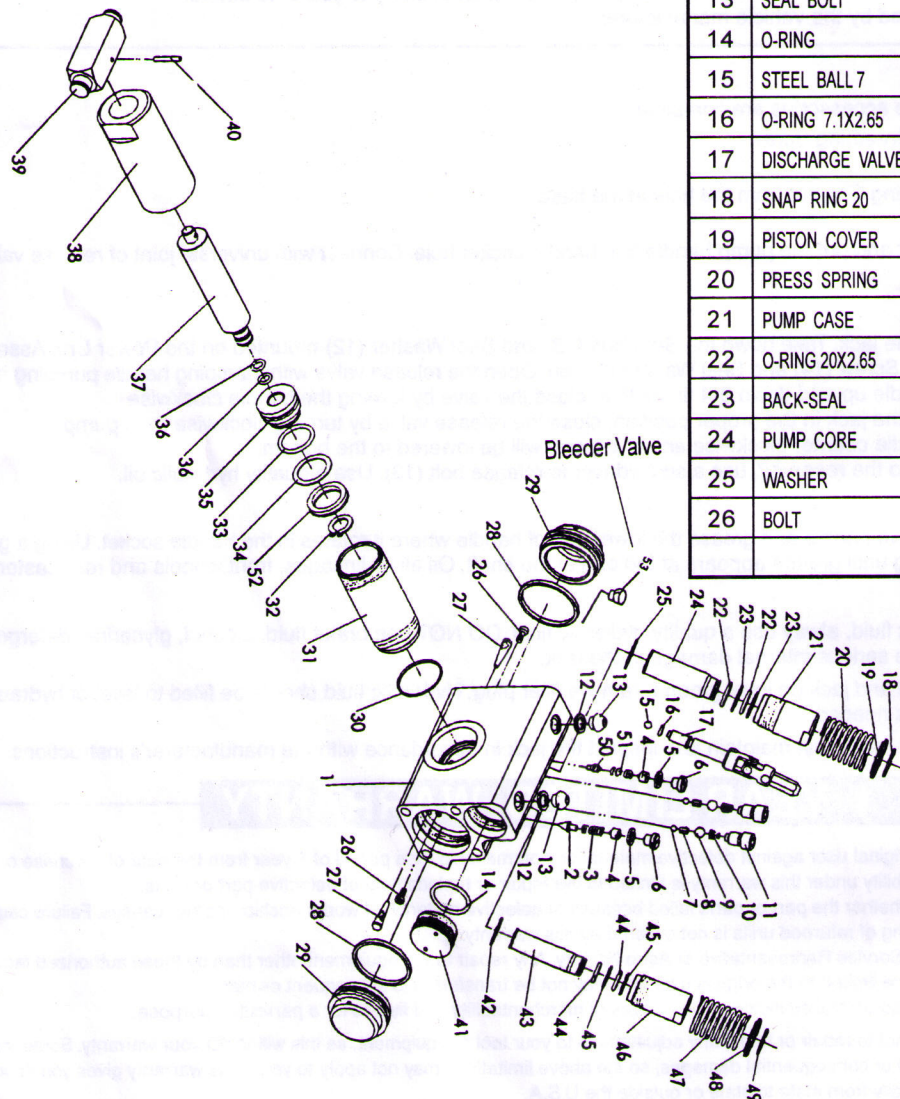
WARNING: Do not, under any circumstances, attempt to repair or make any adjustments to your tool or equipment, as this will VOID your warranty. Some states do not allow the exclusion or limitations of incidental or consequential damages, so the above limitations may not apply to you. This warranty gives you specific legal rights. You may also have other rights which vary from state to state or outside the U.S.A.



Astro Pneumatic Tool Company
1-800-820-7236

PARTS BREAKDOWN

PARTS LIST



ITEM NO	DESCRIPTION	QTY	ITEM NO	DESCRIPTION	QTY
1	ALUMINUM BASE	1	27	OIL STRAINER	2
2	SAFETY VALVE	1	28	O-RING	2
3	RELIEF VALVE SPRING	1	29	OIL COVER	2
4	REGULATE BOLT	2	30	O-RING	1
5	SEAL WASHER	2	31	HYDRAULIC CYLINDER	1
6	SEAL BOLT	2	32	SNAP RING 16	1
7	STEEL BALL 5.5	2	33	O-RING 33.5X3.55	1
8	SEPARATOR	2	34	BACK-SEAL	1
9	STEEL BALL 9	2	35	BUSH	1
10	HIGH-PRESSURE SPRING	2	36	O-RING 11.8X2.65	2
11	HIGH-PRESSURE BOLT	2	37	RAM	1
12	SEAL WASHER	2	38	ALUMINUM BAR	1
13	SEAL BOLT	2	39	BLOCK LINKAGE	1
14	O-RING	1	40	SPRING PIN 4X24	1
15	STEEL BALL 7	1	41	OIL COVER	1
16	O-RING 7.1X2.65	1	42	WASHER	1
17	DISCHARGE VALVE ROD	1	43	PUMP CORE	1
18	SNAP RING 20	1	44	O-RING 18X2.65	2
19	PISTON COVER	1	45	BACK-SEAL	2
20	PRESS SPRING	1	46	PUMP CASE	1
21	PUMP CASE	1	47	PRESS SPRING	1
22	O-RING 20X2.65	2	48	PISTON COVER	1
23	BACK-SEAL	2	49	SNAP RING 18	1
24	PUMP CORE	1	50	SAFETY VALVE	1
25	WASHER	1	51	RELIEF VALVE SPRING	1
26	BOLT	2	52	"Y" RING	1
			53	BLEEDER VALVE	1

For information regarding the maintenance and use of this unit call:
1-800-820-7236

PARTS LIST

ITEM NO.	DESCRIPTION	QTY	ITEM NO.	DESCRIPTION	QTY
1	SCREW M10X22	14	25	RAISE ARMS AXIS	1
2	EYE BOLT M8X14	2	26	PULL ROD AXIS	2
3	LINK ROD AXIS	2	27	PULL ROD	2
4	SCREW M8X20	4	28	INNER SEX ANGULAR SCREW	4
5	INNER TIGHTEN WASHER 8	4	29	FRONT CASTER WHEEL	2
6	WASHER 8	2	30	FRAME	2
7	SCREW BUSH 20	2	31	HANDLE BAR	2
8	INNER TIGHTEN WASHER 10	14	32	"C"-RING S16	2
9	REAR WHEEL SET	2	33	LINK ROD	2
10	READ WHEEL SADDLE	2	34	LINK ROD WASHER	2
11	HANDLE BASE SCREW	2	35	SADDLE BASE AXIS (LONG)	1
12	INNER TIGHTEN WASHER 18	4	36	"C"-RING S19	4
13	INNER HEX BLOT	2	37	SADDLE BASE AXIS(SHORT)	1
14	LINKAGE WASHER	2	38	LIFT ARM	1
15	CASE	2	39	SADDLE BASE	1
16	AXIS	1	40	NYLON WASHER	1
17	HANDLE BASE	1	41	SADDLE	1
18	STEPPED-UP RING	2	42	HOLDER AXIS	1
19	SPRING	2	43	RUBBER SADDLE PAD	1
20	HANDLE LOWER	1	44	NUT M8	2
21	EYE BOLT M8X35	1	45	THIN NUT M18	2
22	HEX BOLT M6X12	1	46	WASHER 16	2
23	HANDLE UPPER	1	47	"C"-RING S16	2
24	POWER UNIT ASSY	1	48	SPRING PIN	2

