

NASCAR

Model #550320-HJ
Modelo #550320-HJ
Modèle #550320-HJ

**3 TON GARAGE JACK
OPERATING INSTRUCTIONS AND PARTS MANUAL**

**CRIC DE GARAGE - 3 TONNES
INSTRUCTIONS DE FONCTIONNEMENT ET NOMENCLATURE DE PIÈCES**

**GATO PARA GARAJE DE 3 TONELADAS
INSTRUCCIONES PARA EL FUNCIONAMIENTO Y MANUAL DE PIEZAS**



3 TON GARAGE JACK OPERATING INSTRUCTIONS AND PARTS MANUAL

Meets ANSI/ASME PALD-1993 Safety Standard

Please retain these instructions for future reference.

If you encounter any problems or difficulties please do not return this jack to the store.
Please contact our toll free customer service department at:

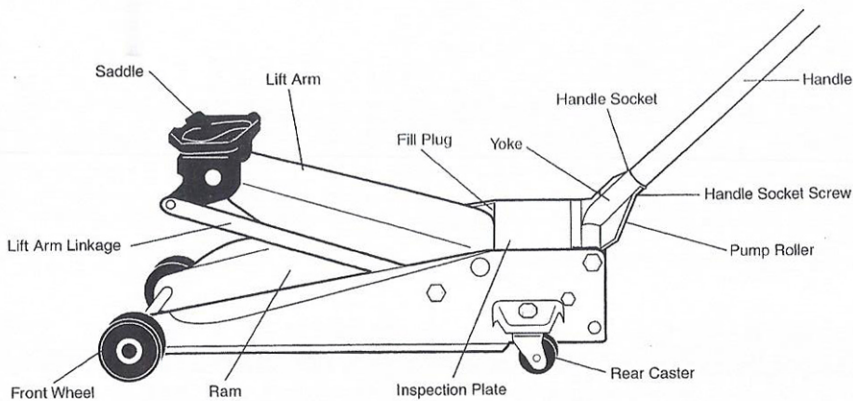
1-800-423-3598

1-310-522-9008 (California only)

1-310-522-9066 Fax

SPECIFICATIONS

Rated Capacity (Safe Working Load)	3 Ton (6000 #) (2727 KG)
Weight	102 # (46 KG)
Lowered Height	4 3/4" (12.1cm)
Maximum Height	19 11/16" (50.0cm)



!!WARNING!!

- THIS IS A LIFTING DEVICE ONLY. IMMEDIATELY AFTER LIFTING, SUPPORT THE VEHICLE WITH JACK STANDS.
- DO NOT MOVE OR DOLLY THE VEHICLE WHILE ON THE JACK.
- DO NOT GET UNDER OR ALLOW ANYONE UNDER THE VEHICLE UNTIL IT HAS BEEN SUPPORTED BY JACK STANDS.
- FAILURE TO HEED THESE WARNINGS MAY RESULT IN PERSONAL INJURY AND/OR PROPERTY DAMAGE.
- READ, STUDY, AND UNDERSTAND ALL WARNINGS AND OPERATING INSTRUCTIONS PRIOR TO USE.
- LIFT ONLY ON AREAS OF THE VEHICLE AS SPECIFIED BY THE VEHICLE MANUFACTURER.
- PLACE LOAD IN THE CENTER OF THE SADDLE ONLY.
- THIS JACK IS DESIGNED FOR USE ONLY ON HARD LEVEL SURFACES CAPABLE OF SUSTAINING THE LOAD. USE ON OTHER THAN HARD LEVEL SURFACES CAN RESULT IN JACK INSTABILITY AND POSSIBLE LOSS OF LOAD.
- NO ALTERATIONS TO THE JACK SHALL BE MADE.

OWNER AND/OR OPERATOR RESPONSIBILITY

It is the owner and/or operators responsibility to read and understand all WARNINGS and operating instructions contained on the product label and instruction manual prior to operation of this unit.

It is also the owner and/or operators responsibility to provide maintenance, maintain all decals or warning labels and in general while in use, maintain the unit in good working order.

If the owner and/or operator is not fluent in English, French or Spanish, the product warnings and instructions shall be read to and discussed with the operator in the operator's native language by the purchaser/owner or his designee, making sure that the operator comprehends its contents.

ASSEMBLY

This jack is completely assembled except for the handle and handle grip. Note the handle has two sections, one upper with screw attached and the lower section.

Remove the screw and slide the lower section into the upper one affixing the two by replacing the screw.

2. Loosen the handle socket screw in the yoke.
3. Apply a small amount of grease to the handle socket.
4. Place the assembled handle into the handle socket.
5. Tighten the handle socket screw.
6. For handle grip assembly, please refer to the back of this manual.

OPERATION

Before use, a visual inspection of the jack should be made looking for bent, worn parts, loose parts, or hydraulic leaks.

Rotate the handle in a clockwise direction to close the release valve and pump the handle. The lift arm should start to rise indicating it is ready for use. If the lift arm fails to rise after the pumping action, consult the section under troubleshooting for steps to remove air from the system.

JACK USE

1. Always set the vehicle parking brake and block the wheels.
2. Turn the handle clockwise to close the release valve. **Do not over tighten!**
3. Consult the vehicle owners manual to ascertain the location of jack points and position the jack beneath the prescribed lift point.
4. Make sure no obstacles are in the path for the jack wheels, as they move during the lift process.
5. Pump the handle and raise the vehicle to the desired height.
6. Place jack stands beneath the vehicle and do not get under the vehicle without jack stands, as jacks are not designed to maintain these heavy loads for long time periods.
7. Turn handle slowly counterclockwise to lower load onto jack stands.

JACK REMOVAL

1. Turn handle clockwise to close the release valve and pump handle enough so the load clears the jack stands.
2. Remove the jack stands, making sure no one gets under the load.
3. Turn handle counterclockwise slowly to allow the vehicle to return to the ground. Do not allow vehicle to lower too fast as this may damage the hydraulic seals.
4. Once lowered, remove the jack from under the vehicle.
5. Lower the lifting arm completely for storage.

MAINTENANCE

Monthly maintenance is recommended.

1. Lubrication is critical to jacks as they support heavy loads and any restriction due to dirt, rust, etc., can cause either slow movement or cause extremely rapid jerks, damaging the internal components. The following steps are those designed to keep the jack well lubed:
 - a. Handle socket should be greased regularly.
 - b. With a grease gun, grease the lift arm pivot pin grease fitting.
 - c. Oil pump piston.
 - d. Oil all linkages attached to the lift arm.
 - e. Oil the front wheels and apply grease to caster bearings.
 - f. Place a small amount of grease on the rolling surface of the pump roller located in the yoke.
 - g. Oil ram piston.

For exterior and interior oiling, use "Hydraulic Jack Oil" only. Use of any other oil may damage the unit.

2. Visual inspection for cracked welds, bent loose, missing parts or hydraulic oil leaks.
3. If jack is subjected to abnormal load or shock, remove from service and have it examined by an Authorized Repair Service.
4. Clean all surfaces and maintain all labels and warnings.

FACTORY SERVICE

Any hydraulic jack found to be damaged in any way, is found to be worn or operates abnormally "SHALL BE REMOVED FROM SERVICE UNTIL REPAIRED". Owners and/or operators should be aware that repair of the equipment requires specialized knowledge and facilities. Only factory authorized parts, labels and decals shall be used on this equipment.

ALTERATIONS

Because of the potential hazards associated with the misuse of equipment of this type, no alterations shall be made to the product without written authorization of the manufacturer or supplier.

CHECKING OIL LEVEL

!!WARNING!!

Always purchase those products labeled "Hydraulic Jack Oil". Do not use brake or transmission fluids, as they can damage seals.

1. Turn handle counterclockwise to allow lift arm to fully retract.
2. Remove inspection plate.
3. Remove fill plug.
4. Lift jack so the cylinder is in the vertical position. Proper oil level should be even with the bottom of the fill hole. If low, fill with NEW clean hydraulic jack oil and recheck level. Do not overfill!
5. Replace filler plug. Replace inspection plate.
6. Check jack operation.

At this time, consult trouble shooting section for air removal procedure to purge air from system.

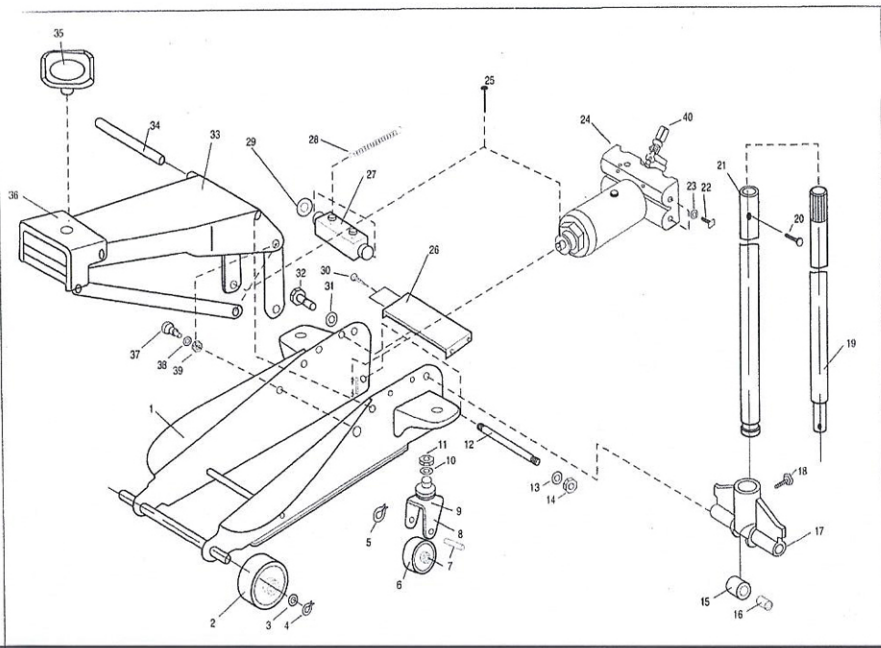
TROUBLE SHOOTING

System Air Purge

1. Turn handle counterclockwise one full turn to open release valve.
2. Pump handle eight full strokes.
3. Turn handle clockwise to close release valve.
4. Pump handle until the lift arm reaches maximum height and continue to pump several times to remove trapped air in the ram.
5. Turn handle counterclockwise one full turn to open release valve and allow lift arm to retract.
6. Turn handle clockwise to close release valve and check for proper pump action. It may be necessary to perform the above more than once to assure air is evacuated totally.

OTHER SYMPTOMS

Jack will not lift to full height:	Low oil level
Jack will not hold load:	Release valve not closing Dirt in hydraulic oil or pump valves not sealing Refer to Air Purge section
Lift arm will not lower:	Broken return spring Lift arm linkage bent or binding Cylinder ram binding Release valve broken Parts worn
Jack feels spongy when lifting:	See Air Purge section



PARTS LIST

1	Main Frame	21	Lower Handle
2	Front Wheel	22	Power Unit Bolt
3	Flat Washer	23	Washer
4	Axle Clip	24	Power Unit
5	Caster Axle Clip	25	Ram Pin
6	Rear Caster	26	Inspection Plate
7	Caster Axle	27	Ram Block
8	Caster Bracket	28	Return Spring
9	Bearing Assembly	29	Linkage Washer
10	Washer	30	Inspection Plate Screws
11	Hex Nut	31	Washer
12	Rear Frame Bolt	32	Yoke Bolt
13	Washer	33	Lifting Arm Assembly
14	Hex Nut	34	Lifting Arm Pin
15	Pump Roller	35	Saddle
16	Pump Roller Axle	36	Saddle Platform
17	Yoke	37	Lifting Arm Linkage Bolt
18	Handle/Yoke Bolt	38	Washer
19	Upper Handle	39	Hex Nut
20	Handle Bolt	40	U-Joint

SURE-GRIP HANDLE

Sure-Grip Handle Application Instructions

1. Peel off protective backing from Sure-Grip adhesive material.
2. Carefully align along end of handle and apply light pressure at beginning edge. Turn handle slowly, guiding the Sure-Grip material onto surface.
3. Continue turning handle until Sure-Grip material completely goes around handle and meets at beginning. If in position you desire, then apply firm pressure to complete bond.

For Customer Service Call: 1-800-423-3598

Instructions pour la pose de la poignée Sure-Grip

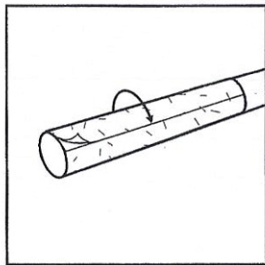
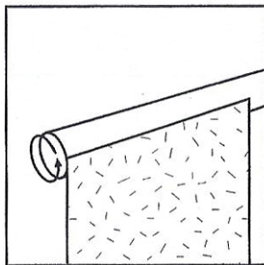
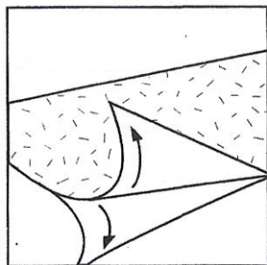
1. Peler la couche protectrice de l'arrière de la feuille adhésive de matériau Sure-Grip.
2. Aligner soigneusement la feuille au bord de l'extrémité du manche, et presser légèrement sur le bord initial. Tourner doucement la poignée, en guidant la feuille Sure-Grip le long de la surface.
3. Continuer à tourner le manche jusqu'à ce que la feuille Sure-Grip enrobe complètement le manche et rejoigne le bord initial. Si celle-ci est dans la position désirée, presser alors fermement pour achever le collage.

Pour le Service Clientèle, composer le 1-800-423-3598

Instrucciones para la aplicación

1. Pele la parte posterior protectora del material adhesivo Sure-Grip.
2. Aline cuidadosamente a lo largo del extremo del mango y aplique una leve presión en el borde donde comience. Haga girar el mango lentamente, guiando al material Sure-Grip sobre la superficie.
3. Continúe haciendo girar el mango hasta que el material Sure-Grip rodee el mango completamente y hasta que se encuentre con el principio. Si se encuentra en la posición que usted desea, entonces aplique presión firme para completar la vuelta.

Para el Servicio para el Consumidor Llame al 1-800-423-3598



FOR CUSTOMER SERVICE
POUR LE SERVICE APRÈS VENTE
OU DU CONSOMMATEUR
PARA EL SERVICIO
PARA EL CONSUMIDOR
1-800-423-3598



ALLTRADE®

1431 Via Plata
Long Beach, CA 90810-1462
©Copyright 1997 Alltrade Inc.