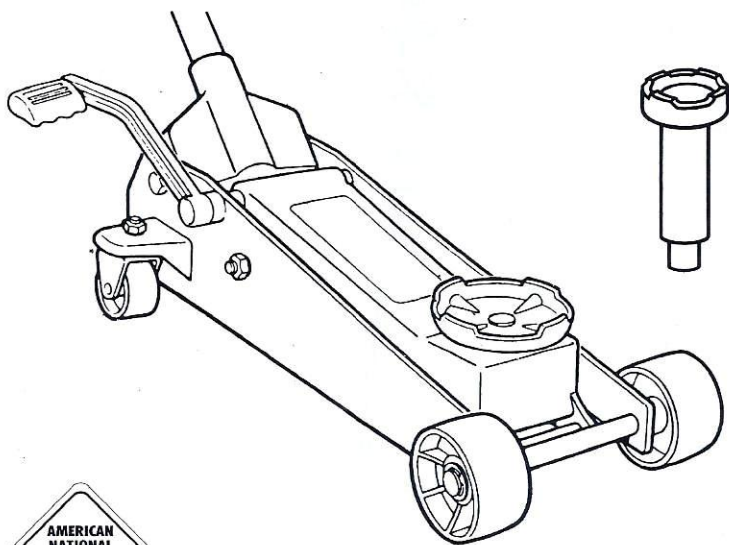




OWNER'S MANUAL

**3 $\frac{1}{2}$ TON CAPACITY
HEAVY DUTY SERVICE JACK
WITH S.U.V. ADAPTER**



Conforms to:
ASME/PALD -1997
An American National Standard

MODEL 45491SUV

OWNER / OPERATOR RESPONSIBILITY

All persons using this product must understand these warnings and operating instructions prior to use. Anyone not fluent in English must be given an understanding of these instructions before using this jack.

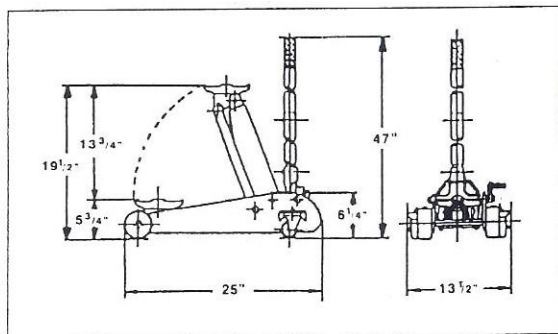
* KEEP THESE INSTRUCTIONS FOR FUTURE REFERENCE.

WARNING

- This jack is designed for lifting purposes only.
- Do not attempt to move or dolly anything while supported by this jack.
- Before lifting, always chock the tires on both sides and set the parking brake to prevent rolling.
- Thoroughly inspect the jack before each use.
- Use only on hard, level surfaces capable of sustaining the load.
- Do not overload, exceeding rated capacity can cause damage to and/or failure of this jack.
- Lift only on areas of a vehicle approved as lifting points by the vehicle manufacturer.
- After lifting, immediately support the vehicle with appropriate capacity vehicle support stands.
- No alterations shall be made to this product.
- Use only Allied adapters and attachments.
- Do not work under a vehicle supported solely by this jack.
- Study, understand, and follow all instructions before using this jack.
- Failure to heed these warnings may result in property damage, personal injury, or death.

SPECIFICATIONS

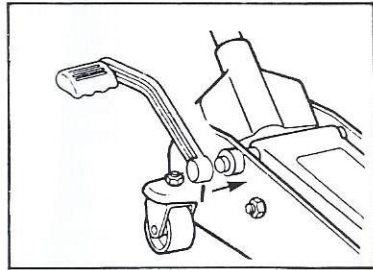
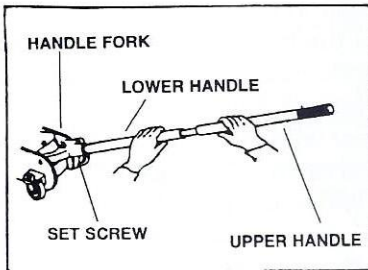
Capacity	3-1/2 Tons	3,175 kg.
Minimum Saddle Height (Standard Saddle)	5-3/4"	14.6 cm.
Maximum Saddle Height (Standard Saddle)	19 - 1/2"	49.5 cm.
Hydraulic Lift	13 - 3/4 "	34.9 cm.
Overall Length	25	63.5 cm.
Overall Height	47	119.4 cm.
Overall Width	13-1/2 "	34.3 cm.
Frame Height	6-1/4"	15.9 cm.
Handle Length	39 - 3/4"	101 cm.
Weight of Jack	86 lbs.	39 kg.
Minimum Saddle Height (S.U.V. Saddle)	9-3/4"
Maximum Saddle Height (S.U.V saddle)	23-1/2"



JACK ASSEMBLY

A) Handle

1. Connect the two-piece handle by lining up the holes and fastening the assembly screw.
2. Insert handle into handle fork, and tighten the handle set screw.



B) Stroke Saver™ Lever

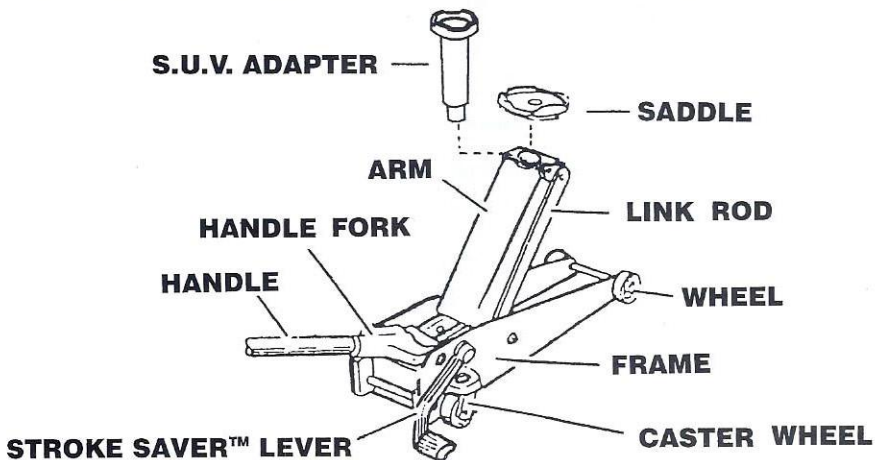
1. Line up the tang in the Stroke Saver™ socket with the notch in the lifting arm pin. Place the socket over the protruding end of the pin and push on until it is snugly seated.
2. Tighten the retaining screw. Check to make sure the lever will rotate on the pin. Your jack is now ready for use.

HOW YOUR JACK WORKS

Your hydraulic garage jack uses hydraulic pressure to raise the arm and saddle.

Hydraulic oil is contained in the reservoir which is part of the jack, and when the jack handle is worked the oil is forced through a valve into a cylinder. The piston inside the cylinder (the 'ram') in turn pushes the connecting rod which lifts the arm.

When the release valve is opened, oil flows out of the cylinder, and back into the reservoir, thus lowering the arm and saddle.



OPERATION

TO LIFT

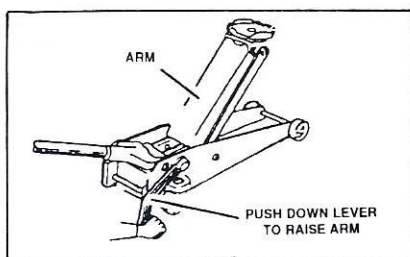
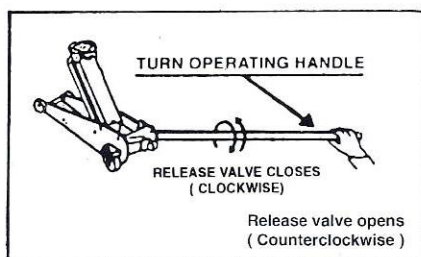
Position the jack under an approved lifting point of the vehicle. (Refer to vehicle owner's manual for the location of approved lifting points) Turn the operating handle to the right (clockwise) until the valve is snugly closed, depress the Stroke Saver™ lever by hand or foot until the saddle comes in contact with the lifting point of the vehicle and hold it there for a second or two. This allows the hydraulic oil to flow into the ram cylinder. **Do not attempt to lift the vehicle with the Stroke Saver™ lever.** You will find that the saddle will settle as much as 2¹/₂". This is intentional, as it allows for final positioning of the jack under the lifting point.



WARNING

ALWAYS CENTER THE LOAD IN THE CENTER OF THE SADDLE.
OFF-CENTER LOADS ARE UNSTABLE AND DANGEROUS.

After your jack is properly positioned under the lifting point, pump the operating handle up and down until the vehicle reaches the desired height. Place vehicle support stands (jack stands) under support points approved as such by the vehicle manufacturer. Slowly turn the operating handle to the left (counterclockwise) to lower the vehicle onto the stands.



TO LOWER

Use the jack to lift the vehicle sufficiently to remove the vehicle support stands as described under "TO LIFT". Remove the support stands.

(DO NOT GET UNDER THE VEHICLE TO REMOVE THE STANDS.)

Use a stick or hook or other suitable device to remove the stands, Make sure no obstructions are left between the vehicle and the ground. Turn the operating handle slowly counterclockwise, lowering the vehicle to the ground.

TROUBLE SHOOTING

TROUBLE	POSSIBLE CAUSE	REMEDY
1. Jack does not lift.	1. Release valve not fully closed. 2. Oil level low. 3. Air in hydraulic system.	1. Fully close release valve. 2. Fill reservoir to proper level. 3. Purge air from system. (see below)
2. Lifts only half way.	1. Oil level low. 2. Air in hydraulic system.	1. Fill reservoir to proper level. 2. Purge air from system. (see below)
3. Lifts but won't hold load.	1. Release valve not fully closed.	1. Fully close release valve.
4. Lifting arm raises when handle is lowered but lowers when handle is raised.	1. Operational valve jammed.	1. Close release valve and raise lifting arm using the Stroke Saver™ lever. When handle is down apply weight to the saddle while raising the handle quickly. This may have to be repeated to unstick the valve.

FOR CUSTOMER ASSISTANCE CALL 1-800-248-6657

NOTE :

- Often during shipment or improper transport or storage air may get into hydraulic system.
To purge air from system follow the steps listed below.
 - Fully open release valve by turning operating handle counterclockwise until it will no longer turn.
 - Apply weight to jack saddle by using your foot or placing a heavy object in middle of saddle.
 - Rapidly pump operating handle up and down 10 - 15 times, this operation may be required several times before all air is purged from system. **Do not use the Stroke Saver™ Lever for this process.**
- It is possible that during shipment, atmospheric pressure changes can cause a slight vacuum to form inside the reservoir, resulting in poor operation.
To remedy the problem, simply remove and reinsert the fill plug to equalize the pressure inside the reservoir. Do this only when the lifting arm is all the way down. Otherwise the reservoir will become pressurized and can spray oil out of the filler hole.

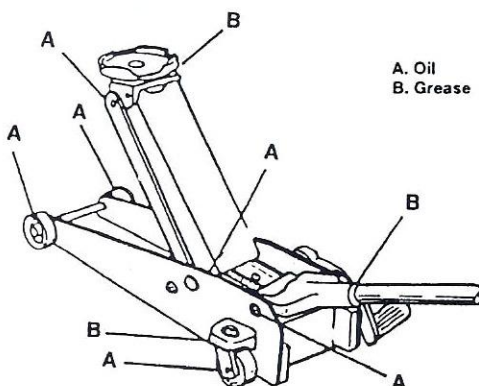
MAINTENANCE

WHEELS AND PIVOTS

Once every month lubricate the wheel axles and all pivot points with SAE 20 oil or an equivalent light machine oil.

Apply grease to the under part of saddle and saddle pin. Also apply grease to the lifting arm spindle.

(Continued Next Page)

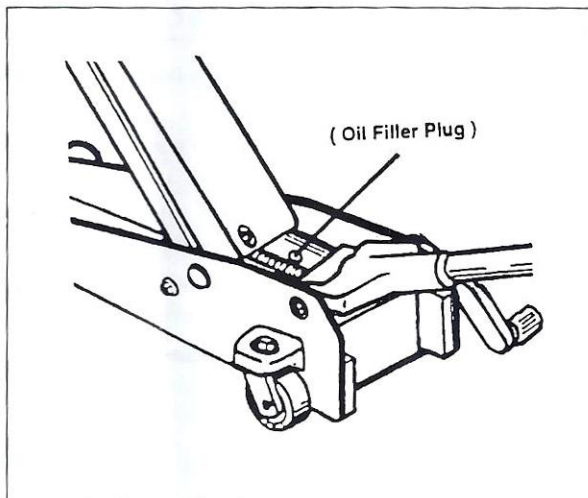


OIL RESERVOIR

The reservoir containing the hydraulic oil is of the sealed type and normally requires no maintenance.

An oil filler hole is provided in case the oil seals deteriorate (after long usage) and must be replaced. When refilling, be sure to use only hydraulic jack oil.

Never use motor oil or brake fluid.



GENERAL CARE OF YOUR JACK

When the jack is not in use, lifting arm and pump lever should be in full down position. This will protect precision machined surfaces of the ram and the piston from corrosion.

Keep your jack clean and well lubricated, with attention given to the outside moving parts such as the lifting arm spindle, castor bearings and lifting arm head pin.

Should any parts be required, please refer to the sectional drawing and quote appropriate part number, model number and date code/serial number of the jack when ordering.

INSPECTION

The jack must be inspected before each use, and must undergo a thorough inspection every 3 months.

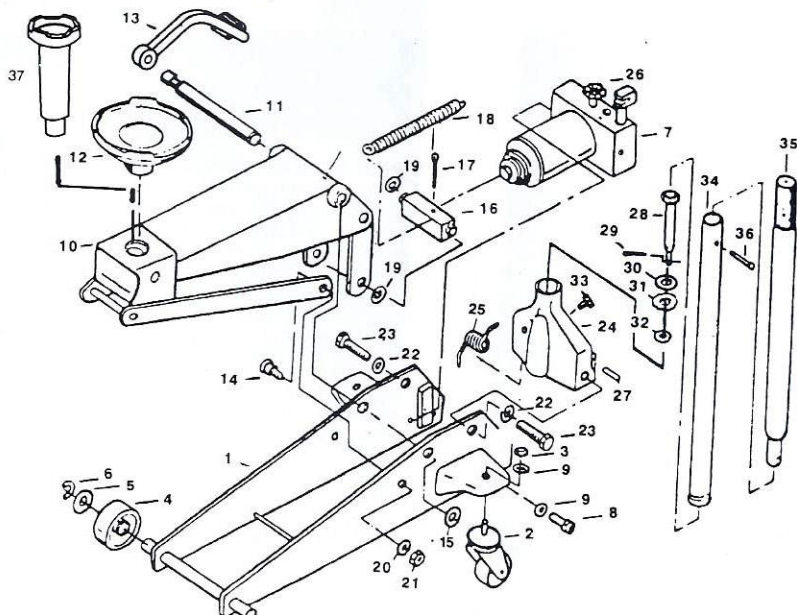
Before each use - Visually inspect the jack for broken or cracked welds, loose, damaged or missing nuts, bolts, pins and other fasteners, and bent, cracked, or otherwise damaged components. If any of the above is found, remove the jack from service.

Every 3 months - Inspect the hydraulic ram and pump piston for signs of corrosion. Inspect the saddle, lifting arm, frame, and all other metal parts for signs of corrosion, leaks, bends, cracked welds, and any signs of other than smooth and proper operation. If any signs of severe corrosion, pitting or other damage are present, immediately remove the jack from service.

If the jack is believed to have been subjected to an abnormal load or shock load, inspect it immediately to determine if it is suitable for service.

REPAIR AND MAINTENANCE

Parts are available as listed in the following drawings. However, it is recommended that any major service be performed by a qualified hydraulics technician.



ITEM NO	DESCRIPTION	QTY.	ITEM NO	DESCRIPTION	QTY.
45491- 01	FRAME	1	45491- 21	NUT	2
45491- 02	REAR CASTER ASSY.	2	45491- 22	SPRING WASHER	2
45491- 03	NUT	2	45491- 23	BOLT, HANDLE FORK	2
45491- 04	FRONT WHEEL	2	45491- 24	HANDLE FORK	1
45491- 05	WASHER	2	45491- 25	TORSION SPRING	1
45491- 06	SNAP RING "E"	1	45491- 26	GEAR RELEASE VALVE	1
45491- 07	HYDRAULIC PWR. UNIT	1	45491- 27	PUMP PISTON PIN	1
45491- 08	BOLT	2	45491- 28	DRIVE ROD,	1
45491- 09	SPRING WASHER	3		RELEASE VALVE	1
45491- 10	LIFTING ARM ASSY.	1	45491- 29	SPLIT PIN	1
45491- 11	SPINDLE, LIFTING ARM	1	45491- 30	WASHER	1
45491- 12	SADDLE	1	45491- 31	GEAR, DRIVE ROD	1
			45491- 32	SPRING WASHER	1
45491- 14	SCREW- RADIUS LINK	2	45491- 33	SET SCREW, HANDLE	1
45491- 15	SNAP-RING "C"	2	45491- 34	HAND LEVER "A"	1
45491- 16	CONNECTING ROD	1	45491- 35	HAND LEVER "B"	1
45491- 17	SPLIT PIN	1	45491- 36	SCREW, HANDLE	1
45491- 18	SPRING	1	45491- 37	S.U.V. ADAPTER	1
45491- 19	SNAP-RING "C"	2			
45491- 20	SPRING WASHER	2			



ONE YEAR LIMITED WARRANTY

Allied warrants this product to the original consumer under intended normal use and may NOT be transferred.

WARRANTY PERIOD. The "IN WARRANTY" period begins from the date of purchase and the product is warrantied as long as you, the original purchaser, own the product. We promise to provide replacement for defective parts. At our option, we will repair or replace with like grade and quality, any product determined by us to be faulty due to material or workmanship. Products or parts which have been abused, altered, misused, or used in rental service DO NOT qualify for replacement.

RETURN POLICY. For warranty service, customer must return product to dealer where purchased, accompanied with the sales receipt for no charge replacement.

***SPECIAL NOTE.** Various retail locations have their own store return policy.

WARRANTY SERVICE. If the product warranty exceeds the length of time that the retail dealer will honor a claim, then return the defective part freight prepaid directly to Allied, together with dated proof of purchase and brief explanation of the problem. Upon receipt and inspection, we will either repair or send at no charge, a replacement prepaid to you.

Allied International, 13207 Bradley Avenue, Sylmar, California 91342 ATTN: PARTS DEPT.