

ALLIED

OWNERS MANUAL

HEAVY DUTY HYDRAULIC SERVICE JACK 3½ TON CAPACITY



Conforms to:
ASME PALDa-2000
An American National Standard

MODEL 45435

OWNER / OPERATOR RESPONSIBILITY

All persons using this product must understand these warnings and operating instructions prior to use. Anyone not fluent in English must be given an understanding of these instructions before using this jack.

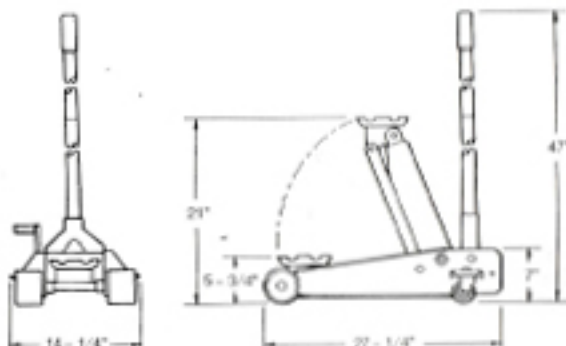
* KEEP THESE INSTRUCTIONS FOR FUTURE REFERENCE.

WARNING

- Study, understand, and follow all instructions before using this jack.
- This jack is designed for lifting purposes only.
- Do not attempt to move or dolly anything while supported by this jack.
- Before lifting, always chock the tires on both sides and set the parking brake to prevent rolling.
- Thoroughly inspect the jack before each use.
- Use only on hard, level surfaces capable of sustaining capacity load.
- Do not overload, exceeding rated capacity can cause damage to and/or failure of this jack.
- Lift only on areas of a vehicle approved as lifting points by the vehicle manufacturer.
- After lifting, immediately support the vehicle with appropriate capacity vehicle support stands.
- No alterations shall be made to this product.
- Use only Allied adapters and attachments.
- Do not work under a vehicle supported solely by this jack.
- Failure to heed these warnings may result in property damage, personal injury, or death.

SPECIFICATIONS

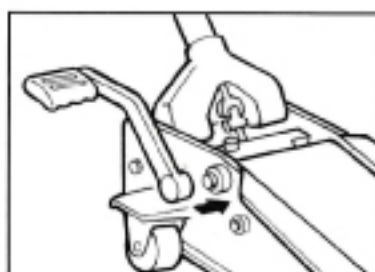
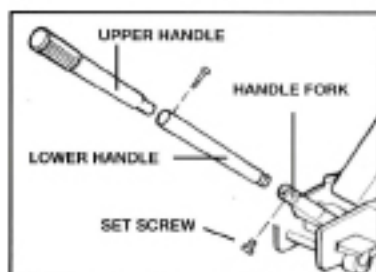
Capacity.....	3 – 1/2 Tons.....	3,175 kg.
Minimum Saddle Height.....	5 – 3/4".....	14.6 cm.
Maximum Saddle Height.....	21".....	53.3 cm.
Hydraulic Lift.....	15 – 1/4".....	38.7 cm.
Overall Length.....	27 – 1/4".....	69.3 cm.
Overall Height.....	47".....	119.5 cm.
Overall Width.....	14 – 1/4".....	36.2 cm.
Frame Height.....	7".....	17.8 cm.
Handle Length.....	40".....	101.6 cm.
Weight of Jack.....	99 lbs.....	44.6 kg.



JACK ASSEMBLY

A) Handle

1. Connect the two-piece handle by lining up the holes and fastening the assembly screw.
2. Insert handle into handle fork, and tighten the handle set screw.

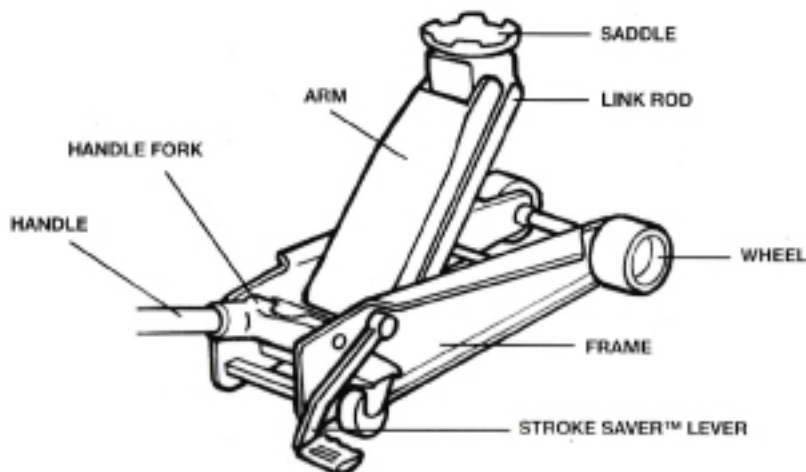


B) Stroke Saver™ Lever

1. Line up the tang in the Stroke Saver™ socket with the notch in the lifting arm pin. Place the socket over the protruding end of the pin and push on until it is snugly seated.
2. Tighten the retaining screw. Check to make sure the lever will rotate on the pin. Your jack is now ready for use.

HOW YOUR JACK WORKS

Your hydraulic garage jack uses hydraulic pressure to raise the arm and saddle. Hydraulic oil is contained in the reservoir which is part of the jack, and when the jack handle is worked the oil is forced through a valve into a cylinder. The piston inside the cylinder ('ram') in turn pushes the connecting rod which lifts the arm. When the release valve is opened, oil flows out of the cylinder, and back into the reservoir, thus lowering the arm and saddle.



OPERATION

TO LIFT

Position the jack under an approved lifting point of the vehicle. (Refer to vehicle owner's manual for the location of approved lifting points) Turn the operating handle to the right (clockwise) until the valve is snugly closed, depress the Stroke Saver™ lever by hand or foot until the saddle comes in contact with the lifting point of the vehicle and hold it there for a second or two. This allows the hydraulic oil to flow into the ram cylinder. **Do not attempt to lift the vehicle with the Stroke Saver™ lever.** After releasing the lever, you will find that the saddle will settle as much as 2½". This is intentional, as it allows for final positioning of the jack under the lifting point.

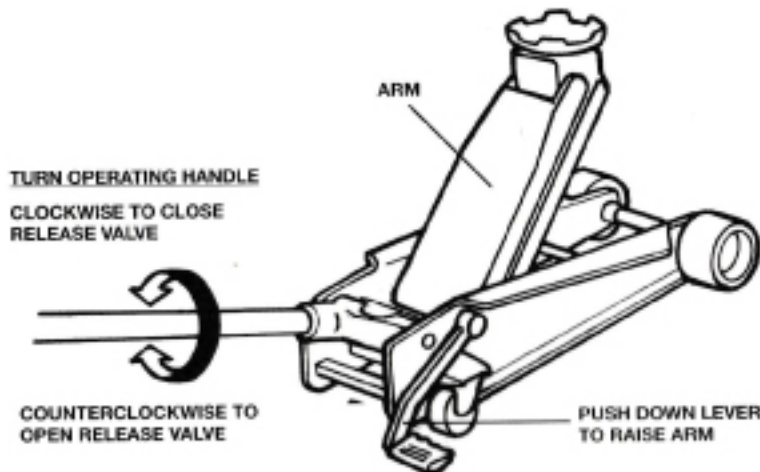


WARNING



**ALWAYS CENTER THE LOAD IN THE CENTER OF THE SADDLE.
OFF-CENTER LOADS ARE UNSTABLE AND DANGEROUS.**

After your jack is properly positioned under the lifting point, pump the operating handle up and down until the vehicle reaches the desired height. Place vehicle support stands (jack stands) under support points approved as such by the vehicle manufacturer. ***SLOWLY** turn the operating handle to the left (counterclockwise) to lower the vehicle onto the stands.



* If the release valve is tightly closed, it can open very quickly when loosened, thus opening the valve too much and beyond the range of lowering control. If the valve is opened too much, the supported load will lower very quickly, almost as quickly as free falling. To avoid this, use extreme caution when opening the release valve. The rate of lowering is controlled within the first 1/4 to 1/2 turn of the release valve being tight.

TO LOWER

Use the jack to lift the vehicle sufficiently to remove the vehicle support stands as described under "TO LIFT". Remove the support stands. **DO NOT GET UNDER THE VEHICLE TO REMOVE STANDS.** Use a stick or hook or other suitable device to remove the stands. Make sure no obstructions are left between the vehicle and the ground. Turn the operating handle SLOWLY counterclockwise, lowering the vehicle to the ground.

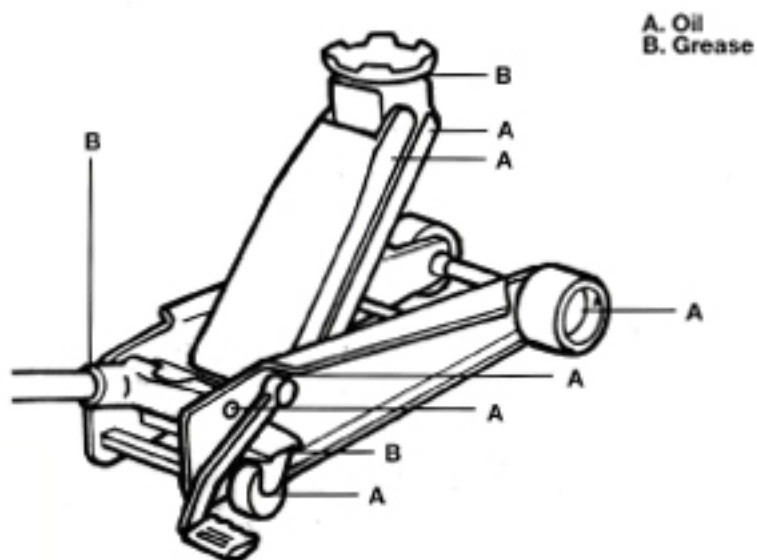
MAINTENANCE

GENERAL CARE OF YOUR JACK

Your jack must be maintained in accordance with these instructions. This is very important in order to maintain smooth and proper operation. When the jack is not in use, lifting arm and pump lever should be in full down position. This will protect precision machined surfaces of the ram and the piston from corrosion. Keep your jack clean and well lubricated, with attention given to the outside moving parts such as the lifting arm spindle, castor bearings and lifting arm head pin. Should any parts be required, please refer to the sectional drawing and quote appropriate part number, model number and date code/ serial number of the jack when ordering.

WHEELS AND PIVOTS

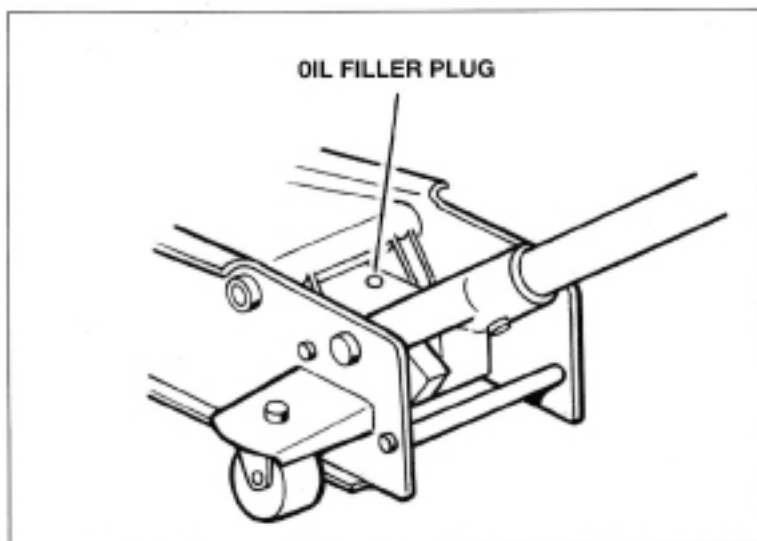
Once every month lubricate the wheel axles and all pivot points including the lifting arm spindle with SAE 20 oil or an equivalent light machine oil. Apply grease to the under part of saddle, saddle pin and castor swivel bearings.



OIL RESERVOIR

The reservoir containing the hydraulic oil is of the sealed type and normally requires no maintenance.

An oil filler hole is provided in case the oil seals deteriorate (after long usage) and must be replaced. When refilling, be sure to use only hydraulic jack oil. Never use motor oil or brake fluid. Fill the jack to within 1/4" of the filler hole. Re-insert the rubber plug only when the handle and lifting arm are all the way down. Otherwise, the reservoir may become pressurized.



INSPECTION

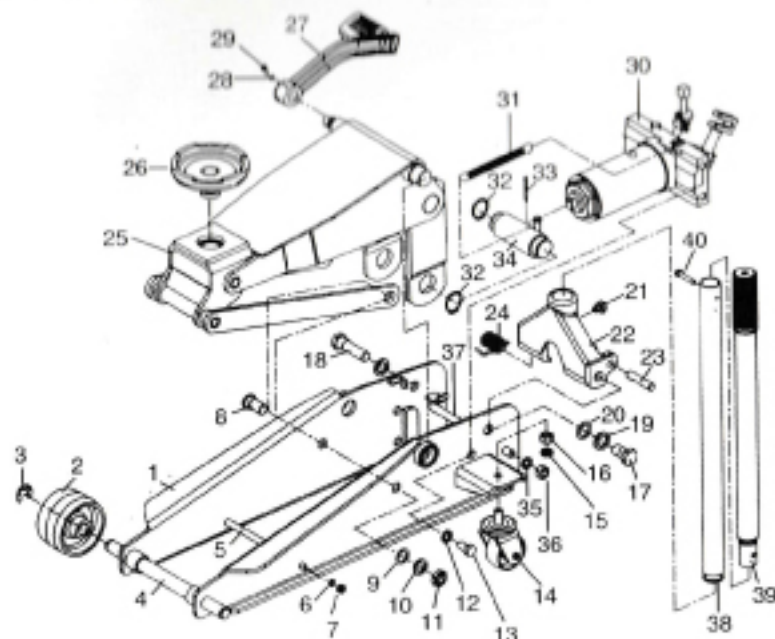
The jack must be inspected before each use, and must undergo a thorough inspection every 3 months.

Before each use - Visually inspect the jack for broken or cracked welds, loose, damaged or missing nuts, bolts, pins and other fasteners, and bent, cracked, or otherwise damaged components. If any of the above is found, remove the jack from service.

Every 3 months - Inspect the hydraulic ram and pump piston for signs of corrosion. Inspect the saddle, lifting arm, frame, and all other metal parts for signs of corrosion, leaks, bends, cracked welds, and any signs of other than smooth and proper operation. If any signs of severe corrosion, pitting or other damage are present, immediately remove the jack from service. If the jack is believed to have been subjected to an abnormal load or shock load, inspect it immediately to determine if it is suitable for service.

REPAIR AND MAINTENANCE

Parts are available as listed in the following drawings. However, it is recommended that any major service be performed by a qualified Hydraulics Technician.



* These Specifications are subject to change without notice

ITEM NO	DESCRIPTION	QTY.	ITEM NO	DESCRIPTION	QTY.
45435 - 01	SIDE PLATE	2	45435 - 21	HANDLE SET SCREW	1
45435 - 02	FRONT WHEEL	2	45435 - 22	HANDLE FORK	1
45435 - 03	"E" - CLIP	2	45435 - 23	PIN, PUMP PISTON DRIVE	1
45435 - 04	FRONT AXLE	1	45435 - 24	TORSION SPRING	1
45435 - 05	FRONT CROSS BAR	1	45435 - 25	LIFTING ARM ASSY.	1
45435 - 06	WASHER	2	45435 - 26	SADDLE	1
45435 - 07	NUT	2	45435 - 27	STROKE SAVER LEVER	1
45435 - 08	SCREW, SIDE LINK	2	45435 - 28	LOCK WASHER	1
45435 - 09	FLAT WASHER	2	45435 - 29	SCREW	1
45435 - 10	LOCK WASHER	2	45435 - 30	HYDRAULIC POWER UNIT	1
45435 - 11	NUT	2	45435 - 31	RETURN SPRING	1
45435 - 12	LOCK WASHER	4	45435 - 32	CIRCLIP	2
45435 - 13	BOLT, POWER UNIT MOUNT	4	45435 - 33	COTTER PIN	1
45435 - 14	SWIVEL CASTER ASSY.	2	45435 - 34	CONNECTING ROD	1
45435 - 15	LOCK WASHER	2	45435 - 35	LOCK WASHER	2
45435 - 16	NUT	2	45435 - 36	NUT	2
45435 - 17	SCREW, HANDLE FORK PIVOT	1	45435 - 37	REAR CROSS BAR	1
45435 - 18	SCREW, HANDLE FORK PIVOT	1	45435 - 38	LOWER HANDLE	1
45435 - 19	LOCK WASHER	2	45435 - 39	UPPER HANDLE	1
45435 - 20	FLAT WASHER	2	45435 - 40	HANDLE SCREW	1