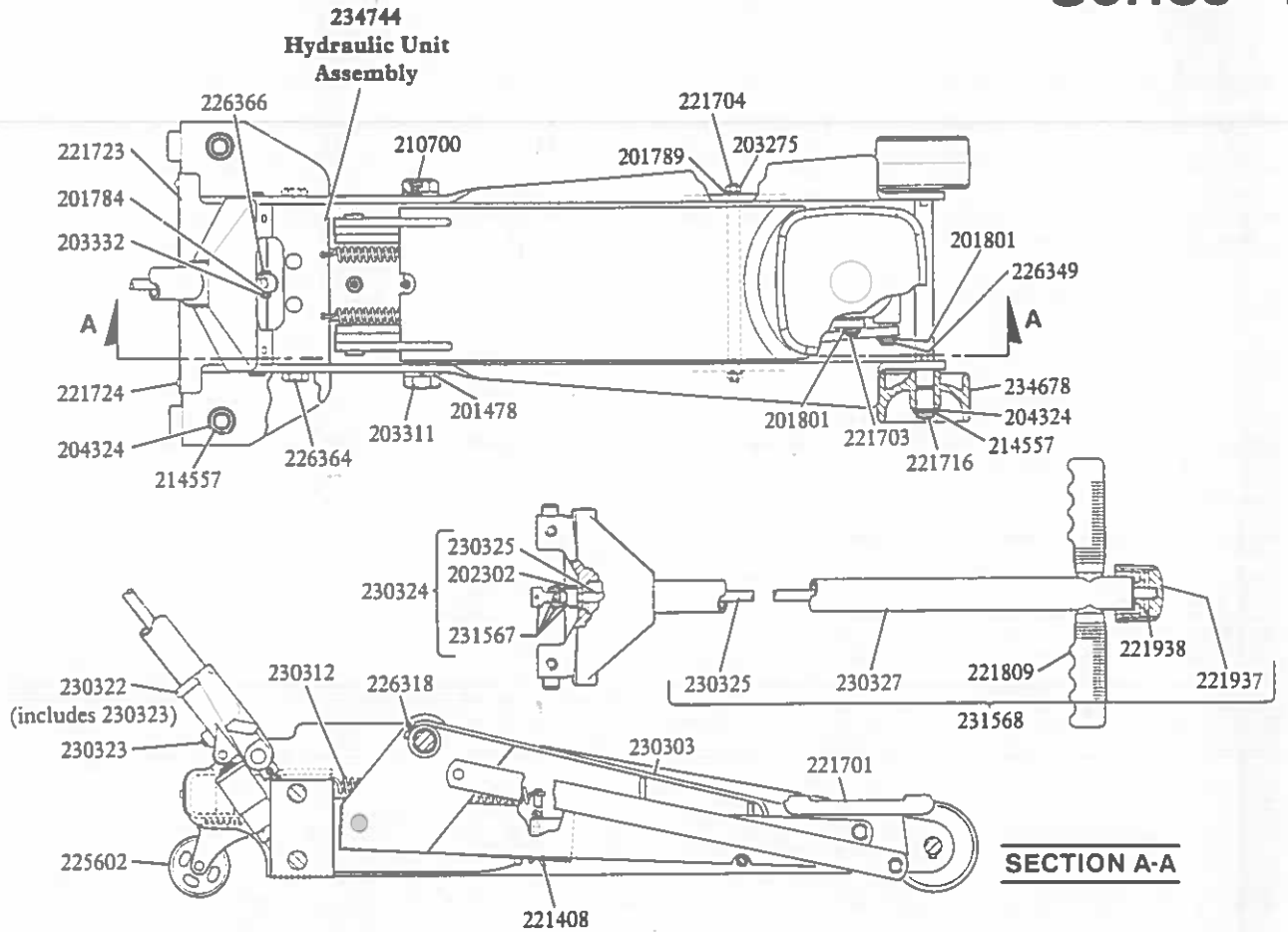


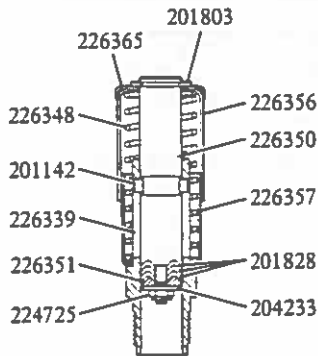
HYDRAULIC SERVICE JACK

2 TON CAPACITY

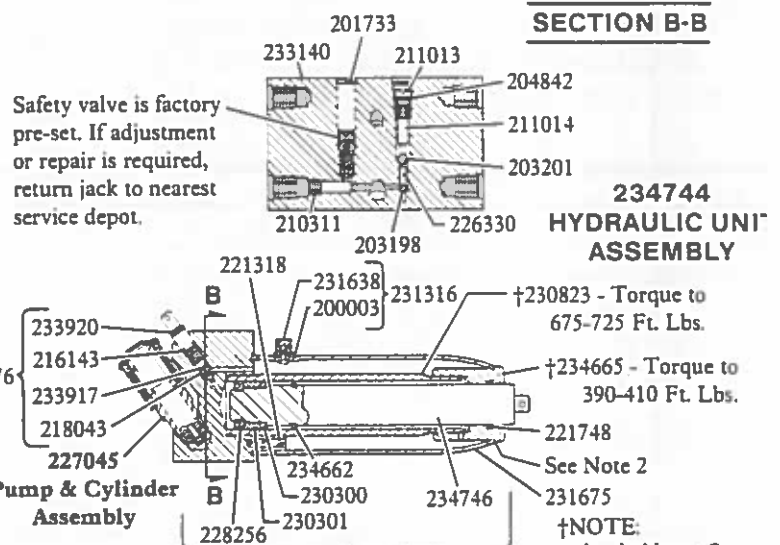
Models 91-652
93652, YA-652
Series "D"



MODEL	LABEL KIT NO.	REPAIR KIT NO.
91-652	240189	91-417
93652	240170	240524
YA-652	240171	240524



**227045
PUMP & CYLINDER
ASSEMBLY**



NOTE 2:
Apply Never-Seez or comparable lubricant to end of tank before tightening tank nut.

†NOTE:
Apply Never-Seez or comparable lubricant to threads before tightening.

TROUBLESHOOTING

PROBLEM	SOLUTION
1) Oil leaking thru filler plug.	The reservoir could be overfilled - The filler plug is designed with an automatic ventilator valve which allows excessive air or oil to escape from the hydraulic system.
1) Will not lift load. 2) Will not lift full height. 3) Pump feels "spongy" under load.	The jack could be low on oil - Remove the filler plug and fill reservoir with clean Hydraulic Jack Oil. The jack could be air bound - Open the release valve one full turn and pump the handle vigorously. Close the release valve and operate.
1) Release knob difficult to turn. 2) Lifting arm will not retract properly.	The jack might need lubrication - Lubricate pump roller and universal joint with grease or heavy oil. With jack in lowest position, grease the fulcrum pin of the lifting arm through the fitting provided. Raise the jack to its highest position and grease the fulcrum pin again. Lubricate (with a heavy oil) the moving joints accessible with jack in this position.
1) Handle raises under load. 2) Handle lowers under load. 3) Will not lift load. 4) Will not hold load.	The valves might not be closing - Lower the lifting arm and close the release valve. Place one foot on a front wheel and raise the lifting arm to its full height by hand. Open the release valve to lower the lifting arm. The jack should now operate properly.

If the above procedures do not correct the problem, contact your nearest service depot. When submitting any jack or equipment to be repaired, be sure to state the nature of the problem and indicate whether an estimate of the repair cost is needed.

IMPORTANT: As with any hydraulic unit, this unit may occasionally become "air bound" due to being tipped over during shipment. To purge the air from the oil lines, open the release and pump rapidly a few strokes. Close release and pump to full height, then open the release to allow the ram to descend rapidly. If the pump still seems "spongy", repeat the procedure.

Low Pickup Height	High Lifting Point	Power Raise	Cap Size (Dia.)	Handle Length	Chassis Length	Chassis Height (Max.)	Front Wheel (Dia.)	Caster Wheel (Dia.)
3-3/4"	24"	20-1/4"	6-1/8"	50"	32-3/4"	7-1/4"	3-3/4"	2-1/2"

SERVICE PARTS

PART	QUAN.	DESCRIPTION	PART	QUAN.	DESCRIPTION	PART	QUAN.	DESCRIPTION
200003	1	Gasket	221408	1	Cotter pin	*228256	1	U-cup packing
201142	1	Cross pin	221701	1	Cap housing	230300	1	Washer
201478	2	Lockwasher	221703	1	Pin	*230301	1	Heel plate
201733	2	Expansion plug	221704	1	Spacer pin	230303	1	Bell crank ass'y.
201784	1	Lockwasher	221716	1	Axle	230312	2	Spring
201789	2	Lockwasher	221723	1	Shroud	230322	1	Handle socket ass'y.
201801	4	Retaining ring	221724	2	Drive screw	230323	1	Set screw
201803	1	Retaining ring	*221748	1	Quad ring	230324	1	Rod & universal ass'y.
*201828	3	V-packing	221809	2	Handle grip	230325	1	Turning knob rod
202302	1	Rivet	221937	1	Release knob	230327	1	Handle
*203198	1	Ball	221938	1	Roll pin	230823	1	Ram cylinder
*203201	1	Ball	224725	1	Nut	231316	1	Plug & gasket ass'y.
203275	2	Nut	225602	2	Caster	231567	1	Universal assembly
203311	2	Nut	226318	1	Grease fitting	231568	1	Handle ass'y.
203332	1	Nut	226330	1	Spacer	231638	1	Filler plug & vent ass'y.
204233	1	Washer	226339	1	Pump cylinder	231675	1	Oil tank
204324	4	Washer	226348	1	Spring	233140	1	Unit block
*204842	1	Gasket	226349	1	Pin	233376	1	Release stem ass'y.
210311	1	Pipe plug	226350	1	Pump piston	233917	1	Plastic spring
210700	1	Fulcrum pin	*226351	1	Adapter	233920	1	Release stem
211013	1	Pressure plug	226356	1	Pump sleeve (top)	234662	1	Up-stop ring
211014	1	Spacer	226357	1	Pump sleeve (bottom)	234665	1	Tank nut
214557	4	Retaining ring	226364	4	Shoulder bolt	234678	2	Front wheel
*216143	1	O-ring	226365	1	Pump sleeve cover	234744	1	Hydraulic unit ass'y.
218043	1	Release valve	226366	1	Bolt	234745	1	Ram assembly
221318	1	Screen	227045	1	Pump assembly	234746	1	Ram

*Included in 91-417 & 240524 Repair Kits.