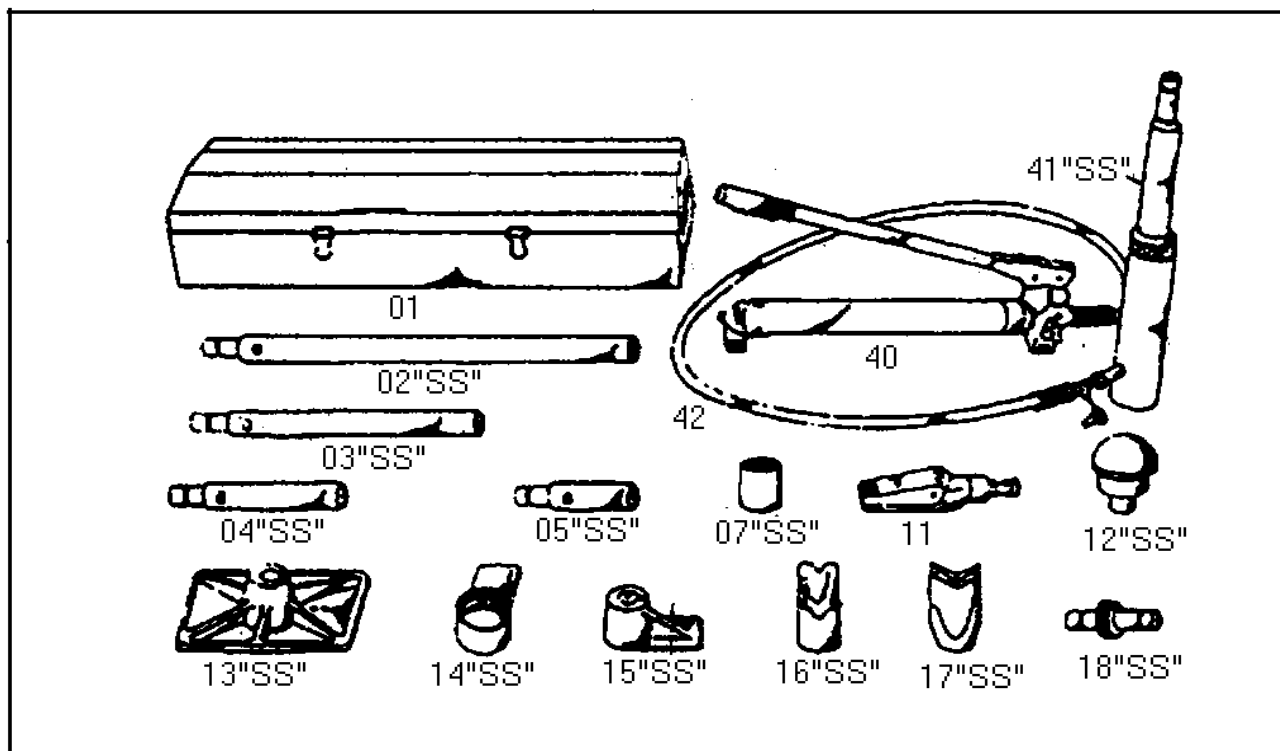




MODEL 815/815C - 10 TON BODY & FRAME KIT

update 11-05



PART ORDER NUMBER	KIT DESCRIPTION	KIT INCLUDES	
		REF.#	DESCRIPTION
815K01	CASE	01	METAL STORAGE CASE
815CK01	CASE	01	PLASTIC STORAGE CASE WITH WHEELS
815K02	EXTENSION	02	24" EXTENSION
815K03	"	03	21" EXTENSION
815K04	"	04	10" EXTENSION
815K05	"	05	5" EXTENSION
804-11	RAM	11	1/2 TON SPREADER RAM
815K12	HEAD	12	RUBBER HEAD "SS"
815K13	BASE	13	FLAT BASE "SS"
815K14	TOE	14	SPREADER RAM TOE
815K15	TOE	15	PLUNGER TOE "SS"
815K16	HEAD	16	WEDGE HEAD "SS"
815K17	BASE	17	V-BASE "SS"
815K18	CONNECTOR	18	CONNECTOR "SS"
815K32	HANDLE	32	HANDLE WITH GRIP
815K07	SADDLE	07	SERRATED SADDLE
815-40	PUMP	40	PUMP 10 ton HYDRAULIC
815-41	RAM	41	RAM 10ton
815KRK	KIT		RESEAL KIT
814K42	HOSE	42	6' HOSE
4KR20	1/2 COUPLER		RAM ONE HALF COUPLER
4KR22	COUPLER		COMPLETE COUPLER

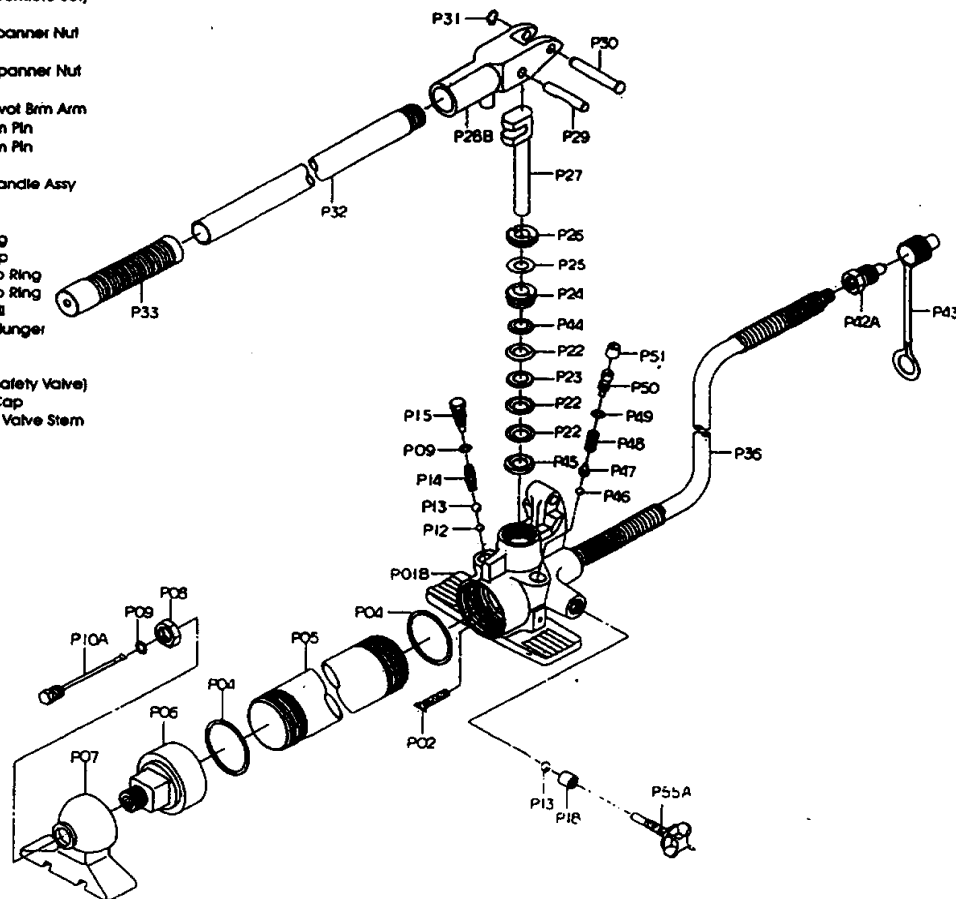
*** ONLY PARTS WITH A "PART ORDER NUMBER" ARE AVAILABLE FOR SALE.**

DO NOT COPY OR DISTRIBUTE THIS MATERIAL WITHOUT PERMISSION OF AFF, INC.



Part no.	Nomenclature
1	1
2	2
3	3
4	4
5	5
6	6
7	7
8	8
9	9
10	10
11	11
12	12
13	13
14	14
15	15
16	16
17	17
18	18
19	19
20	20
21	21
22	22
23	23
24	24
25	25
26	26
27	27
28	28
29	29
30	30
31	31
32	32
33	33
34	34
35	35
36	36
37	37
38	38
39	39
40	40
41	41
42	42
43	43
44	44
45	45
46	46
47	47
48	48
49	49
50	50
51	51
52	52
53	53
54	54
55	55
56	56
57	57
58	58
59	59
60	60
61	61
62	62
63	63
64	64
65	65
66	66
67	67
68	68
69	69
70	70
71	71
72	72
73	73
74	74
75	75
76	76
77	77
78	78
79	79
80	80
81	81
82	82
83	83
84	84
85	85
86	86
87	87
88	88
89	89
90	90
91	91
92	92
93	93
94	94
95	95
96	96
97	97
98	98
99	99
100	100

- ## HYDRAULIC BODY& FRAME PUMP 10 TON CAPACITY



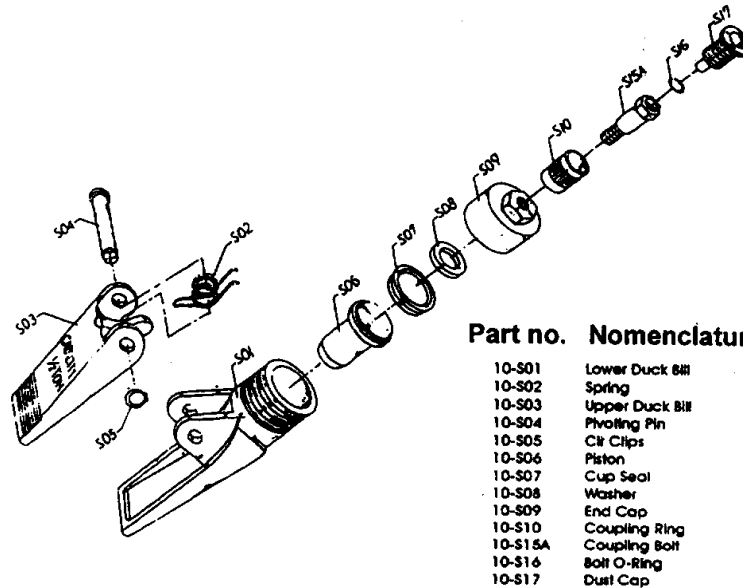
*** ONLY PARTS WITH A "PART ORDER NUMBER" ARE AVAILABLE FOR SALE.**
DO NOT COPY OR DISTRIBUTE THIS MATERIAL WITHOUT PERMISSION OF AFF, INC.



MODEL 815/815C - 10 TON BODY & FRAME KIT

PARTS ON THIS PAGE NOT AVAILABLE SEPARATELY

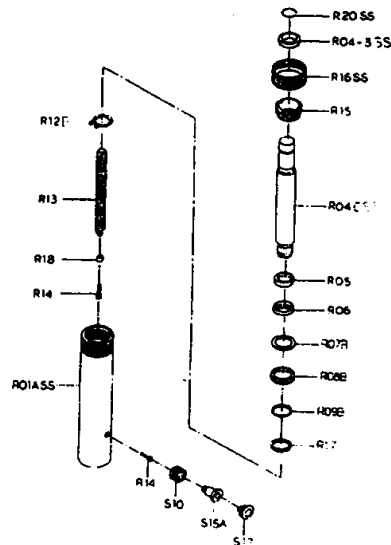
Hydraulic Spreader Assembly 1/2Ton Capacity



Hydraulic Ram Assembly 10 -Ton Capacity

Part no. Nomenclature

10-R01ASS	Cylinder
10-R04CSS	Ram
10-R04-3SS	Bearing
10-R05	Bearing
10-R06	Bushing
10-R07B	Cap Ferrule (C2600p)
10-R08B	Cap (Uetan)
10-R09B	Cap (SS400)
10-R10	Spreader
10-R11	Washer
10-R12B	Snap-Ring "C"
10-R13	Spring
10-R14	Screw
10-R15	Ring
10-R16SS	Protecting Cap
10-R17	Ram Packing ring
10-R18	Bushing
10-S20SS	Ring "c"
10-S10	Coupling Ring
10-S15A	Coupling Ring
10-S17	Dust Cap



*** ONLY PARTS WITH A "PART ORDER NUMBER" ARE AVAILABLE FOR SALE.**
DO NOT COPY OR DISTRIBUTE THIS MATERIAL WITHOUT PERMISSION OF AFF, INC.