

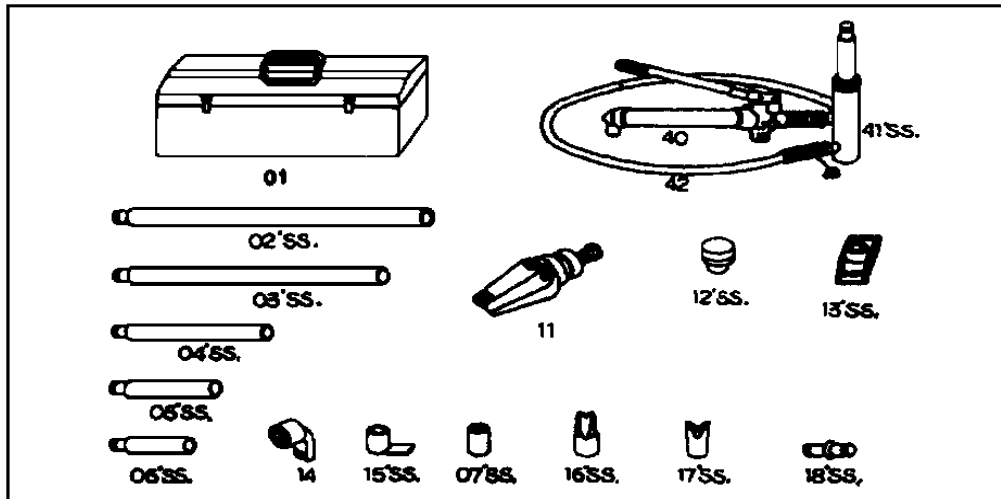


AMERICAN FORGE & FOUNDRY ~ "SS" BODY / FRAME REPAIR EQUIPMENT

**Model
4 Ton Cap**

MODEL 814 HIGH POWERED 4 TON SET

NEW 4 TON STANDARD SET featuring "SS" tubing and attachments requires no more threading, twisting or locking. Just push on the tubing and attachments and you're ready to go. Fast and easy to handle. Make set up a snap.



CAUTION - IMPORTANT

- * Follow all instructions and warnings in operating
- * Retain this manual for future reference and use.

PART ORDER NUMBER	KIT DESCRIPTION	KIT INCLUDES		UPDATE 9/05
		REF.#	DESCRIPTION	
814K01	CASE	01	METAL STORAGE CASE	
814CK01	CASE	01	PLASTIC STORAGE CASE	
814K02	EXTENSION	02	24" EXTENSION	
814K03	"	03	21" EXTENSION	
814K04	"	04	10" EXTENSION	
814K05	"	05	5" EXTENSION	
804-11	RAM	11	1/2 TON SPREADER RAM	
814K12	HEAD	12	RUBBER HEAD "SS"	
814K13	BASE	13	FLAT BASE "SS"	
814K14	TOE	14	SPREADER RAM TOE	
814K15	TOE	15	PLUNGER TOE "SS"	
815416	HEAD	16	WEDGE HEAD "SS"	
814K17	BASE	17	V-BASE "SS"	
814K18	CONNECTOR	18	CONNECTOR "SS"	
814K32	HANDLE	32	HANDLE WITH GRIP	
814K07	SADDLE	07	SERRATED SADDLE	
814-40	PUMP	40	PUMP 10 ton HYDRAULIC	
814-41	RAM	41	RAM 10ton	
814RK	KIT		RESEAL KIT	
814K42	HOSE	42	6' HOSE	
4KR20	1/2 COUPLER		RAM ONE HALF COUPLER	
4KR22	COUPLER		COMPLETE COUPLER	

PRICING SUBJECT TO CHANGE WITHOUT NOTICE

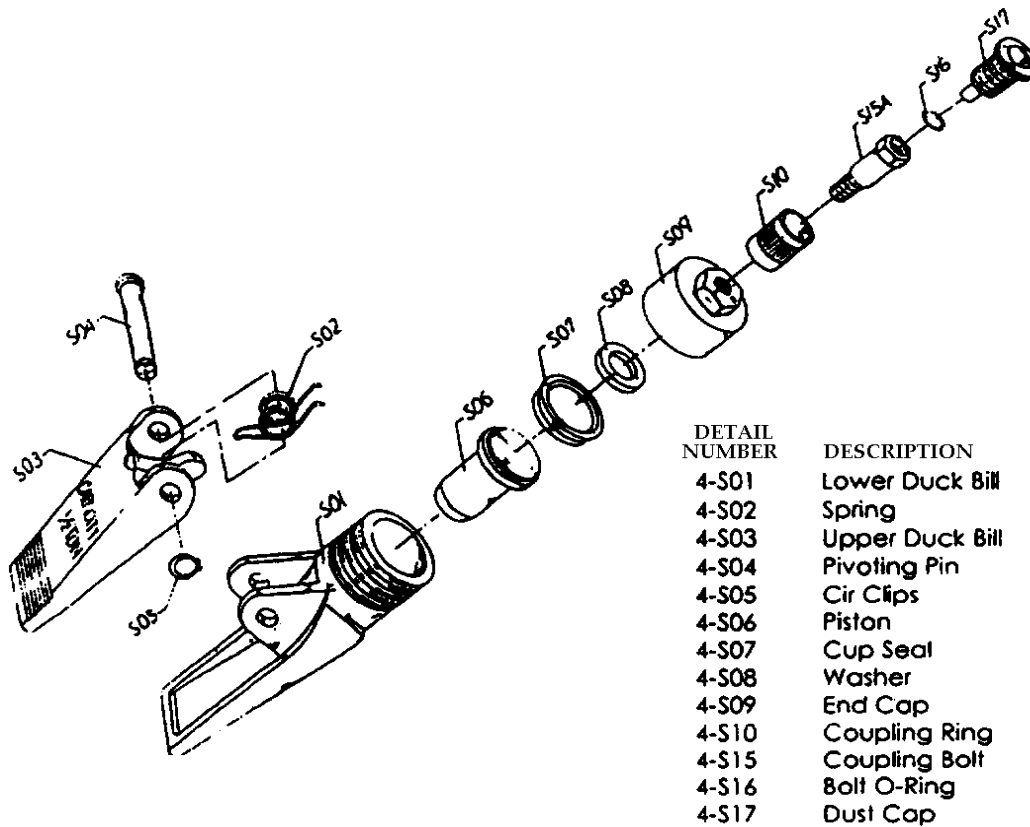
*** ONLY PARTS WITH A "PART ORDER NUMBER" ARE AVAILABLE FOR SALE.**

DO NOT COPY OR DISTRIBUTE THIS MATERIAL WITHOUT PERMISSION OF AFF, INC.

DETAIL NUMBER	DESCRIPTION
4-P01	Pump Housing
4-P02	Filter
4-P04	Seal
4-P05	Pump Reservoir
4-P06	Reservoir End Cap
4-P07	Pump Foot
4-P08	Nut-Housing
4-P09	O-Ring
4-P10	Dip Stick (Oil Level CK)
4-P12	Ball Valve
4-P13	Ball Valve
4-P14	Spring
4-P15	Overload Stem
4-P18	Spacer
4-P22	Seals (Complete Set)
4-P23	Seal
4-P24	Lower Spanner Nut
4-P25	Seal
4-P26	Upper Spanner Nut
4-P27	Plunger
4-P28	Pump Pivot Brm Arm
4-P29	Pivot Arm Pin
4-P30	Pivot Arm Pin
4-P31	Clk Clip
4-P32	Pump Handle Assy
4-P33	Grip
4-P36	Hose
4-P42	Coupling
4-P43	Dust Cap
4-P44	Black-up Ring
4-P45	Black-up Ring
4-P46	Steel Ball
4-P47	Spring Plunger
4-P48	Spring
4-P49	O-Ring
4-P50	Screw (Safety Valve)
4-P51	Plastic Cap
4-P55A	Release Valve Stem

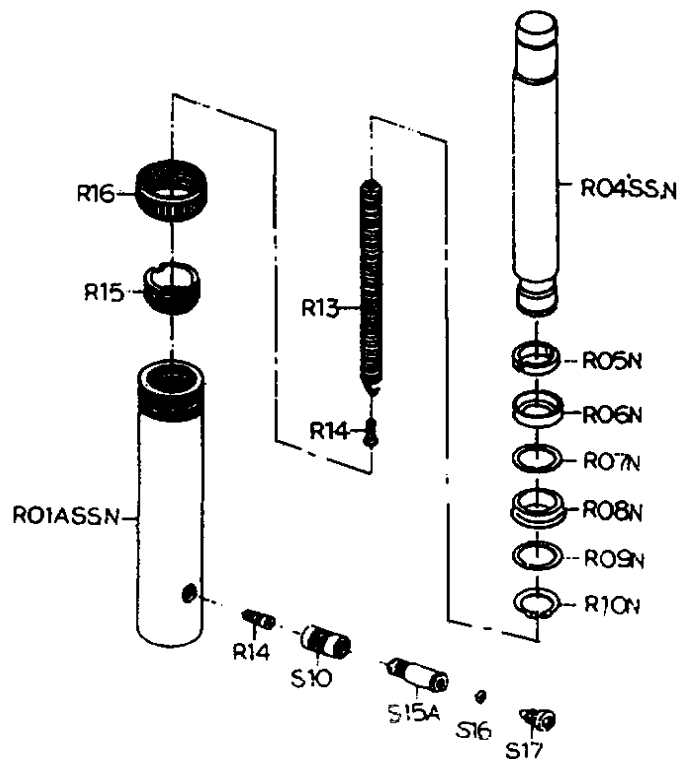


Hydraulic Spreader Assembly 1/2Ton Capacity



Hydraulic Ram Assembly 4-Ton Capacity

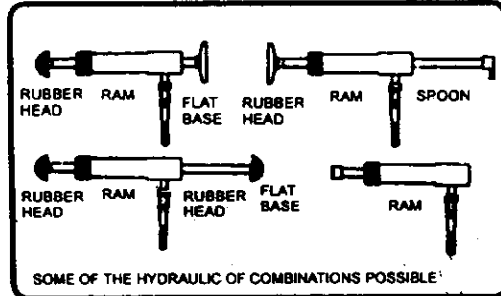
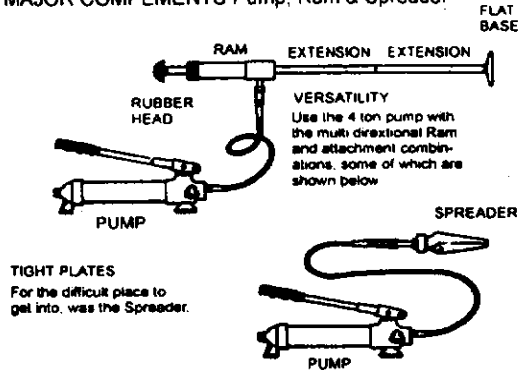
DETAIL NUMBER	DESCRIPTION
4-R01A"SS"N	Cylinder
4-R04"SS"N	Ram
4-R05N	Bearing
4-R06N	Bushing
4-R07N	Back-up Ring
4-R08N	"U" Seal
4-R09N	Washer
4-R10N	Cir Clip
4-R13	Spring
4-R14	Screw
4-R15	Ring
4-R16	Protector
4-S10	Coupling Ring
4-S15	Coupling Bolt
4-S16	Bolt O-Ring
4-S17	Dust Cap



*** ONLY PARTS WITH A "PART ORDER NUMBER" ARE AVAILABLE FOR SALE.**
DO NOT COPY OR DISTRIBUTE THIS MATERIAL WITHOUT PERMISSION OF AFF, INC.

Hydraulic Body & Frame Repair Equipment

MAJOR COMPEMENTS Pump, Ram & Spreader



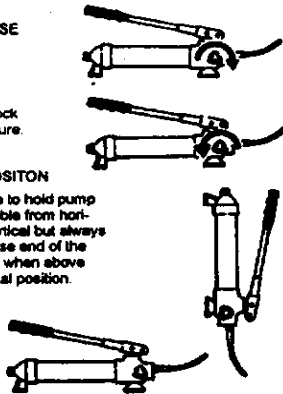
HOW TO OPERATE

RELEASE VALVE
Turn knob **CLOCKWISE** and pump handle for applying pressure

Turn knob counter-clockwise to release pressure.

PUMP POSITION

It is possible to hold pump in any position from horizontal to vertical but always keep the hose end of the pump down when above the horizontal position.



RAM LOAD

Never lift a load that exceeds the capacity of the ram. Do not over extend the ram, because it is possible to force the plunger out of the top of the ram.

DUST CAPS

When coupler valves are disconnected screw in dust cap to keep the oil line clean.

OFF-CENTER LOADS

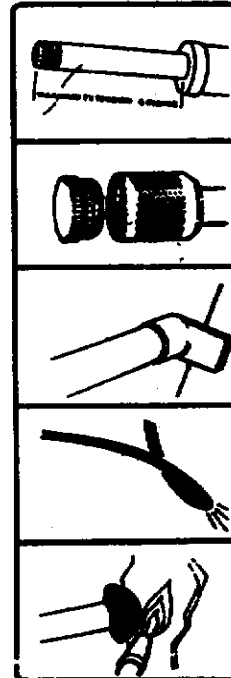
Be careful when load is not centered on ram plunger. Pump carefully - IF YOU FEEL THAT YOU HAVE TO PUMP UNUSUALLY HARD-STOP OPERATION. Adjust set-up to the off center load is not so great.

PROTECT YOUR HOSE

Do not drag heavy objects on your hose and avoid sharp kinks. Provide proper clear once to avoid damage to the hose and couplers.

HEAT AND FIRE

Always keep your equipment away from excessive heat or fire. Heat always weakens the equipment.



SAFETY PRE-CAUTIONS

OIL LEVEL

Collapse ram if connected to pump. Place Pump in an upright position as shown. Remove filter plug and add hydraulic oil until it is level with the full mark on the stem.



DO NOT COPY OR DISTRIBUTE THIS MATERIAL WITHOUT PERMISSION OF AFF, INC.