

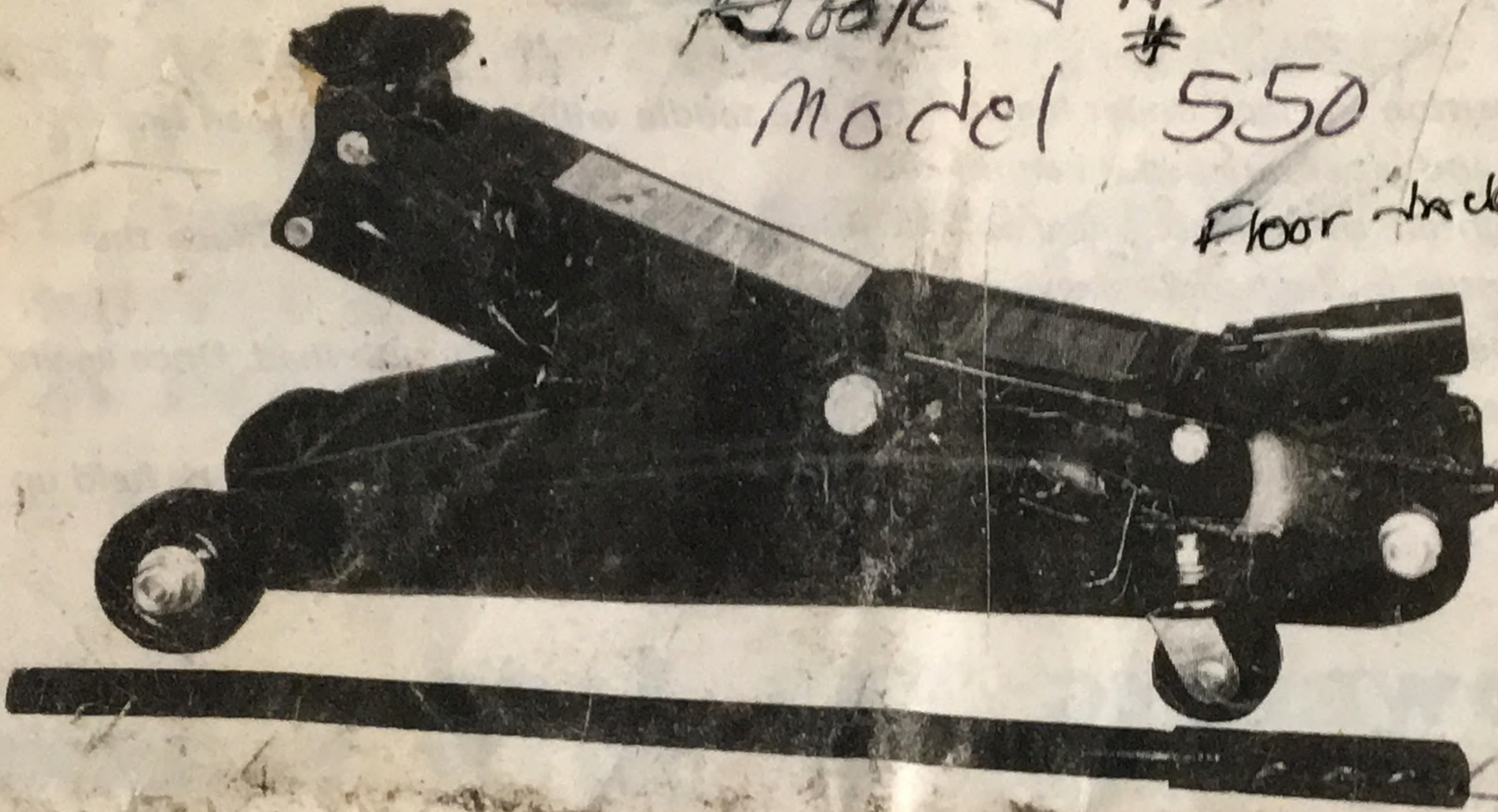
562-596-5477 *menner Forge Foundry*

Intermarket

OWNER'S MANUAL

*Floor Jack AFF
Model # 550*

Floor Jack 2Ton



4400LBS (2000 KGS)

HYDRAULIC

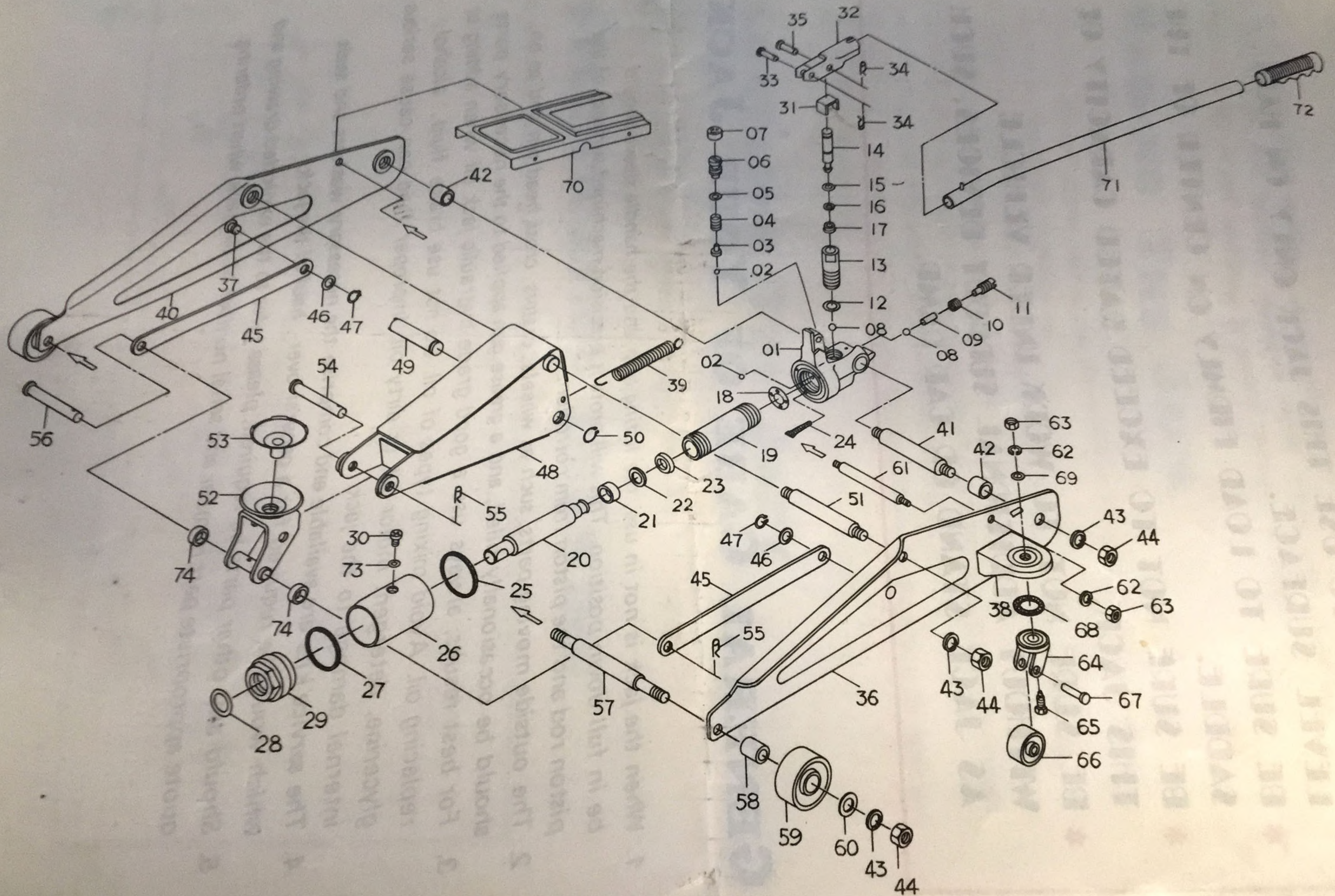
HERCNow.com

TROLLEY JACK

562-596-5477

**FAMILIARIZE YOURSELF THOROUGHLY WITH
THIS MANUAL BEFORE USE TO PREVENT
DAMAGE TO JACK AND PROPERTY OR
PERSONAL INJURY.**

EXPLODED DRAWING



PART'S LIST

ITEM NO	DESCRIPTION	Q'TY	ITEM NO	DESCRIPTION	Q'TY	ITEM NO	DESCRIPTION	Q'TY
01	BASE	1	26	RESERVOIR	1	51	SPINDLE, LIFTING ARM	1
02	STEEL BALL	2	27	PACKING	1	52	SADDLE BASE	1
03	SPRING PLUNGER	1	28	"O,, - RING	1	53	SADDLE	1
04	SPRING, SAFETY VALVE	1	29	TOP NUT	1	54	PIN, LIFTING ARM	1
05	"O - RING "	1	30	AIR VENT VALVE	1	55	SNAP PIN	2
06	SCREW, SAFETY VALVE	1	31	CLAMP, PUMP PISTON	1	56	PIN, LINK	1
07	PLASTIC CAP SAFETY VALVE	1	32	HANDLE SLEEVE	1	57	FRONT SPINDLE	1
08	STEEL BALL	2	33	PIN	1	58	BUSHING	2
09	DISTANCE PIN	1	34	SNAP PIN	2	59	FRONT WHEEL	2
10	SEAL	1	35	PIN	1	60	WASHER	2
11	RELEASE VALVE	1	36	FRAME L.H	1	61	FRAME AUXILIARY SPINDLE	1
12	WASHER	1	37	STUD, SIDE LINK	2	62	SPRING WASHER	4
13	PUMP CYLINDER	1	38	CASTOR BRACKET	2	63	NUT	4
14	PUMP PISTON	1	39	RETURN SPRING	1	64	FORK CASTER	2
15	"O,, - RING ✓	1	40	FRAME R.H	1	65	BOLT	2
16	BACK-UP RING ✓	1	41	SPINDLE BASE	1	66	REAR CASTER	2
17	"U,, SEAL ✓	1	42	SPACING, COLLAR	2	67	SHAFT, REAR CASTER	2
18	COPPER WASHER	1	43	SPRING WASHER	6	68	BALL BEARING	
19	CYLINDER	1	44	NUT	6	69	WASHER	2
20	RAM	1	45	LINK	2	70	COVER	1
21	RAM BUSHING	1	46	WASHER	2	71	HANDLE	1
22	BACK-UP RING	1	47	SNAP-RING 'C,,	2	72	GRIP	1
23	"U,, SEAL	1	48	LIFTING ARM ASSY	1	73	"O,, - RING	1
24	FILTER	1	49	CONNECTING ROD	1	74	SPACER	2
25	PACKING	1	50	SNAP-RING "C,,	1			

SHOULD ANY PARTS BE REQUIRED PLEASE REFER TO THE PARTS DRAWING AND QUOTE APPROPRIATE ITEM NUMBER AND SERIAL NUMBER OF THE JACK WHEN ORDERING