



MODEL 535A - 35 TON AIR/HYDRAULIC AXLE JACK

UPDATED 9-05

PART ORDER NUMBER	KIT DESCRIPTION	KIT INCLUDES	
		REF. #	DESCRIPTION
535K50	SPRING SUPPORT SET	31	SPRING WASHER 8M (4 REQ.)
		32	NUT 8M (4 REQ.)
		33	BOLT M8 X 35 (4 REQ.)
		49	SPRING (4)
		50	SPRING PLATE
535KHU	HYDRAULIC UNIT COMPLETE	4	AIR PUMP
		7	HANDLE SOCKET
		8	SHAFT PIN (3 REQ.)
		9	COTTER PIN (3 REQ.)
		10	PUMP PLUNGER
		11	RETAINER
		12	O-RING
		13	DUST PROOF RING
		14	PUMP RESERVOIR
		15	COPPER WASHER
		16	STEEL BALL M6 (4 REQ.)
		17	PLUNGER CONNECTING ROD
		18	RELEASE VALVE SCREW
		19	RELEASE VALVE SEAL
		20	STEEL BALL M7.5 (3 REQ.)
		21	PIN
		22	VALVE SPRING (2 REQ.)
		23	COPPER WASHER (2 REQ.)
		24	SCREW (2 REQ.)
		25	SCREW PLUG (2 REQ.)
		26	PLUG WASHER (2 REQ.)
		27	OVERLOAD VALVE SCREW (2 REQ.)
		28	SAFTEY VALVE SPRING (2 REQ.)
		29	OVERLOAD TAPERING VALVE (2 REQ.)
		30	FILTER NET (2 REQ.)
		34	CYLINDER
		35	AIR PUMP COPPER WASHER
		36	CYLINDER BOTTOM SEAL
		37	RESERVOIR
		38	PLUG SCREW
		39	SEAL WASHER
		40	STEEL BALL RETAINER (2 REQ.)
		41	CYLINDER TOP SEAL
		42	O-RING
		43	TOP NUT
		44	TRACK RING
		45	SEAL WASHER
		46	RAM HEADER
		47	BACK UP RING
		48	RAM

DO NOT COPY OR DISTRIBUTE THIS MATERIAL WITHOUT PERMISSION OF AFF, INC.



MODEL 535A - 35 TON AIR/HYDRAULIC AXLE JACK

UPDATED 9-05

PART ORDER NUMBER	KIT DESCRIPTION	KIT INCLUDES	
		REF. #	DESCRIPTION
535KRK	REPAIR KIT	12	O-RING
		13	DUST PROOF SEAL
		15	COPPER WASHER
		16	STEEL BALL - 6MM (4 REQ.)
		18	RELEASE VALVE SEAL
		19	RELEASE VALVE SEAL
		20	STEEL BALL - 7.5MM (3 REQ.)
		21	RELEASEVALVE CROSS PIN
		22	VALVE SPRING (2 REQ.)
		23	COPPER WASHER (2)
		26	PLUG WASHER (2 REQ.)
		28	SAFETY VALVE SPRING (2 REQ.)
		29	OVERLOAD TAPERING VALVE (2 REQ.)
		30	FILTER NET (2 REQ.)
		35	AIR PUMP COPPER WASHER
		36	CYLINDER TOP SEAL
		39	SEAL WASHER
		41	CYLINDER TOP SEAL
		42	O-RING
		44	TRACK RING
		45	SEAL WASHER
		47	BACK UP RING
		71-2	O-RING (2REQ.)
		74	WASHER (2 req.)
		77	SEAL
		78	O-RING (2REQ.)
		79	SQUARE RING 2REQ.
		87	NL RETAINER
		88	"Y" SEAL
		93	TREAD SEAL
535K62	HANDLE ASM.	57	CONNECTOR
		58	SPRING PIN 4 X 24
		59	BOLT M8 X 50
		60	SPRING WASHER
		61	NUT M8
		62	HANDLE
		63	DISCHARGE ROD
		64	RETAINER RING
		65	BOLT M4 X 6
		66	SPRING PIN 4 X 24
		67	KNOB
535K51	BASE	51	LOWER COVER
535K52	WHEEL COMPLETE	52	WHEEL
		53	WASHER
		54	SPLIT RING
535K6	PUMP HANDLE	5	HANDLE UPPER
		6	HANDLE LOWER

DO NOT COPY OR DISTRIBUTE THIS MATERIAL WITHOUT PERMISSION OF AFF, INC.



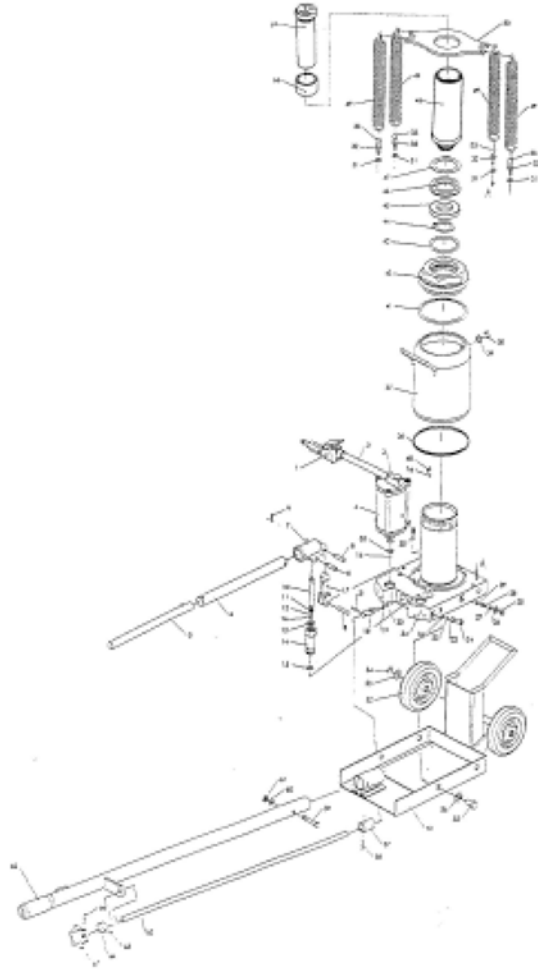
MODEL 535A - 35 TON AIR/HYDRAULIC AXLE JACK

UPDATED 9-05

PART ORDER NUMBER	KIT DESCRIPTION	KIT INCLUDES	
		REF. #	DESCRIPTION
535K4C	AIRMOTOR COMPLETE	71-1	TUBE CONNECTOR
		71-2	O-RING 10 X 1.8 (2 REQ.)
		71-3	REMOVABLE BASE
		71-4	SPLIT WASHER
		72	HEX-SOCKET SCREW
		73	COVER
		74	WASHER
		75	AIR PUMP BODY
		76	SPRING WASHER
		77	SEAL
		78	O-RING 63.5 X 3.55 (2 REQ.)
		79	SQUARE RING (2 REQ.)
		80	PISTON
		81	NUT M5
		82	BLOCK
		83	PLUNGER
		84	SPRING
		85	NUT
		86	PACKING GUIDE
		87	NL RETAINER
		88	"Y" SEAL
		89	COVER
		90	ADJUSTING NUT
		91	PLUNGER COVER
		92	COVER
		93	THREAD SEAL
535K2	AIR HOSE	2	AIRHOSE
535K1C	AIR VALVE	1	AIR VALVE COMPLETE
535K73	COVER SET	71-1	TUBE CONNECTOR
		71-2	O-RING 10 X 1.8 (2 REQ.)
		71-3	REMOVABLE BASE
		71-4	SPLIT WASHER
		73	COVER
		74	SEAL WASHER
535A69	EXTENSION	68	BUSHING
	ASSEMBLY	69	EXTENSION SCREW

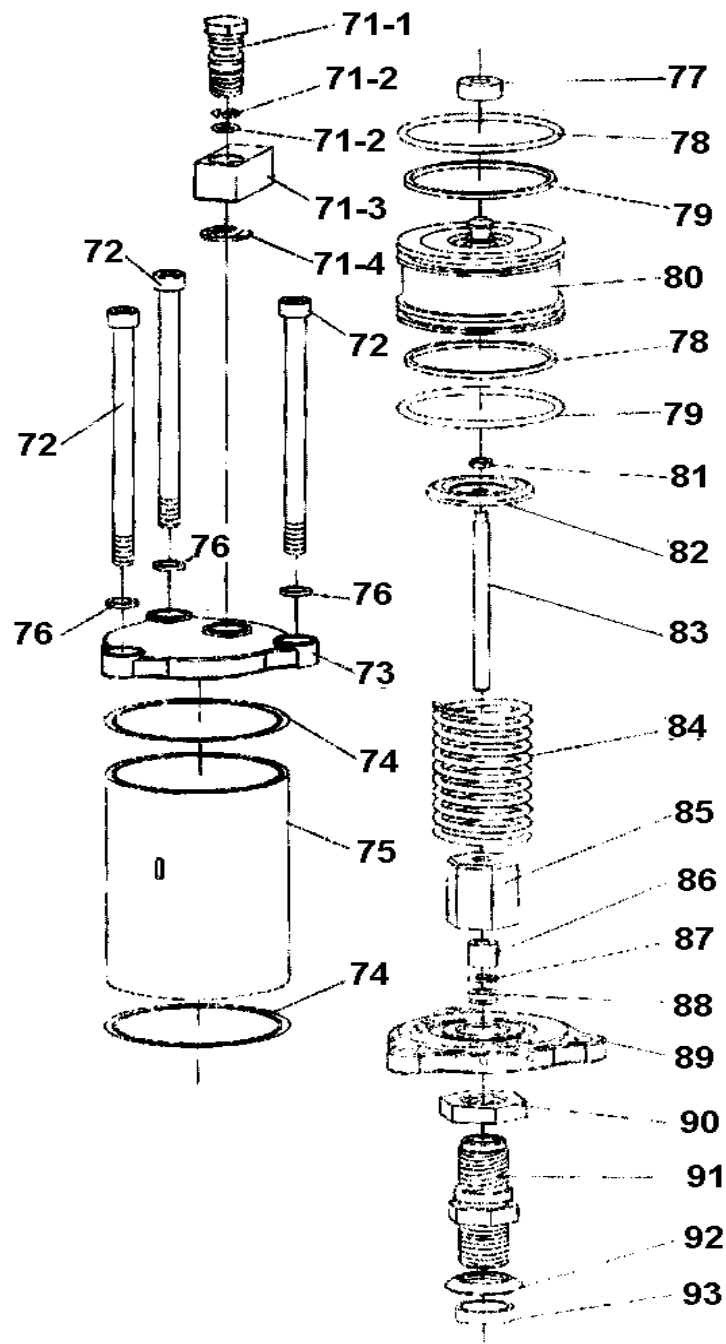
DO NOT COPY OR DISTRIBUTE THIS MATERIAL WITHOUT PERMISSION OF AFF, INC.

MODEL 535A - 35 TON AIR/HYDRAULIC AXLE JACK



DO NOT COPY OR DISTRIBUTE THIS MATERIAL WITHOUT PERMISSION OF AFF, INC.

**MODEL 535A - 35 TON AIR/HYDRAULIC AXLE JACK
AIR MOTOR**



DO NOT COPY OR DISTRIBUTE THIS MATERIAL WITHOUT PERMISSION OF AFF, INC.