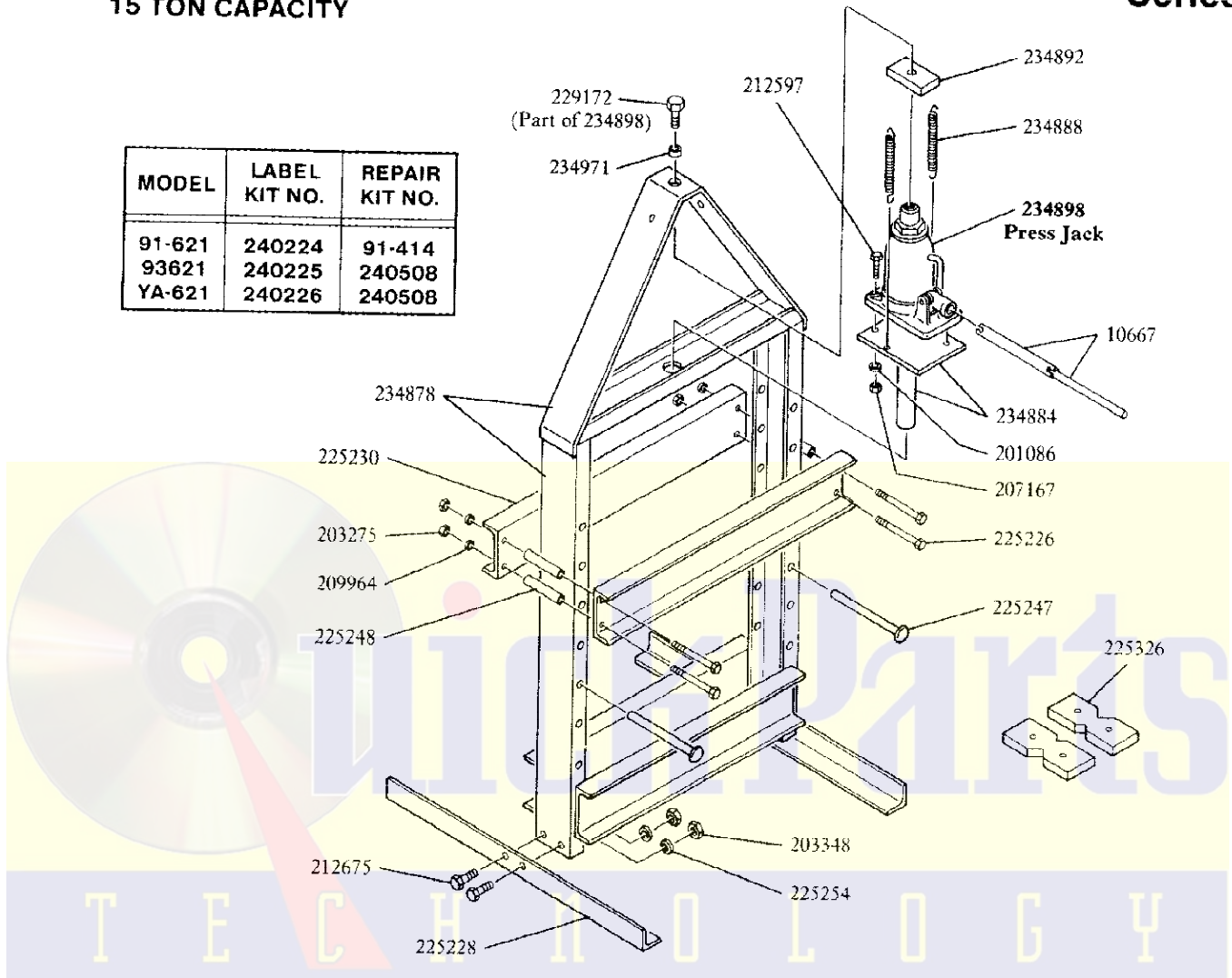


15 TON CAPACITY

MODEL	LABEL KIT NO.	REPAIR KIT NO.
91-621	240224	91-414
93621	240225	240508
YA-621	240226	240508



ASSEMBLY INSTRUCTIONS

- Assemble two 225228 Bases to 234878 Frame using four 212675 Bolts, 225254 Lockwashers and 203348 Nuts.
- Attach two 234888 Springs (with elongated loops at top pointing outward) to support strap of frame through holes provided.
- Insert 234884 Bottom Plate & Stud through hole in upper cross-member (position as shown in illustration).
- Attach bottom ends of springs (with loops pointed inward) through outer holes in bottom plate.
NOTE: These holes are on center with the stud.
- Remove 229172 Bolt from 234898 Press Jack.
- Place the press jack on the bottom plate and align the holes in the jack base with the holes in the bottom plate. Secure the jack with three 212597 Bolts, 201086 Lockwashers and 207167 Nuts.
- Insert the 234892 Support Block between the ram of the press jack and the frame support strap. Place 234971 Sleeve in hole at top of support strap. Apply pipe sealant or sealing tape to 229172 Bolt Threads. Align holes and assemble 229172 Bolt (removed from jack in Step 5). Hold jack ram securely within 1" from the end of the ram or torque bolt to 30 ft. lbs.
CAUTION: If surface beyond 1" from end of ram is marred, damage could result to the jack.
- Assemble one 225230 Press Bed Channel to each side of the frame using four 225226 Bolts (pass through bed channels and spacers), 225248 Spacers, 209964 Lockwashers and 203275 Nuts.
- When tightened, the press bed should be readily adjustable along frame without binding. In use it is supported in the desired position by two 225247 Pins inserted in the appropriate holes in the frame.

212597 Bolt - 5/16 - 18 x 1-1/4"

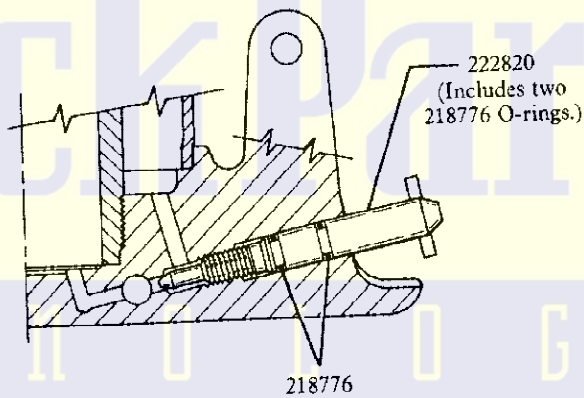
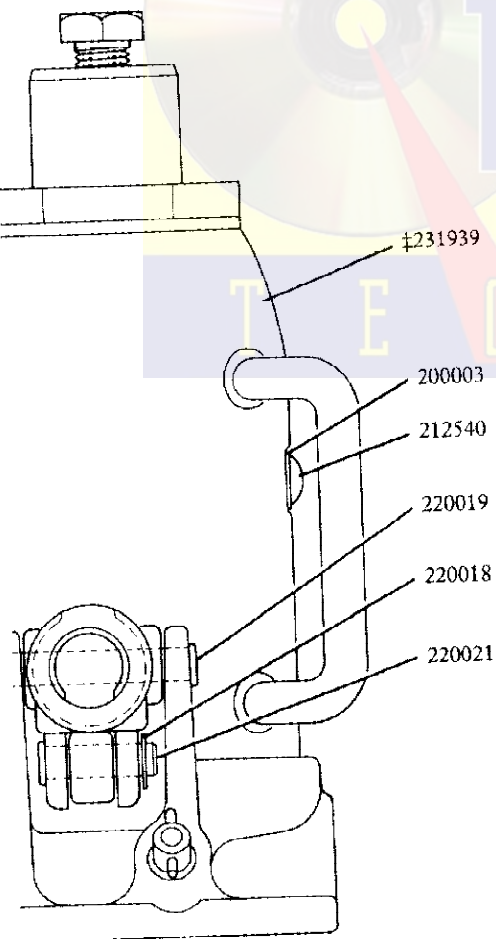
212675 Bolt - 1/2 - 13 x 1-1/2"

225226 Bolt - 3/8 - 24 x 5"

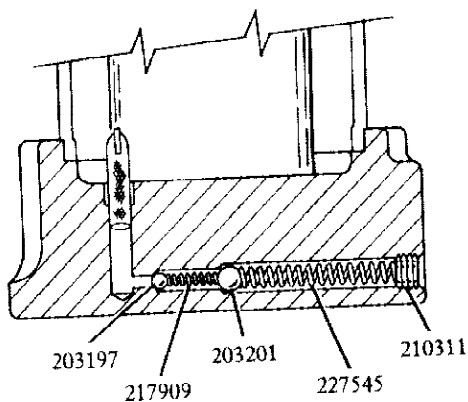
SERVICE PARTS

QTY.	DESCRIPTION	PART	QUAN.	DESCRIPTION	PART	QUAN.	DESCRIPTION
1	Handle assembly	*217909	1	Spring	*227545	1	Spring
1	Gasket	*218776	2	O-ring	229172	1	Bolt
3	Lockwasher	220018	2	Retaining ring	230089	1	Cylinder
1	Ball	220019	1	Fulcrum pin	*230092	1	U-cup packing
1	Ball	220021	1	Pump pin	231939	1	Oil tank
4	Jam nut	*221318	1	Suction screen	231949	1	Base
4	Jam nut	222820	1	Release stem ass'y.	*233889	1	U-cup packing
1	Washer	225226	4	Bolt	233894	1	Pump assembly
3	Nut	225228	2	Base	233895	1	Complete pump ass'y.
1	Pump clip	225230	2	Press bed channel	234878	1	Frame
4	Lockwasher	225247	2	Pin	234884	1	Bottom plate & stud
1	Pipe plug	225248	4	Spacer	234888	2	Return spring
1	Filler screw	225254	4	Lockwasher	234892	1	Support block
3	Bolt	225326	2	Arbor plate	234897	1	Ram assembly
4	Bolt	*225644	1	Heel plate	234898	1	Press jack (15 ton)
1	Packing ring	226179	1	Pump piston	234971	1	Sleeve
1	Pump gland cover	226743	1	Tank nut			
1	Handle socket	*226748	1	Quad ring			

91-414 & 240508 Repair Kits.

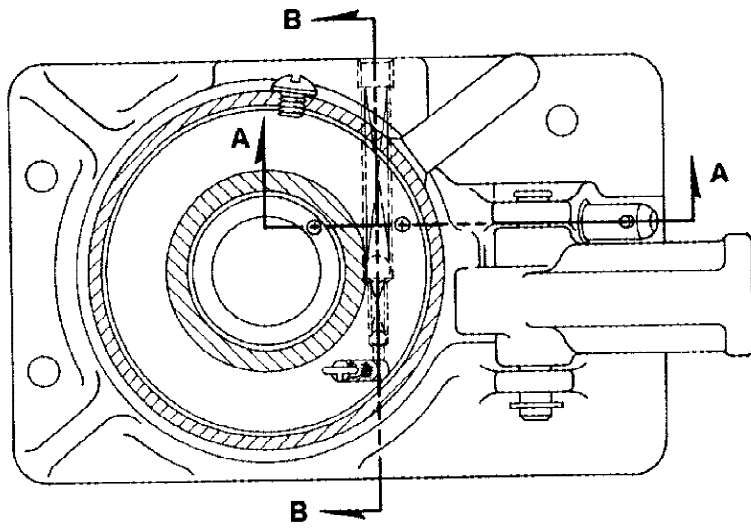


SECTION A-A



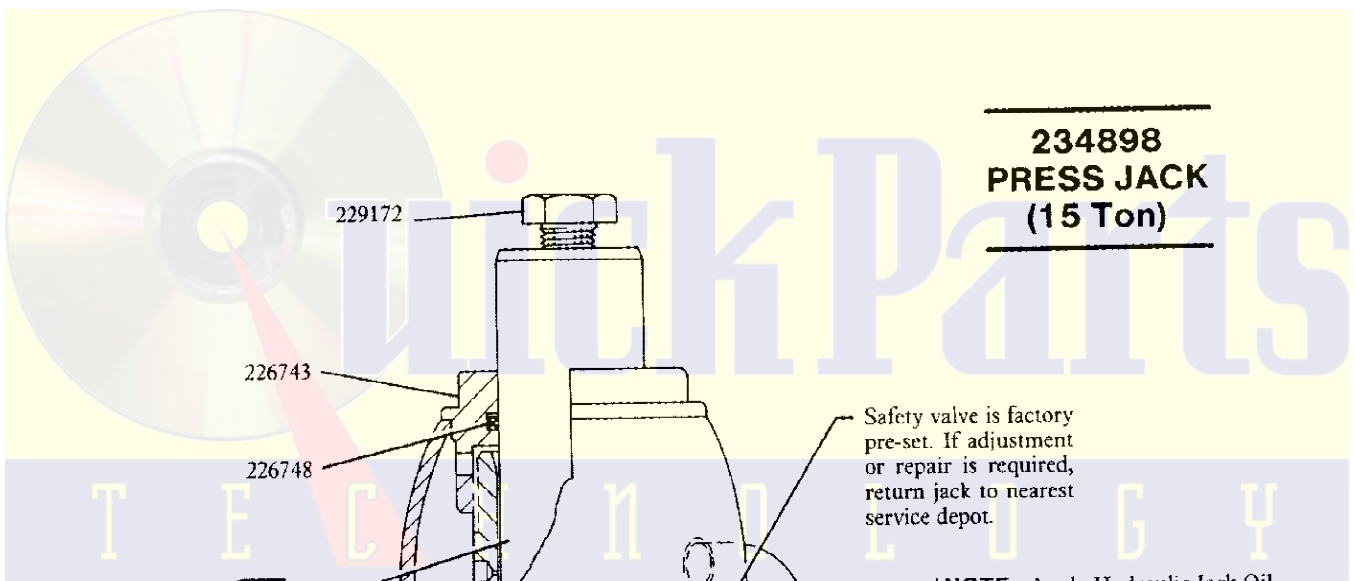
SECTION B-B

Apply Never-Seez (or equivalent) to top of tank before assembling.

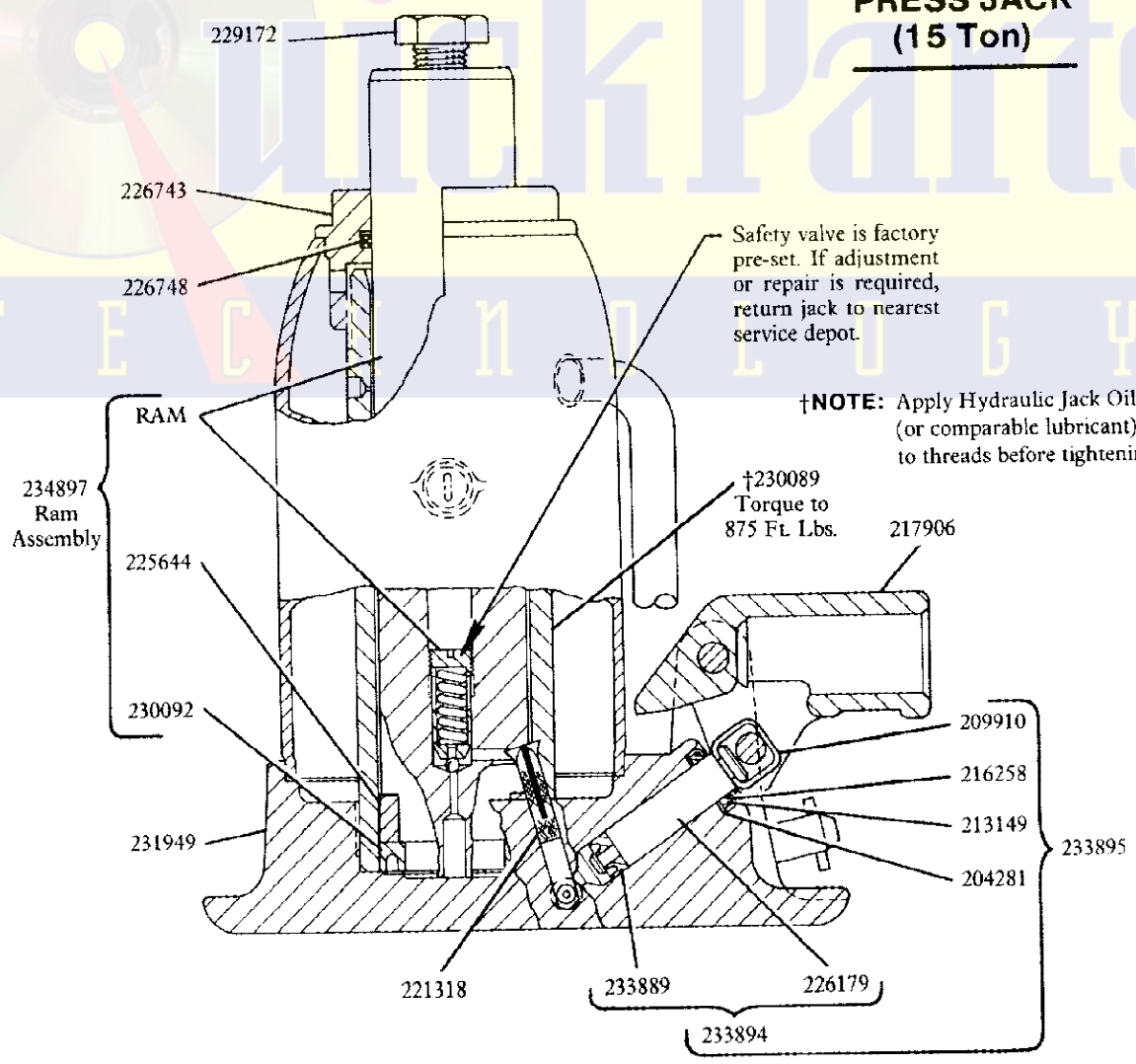


PART
10667
*200003
201086
*203197
*203201
203275
203348
*204281
207167
209910
209964
*210311
212540
212597
212675
*213149
*216258
217906

*Include



**234898
PRESS JACK
(15 Ton)**



†NOTE: / e