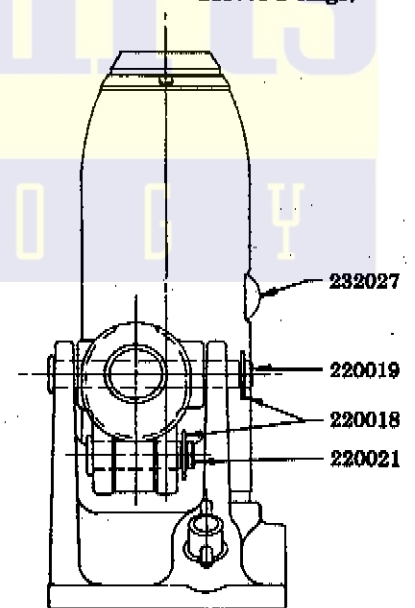
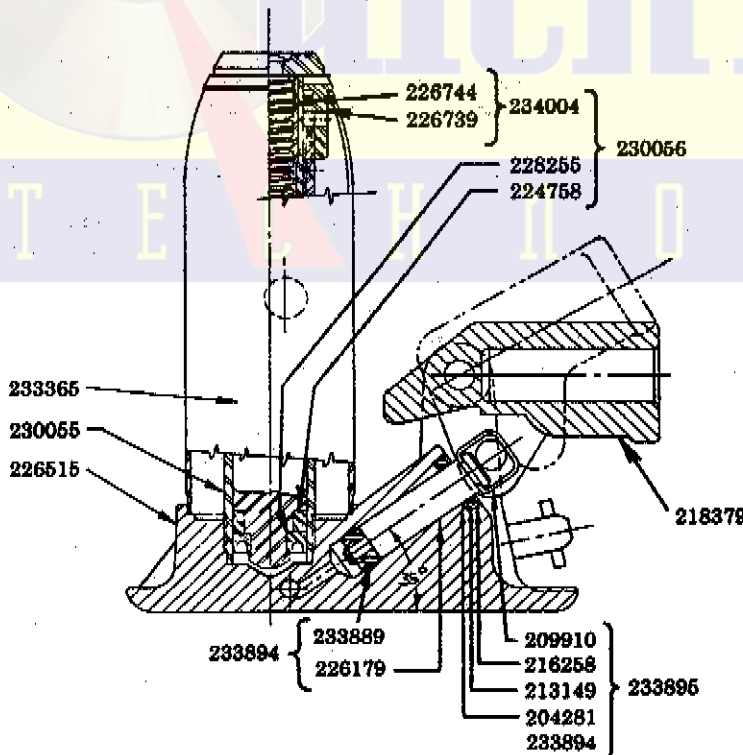
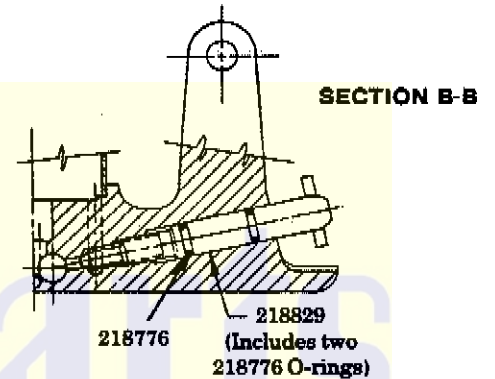
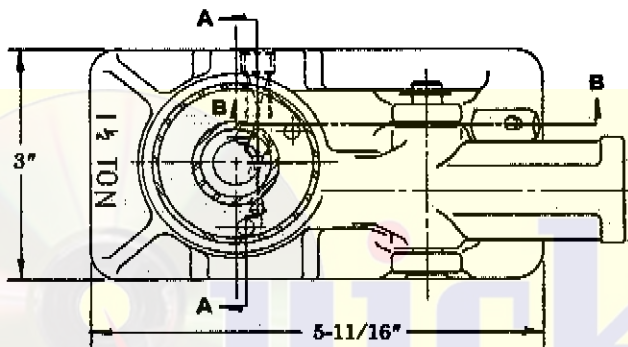
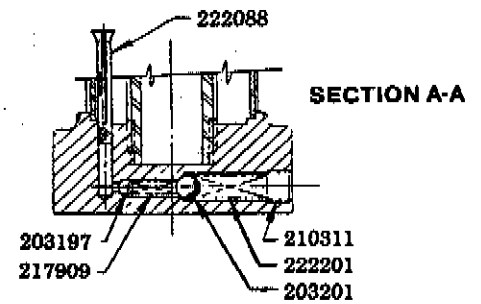
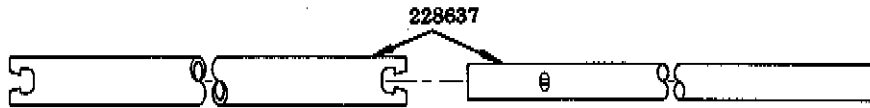


1-1/2 TON CAPACITY

### SPECIFICATIONS:

Height (Closed): 7-1/4"  
 Extension Screw: 2-1/8"  
 Maximum Height: 14-1/2"  
 Power Raise: 5-1/8"

Model	Label Kit No.	Repair Kit No.
91-225	240019	91-410
93225	240020	240503
95225	240021	240503
YA-225	240022	240503



## SERVICE PARTS

Part	Qty.	Description	Part	Qty.	Description
*203197	1	Ball	*224758	1	Heel plate
*203201	1	Ball	226179	1	Piston
*204281	1	Washer	226515	1	Base
209910	1	Pump clip	226739	1	Tank nut
*210311	1	Pipe plug	*226744	1	Quad ring
*213149	1	Packing ring	*228256	1	U-cup packing
*218258	1	Pump gland cover	228637	1	Handle assembly
*217909	1	Spring	230055	1	Cylinder
218379	1	Handle socket	230056	1	Complete ram assembly
*218776	2	O-ring	*232027	1	Filler plug
218829	1	Release stem & o-ring ass'y.	233365	1	Oil tank
220018	2	Retaining ring	*233889	1	U-cup packing
220019	1	Fulcrum pin	233894	1	Pump assembly
220021	1	Pump pin	233895	1	Complete pump assembly
*222088	1	Suction screen	234004	1	Tank nut assembly
*222201	1	Spring			

\*Included in 240503 Repair Kit.

## TROUBLESHOOTING

Problem	Solution
1) Will not lift full height. 2) Will not lower completely.	Reservoir could be overfilled — with jack upright; remove filler screw or filler plug, open release and SLOWLY push jack ram into lowered position. Any excess oil will run out fill hole. Replace filler screw or filler plug when oil has stopped flowing.
1) Will not lift load. 2) Will not lift full height. 3) Pump feels "Spongy" under load.	The Jack could be low on oil — with jack in upright position and ram fully lowered, remove filler screw or filler plug and fill reservoir with clean HYDRAULIC JACK OIL — correct oil level is reached when oil level is at bottom edge of fill hole.  The Jack could be air-bound — open the release valve one full turn and pump the handle vigorously. Close the release valve and pump to full height. Continue pumping several times at full height. Open release valve and push ram down into lowered position. Close release and operate normally.
1) Will not lift load. 2) Handle raises under load. 3) Handle lowers under load.	Valve might not be closing — make certain release valve is closed. Starting with ram in fully lowered position, SLOWLY raise ram out to full height. Open release valve and push ram down into lowered position. Jack should now operate properly.
1) Will not work in horizontal position.	Jack in wrong position for horizontal operation — valving plug on side of jack base must face upward.  The Jack could be low on oil — with jack in upright position and ram fully lowered, remove filler screw or filler plug and fill reservoir with clean HYDRAULIC JACK OIL — correct oil level is reached when oil level is at bottom edge of fill hole.

If the above procedures do not correct the problem, contact your nearest service depot. When submitting any jack or equipment to be repaired, be sure to state the nature of the problem and indicate whether an estimate of the repair cost is needed.

**IMPORTANT:** As with any hydraulic unit, this unit may occasionally become "air-bound" due to being tipped over during shipment. To purge the air from the lines, open the release and pump rapidly a few strokes. Close release and pump to full height, then open the release to allow the ram to descend rapidly. If the pump still seems "spongy", repeat the procedure.

**RETAIN THIS INFORMATION FOR FUTURE REFERENCE**

When ordering replacement parts, list: Part Number, Description, Model Number, and Series Letter.

LINCOLN provides a Distributor Network that stocks equipment and replacement parts.