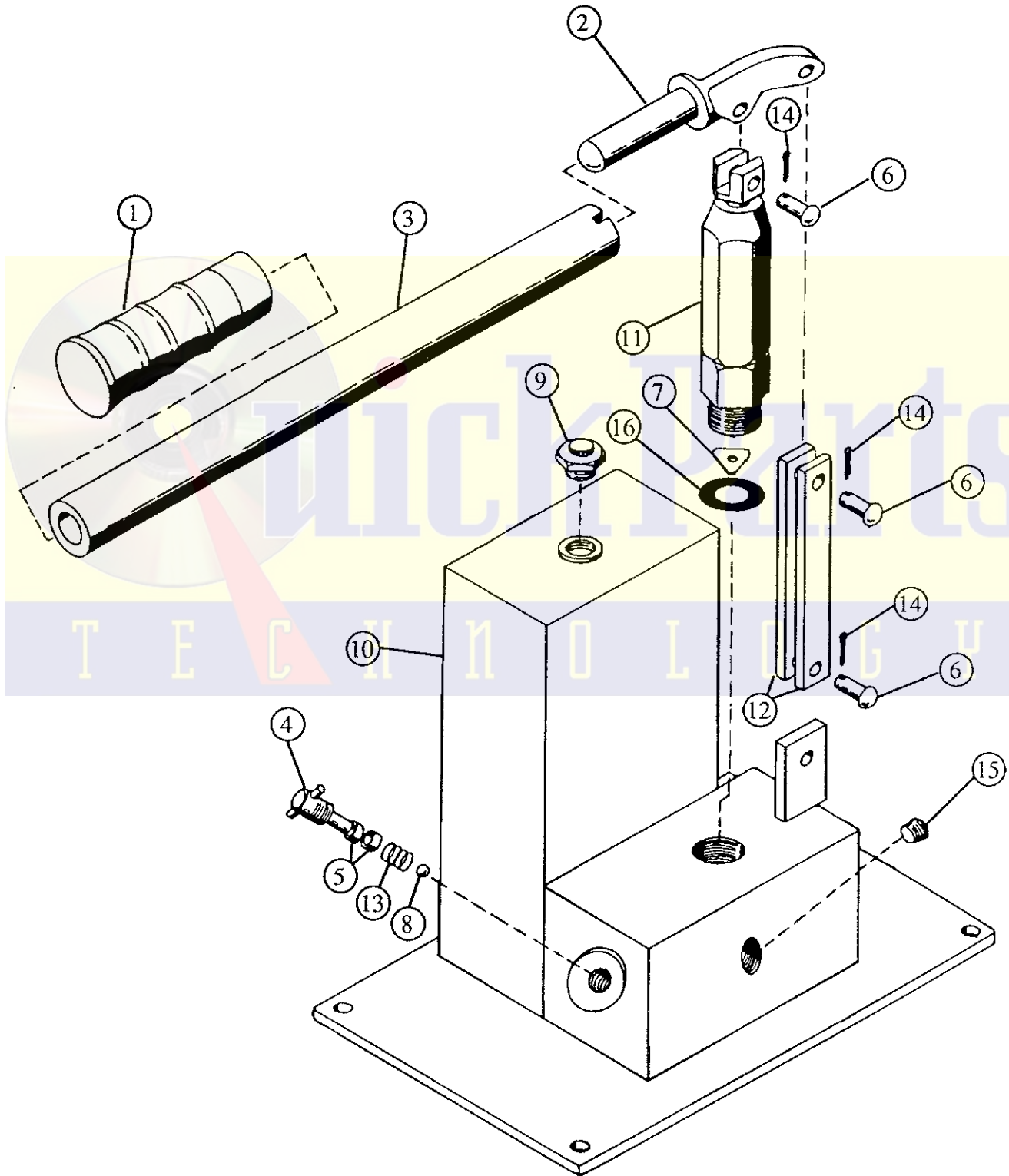


160 SERIES HAND PUMP REPAIR PARTS SHEET AND OPERATING INSTRUCTIONS



160 SERIES HAND PUMP PARTS LIST

ITEM NO.	DESCRIPTION	PART NO.			QUANTITY
		160-3 34070	160-4 34071	160-6 34072	
1	Rubber Grip	55701	55701	55701	1
2	Pump Lever	55702	55702	55702	1
3	Pump Handle	55703	55703	55703	1
4	Release Screw Assembly	55712	55712	55712	1
5	Release Valve Pk.	90552	90552	90552	2
6	Pump Pin	5740015	5740015	5740015	3
7	Washer	81191	81191	81191	1
8	Ball, 3/8"	92550	92550	92550	1
9	Filler Plug	55833	55833	55833	1
10	Reservoir & Block Asm.	563051	563051	563051	1
11	Pump Piston Assembly	563040	563041	563043	1
12	Link	5742104	5742104	5742104	2
13	Spring, Release Cage	55709	55709	55709	1
14	Cotter Pin	93776	93776	93776	3
15	Plastic Pipe Plug	97093	97093	97093	1
16	Filter	85514	85514	85514	1
	Packing Kit	55707	55711	55718	

160 SERIES HAND PUMP OPERATING INSTRUCTIONS

1. Open fill plug of the hand pump and check oil level in the reservoir. The reservoir should be approximately 2/3 full. Use a clean wooden dip stick to check oil level.
2. Close fill plug and open air vent approximately one full turn. Remove 3/8 pipe plug from outlet port of the pump. Connect pressure line to cylinder or system and to the outlet of the pump.
3. Bleed air from the system by opening the release screw and by operating the pump handle approximately twelve times through full stroke. Close the release screw. Actuate the pump sufficiently to raise cylinder at least one half of its stroke. Then by opening the release screw and retracting the cylinder, all air trapped in the connecting line and cylinder should be completely expelled.
4. The release screw must be fully tightened for raising the load and holding pressure. To release pressure or lower the load from the cylinder or the hydraulic system, open the release screw which in turn allows the oil to return to the reservoir.

Templeton, Kenly & Co., Inc.

2525 Gardner Rd. • Broadview, IL 60153 • Phone: (708)865-1500 Fax: (708)865-0894 Toll Free: 1(800)323-9114