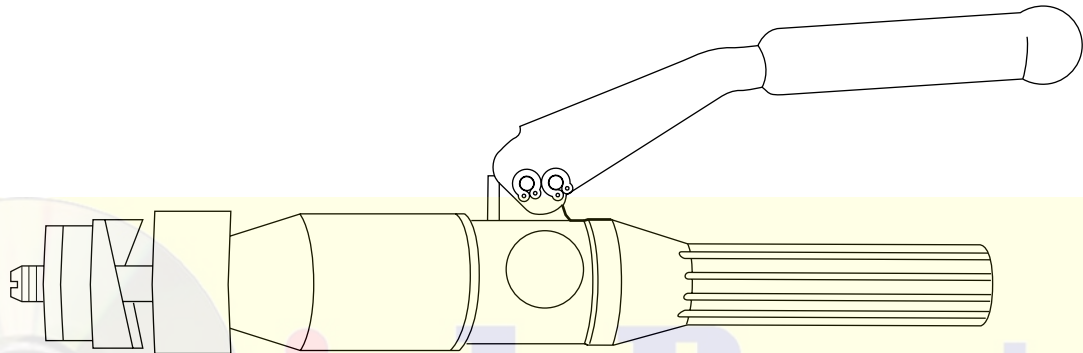


INSTRUCTION MANUAL



7804SB/7806SB

QUICK DRAW™

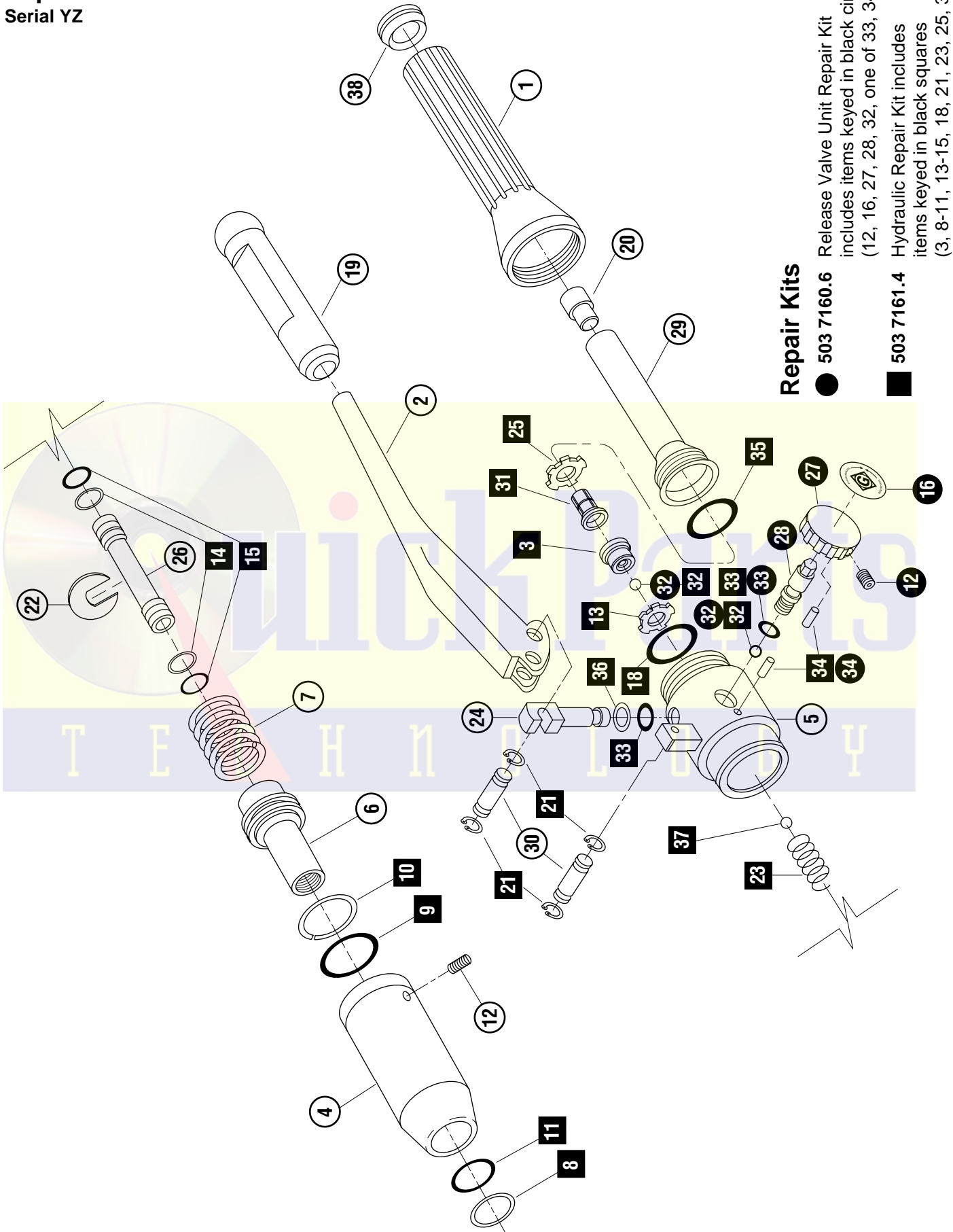
HYDRAULIC PUNCH DRIVER

For units with serial code "YZ"



Read and understand this material before operating or servicing this equipment. Failure to understand how to safely operate this tool could result in an accident causing serious injury or death.

Exploded View
Serial YZ



Repair Kits

- **503 7160.6** Release Valve Unit Repair Kit includes items keyed in black circles. (12, 16, 27, 28, 32, one of 33, 34)
- **503 7161.4** Hydraulic Repair Kit includes items keyed in black squares (3, 8-11, 13-15, 18, 21, 23, 25, 31-37)

Parts List

KEY	PART NO.	DESCRIPTION	QTY.
1	503 6889.3	Handle, Reservoir	1
2	503 6887.7	Handle, Pump	1
3	503 6890.7	Seat, Inlet Check	1
4	503 4271.1	Cylinder, Hydraulic	1
5	503 6900.8	Block, Pump	1
6	503 6896.6	Ram	1
7	503 4272.0	Spring, Compression, 1.07 x 1.37 x 3.18	1
8	905 3847.1	Back-up Ring, Spiral, 1.00 x 1.24 x .027	1
9	905 1316.9	O-Ring, 1.50 x 1.75 x .125 nitrile	1
10	905 3849.8	Back-up Ring, Spiral, 1.50 x 1.74 x .027	1
11	905 1330.4	O-Ring, 1.00 x 1.25 x .125 Nitrile	1
12	905 1032.1	Screw, Set, #8-32 x .187" Socket Cup	2
13	905 3761.0	Retaining Ring, .125 Truarc	1
14	905 5121.4	Back-up Ring, Spiral, .373 x .479 x .056	2
15	905 0168.3	O-Ring, .364 x .500 x .068 Nitrile	2
16	503 1878.0	Decal, Punch Release	1
18	905 1130.1	O-Ring, 1.50 x 1.62 x .062 Nitrile	1
19	502 3258.4	Grip, Rubber	1
20	503 2488.8	Plug, Bladder	1
21	905 4186.3	Retaining Ring, .217 Truarc	4
22	503 6892.3	Plate, Retaining	1
23	905 3845.5	Spring, Compression, .152 x .180 x .380	1
24	503 7715.9	Plunger	1
25	905 3503.0	Retaining Ring, .562 Truarc	1
26	503 6891.5	Coupler, Ram	1
27	503 6886.9	Knob, Release Valve	1
28	503 6893.1	Stem, Release Valve	1
29	503 4269.0	Bladder, Rubber	1
30	503 7714.0	Pin, Handle	2
31	503 6899.0	Filter, Oil	1
32	905 0678.2	Ball, Steel, .187 Diameter	2
33	905 3854.4	O-Ring, .250 x .375 x .062	2
34	905 0458.5	Pin, Roll, .125 x .375	1
35	905 1741.5	O-Ring, 1.31 x 1.56 x .125 Nitrile	1
36	905 4230.4	Back-up Ring, Spiral, .265 x .318 x .050	1
37	905 0452.6	Ball, Steel, .218 Diameter	1
38	503 6894.0	Cap, Reservoir Handle	1
	503 7622.5	Decal, Identification (not shown)	1

Draw Studs and Accessories

CATALOG NO.	PART NO.	DESCRIPTION	QTY.
29451	502 9451.2	Draw stud, 7/16" stainless steel (optional)	1
31872	503 1872.1	Draw stud, 3/4-16 x 4.12	1
31874	503 1874.8	Adapter, step-saver (optional)	1
1924AA	503 3248.8	Spacer, .767 x 1.37 x .875	1
1614SS	503 0043.1	Screw, 3/8" short adapter	1
33967	503 3967.2	Adapter, stud, 3/8-24 x 3/4-16	1

