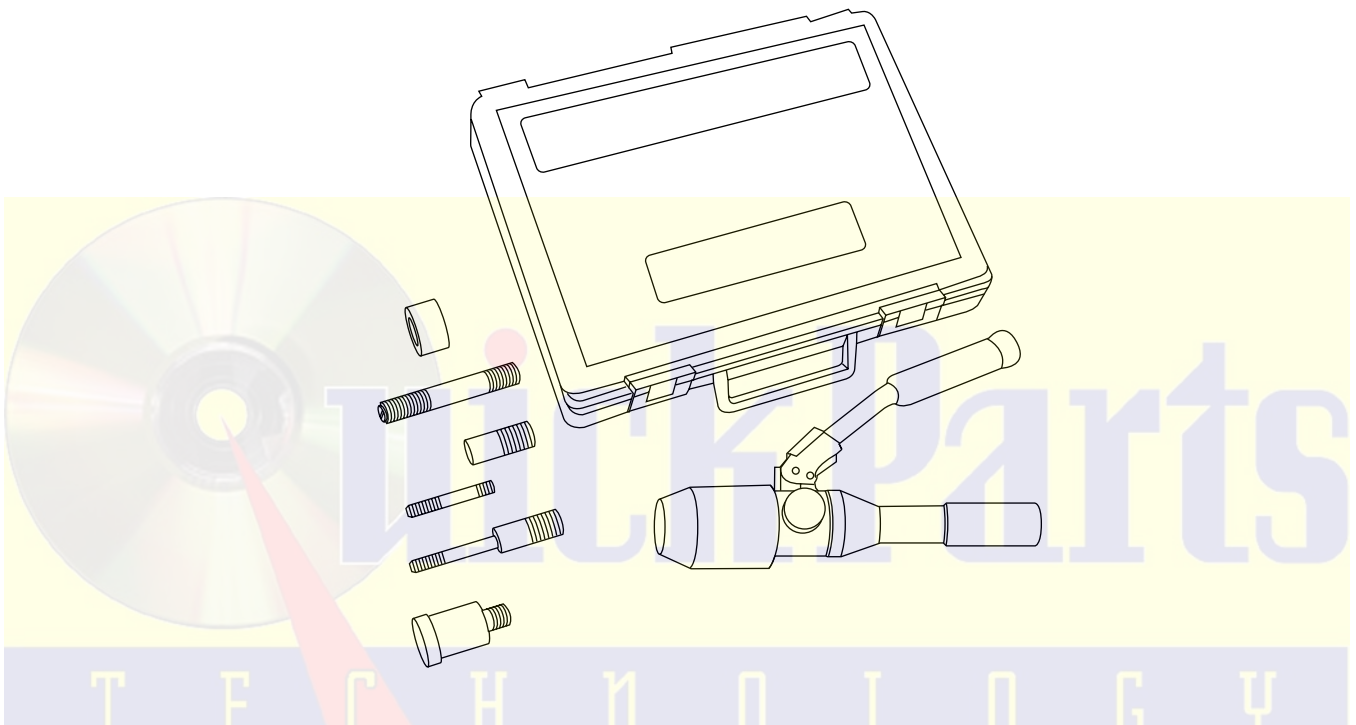


# OPERATION, SERVICE AND PARTS INSTRUCTION MANUAL



## 7804SB/7806SB QUICK DRAW™ HYDRAULIC PUNCH DRIVER SERIAL CODE "WY"



**Read and understand** this material before operating or servicing this equipment. Failure to understand how to safely operate this tool could result in an accident causing serious injury or death.

## Parts Breakdown

### Serial No. Series WY

The 7804/7806 Punch Driver System includes a self-contained hand operated pump/driver unit, draw studs and the spacers necessary to punch 1/2" through 2" conduit size holes with Standard Greenlee Knockout Punches and Slug-Buster® Knockout Punches, and 1/2" through 1-1/4" conduit size holes with Slug-Splitter® Knockout Punches. See Capacity Chart in Specifications section for punching capacity and draw stud selection.

### 7804SB Parts Breakdown

1614SS DRAW STUD  
33967 ADAPTER  
31874 ADAPTER  
29451 7/16" DRAW STUD  
1924AA SPACER  
31872 3/4" DRAW STUD

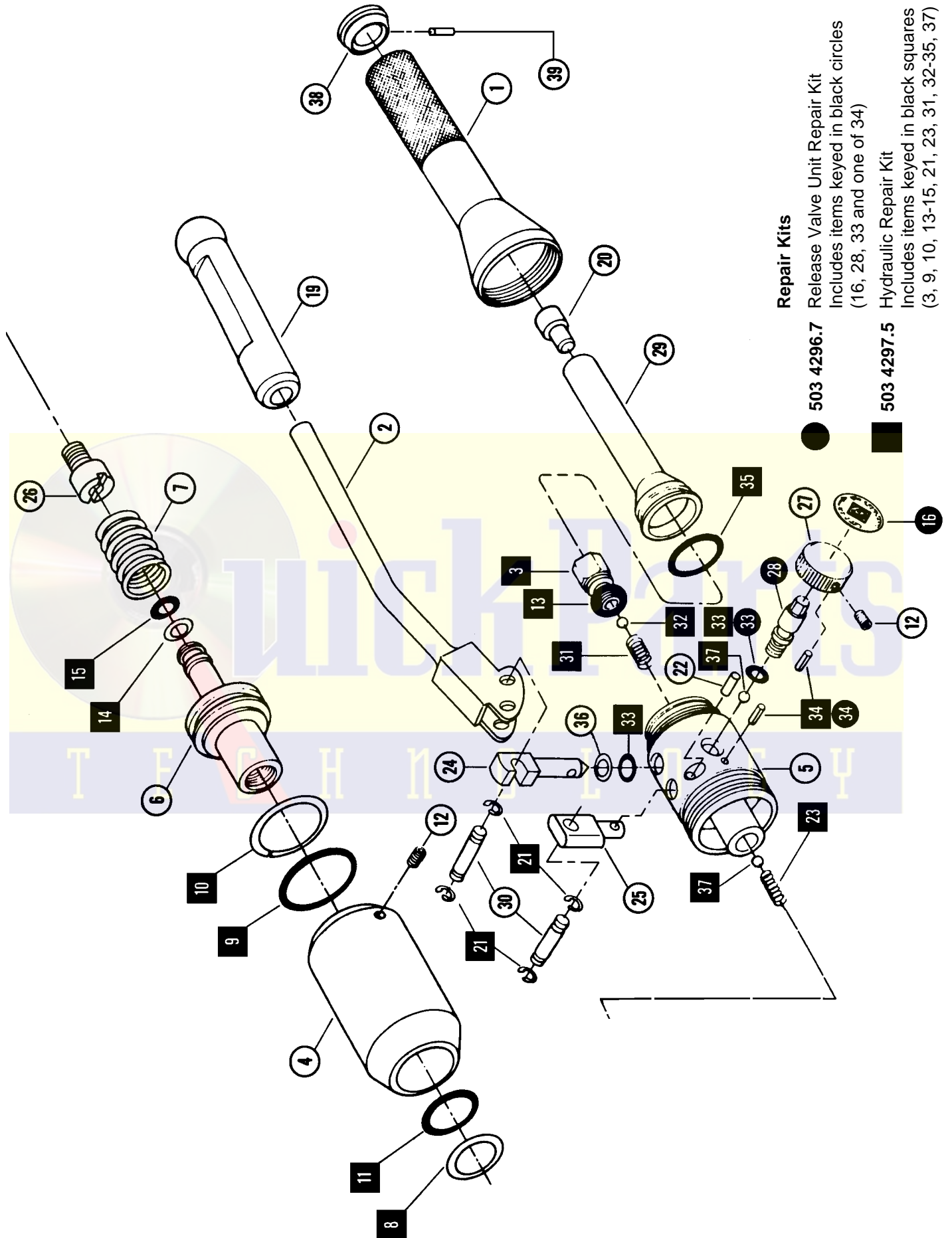
### Typical Setup Using Draw Stud

SHEET METAL  
1614SS DRAW STUD  
1924AA SPACER  
33967 ADAPTER  
PUNCH  
DIE  
1924AA SPACER  
31872 3/4" DRAW STUD

### 7806SB Parts Breakdown

1614SS DRAW STUD  
33967 ADAPTER  
1924AA SPACER  
31872 3/4" DRAW STUD

Plus 1/2"-2" Slug-Buster® Punches and Dies



**Parts List**

KEY	PART NO.	DESCRIPTION	QTY.
1	503 4281.9	Bladder Handle .....	1
2	503 4285.1	Lever Handle Weldment .....	1
3	503 4275.4	Intake Seat .....	1
4	503 4271.1	Cylinder .....	1
5	503 4273.8	Pump Block .....	1
6	503 4270.3	Piston .....	1
7	503 4272.0	Compression Spring .....	1
8	905 3847.1	Back-up Ring (1.000" I.D.) .....	1
9	905 1316.9	O-Ring, 1-1/2" x 1-3/4" x 1/8" .....	1
10	905 3849.8	Back-up Ring (1.500" I.D.) .....	1
11	905 1330.4	O-Ring, 1" x 1-1/4" x 1/8" (90 Duro.) .....	1
12	905 1032.1	Socket Set Screw, #8-32 x .187" .....	2
13	905 3852.8	Copper Washer .....	1
14	905 0883.1	Back-up Ring (.375" I.D.) .....	1
15	905 0168.3	O-Ring, 3/8" x 1/2" x 1/16" .....	1
16	503 1878.0	Punch Release Decal .....	1
19	502 3258.4	Grip .....	1
20	503 2488.8	Bladder Plug .....	1
21	905 3844.7	Retaining Ring .....	4
22	905 3846.3	1/4" Diameter x 1.00" Long Drive-Lok Pin .....	1
23	905 3845.5	Discharge Compression Spring .....	1
24	503 4268.1	Plunger .....	1
25	503 4274.6	Fulcrum Post .....	1
26	503 4276.2	Discharge Check Retainer .....	1
27	503 4266.5	Release Valve Knob .....	1
28	503 4265.7	Release Valve Stem .....	1
29	503 4269.0	Rubber Bladder .....	1
30	503 4286.0	Handle Pin .....	2
31	503 4287.8	Intake Compression Spring .....	1
32	905 0678.2	Ball, 3/16" Diameter .....	1
33	905 3854.4	O-Ring, 1/4" x 3/8" x 1/16" .....	2
34	905 0458.5	Roll Pin, 1/8" Diameter x .375" Long .....	2
35	905 1456.4	O-Ring, 1-1/8" x 1-5/16" x 3/32" .....	1
36	905 3853.6	Back-up Ring (.250" I.D.) .....	1
37	905 0292.2	Ball, 7/32" Diameter .....	2
38	503 4278.9	End Cap .....	1
39	905 3855.2	Drive Pin, 1/8" Ø x 1/4" Long .....	1

**Parts List (cont'd)**

**Draw Studs and Accessories**

<b>PART NO.</b>	<b>DESCRIPTION</b>	<b>QTY.</b>
502 9451.2	7/16" Draw Stud (optional 7806SB) .....	1
503 1872.1	3/4" Draw Stud .....	1
503 1874.8	Step Saver Adapter (adapts punches for 3/4" studs to 7/16" studs) (Optional 7806SB) ....	1
500 3248.8	Spacer (1924AA) .....	1
503 0043.1	3/8" Screw (1614SS) .....	1
503 3967.2	Adapter (adapts punches for 3/8" studs to driver) .....	1

