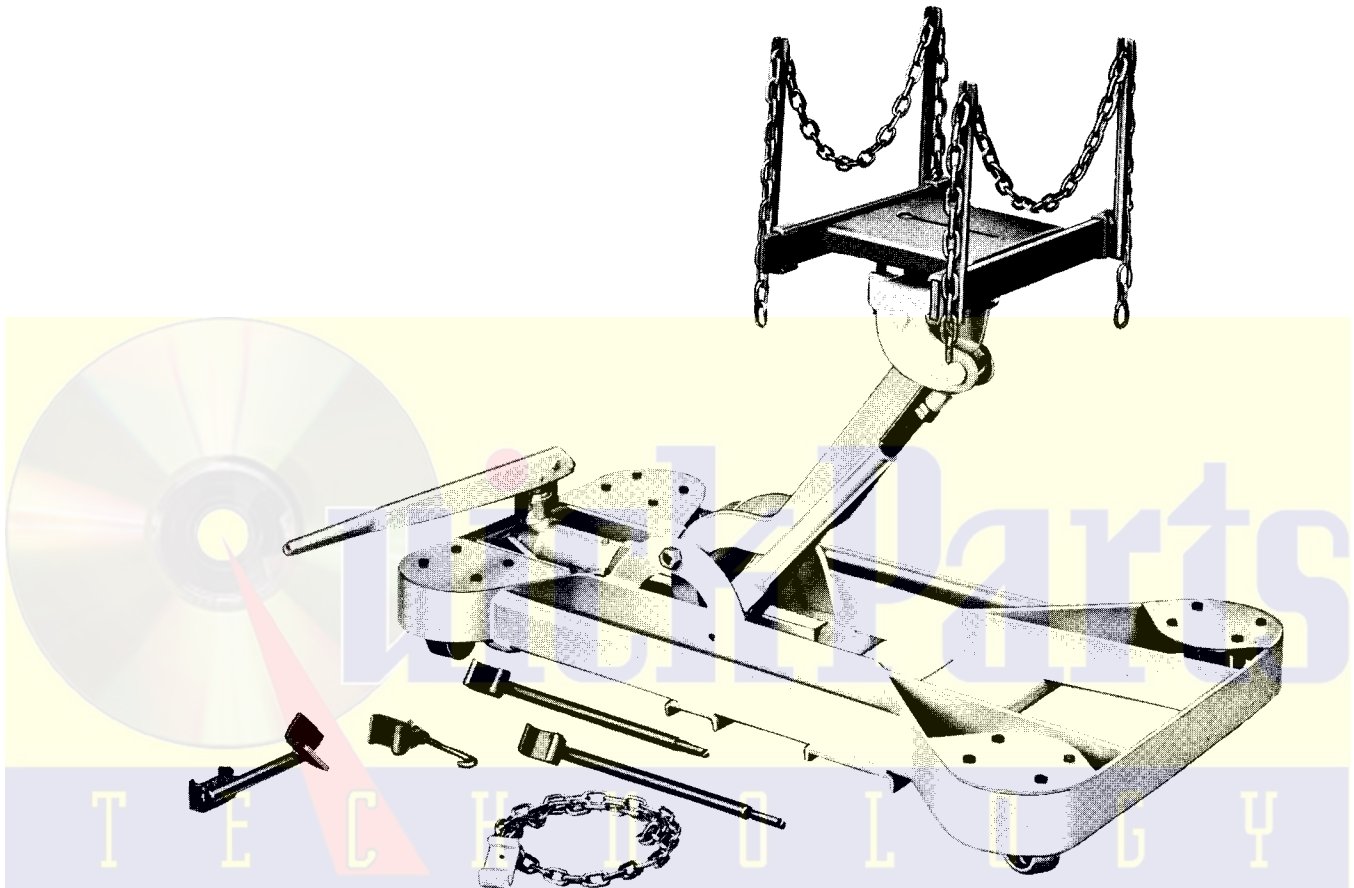


BLACKHAWK® LIFTING EQUIPMENT

Master Copy

instructions & repair parts

MODEL T-4-2 TRANSMISSION JACK Capacity 1 Ton

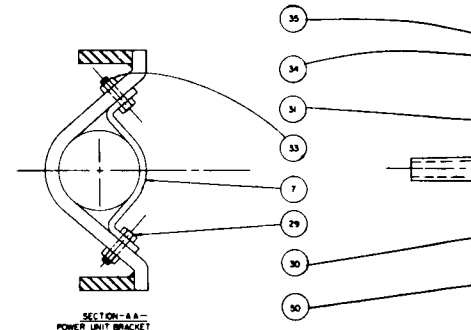
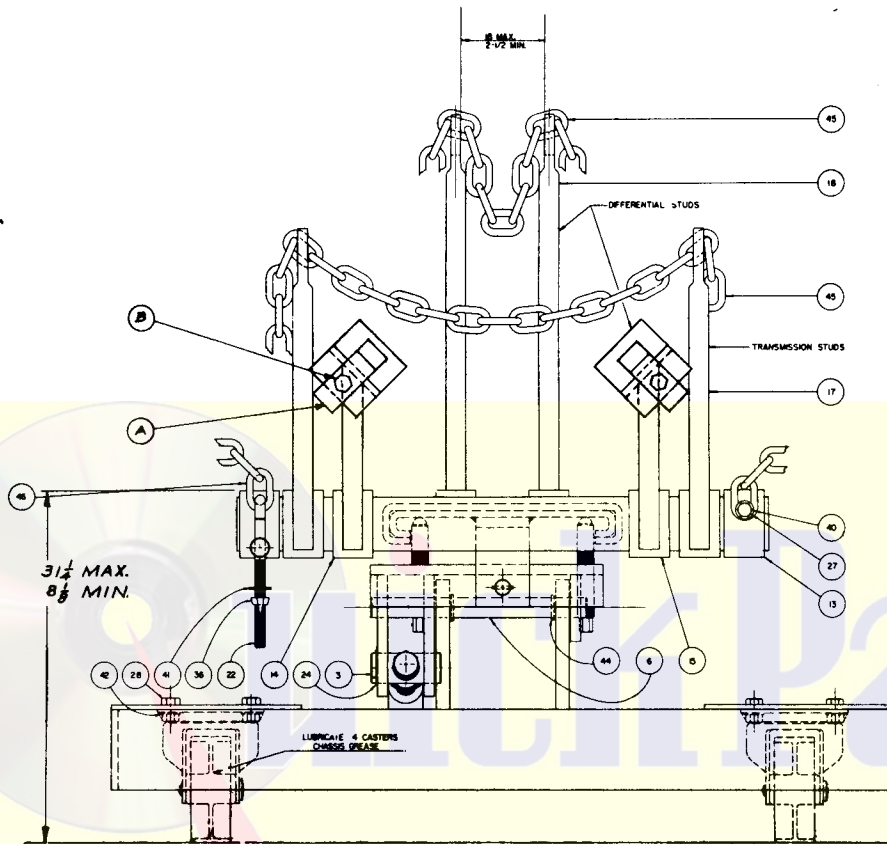


OPERATING INSTRUCTIONS FOR MODEL T-4 BLACKHAWK HEAVY DUTY TRUCK AND BUS TRANSMISSION JACK

*Used for (1) truck and passenger car transmissions and truck differentials
(2) the removal and replacement of both front and rear type engines (3) placing
compact cars on jack stands. NO HOIST REQUIRED!*

1. Unpack jack and tighten all cap screws (it is possible these may loosen in shipping).
2. Check for hydraulic leaks and damage in shipment.
3. Remove solid closure screw from reservoir and install vented plug attached to this unit making sure oil level is even with fill hole. Use only LX-21 Jack Oil for filling. DO NOT USE BRAKE FLUID.
4. TO EXPEL AIR:
To remove air pockets or vacuum, raise arm manually to top position and block there. Open the release valve, pull ram forward manually to the outward position. Lower arm and ram assembly and repeat this operation two or three times if necessary.
5. Install proper adaptor for work to be done. This is accomplished by removing L shaped hinge pin and placing adaptor clevis over jack head and re-inserting hinge pin. See diagram reverse side of this page.

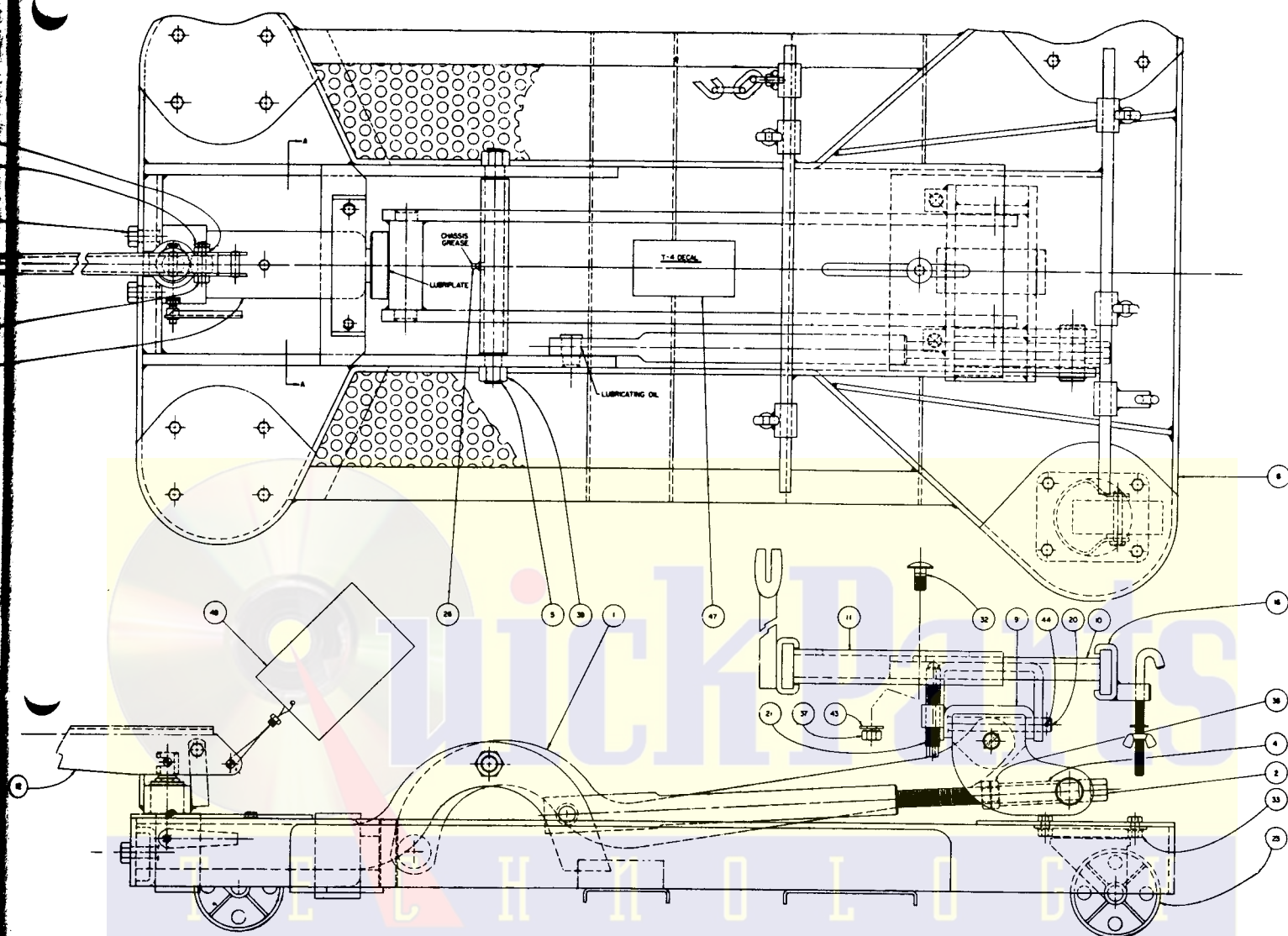
Note: Always install end of adaptor as marked "TOWARD PUMP HANDLE" or "TOWARD ENGINE" as the case may be. Adaptor not shown.



WHEN ORDERING PARTS INCLUDE BOTH MODEL AND SERIAL NUMBER AS WELL AS PART NAME AND NUMBER

Item No.	Part No.	Description	No. Req.
1	D44.103.....	Arm Assembly	1
2	D45.028.....	Parallel Screw	1
3	D46.055.....	Parallel Nut	1
4	D47.039.....	Sleeve	1
5	D48.061.....	Stud Pivot	1
6	D49.104.....	Shaft Tilt	1
7	D50.111.....	Support Bracket	1
8	D51.001.....	Frame Assembly	1
9	D52.111.....	Head Assembly	1
10	D53.111.....	Channel Assembly, Lower	1
11	D54.111.....	Channel Assembly, Upper	1
12	D55.135.....	Handle-Pump	1
13	D56.111.....	Chain Adapter	1
14	D57.111.....	Angle Assembly, R.H.	1
15	D58.111.....	Angle Assembly, L.H.	1
16	D59.111.....	Hook Adapter Assembly	1
17	D60.111.....	Stud Assembly, Short	4
18	D61.111.....	Stud Assembly, Long	2
20	D63.061.....	Hinge Pin	1
21	D64.028.....	Tilt Screw	2
22	D65.017.....	Chain Hook	1
23	D66.154.....	Basick Caster	4
24	D241.044.....	RS-112 Spirolax Ring	2

Item No.	Part No.	Description	No. Req.
26	D243.096.....	Grease Fitting	1
27	D244.028.....	5/16-18x1/2 Hex Cap Screw.....	1
28	D245.028.....	3/8-16x3/4 Hex Cap Screw.....	16
29	D246.028.....	3/8-16x1 1/4 Hex Cap Screw.....	2
30	D247.028.....	3/8-24x1 1/2 Hex Cap Screw.....	1
31	D248.028.....	1/2-20x1 3/4 Hex Cap Screw.....	2
32	D249.028.....	1/2-13x1 Carriage Bolt	1
33	D250.055.....	3/8-16 Hex Nut Automotive.....	18
34	D232.055.....	3/8-24 Palnut	1
35	D231.055.....	3/8-24 Hex Nut Jam.....	1
36	D251.055.....	3/8-16 Wing Nut	1
37	D252.055.....	1/2-13 Hex Nut Automotive.....	1
38	D253.055.....	3/4-10 Hex Nut Jam	2
39	D254.055.....	3/4-16 Hex Nut Automotive.....	2
40	D255.108.....	5/16 SAE Washer	1
41	W40.108.....	3/8 SAE Washer	1
42	D256.108.....	3/8 Shake Proof Washer.....	16
43	D257.108.....	1/2 SAE Washer	1
44	D238.061.....	5/32 Dia. Roll Pins	4
45	D258.066.....	5-0x48 Straight Link Chain.....	2
46	D259.066.....	4-0x48 Straight Link Chain.....	1
47	T-4.26.....	Decal	1
48	117-R.....	Instruction Card	1
50	T4.05A-2.....	Power Unit Assembly	1



SPECIFICATIONS

Capacity.....	2000 Lbs.
Overall Length.....	46 1/2 In.
Overall Width: Front.....	29 3/4 In.
Back.....	25 In.
Low Lifting Height	8 1/2 In.
Max. Lifting Height.....	31 1/4 In.
Wheel Diameter.....	4 In.
Shipping Weight.....	250 Lbs.

TILT FEATURE

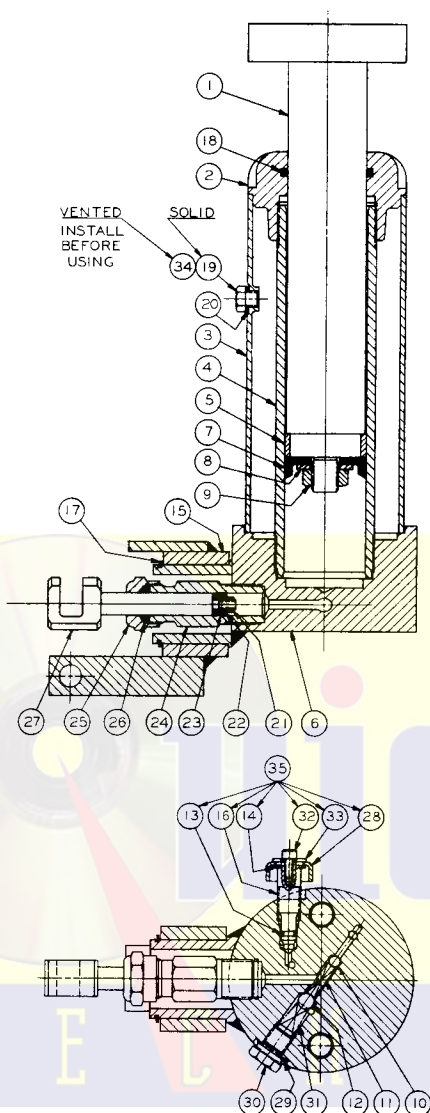
Front.....	45°
Back.....	12°
Side, L.H.	10°
Side, R.H.	10°



USE ONLY BLACKHAWK
LX-21 JACK OIL AND
GENUINE FACTORY PARTS.

T4.05A-2 POWER UNIT FOR T-4-2 TRANSMISSION JACK

WHEN ORDERING PARTS INCLUDE BOTH MODEL AND
SERIAL NUMBER AS WELL AS PART NAME AND NUMBER



Item No.	Part No.	Description	No. Req.
1	D68.040	Ram Assembly	1
2	AA85.20-2	Top Cap	1
3	AA85.25-2	Reservoir	1
4	CB9.30-2	Cylinder	1
5	AA85.29-2	Plunger Ring	1
6	D940.005	Base	1
* 7	M73.41-1	Plunger Cup	1
8	AA85.43	Plunger Cup Washer	1
9	AA85.120	Hex Nut	1
* 10	1.16	7/32 Dia. Ball Intake Valve	1
* 11	D97.183	Spring-Intake Valve	1
* 12	S1.16	5/16 Dia. Ball Exhaust Valve	1
* 13	AJ100.312	"O" Ring	1
14	D943.044	Retaining Ring	1
15	D62.151	Swivel Bracket	1
16	D941.010	Release Valve Spindle	1
17	D242.044	Retaining Ring	1
* 18	EJ100.102	Quad Ring	1
19	C9.22-2	Filler Plug	1
* 20	C9.37	Gasket-Filler Plug	1
* 21	CB9.55	Retaining Nut-Pump Cup	1
* 22	F11.52	Spreader-Pump Cup	1
* 23	F11.53	Pump Cup	1
24	CB9.50-1	Cylinder-Pump	1
25	CB9.54-1	Nut-Pump Gland	1
* 26	5.75S	Packing-Pump	1
27	D72.040	Piston-Pump	1
28	D942.135	Release Valve Handle	1
* 29	B159.167	Valve Plug Gasket	1
30	CB9.185-2	Valve Plug	1
* 31	BA85.183	Spring-Exhaust Valve	1
32	D945.028	Lockscrew	1
33	D944.108	Washer	1
34	AJ100.406	Vent Plug	1
35	D941.900	Release Valve Assembly	1

Use Jack/Saver Kit No. T4K-3 Containing Items Indicated by Asterisk (*).

NOTE: Complete T4.05A-2 Power Unit is available either as exchange or outright purchase.

Guarantee

Blackhawk guarantees its Lifting Equipment against defects in workmanship and material for 90 days from date of delivery to the user. Only exception is chain, which follows the trade custom of its manufacturers and cannot be guaranteed.

When question of warranty arises, the user should send his unit to the nearest Blackhawk Franchised Service Depot for inspection, transportation to be prepaid and evidence of delivery date furnished. Contact Blackhawk Mfg. Co., Milwaukee, Wis., for list of Franchised Service Depots.

If the difficulty comes under the terms of our guarantee, the Franchised Service Depot will repair or replace parts affected and return prepaid. Our guarantee does not cover ordinary wear and tear, abuse, misuse, overloading, altered products or use of improper fluid.

Franchised Service Depots



For quality workmanship with genuine Blackhawk parts select a Franchised Blackhawk Service Depot for your repair work. Only repairs performed by a franchised service depot displaying this official franchise service depot sign are backed with full factory guarantee. The Classified Section in your Phone Book lists your nearest Franchised Service Depot.

BLACKHAWK MFG. CO.

MILWAUKEE 46, WISCONSIN

