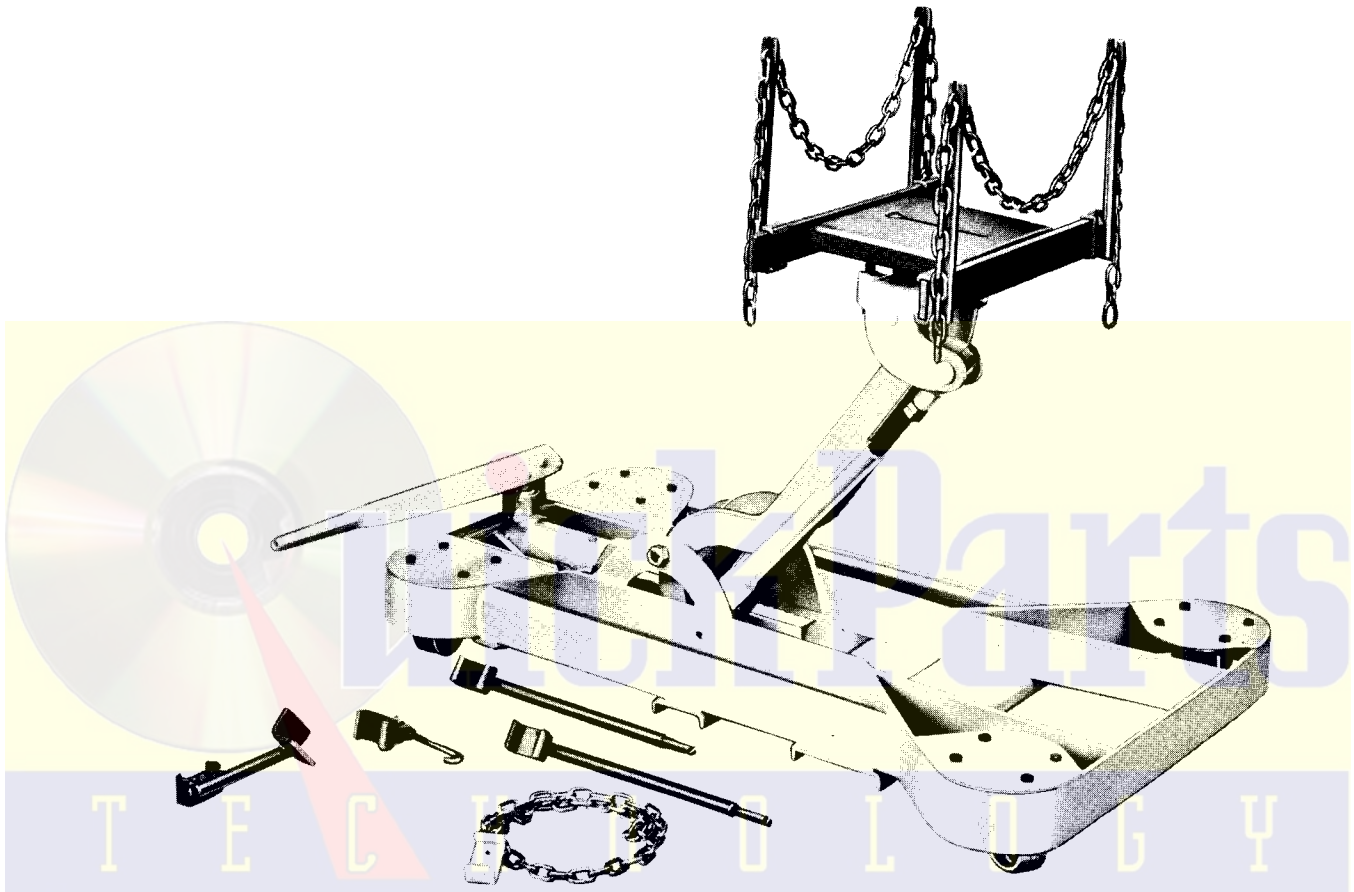


# BLACKHAWK® LIFTING EQUIPMENT

Master Copy

## instructions & repair parts

### MODEL T-4-1 TRANSMISSION JACK Capacity 1 Ton



#### OPERATING INSTRUCTIONS FOR MODEL T-4 BLACKHAWK HEAVY DUTY TRUCK AND BUS TRANSMISSION JACK

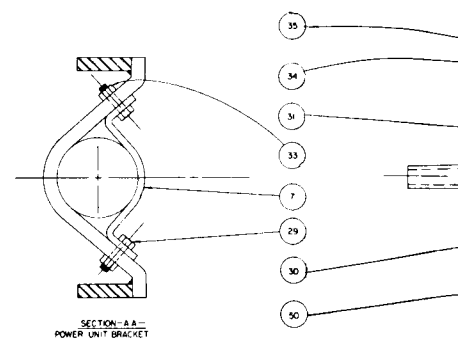
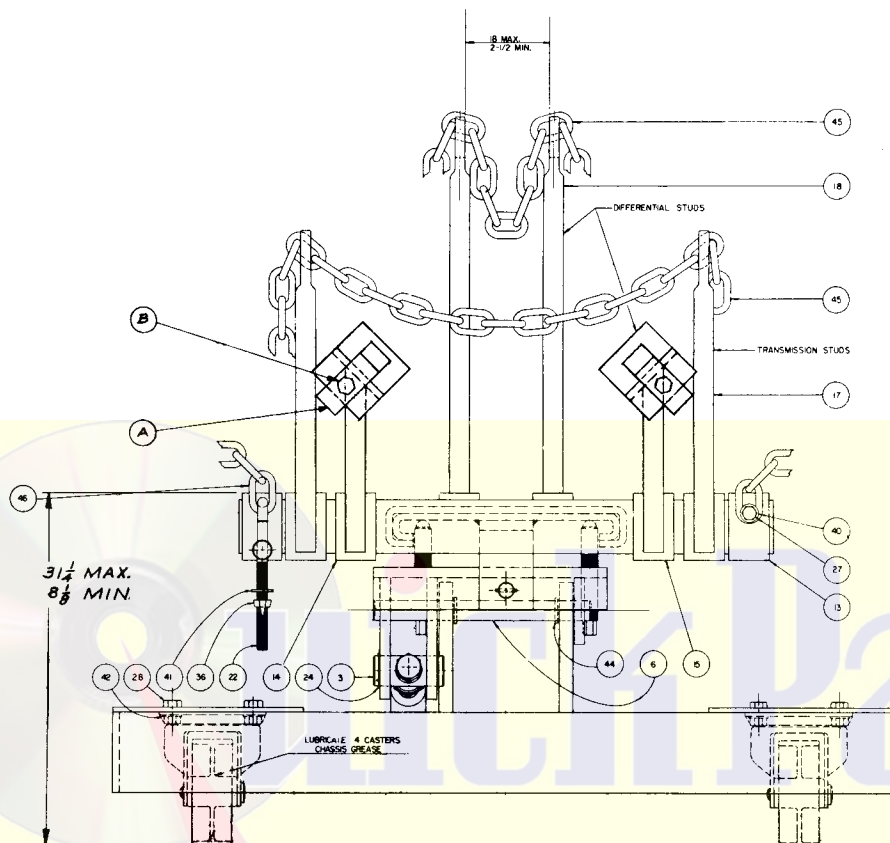
*Used for (1) truck and passenger car transmissions and truck differentials  
(2) the removal and replacement of both front and rear type engines (3) placing  
compact cars on jack stands. NO HOIST REQUIRED!*

1. Unpack jack and tighten all cap screws (it is possible these may loosen in shipping).
2. Check for hydraulic leaks and damage in shipment.
3. Remove solid closure screw from reservoir and install vented plug attached to this unit making sure oil level is even with fill hole. Use only LX-21 Jack Oil for filling. DO NOT USE BRAKE FLUID.
4. TO EXPEL AIR:  
Loosen screw opposite pump piston (See item 29 on Power Unit Diagram). Cover hole with finger.

Stroke pump handle upward. Remove finger and depress pump handle. Repeat until all air is expelled. Tighten screw.

5. Install proper adaptor for work to be done. This is accomplished by removing L shaped hinge pin and placing adaptor clevis over jack head and re-inserting hinge pin. See diagram reverse side of this page.

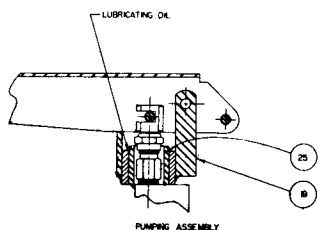
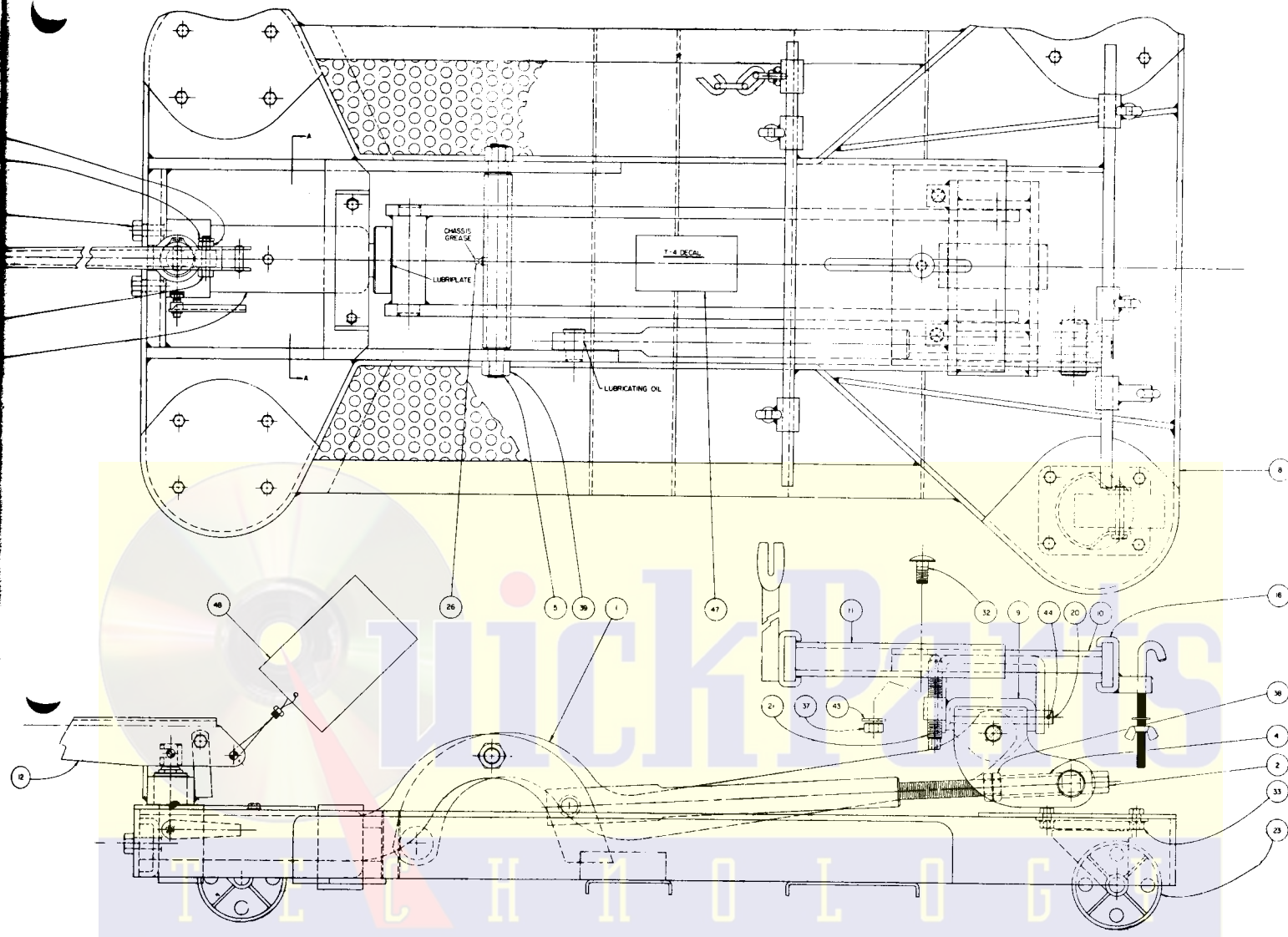
Note: Always install end of adaptor as marked "TOWARD PUMP HANDLE" or "TOWARD ENGINE" as the case may be. Adaptor not shown.



WHEN ORDERING PARTS INCLUDE BOTH MODEL AND SERIAL NUMBER AS WELL AS PART NAME AND NUMBER

Item No.	Part No.	Description	No. Req.
1	D44.103	Arm Assembly	1
2	D45.028	Parallel Screw	1
3	D46.055	Parallel Nut	1
4	D47.039	Sleeve	1
5	D48.061	Stud Pivot	1
6	D49.104	Shaft Tilt	1
7	D50.111	Support Bracket	1
8	D51.001	Frame Assembly	1
9	D52.111	Head Assembly	1
10	D53.111	Channel Assembly, Lower	1
11	D54.111	Channel Assembly, Upper	1
12	D55.135	Handle-Pump	1
13	D56.111	Chain Adapter	1
14	D57.111	Angle Assembly, R.H.	1
15	D58.111	Angle Assembly, L.H.	1
16	D59.111	Hook Adapter Assembly	1
17	D60.111	Stud Assembly, Short	4
18	D61.111	Stud Assembly, Long	2
19	D62.151	Swivel Bracket	1
20	D63.061	Hinge Pin	1
21	D64.028	Tilt Screw	2
22	D65.017	Chain Hook	1
23	D66.154	Bassick Caster	4
24	D241.044	RS-112 Spirolox Ring	2
25	D242.044	5100-150 Truarc Ring	1

Item No.	Part No.	Description	No. Req.
26	D243.096	Grease Fitting	1
27	D244.028	5/16-18x1/2 Hex Cap Screw	1
28	D245.028	3/8-16x3/8 Hex Cap Screw	16
29	D246.028	3/8-16x1 1/4 Hex Cap Screw	2
30	D247.028	3/8-24x1 1/2 Hex Cap Screw	1
31	D248.028	1/2-20x1 3/4 Hex Cap Screw	2
32	D249.028	1/2-13x1 Carriage Bolt	1
33	D250.055	3/8-16 Hex Nut Automotive	18
34	D232.055	3/8-24 Palnut	1
35	D231.055	3/8-24 Hex Nut Jam	1
36	D251.055	3/8-16 Wing Nut	1
37	D252.055	1/2-13 Hex Nut Automotive	1
38	D253.055	3/4-10 Hex Nut Jam	2
39	D254.055	3/4-16 Hex Nut Automotive	2
40	D255.108	5/16 SAE Washer	1
41	W40.108	3/8 SAE Washer	1
42	D256.108	3/8 Shake Proof Washer	16
43	D257.108	1/2 SAE Washer	1
44	D238.061	5/32 Dia. Roll Pins	4
45	D258.066	5-0x48 Straight Link Chain	2
46	D259.066	4-0x48 Straight Link Chain	1
47	T-4.26	Decal	1
48	117-R	Instruction Card	1
50	T4.05A-1	Power Unit Assembly	1



#### SPECIFICATIONS

Capacity.....	2000 Lbs.
Overall Length.....	46 1/2 In.
Overall Width: Front.....	29 1/2 In.
Back.....	25 In.
Low Lifting Height.....	8 1/2 In.
Max. Lifting Height.....	31 1/4 In.
Wheel Diameter.....	4 In.
Shipping Weight.....	250 Lbs.

#### TILT FEATURE

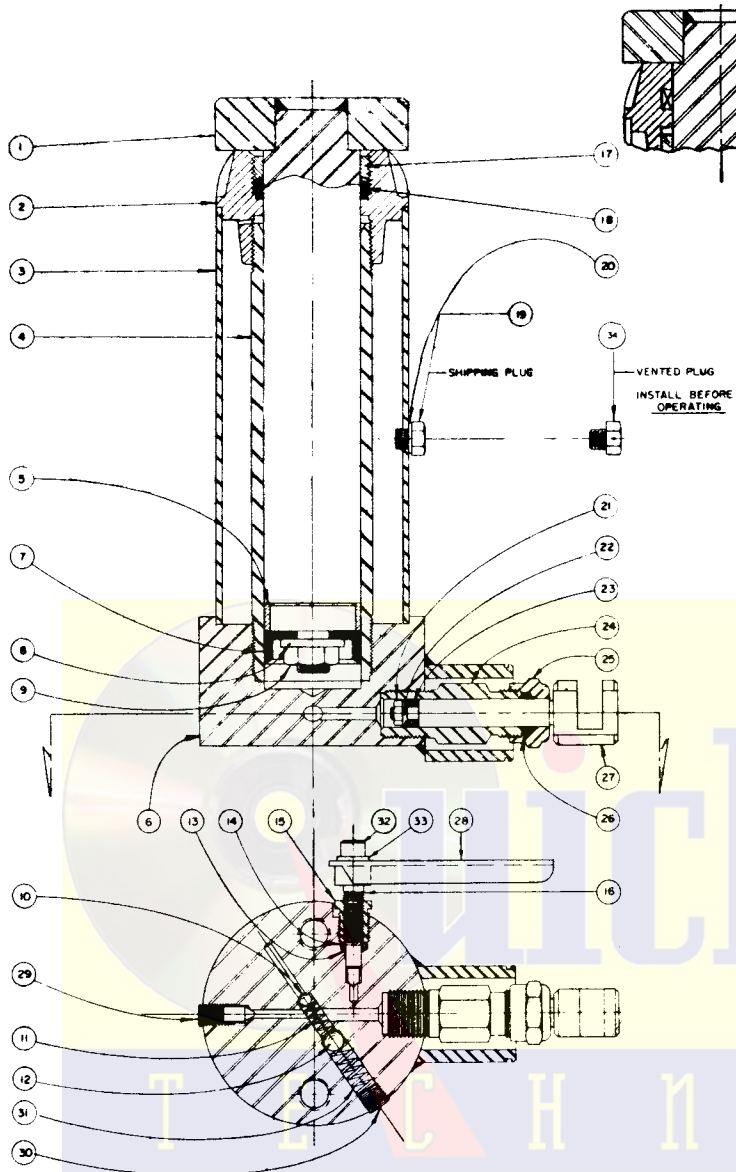
Front.....	45°
Back.....	12°
Side, L.H. ....	10°
Side, R.H. ....	10°



USE ONLY BLACKHAWK  
LX-21 JACK OIL AND  
GENUINE FACTORY PARTS.

# T4.05A-1 POWER UNIT FOR T-4-1 TRANSMISSION JACK

WHEN ORDERING PARTS INCLUDE BOTH MODEL AND  
SERIAL NUMBER AS WELL AS PART NAME AND NUMBER



Item No.	Part No.	Description	No. Req.
1	D68.040.....	Ram Assembly .....	1
2	AA85.20-2.....	Top Cap .....	1
3	AA85.25-2.....	Reservoir .....	1
4	CB9.30-2.....	Cylinder .....	1
5	AA85.29-2.....	Plunger Ring .....	1
6	D69.005.....	Base .....	1
** 7	M73.41-1.....	Plunger Cup .....	1
8	AA85.43.....	Plunger Cap Washer.....	1
9	AA85.120.....	Hex Nut .....	1
**10	1.16.....	7/32 Dia. Ball Intake Valve.....	1
11	D70.183.....	Spring-Intake Valve.....	1
**12	S1.16.....	5/16 Dia. Ball Exhaust Valve.....	1
**13	1.74.....	Packing Release .....	1
**14	CB9.335.....	Leather Washer .....	1
15	CB9.11-1.....	Packing Nut—Release Valve.....	1
*16	D71.010.....	Release Screw .....	1
17	AA85.21.....	Packing Nut—Plunger .....	1
**18	CA11.76.....	Packing—Plunger .....	2
19	C9.22-2.....	Plug Filler .....	2
**20	C9.37.....	Gasket—Filler Plug .....	1
**21	CB9.55.....	Retaining Nut—Pump Cup.....	1
**22	F11.52.....	Spreader—Pump Cup .....	1
**23	F11.53.....	Pump Cup .....	1
24	CB9.50-1.....	Cylinder—Pump .....	1
25	CB9.54-1.....	Nut—Pump Gland .....	1
**26	5.75S.....	Packing—Pump .....	1
**27	D72.040.....	Piston—Pump .....	1
*28	D73.135.....	Lever—Release .....	1
29	D74.028.....	Valve—Bleeder .....	1
30	D218.006.....	1/8 Soc. Pipe Plug.....	1
**31	D75.183.....	Spring—Exhaust Valve .....	1
*32	D219.028.....	10-32x3/8 Soc Cap Screw.....	1
*33	D220.108.....	No. 10 SAE Washer.....	1
*	T4.10A.....	Release Assembly .....	1
34	AJ100.406.....	Vent Plug .....	1

\*T4.10A Release Assembly, includes (\*) asterisk items.

\*\*For economy repair, use Jack/Saver Kit T4K. Items included in this Kit are marked with double asterisk\*\*.

NOTE: Complete T4.05A-1 Power Unit is available either as exchange or outright purchase.

## Guarantee

Blackhawk guarantees its Lifting Equipment and Porto-Power Repair Tools against defects in workmanship and material for 90 days from date of delivery to the user. Only exception is chain, which follows the trade custom of its manufacturers and cannot be guaranteed.

When question of warranty arises, the user should send his unit to the nearest Blackhawk Franchised Service Depot for inspection, transportation to be prepaid and evidence of delivery date furnished. Contact Blackhawk Mfg. Co., Milwaukee, Wis., for list of Franchised Service Depots.

If the difficulty comes under the terms of our guarantee, the Franchised Service Depot will repair or replace parts affected and return prepaid. Our guarantee does not cover ordinary wear and tear, abuse, misuse, overloading, altered products or use of improper fluid.

## Franchised Service Depots



For quality workmanship with genuine Blackhawk parts select a Franchised Blackhawk Service Depot for your repair work. Only repairs performed by a franchised service depot displaying this official franchise service depot sign are backed with full factory guarantee. The Classified Section in your Phone Book lists your nearest Franchised Service Depot.

**BLACKHAWK MFG. CO.**  
MILWAUKEE 46, WISCONSIN

