

Master Copy

BLACKHAWK®

instructions & repair parts

MODEL T-11-1 TRANSMISSION JACK Capacity 750 Lbs.

Supersedes Sheet S-274

OPERATING INSTRUCTIONS

1. Remove solid fill plug and replace with vented plug.
2. To raise Jack turn release valve in clockwise direction and operate pump handle.
3. To lower Jack turn release valve counter-clockwise.

TO REMOVE TRANSMISSION

- A. Place vehicle on jack stands to a convenient working height. Place transmission jack under vehicle with the pump lever toward the differential and the adaptor toward the engine.
- B. Adjust the adaptor corner brackets to fit the transmission and line adaptor by means of the side-to-side tilt screws and front-to-back tilt screws (see figures 15 and 30 on parts drawing). These tilting features may be also used while lowering in order that obstacles may be cleared and also for positioning when transmission is installed.
- C. Secure transmission to adaptor by means of the Safety Hold-Down Chain. Further instructions for Adaptor are shown on TK-320 Instruction and Parts Information.
- D. Use the Jack to raise both Engine and Transmission to permit removal of rear engine mount when necessary.
- E. Lower the engine and transmission to remove Bell Housing screws. Leave three screws, one at bottom and one at each side to hold transmission to engine.
- F. Use Jack to lift engine to a near normal position and install auxiliary engine support bar. Remove the remaining screws, lower the transmission and roll jack from under vehicle. The back end of jack may be lifted manually in order to clear large Bell Housing while removing complete unit from under the vehicle.

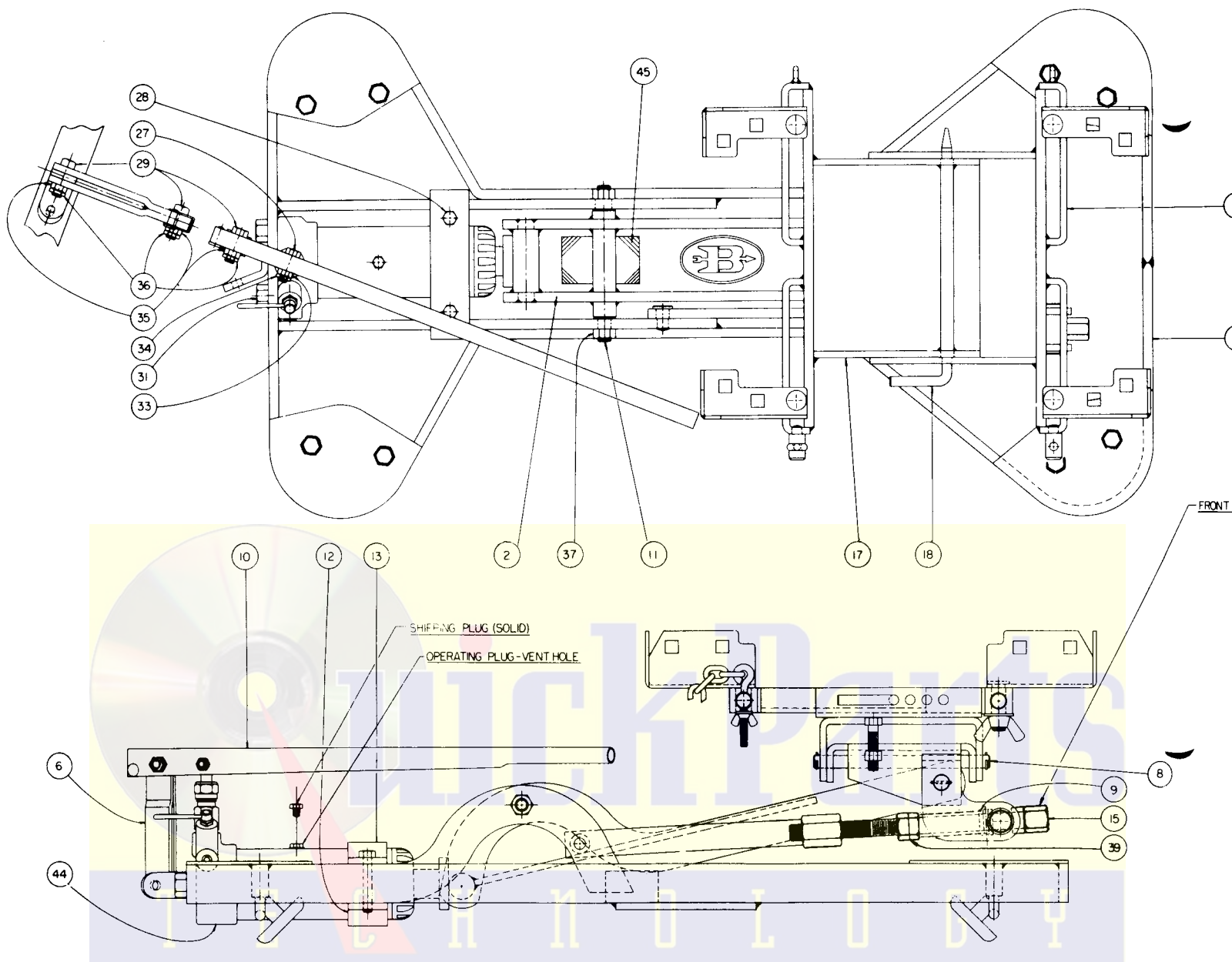
JACK SERVICE INSTRUCTIONS

1. Fill Reservoir to the level of filler hole only when the Jack arm is in **down** position with Jack on a level floor. **CAUTION:** Use only Blackhawk LX-21 Jack Oil — NEVER USE BRAKE FLUID.
2. To remove air pockets or vacuum, raise arm manually to the top

position and hold there with a screwdriver inserted through the frame. Open the release valve, pull ram forward manually to the outward position. Lower arm and ram assembly and repeat this operation two or three times if necessary.

LUBRICATION

1. Use lubri-plate or chassis grease to lubricate power unit pushing pad.
2. Use S.A.E. 20 Oil on all other friction parts every 30 days.

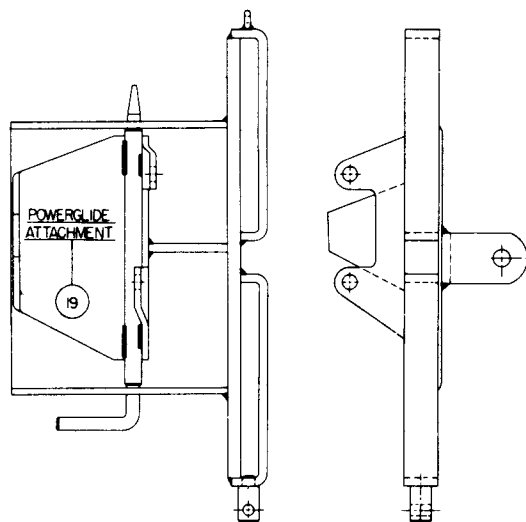


**WHEN ORDERING PARTS INCLUDE BOTH JACK MODEL AND
SERIAL NUMBER AS WELL AS PART NAME AND NUMBER**

Item No.	Part No.	No. Req.	Description
1	D277.001	1	Frame Weld Assembly
2	D278.103	1	Lift Arm Assembly
3	D279.111	1	Head Weld Assembly
6	D282.056	2	Link Clevis
7	D80.061	1	Pivot
8	D81.104	1	Shaft
9	D82.039	1	Sleeve
10	D83.135	1	Handle Assembly
11	D84.028	1	Stud
12	D85.111	1	Bottom Bracket
13	D86.111	1	Top Bracket
14	D90.104	1	Shaft
15	D91.028	1	Parallel Screw
16	D286.101	1	Bottom Channel Assembly
17	D103.101	1	Top Channel Assembly
18	D106.061	1	Locating Pin
19	D109.111	1	Power Glide Attachment
20	D110.028	1	Eye Bolt
21	D105.111	2	Corner Bracket L. H.
22	D104.111	2	Corner Bracket R. H.
23	D274.028	4	Screw
24	D111.066	1	Chain - Hold Down
27	D225.028	1	$\frac{1}{8}$ -24 x $1\frac{1}{4}$ Hex Cap Screw
28	D226.028	2	$\frac{1}{8}$ -18 x $2\frac{1}{4}$ Hex Cap Screw
29	D227.028	2	$\frac{3}{8}$ -24 x $1\frac{1}{4}$ Hex Cap Screw

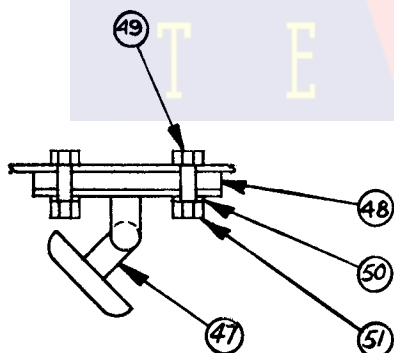
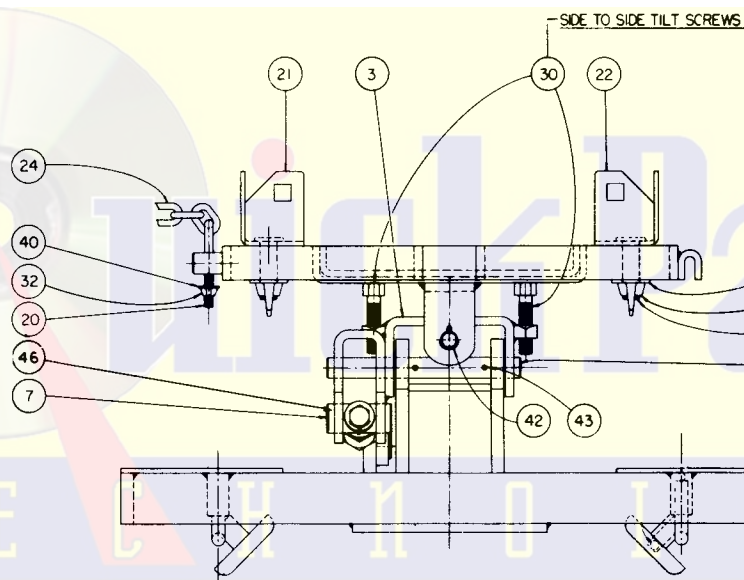
Item No.	Part No.	No. Req.	Description
30	D314.028	2	$\frac{3}{8}$ -16 x 2 Hex Cap Screw
31	D228.028	2	$\frac{1}{4}$ -20 x $\frac{3}{4}$ Hex Cap Screw
32	D262.055	1	$\frac{1}{4}$ -20 Wing Nut
33	D229.055	1	$\frac{1}{8}$ -24 Hex Nut
34	D230.055	1	$\frac{1}{8}$ -24 Hex Palnuts
35	D231.055	2	$\frac{3}{8}$ -24 Hex Nut
36	D232.055	2	$\frac{3}{8}$ -24 Hex Palnuts
37	D234.055	2	$\frac{1}{2}$ -20 Hex Nut
38	D263.055	4	$\frac{1}{2}$ -13 Wing Nut
39	D235.055	2	$\frac{3}{8}$ -11 Hex Jam Nut
40	D215.108	1	$\frac{1}{4}$ Washer Plain
41	D257.108	4	$\frac{1}{2}$ S.A.E. Washer
42	D288.061	2	$\frac{3}{8}$ x 1 Cotter Pins
43	D238.061	2	$\frac{3}{8}$ x 1 Roll Pin
44	T11.05A-1	1	Power Unit*
45	D315.026	1	Decal - Name Plate
46	D222.044	2	Retaining Ring
47	E332.154	4	Caster
48	E333.186	4	Spacer
49	D677.028	8	$\frac{1}{8}$ -18 x 1 Hex Cap Screw
50	S4.139-1	8	$\frac{1}{8}$ Shakeproof Lockwasher
51	D891.055	8	$\frac{1}{8}$ -18 Hex Nut

*See separate Power Unit parts list on back page.



USE ONLY BLACKHAWK
LX-21 JACK OIL AND
GENUINE FACTORY PARTS.

TO BACK TILT SCREW



TYPICAL SECTION
THRU A CASTER

SPECIFICATIONS

CAPACITY	750 LBS.
OVERALL LENGTH	36-1/2
OVERALL WIDTH	19-1/2
LOW LIFTING HEIGHT	6
MAX. LIFTING HEIGHT	25-1/2
FORWARD TILT	56°
BACK TILT	6°
SIDE TILT R. H.	10°
SIDE TILT L. H.	10°

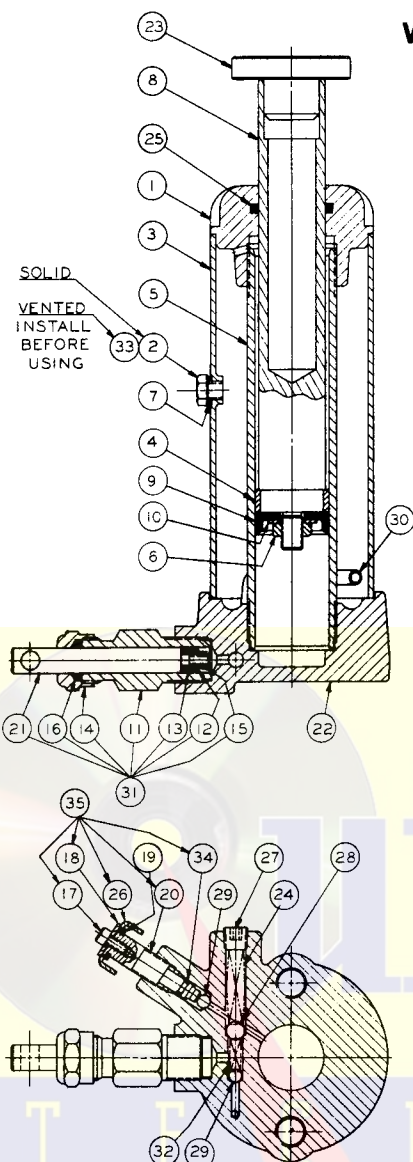
ADAPTER ADJUSTMENT

LENGTH MIN.	9-1/4
LENGTH MAX.	18-3/4
WIDTH MIN.	4-1/2
WIDTH MAX.	19-1/2

SHIPPING WEIGHT 90 LBS.

T11.05A-1 POWER UNIT FOR T-11-1 TRANSMISSION JACK

WHEN ORDERING PARTS INCLUDE BOTH JACK MODEL AND SERIAL NUMBER AS WELL AS PART NAME AND NUMBER



Item No.	Part No.	Description	No. Req.
1	BA85.20-5	Top Cap	1
2	C9.22-2	Filler Plug	1
3	BA85.25-2	Reservoir	1
4	BA85.29-3	Plunger Ring	1
5	BA85.30-3	Cylinder	1
6	MJ35	Hex Nut	1
* 7	C9.37	Filler Plug Gasket	1
8	BA85.40-4	Plunger	1
* 9	1.41-1	Plunger Cup	1
10	BA85.43	Washer	1
11	CB9.50-1	Pump Cylinder	1
*12	F11.52	Pump Cup Spreader	1
*13	F11.53	Pump Cup	1
14	CB9.54-1	Pump Gland Nut	1
*15	CB9.55	Retaining Nut	1
*16	5.75	Pump Packing	1
17	D945.028	Lockscrew	1
18	D944.108	Washer	1
19	D943.044	Retaining Ring	1
20	D991.010	Release Valve Spindle	1
21	CB9.51-1	Pump Plunger	1
22	D907.005	Base	1
23	D96.045	Saddle Plunger	1
*24	D98.183	Spring-Exhaust	1
*25	CJ100.104	Quad Ring	1
26	D942.135	Release Valve Handle	1
27	D99.006	Valve Plug	1
*28	S1.16	Ball-Exhaust (5/16 Dia.)	1
*29	1.16	Ball-Intake (7/32 Dia.)	2
30	D95.268	Intake Tube	1
31	CB9.50A-1	Pump Assembly	1
*32	D97.183	Spring-Intake	1
33	AJ100.406	Vent Plug	1
*34	AJ100.312	"O" Ring	1
35	D991.900	Release Valve Assembly	1

Use Jack/Saver Kit No. T1K-3 Containing Items Indicated by Asterisk (*).

NOTE: Complete T11.05A-1 Power Unit is available either as exchange or outright purchase.

FRANCHISED SERVICE DEPOTS



For quality workmanship with genuine Blackhawk parts select a Franchised Blackhawk Service Depot for your repair work. Only repairs performed by a Franchised Service Depot displaying this official sign are backed with full factory guarantee. The Classified Section in your Phone Book lists your nearest Franchised Service Depot.

GUARANTEE

Blackhawk guarantees its Products against defects in workmanship and materials for 90 days from date of delivery to the user. Only exception is chain, which follows the trade custom of its manufacturers and cannot be guaranteed. When question of warranty arises, the user should send his unit to the nearest Blackhawk Franchised Service Depot for inspection, transportation to be prepaid and evidence of purchased date furnished. If the difficulty comes under the terms of our guarantee, the Franchised Service Depot will repair or replace parts affected and return prepaid. Our guarantee does not cover ordinary wear and tear, abuse, misuse, overloading, altered products or use of improper fluid.

PARTS, SERVICE INFORMATION AND THE ADMINISTRATION OF FRANCHISED SERVICE DEPOTS FOR BLACKHAWK PRODUCTS IS PROVIDED BY —

BLACKHAWK SERVICE

MILWAUKEE, WISCONSIN 53246

DIVISION OF APPLIED POWER INDUSTRIES, INC.

Please direct all Service Correspondence to BLACKHAWK SERVICE