

Master Copy

# BLACKHAWK®

REPAIR PARTS SHEET

ONE-END AIR JACK

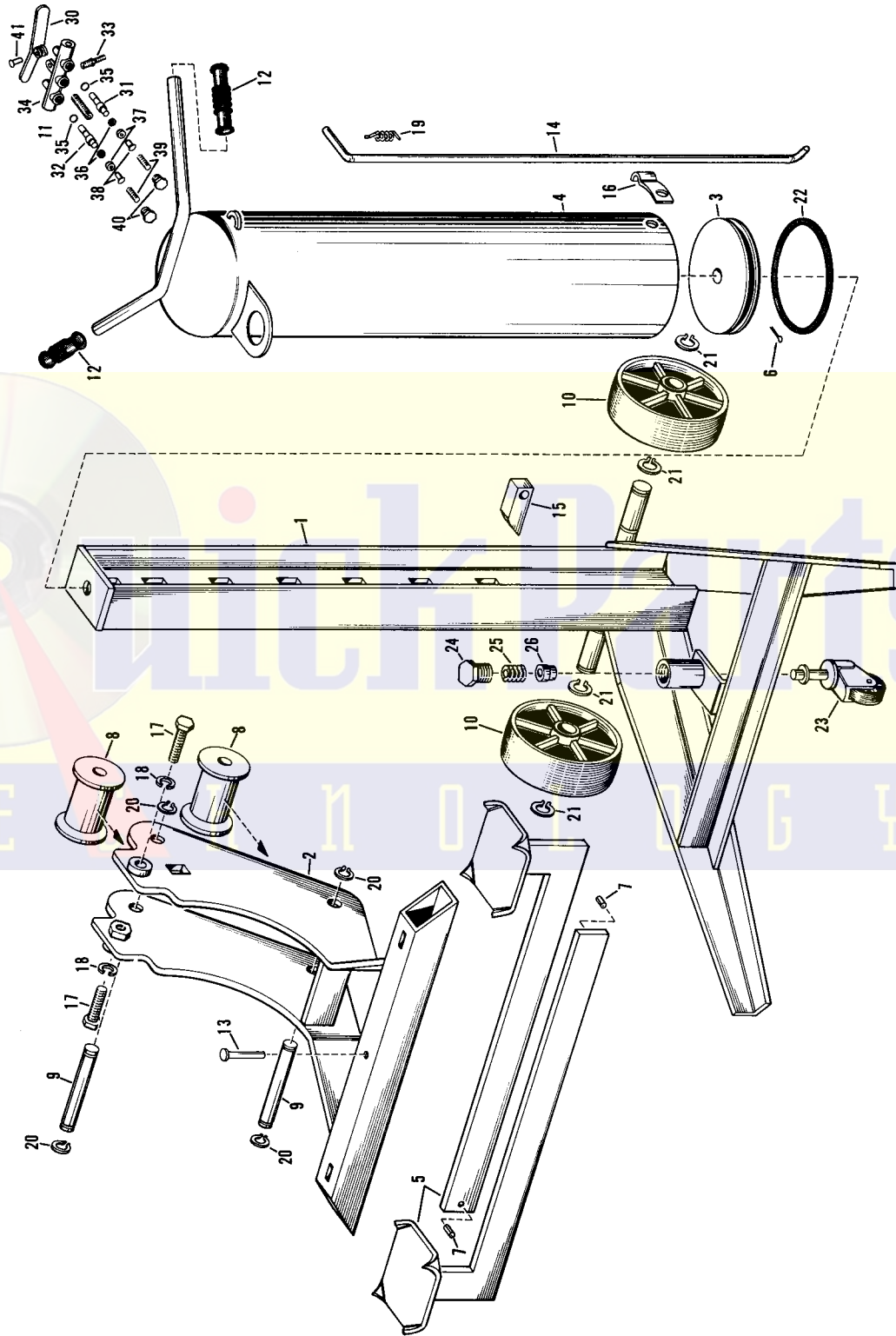
MODEL SJ-51

RATED CAPACITY

3000 LBS.

Sheet No. S-154

Issued Aug. 1958



REPAIR PARTS SHEET  
ONE-END AIR JACK SJ-51

Parts List on Reverse Side



# PARTS LIST FOR MODEL SJ-51

Item No.	Part No.	Description	Req.	Item No.	Part No.	Description	Req.
1	SJ51.900	Leg & Post Assy.	1	23	SJ100.085	Caster	1
2	SJ51.901	Side Plate Assy.	1	24	SJ100.052	Caster Cap	1
3	SJ51.902	Piston Assy.	1	25	SJ100.086	Caster Spring	1
4	SJ51.903	Tank Assy.	1	26	SJ100.053	Caster Plunger	1
5	SJ10.051	Slide Arm Assy.	2	27	A532.026	Decal - Large (not shown)	1
6	SJ51.15	Cotter Pin	1	28	A534.026	Decal - Small (not shown)	1
7	SJ100.076	Roll Pin	2	29	A533.026	Decal - Caution (not shown)	1
8	SJ51.27	Roller	2	30	V-420	Lever	1
9	SJ51.28	Roller Shaft	2	31	V-421	Exhaust Stem	1
10	SJ51.29	Wheel	2	32	V-422	Inlet Stem	1
11	V-432	Valve & Nipple	1	33	V-423	Air Chuck Inflator	1
12	SJ51.31	Grip	2	34	V-425	Valve Body	1
13	SJ100.049	Stop Pin	1	35	V-426	Stem "O" Ring	2
14	SJ51.33	Lock Handle	1	36	V-427	Seal	2
15	SJ51.34	Lock Block	1	37	V-428	Seal Cup	2
16	SJ51.35	Lock Handle Clamp	1	38	V-429	Cup Screw	2
17	SJ51.36	Bolt	2	39	V-430	Spring	2
18	SJ51.37	Lock Washer	2	40	V-431	Plug	2
19	SJ51.38	Lock Handle Spring	1	41	V-433	Lever Rivet	1
20	SJ51.39	Retainer Ring	4	42	V-434	Inlet Stem Assy. (not shown)	1
21	SJ51.40	Retainer Ring	4	43	V-435	Exhaust Stem Assy. (not shown)	1
22	SJ51.41	"O" Ring	1				

**NOTE:** Orders for parts cannot be filled unless both model and serial number with prefix, imprinted on nameplate of ram, are given.

## GUARANTEE

Blackhawk guarantees its Hand Jacks, Service Jacks and Porto-Power against defects in workmanship and material for 90 days from date of delivery to the user. Only exception is Porto-Power chain, which follows the trade custom of its manufacturers and cannot be guaranteed.

When question of warranty arises, the user should send his unit to the nearest Blackhawk Franchised Service Depot for inspection, or to the Blackhawk Service Division, 5054 W. State St., Milwaukee 8, Wis.; transportation to be prepaid and evidence of delivery date furnished.

If the difficulty comes under the terms of our guarantee, we will repair or replace parts affected and return prepaid. Our guarantee does not cover ordinary wear and tear, abuse, misuse, overloading, altered products or use of improper fluid.

## A Network of FRANCHISED SERVICE DEPOTS serves Blackhawk Users worldwide

For quality workmanship with genuine Blackhawk parts select a franchised Blackhawk Service depot for your repair work. Only repairs performed by a franchised service depot are backed with full factory guarantee. The Classified Section in your Phone Book lists your nearest Franchised Service Depot.

**BLACKHAWK MFG. CO. - - - MILWAUKEE 46, WIS.**