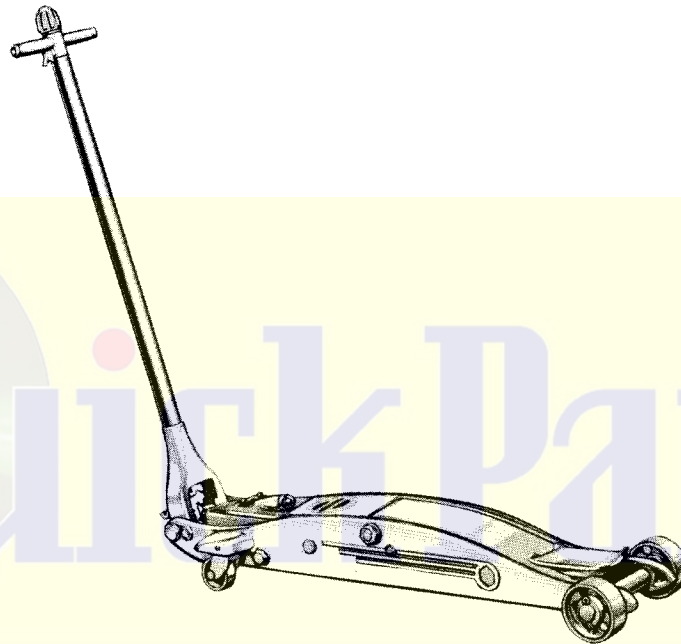


BLACKHAWK® LIFTING EQUIPMENT

Master Copy instructions & repair parts

**MODELS S-4-1 & S-4-3
SERVICE JACKS
Capacity 4 Ton**

Supersedes Sheet No. 1076



TECHNOLOGY

Guarantee

Blackhawk guarantees its Lifting Equipment against defects in workmanship and material for 90 days from date of delivery to the user. Only exception is chain, which follows the trade custom of its manufacturers and cannot be guaranteed.

When question of warranty arises, the user should send his unit to the nearest Blackhawk Franchised Service Depot for inspection, transportation to be prepaid and evidence of delivery date furnished. Contact Blackhawk Mfg. Co., Milwaukee, Wis., for list of Franchised Service Depots.

If the difficulty comes under the terms of our guarantee, the Franchised Service Depot will *repair or replace parts affected* and return prepaid. Our guarantee does not cover ordinary wear and tear, abuse, misuse, overloading, altered products or use of improper fluid.

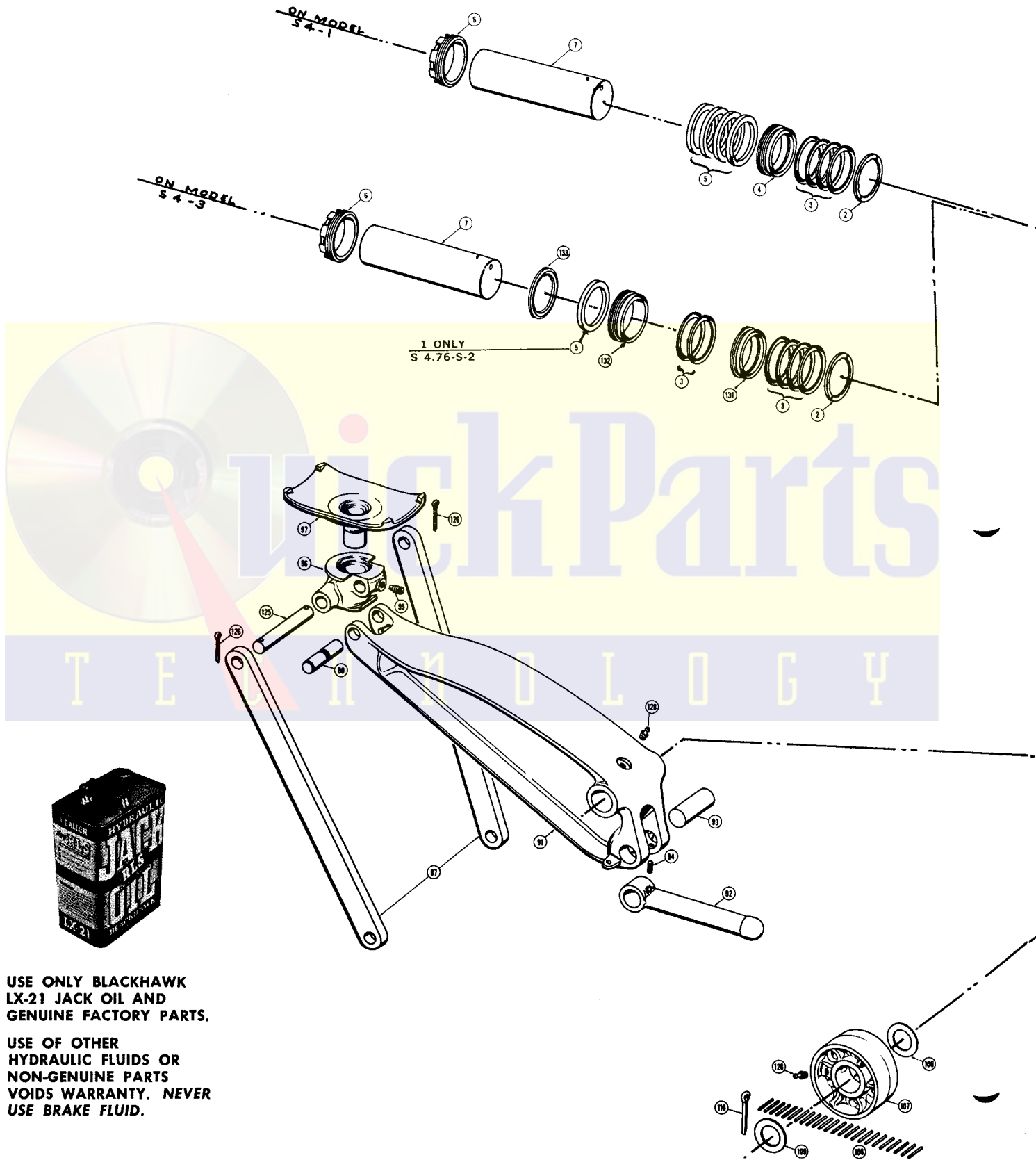
Franchised Service Depots



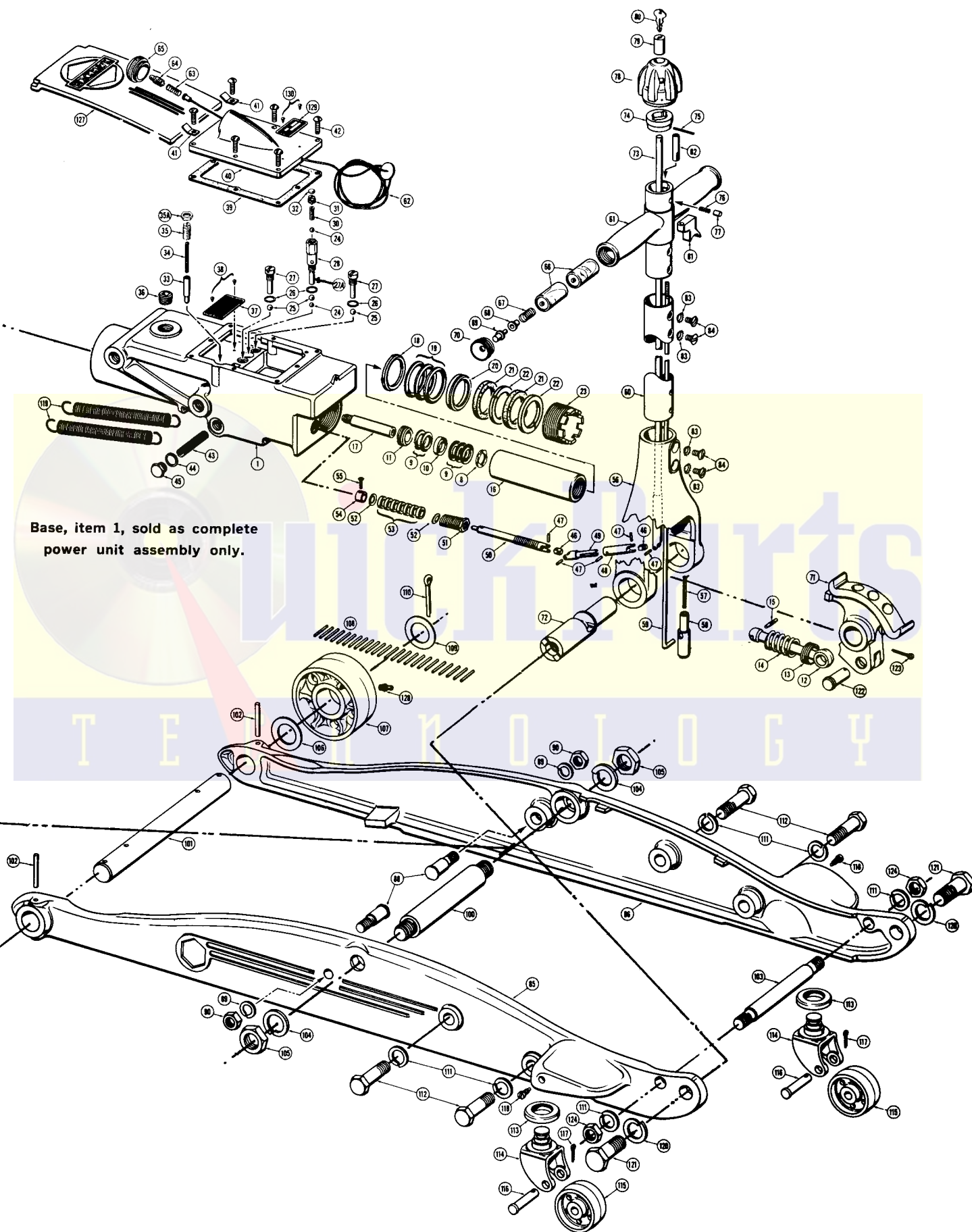
For quality workmanship with genuine Blackhawk parts select a Franchised Blackhawk Service Depot for your repair work. Only repairs performed by a franchised service depot displaying this official franchise service depot sign are backed with full factory guarantee. The Classified Section in your Phone Book lists your nearest Franchised Service Depot.

BLACKHAWK MFG. CO.
MILWAUKEE 46, WISCONSIN





Base, item 1, sold as complete
power unit assembly only.



REPAIR PARTS LIST FOR MODELS S-4-1 & S-4-3

WHEN ORDERING PARTS INCLUDE BOTH MODEL AND
SERIAL NUMBER AS WELL AS PART NAME AND NUMBER

Item No.	Part No.	Description	No. Req.
1	S4.05A	Power Unit Exchange	1
2	S4.43-2	Spreader	1
*3	S4.41-1	Plunger Cup	4
4	S4.44-2	Plunger Stop Ring	1
5	S4.76-S-2	Plunger Packing	4
6	S4.21-2	Plunger Gland Nut	1
7	S4.40-3	Plunger	1
8	S4.52-3	Inner Pump Cup Spreader	1
*9	A87.053	Inner Pump Cup	5
10	S4.192	Inner Pump Cup Spacer	1
11	S4.55-2	Inner Pump Cup Retaining Nut	1
12	S4.62	Pump Link	1
13	S4.171	Pump Plunger Spring Nut	1
14	S4.170	Pump Plunger Spring	1
15	S4.61	Pin	1
16	S4.51-3	Pump Plunger	1
17	S4.163-3	Pump Plunger Guide	1
18	S4.52A-1	Outer Pump Cup Spreader	1
*19	S4.53A	Outer Pump Cup	3
20	S4.187	Pump Packing Spacer	1
*21	S4.75	Pump Packing	2
*22	S4.75A	Pump Packing	2
23	S4.54	Plunger Gland Nut	1
†*24	1.16	7/32" Dia. Steel Ball	1
*25	S1.16	5/16" Dia. Steel Ball	3
*26	B159.167	Valve Plug Gasket	3
27	S4.186G	Valve Spacer	2
†27A	S4.186-1	Valve Spacer	1
†28	B163.190	Safety Valve Body	1
†*29	1.16	Safety Valve Ball 7/32"	1
†30	B162.206	Safety Valve Spring	1
†31	B956.028	Safety Valve Adjusting Screw	1
†32	B161.272	Safety Valve Sealing Plug	1
33	A298.165	Overflow Valve	1
34	S4.141	Pump Overflow Valve Spring	1
35	A297.232	Spring Adjusting Screw	1
35A	N12.143	Nut	1
36	S4.245	Pipe Plug	1
37	S15.319	Oil Level Plate	1
38	W78.03	Drive Screw	2
*39	S4.161S	Base Cover Gasket	1
40	S4.162-3	Base Cover	1
41	S4.299	Frame Cover Clip	2
42	S15.89	Cap Screw	6
*43	S4.18	Oil Strainer Screen	1
*44	S1.167	Oil Screen Plug Gasket	1
45	S4.150	Oil Strainer Screen Plug	1
46	1502D	Universal Joint Knuckle	2
47	1502E	Universal Joint Pin	5
48	S4.151	Universal Joint Terminal	1
49	S4.152	Universal Joint Link	1
50	S4.10	Release Valve Spindle	1
51	S4.11	Release Valve Packing Nut	1
52	S13.11B	Packing Nut Washer	2
*53	5.75	Release Valve Packing	7
54	S3.13	Release Valve Stop Ring	1
55	S3.252	Release Valve Stop Ring Screw	1
56	S4.133-1	Jack Handle Yoke	1
57	S4.141	Jack Handle Control Spring	2
58	S4.140	Jack Handle Control Plunger	1
59	S4.142	Jack Handle Control Rod	1
60	A372.135	Jack Handle	1
61	S4.145-2	Jack Handle Cross Bar	1
62	S13.390A	Jack Light Wire	1
63	S4.375	Terminal Contact Spring	1
64	S4.376	Jack Lamp	1
65	S4.354	Lens	1
66	S4.377	Jack Battery	2
67	S15.141	Light Switch Spring	1
68	S4.370	Light Switch Button Bushing	1
69	S4.369	Light Switch Button	1
70	S4.371	Light Switch Button Retainer	1
71	S4.134-2	Operating Segment	1
72	S4.127	Jack Handle Shaft	1
73	S4.149	Release Valve Control Rod	1
74	S15.320	Release Valve Rod Driver	1
75	S15.148	Release Valve Control Knob Pin	1
76	906G-1	Spring	1
77	S1.146	Release Valve Cont. Knob Plung	1
78	S15.147	Release Valve Knob	1
79	S15.324	Release Valve Lock Cylinder	1

Item No.	Part No.	Description	No. Req.
80	S15.325	Release Valve Lock Key	2
81	S14.144	Jack Handle Control Rod Trigger	1
82	S4.143	Jack Handle Control Rod Nut	1
83	S4.139-1	Lock Washer	4
84	S4.138-1	Lock Screw	4
85	S4.102-7	Left Hand Side Plate	1
86	S4.101-7	Right Hand Side Plate	1
87	S4.116-1	Parallel Link	2
88	S4.118	Parallel Link Screw	2
89	S1.119	Lock Washer	2
90	S1.120	Hexagon Jam Nut	2
91	S4.103-4	Lifting Arm	1
92	S4.202-1	Connecting Link	1
93	S4.169-2	Plunger Cross Pin	1
94	S1.159	Lock Screw	1
96	S8.111	Saddle Support Bracket	1
97	S3.45	Saddle	1
98	S8.112	Saddle Fulcrum Pin	1
99	S4.46	Saddle Lock Screw	1
100	S4.121-2	Fulcrum Pin	1
101	S4.104	Front Wheel Axle	1
102	S8.105	Axle Lock Pin	2
103	S4.124	Frame Tie Rod	1
104	S4.122	Lock Washer	2
105	S4.123	Hexagon Jam Nut	2
106	S4.108B	Front Wheel Washer	2
107	S8.106-1	Front Wheel	2
108	S4.107	Front Wheel Bearing Roller	48
109	S4.108-1	Front Wheel Bearing Washer	2
110	S4.109	Cotter Pin	2
111	S4.180	Lock Washer	6
112	S3.128	Base Bolt	4
113	S4.155A-1	Rear Wheel Caster Bearing	2
114	S13.154	Rear Wheel Caster	2
115	S8.174-1	Rear Wheel	2
116	S4.175	Rear Wheel Center Pin	2
117	K18.58	Cotter Pin	2
118	S13.173	Lock Screw	2
119	S4.184-1	Pull Spring	2
120	S1.131	Lock Washer	2
121	S4.128	Jack Handle Yoke Bolt	2
122	S4.64	Pump Link Pin	1
123	S1.117	Cotter Pin	1
124	S4.181	Hexagon Jam Nut	2
125	S4.114-1	Saddle Pivot Pin	1
126	S1.109	Cotter Pin	2
127	S4.98	Frame Cover	1
128	S4.188-2	Lubrication Fitting	3
129	B155.026	Name Plate	1
130	W78.03	Drive Screw	2
131	A488.043	Chevron Cup Spreader	1
132	S4.44-3	Plunger Stop Ring	1
133	S4.388	Washer	1

SUB-ASSEMBLIES

S4.190-2	Safety Valve (Includes Items 24, 27A, 28, 29, 30, 31 & 32)
S4.10A	Release Valve Spindle (Includes Items 46, 47, 49 & 50)
S4.149C	Release Valve Control (Includes Items 46, 47, 48 & 73)
S15.147A	Release Valve Knob (Includes Items 74, 75, 78, 79 & 80)
S15.147B	Release Valve Knob (Includes 78 & 79)
S13.154A	Rear Wheel Caster (Includes 114, 115, 116 & 117)
S4.135A-2	Jack Handle (Includes complete operating handle and yoke)
S4.05A	Power Assembly (Complete Power Assembly and Base)

POWER UNIT	S-4-1	S4.05A
	S-4-3	S4.05A-1

For Economy Repair, use S4K-3 Jack/Saver Kit. Items included in this Kit are marked with asterisk ().

†These parts (Items 27A, 28, 29, 30, 31 & 32) should be purchased as the assembled Safety Valve, S4.190-2, which is set at the factory to the correct working pressure.