

# BLACKHAWK®

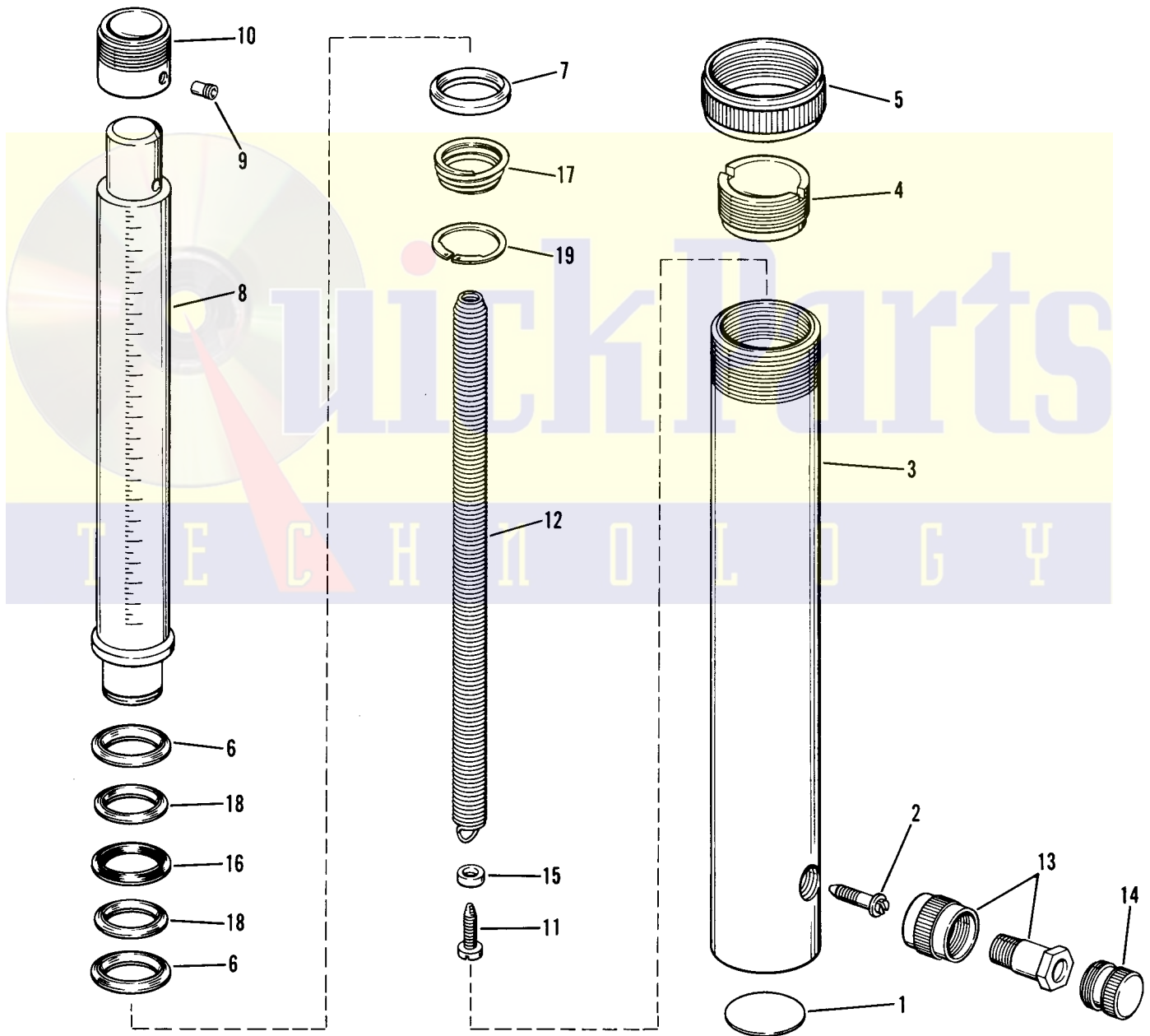
## repair parts

**MODELS RC-160 & RC-160-2  
RC-161 & RC-161-2**

**"LONG STROKE" PORTO-POWER RAM**

**RATED CAPACITY — 10 TON**

Issued September, 1965 — Supersedes Sheet PS-310



# PARTS LIST FOR MODELS RC-160, RC-160-2, RC-161, RC-161-2

Item No.	RC160—RC161 Part No.	RC160-2—RC161-2 Part No.	No. Req.	Description
1	B208.026	B208.026	1	Nameplate
2	R159.302-1	R159.302-1	1	Spring Retaining Screw
3	B11.005	B11.005	1	Base
4	R159.44	R159.44	1	Stop Ring
5	R28.271	R28.271	1	Thread Protector
*6	R159.41	R159.41	2	Cup (Leather)
7	R159.43-1	R159.43-1	1	Spreader
8	C194.900-1	C194.900-1	1	Plunger
*9	B14.300	B14.300	1	Set Screw
10	B105.045	B105.045	1	Saddle (Threaded) (RC-161 only)
11	B4.143	B633.302	1	Spring Retaining Screw
12	B12.184	B12.184	1	Spring (Return)
13	ZR400	ZR400	1	Ram Half Coupler
14	Z410-1	Z410-1	1	Dust Cap
15	B7.209	B7.209	1	Bushing
*16	B175.041	B175.041	1	Cup (Rubber)
*17	B9.184	B9.184	1	Spring (Coil)
*18	R159.316	R159.316	2	Separator
*19	B15.297	B15.297	1	Retaining Ring
†*20	R159.06-1		1	Plunger Plug
†21	W222.37		1	Plunger Plug Washer
†22	B1.045	B1.045	1	Saddle (Smooth) (RC-160 only)
†23	Z489	Z489	1	Coupler Repair Kit

†Part not shown.

\*For economy repair use Jack/Saver Kit R160K.  
Items included in kit marked with an asterisk (\*).

**NOTE:** Orders for parts cannot be filled unless both model and serial number with prefix imprinted on nameplate are given.

## FRANCHISED SERVICE DEPOTS



For quality workmanship and genuine Blackhawk parts select a Franchised Blackhawk Service Depot for your repair work. Only repairs performed by a Franchised Service Depot displaying this official sign are backed with full factory guarantee. The Classified Section in your Phone Book lists your nearest Franchised Service Depot.

## GUARANTEE

Blackhawk guarantees its Products against defects in workmanship and materials for 90 days from date of delivery to the user. Only exception is chain, which follows the trade custom of its manufacturers and cannot be guaranteed. When question of warranty arises, the user should send his unit to the nearest Blackhawk Franchised Service Depot for inspection, transportation to be prepaid and evidence of purchased date furnished. If the difficulty comes under the terms of our guarantee, the Franchised Service Depot will repair or replace parts affected and return prepaid. Our guarantee does not cover ordinary wear and tear, abuse, misuse, overloading, altered products or use of improper fluid.

PARTS, SERVICE INFORMATION AND THE ADMINISTRATION OF FRANCHISED SERVICE DEPOTS FOR BLACKHAWK PRODUCTS IS PROVIDED BY —

## BLACKHAWK SERVICE

MILWAUKEE, WISCONSIN 53246

DIVISION OF APPLIED POWER INDUSTRIES, INC.

Please direct all Service Correspondence to BLACKHAWK SERVICE