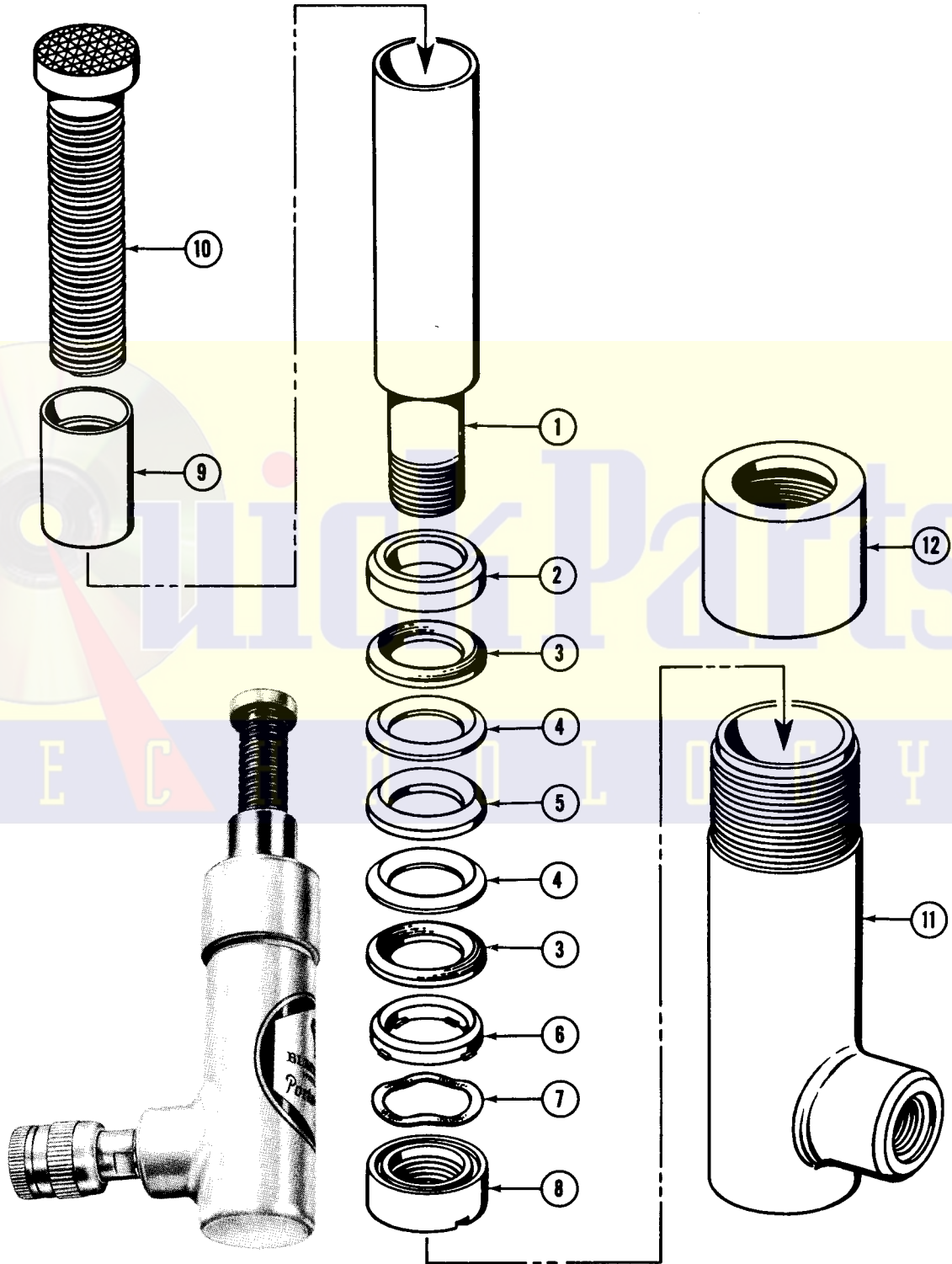


Master Copy

BLACKHAWK®

REPAIR PARTS SHEET
PORTO-POWER RAM
MODEL R-618
RATED CAPACITY
2-TON
Sheet No. 1087
Issued March, 1959



REPAIR PARTS SHEET FOR R-618 HYDRAULIC BANTAM PORTO-POWER RAM



Parts List on Reverse Side

PARTS LIST FOR MODEL R-618

Item No.	Part No.	Part Name	No. Req.
1	R618.40	Plunger	1
2	R325.71	Disc	1
3	R325.41	"V" Cup	2
4	R325.316	Cup Separator	2
5	B178.041	"V" Cup	1
6	R325.43	Spreader	1
7	R325.280	Spring Washer	1
8	R325.35	Retaining Nut	1
9	B207.232	Plunger Sleeve	1
9&10	R618.901	Plunger Adjusting Screw	1
11	R618.900	Base	1
12	R618.20	Top Cap	1

NOTE: Orders for parts cannot be filled unless both model and serial number with prefix, imprinted on nameplate of ram, are given.

GUARANTEE

Blackhawk guarantees its Hand Jacks, Service Jacks and Porto-Power against defects in workmanship and material for 90 days from date of delivery to the user. Only exception is Porto-Power chain, which follows the trade custom of its manufacturers and cannot be guaranteed.

When question of warranty arises, the user should send his unit to the nearest Blackhawk Franchised Service Depot for inspection, or to the Blackhawk Service Division, 5054 W. State St., Milwaukee 8, Wis.; transportation to be prepaid and evidence of delivery date furnished.

If the difficulty comes under the terms of our guarantee, we will repair or replace parts affected and return prepaid. Our guarantee does not cover ordinary wear and tear, abuse, misuse, overloading, altered products or use of improper fluid.

A Network of FRANCHISED SERVICE DEPOTS serves Blackhawk Users worldwide

For quality workmanship with genuine Blackhawk parts select a franchised Blackhawk Service depot for your repair work. Only repairs performed by a franchised service depot are backed with full factory guarantee. The Classified Section in your Phone Book lists your nearest Franchised Service Depot.

BLACKHAWK MFG. CO. - - - MILWAUKEE 46, WIS.